

michael miller FABRICS

ROMANTIC PATHWAYS QUILT

SIZE: 70"Wx 83"H • LEVEL: ADVANCED BEGINNER • PATTERN BY: WENDY SHEPPARD
FABRIC COLLECTION: MON AMI • FREE PATTERN AVAILABLE ON: MICHAELMILLERFABRICS.COM



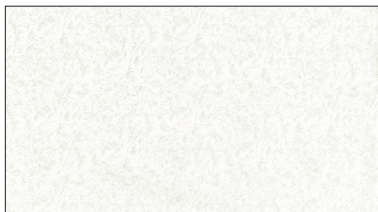
THIS IS A DIGITAL REPRESENTATION OF THE QUILT TOP, FABRIC MAY VARY.

PLEASE NOTE: BEFORE BEGINNING YOUR PROJECT, CHECK FOR ANY PATTERN UPDATES AT MICHAELMILLERFABRICS.COM'S FREE PROJECTS SECTION.

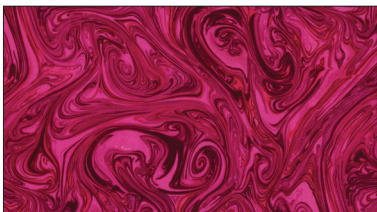
p.212.704.0774 | info@michaelmillerfabrics.com | www.michaelmillerfabrics.com



ROMANTIC PATHWAYS QUILT



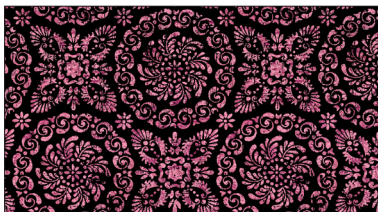
FABRIC A
CM0376-GLIMMER
FAIRY FROST
3-1/8 YARDS



FABRIC B
CX1087-MAGENTA
MARBLE
1/2 YARD



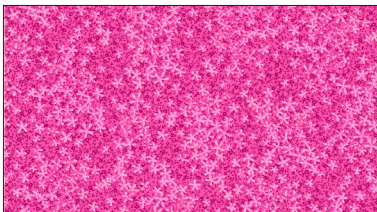
FABRIC C
CX8960-CREAM
FLORAL MEDALLION
7/8 YARD



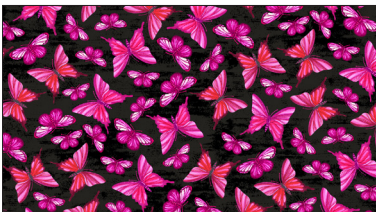
FABRIC D
CX8960-PINK
FLORAL MEDALLION
1/3 YARD



FABRIC E
CX8961-CREAM
MAKE A WISH
1/2 YARD



FABRIC F
CX8961-PINK
MAKE A WISH
1 YARD
(INCLUDES BINDING)



FABRIC G
CX8962-BLACK
WHISPER
3/8 YARD



FABRIC H
CX8962-PINK
WHISPER
3/8 YARD



FABRIC I
DCX8952-CREAM
MON AMI
3/4 YARD



FABRIC J
DCX8954-CREAM
SENTIMENTAL
3/8 YARD



FABRIC K
DCX8954-GRAY
SENTIMENTAL
3/8 YARD



FABRIC L
DCX8955-BLACK
ROMANCE
5/8 YARD



FABRIC M
DCX8957-CREAM
NOTE BOOK
5/8 YARD



(BACKING)
YOUR CHOICE
5-1/4 YARDS



ROMANTIC PATHWAYS QUILT

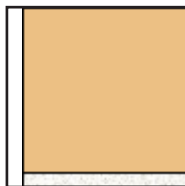
| KEY | |
|----------|---|
| A | <p>a. Block A (37) 1" x wof. Subcut (22) 1" x 6 1/2", (22) 1" x 7", (22) 1" x 8 1/2", (22) 1" x 9", (22) 1" x 10 1/2" and (22) 1" x 11" rectangles.</p> <p>b. Block B (1) 11" x wof. Subcut (8) 1" x 11", (8) 1" x 10 1/2", (8) 1" x 9" and (8) 1" x 8 1/2" rectangles.</p> <p>c. sashing rectangles (1) 12 1/2" x wof. Subcut (24) 1 1/2" x 12 1/2" rectangles.</p> <p>d. sashing strips (9) 1 1/2" x wof. Piece strips and subcut (5) 1 1/2" x 64 1/2" strips.</p> <p>e. outer border (8) 3 1/2" x wof. Piece strips and subcut (2) 3 1/2" x 70 1/2" and (2) 3 1/2" x 77 1/2" strips.</p> |
| B | <p>a. Block A and Block B (1) 12 1/2" x wof. Subcut for: Block A -- (3) 2" x 9" and (3) 2" x 10 1/2" rectangles. Block B -- (4) 2" x 11" and (4) 2" x 12 1/2" rectangles.</p> |
| C | <p>a. Block A (9) 2" x wof. Subcut (6) 2" x 7", (6) 2" x 8", (5) 2" x 9", (5) 2" x 10 1/2", (4) 2" x 11" and (4) 2" x 12 1/2" rectangles. (1) 6 1/2" x wof. Subcut (3) 6 1/2" x 6 1/2" squares.</p> |
| D | <p>a. Block B (3) 2" x wof. Subcut (4) 2" x 9" and (4) 2" x 10 1/2" rectangles.</p> |
| E | <p>a. Block A (7) 2" x wof. Subcut (6) 2" x 11", (6) 2" x 12 1/2", (5) 2" x 7" and (5) 2" x 8 1/2" rectangles.</p> |
| F | <p>a. Block A & Block B (5) 2" x wof. Subcut (4) 2" x 11", (4) 2" x 12 1/2", (4) 2" x 9" and (4) 2" x 10 1/2" rectangles.</p> <p>b. binding (9) 2 1/4" x wof. Piece strips, press wrong sides together along long sides to make a continuous binding strip.</p> |
| G | <p>a. Block A (4) 2" x wof. Subcut (4) 2" x 7", (4) 2" x 8 1/2", (3) 2" x 11" and (3) 2" x 12 1/2" rectangles.</p> |
| H | <p>a. Block A (2) 2" x wof. Subcut (4) 2" x 7" and (4) 2" x 8 1/2" rectangles. (1) 6 1/2" x wof. Subcut (5) 6 1/2" x 6 1/2" squares.</p> |

ROMANTIC PATHWAYS QUILT

| | |
|----------|---|
| I | <p>a. Block A (4) 2" x wof. Subcut (5) 2" x 11" and (5) 2" x 12 1/2" rectangles. (1) 6 1/2" x wof. Subcut (6) 6 1/2" x 6 1/2" squares.</p> <p>b. Block B (3) 2" x wof. Subcut (4) 2" x 11" and (4) 2" x 12 1/2" rectangles.</p> |
| J | <p>a. Block A (1) 10 1/2" x wof. Subcut (8) 2" x 10 1/2" and (8) 2" x 9 1/2" rectangles.</p> |
| K | <p>a. Block A (2) 2" x wof. Subcut (3) 2" x 7" and (3) 2" x 8 1/2" rectangles. (1) 6 1/2" x wof. Subcut (4) 6 1/2" x 6 1/2" squares.</p> |
| L | <p>a. Block A (4) 2" x wof. Subcut (6) 2" x 9" and (6) 2" x 10 1/2" rectangles.</p> <p>b. Block B (1) 8 1/2" x wof. Subcut (4) 8 1/2" x 8 1/2" squares.</p> |
| M | <p>a. Block A (1) 6 1/2" x wof. Subcut (4) 6 1/2" x 6 1/2" squares.</p> <p>b. Block B (1) 8 1/2" x wof. Subcut (4) 8 1/2" x 8 1/2" squares.</p> |

Constructing Block A

1. Sew (1) 1" x 6 1/2" **Fabric A** rectangle to the left of (1) 6 1/2" x 6 1/2" **Fabric 1** square, followed by (1) 1" x 7" **Fabric A** rectangle to the bottom of the square.



Unit measures 7" x 7" raw edge to raw edge.

2. Add to the previously sewn unit following pieces in listed order:

Left - (1) 2" x 7" **Fabric 2** rectangle

Bottom - (1) 2" x 8 1/2" **Fabric 2** rectangle

Left - (1) 1" x 8 1/2" **Fabric A** rectangle

Bottom - (1) 1" x 9" **Fabric A** rectangle



Unit measures 9" x 9" raw edge to raw edge.

ROMANTIC PATHWAYS QUILT

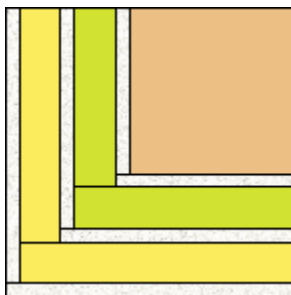
3. Add to the previously sewn unit following pieces in listed order:

Left - (1) 2" x 9" **Fabric 3** rectangle

Bottom - (1) 2" x 10 1/2" **Fabric 3** rectangle

Left - (1) 1" x 10 1/2" **Fabric A** rectangle

Bottom - (1) 1" x 11" **Fabric A** rectangle

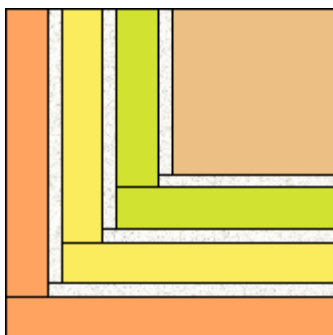


Unit measures 11" x 11" raw edge to raw edge.


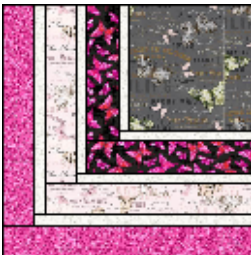



4. Add to the previously sewn unit following pieces in listed order:

Left - (1) 2" x 11" **Fabric 4** rectangle

Bottom - (1) 2" x 12 1/2" **Fabric 4** rectangle to complete (1) block, measuring 12 1/2" x 12 1/2" raw edge to raw edge.



5. Make a total number of blocks in the following **Fabric 1/Fabric 2/Fabric 3/Fabric 4** combinations:

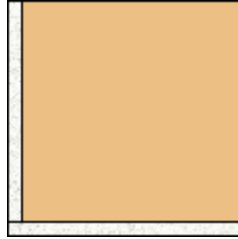
| 3 blocks | 4 blocks | 4 blocks | 5 blocks | 6 blocks |
|--|---|---|--|---|
|  |  |  |  |  |
| C/K/B/G | K/G/J/F | M/H/J/C | H/E/C/I | I/C/L/E |



ROMANTIC PATHWAYS QUILT

Constructing Block B

1. Sew (1) 1" x 8 1/2" **Fabric A** rectangle to the left of (1) 8 1/2" x 8 1/2" **Fabric 1** square, followed by (1) 1" x 9" **Fabric A** rectangle to the bottom of the square.



Unit measures 9" x 9" raw edge to raw edge.

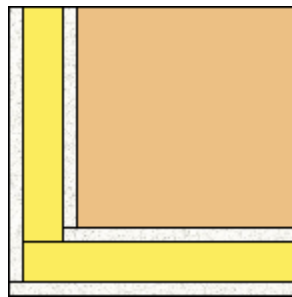
2. Add to the previously sewn unit following pieces in listed order:

Left - (1) 2" x 9" **Fabric 2** rectangle

Bottom - (1) 2" x 10 1/2" **Fabric 3** rectangle

Left - (1) 1" x 10 1/2" **Fabric A** rectangle

Bottom - (1) 1" x 11" **Fabric A** rectangle

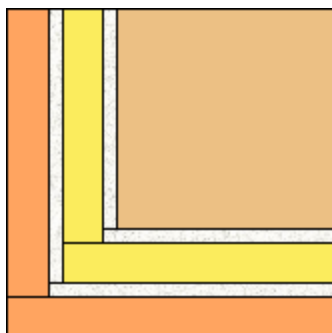


Unit measures 11" x 11" raw edge to raw edge.

3. Add to previously sewn unit following pieces in listed order:



Left - (1) 2" x 11" **Fabric 3** rectangle

Bottom: (1) 2" x 12 1/2" **Fabric 3** rectangle to complete (1) block, measuring 12 1/2" x 12 1/2" raw edge to raw edge.



4. Make a total number of blocks for the following **Fabric 1/Fabric 2/Fabric 3** combinations:

ROMANTIC PATHWAYS QUILT

| 4 blocks | 4 blocks |
|--|---|
|  <p>M/F/B</p> |  <p>L/D/I</p> |

Quilt Center Assembly

1. Pieced rows. Noting block orientations, arrange and sew together (5) pieced blocks and (4) 1 ½" x 12 ½" sashing rectangles to make a pieced row. Make a total of (6) pieced rows. Row 1 is shown below.



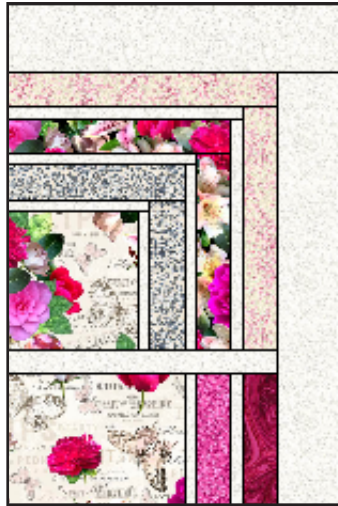
2. Sew together pieced rows and (5) 1 ½" x 64 ½" **Fabric A** sashing strips to complete quilt center.





ROMANTIC PATHWAYS QUILT

3. Outer border. Sew (2) 3 1/2" x 77 1/2" **Fabric A** strips to the opposite long sides of quilt center, followed by (2) 3 1/2" x 70 1/2" **Fabric A** strips to the remaining opposite short sides of quilt center to complete quilt top.



Finishing

1. With the backing fabric laying taut, place batting and then quilt top to form quilt sandwich. Baste sandwich.
2. Quilt as desired.
3. Bind to finish quilt.