

michael miller FABRICS

MAKE A WISH QUILT

SIZE 50"W X 70"H | LEVEL INTERMEDIATE | PATTERN BY WENDY SHEPPARD



*THIS IS A DIGITAL REPRESENTATION OF THE QUILT TOP. FABRIC MAY VARY.

FREE PATTERN AVAILABLE ON MICHAELMILLERFABRICS.COM

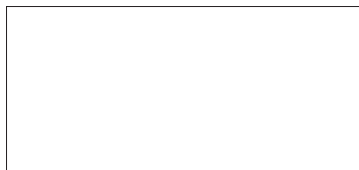
THIS IS A DIGITAL REPRESENTATION OF THE QUILT TOP, FABRIC MAY VARY.

PLEASE NOTE: BEFORE BEGINNING YOUR PROJECT, CHECK FOR ANY PATTERN UPDATES AT MICHAELMILLERFABRICS.COM'S FREE PROJECTS SECTION.

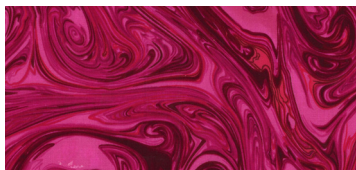
p.212.704.0774 | info@michaelmillerfabrics.com | www.michaelmillerfabrics.com



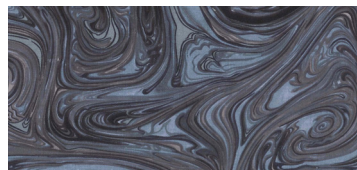
MAKE A WISH QUILT



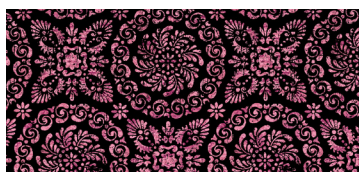
FABRIC A
SC5333-BRIGHT WHITE
COTTON COUTURE
1-1/2 YARDS



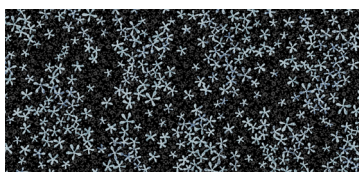
FABRIC B
CX1087-MAGENTA
MARBLE
1/2 YARD



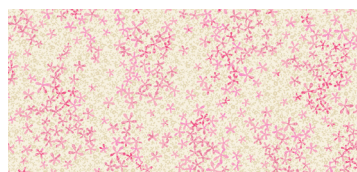
FABRIC C
CX1087-STONE
MARBLE
1 YARD
*INCLUDES BINDING



FABRIC D
CX8960-PINK
FLORAL MEDALLION
1/4 YARD



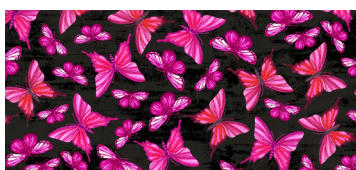
FABRIC E
CX8961-BLACK
MAKE A WISH
1/4 YARD



FABRIC F
CX8961-CREAM
MAKE A WISH
3/8 YARD



FABRIC G
CX8961-PINK
MAKE A WISH
1/8 YARD



FABRIC H
CX8962-BLACK
WHISPER
1/4 YARD



FABRIC I
CX8962-PINK
WHISPER
1/4 YARD



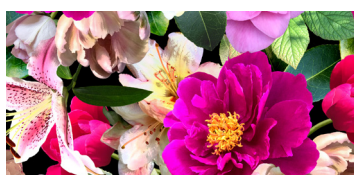
FABRIC J
DCX8953-BLACK
MON AMI PANEL
1 REPEAT (2/3 YARD)



FABRIC K
DCX8954-CREAM
SENTIMENTAL
3/8 YARD



FABRIC L
DCX8954-GRAY
SENTIMENTAL
1/4 YARD



FABRIC M
DCX8955-BLACK
ROMANCE
7/8 YARD



(BACKING)
YOUR CHOICE
4-3/8 YARDS



MAKE A WISH QUILT

KEY	CUTTING INSTRUCTIONS
A	<p>a. inner border #2 (4) 1" x wof. Subcut (2) 1" x 24 1/2" strips. Use remainder to piece with remaining wof strips and subcut (2) 1" x 43 1/2" strips.</p> <p>b. inner border #3 (5) 4 1/2" x wof. Subcut (38) 4 1/2" x 4 1/2" squares.</p> <p>c. inner border #4 (5) 2" x wof. Subcut (2) 2" x 35 1/2" strips. Piece remaining (3) strips and subcut (2) 2" x 52 1/2" strips.</p> <p>d. inner border #8 (6) 1 1/2" x wof. Piece strips and subcut (2) 1 1/2" x 43 1/2" and (2) 1 1/2" x 61 1/2" strips.</p>
B	<p>a. inner border #1 (4) 1" x wof. Subcut (2) 1" x 23 1/2" strips from (2) strips. If necessary, piece remaining fabric with remaining (2) strips and subcut (2) 1" x 42 1/2" strips.</p> <p>b. inner border #3 (10) "B" Dresden pieces from provided template.</p> <p>c. inner border #5 (5) 1" x wof. Subcut (2) 1" x 36 1/2" strips from (2) strips. Piece remaining (3) strips and subcut (2) 1" x 55 1/2" strips.</p>
C	<p>a. inner border #7 (6) 1 1/2" x wof. Subcut (2) 1 1/2" x 41 1/2" strips from (2) strips. Piece remaining (4) strips and subcut (2) 1 1/2" x 59 1/2" strips.</p> <p>For Binding: (7) 2 1/4" X WOF Strips; Sew short end to short end.</p>
D	<p>a. inner border #3 (20) "B" Dresden pieces from provided template.</p>
E	<p>a. inner border #3 (16) "D" Dresden pieces from provided template.</p>
F	<p>a. inner border #6 (5) 2" x wof. Subcut (2) 2" x 39 1/2" strips from (2) strips. Piece remaining (3) strips and subcut (2) 2" x 56 1/2" strips.</p>
G	<p>a. inner border #3 (10) "B" Dresden pieces from provided template.</p>
H	<p>a. inner border #3 (16) "B" Dresden pieces from provided template.</p>



MAKE A WISH QUILT

KEY	CUTTING INSTRUCTIONS
I	a. inner border #3 (20) "D" Dresden pieces from provided templates.
J	a. quilt center (1) 22 1/2" x 42 1/2" rectangle, centering design.
K	a. inner border #3 (36) "C" Dresden pieces from provided template.
L	a. inner border #3 (16) "B" Dresden pieces from provided template.
M	a. outer border (6) 4" x wof. Piece strips and subcut (2) 4" x 50 1/2" and (2) 4" x 63 1/2" strips.

MAKE A WISH QUILT

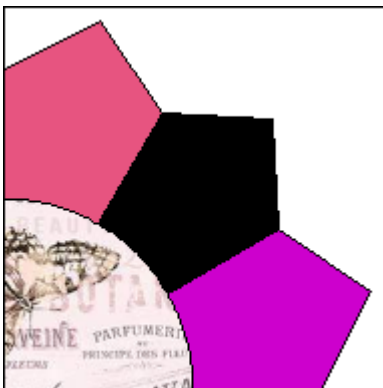
QUILT TOP ASSEMBLY

1. Inner border #1. Sew (2) 1" x 42 1/2" B strips to the opposite long sides of (1) 22 1/2" x 42 1/2" J quilt center, followed by (2) 1" x 23 1/2" B strips to the remaining opposite short sides of quilt center.

2. Inner border #2. Sew (2) 1" x 43 1/2" A strips to the opposite long sides of quilt center, followed by (2) 1" x 24 1/2" A strips to the remaining opposite short sides of quilt center.

3. Inner border #3.

a. Sew together (1) Fabric 1 template "B" piece and (1) Fabric 3 template "B" piece to each side of (1) Fabric 2 template "D" piece to make an arch unit. Curve piece the inner curve of the unit to (1) Fabric K template "C" piece. Turn under seam allowance of the Dresden blades of arch unit, and applique unit to (1) 4 1/2" x 4 1/2" A square to complete (1) Dresden quarter block. Trim making sure to leave a 1/4" seam allowance all round the square. Block measures 4 1/2" x 4 1/2" raw edge to raw edge.



b. Make a total number of blocks for the following Fabric 1/Fabric 2/Fabric 3 combinations:

10 blocks: B/I/D, G/I/D

16 blocks: L/E/H

c. Arrange and sew together (10) Dresden quarter blocks and (1) 4 1/2" x 4 1/2" A square to make a pieced column. Make (2) columns and sew to the opposite long sides of quilt center.

MAKE A WISH QUILT



Arrange and sew together (8) Dresden quarter blocks to make a pieced row. Make (2) rows and sew to the remaining opposite short sides of quilt center.



MAKE A WISH QUILT

4. Inner border #4. Sew (2) 2" x 52 1/2" A strips to the opposite long sides of quilt center, followed by (2) 2" x 35 1/2" A strips to the remaining opposite short sides of quilt center.
5. Inner border #5. Sew (2) 1" x 55 1/2" B strips to the opposite long sides of quilt center, followed by (2) 1" x 36 1/2" B strips to the remaining opposite short sides of quilt center.
6. Inner border #6. Sew (2) 2" x 56 1/2" F strips to the opposite long sides of quilt center, followed by (2) 2" x 39 1/2" F strips to the remaining opposite short sides of quilt center.
7. Inner border #7. Sew (2) 1 1/2" x 59 1/2" C strips to the opposite long sides of quilt center, followed by (2) 1 1/2" x 41 1/2" C strips to the remaining opposite short sides of quilt center.
8. Inner border #8. Sew (2) 1 1/2" x 61 1/2" A strips to the opposite long sides of quilt center, followed by (2) 1 1/2" x 43 1/2" A strips to the remaining opposite short sides of quilt center.
9. Outer border. Sew (2) 4" x 63 1/2" M strips to the opposite long sides of quilt center, followed by (2) 4" x 50 1/2" M strips to the remaining opposite short sides of quilt center to complete quilt top.





MAKE A WISH QUILT

FINISHING:

1. With the backing fabric laying taut, place batting and then quilt top to form quilt sandwich. Baste sandwich.
2. Quilt as desired.
3. Bind to finish quilt.

3 Blade Large Center Dresden Fan

Key Block (87/100 actual size)

