

michael miller FABRICS

# STARDUST GARDENS *Quilt*

Size: Approx 40" W x 54"H | Design by: Marinda Stewart | Level: CONFIDENT BEGINNER

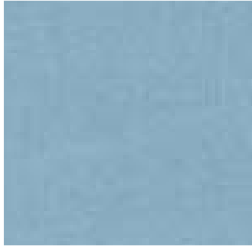


Free Pattern available on [michaelmillerfabrics.com](http://michaelmillerfabrics.com)

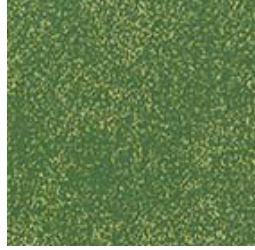




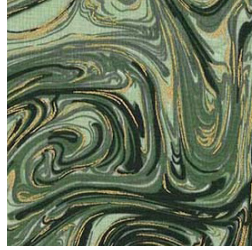
# FABRIC REQUIREMENTS



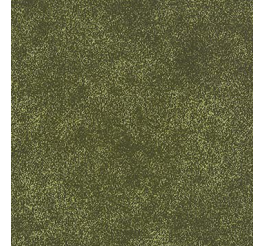
SC5333 Bottle  
5/8 yard



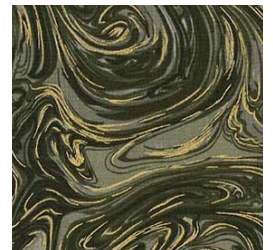
HM8820 Basil  
5/8 yard



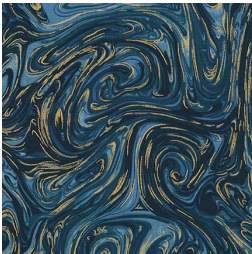
CM1087 Basil  
1/8 yard



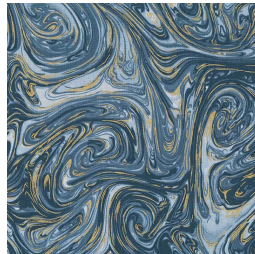
HM8820 Camo  
1/8 yard



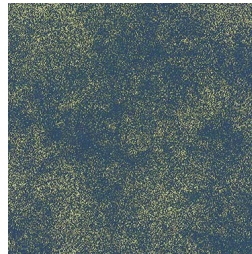
CM1087 Camo  
3/8 yard



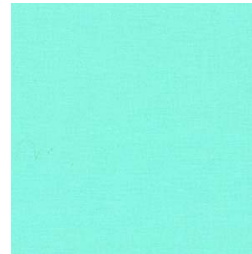
CM1087 Saturn  
3/8 yard



CM1087 Dusk  
1/8 yard



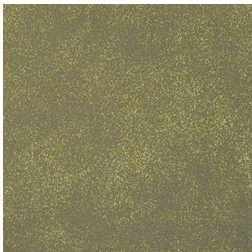
HM8820 Denim  
1/8 yard



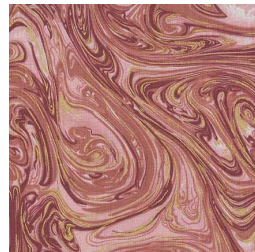
SC5333 Seafoam  
1/8 yard



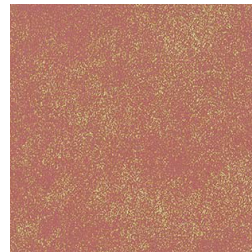
CM1087 Dirt  
1/4 yard



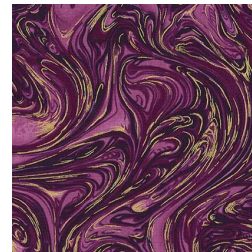
HM8820 Dirt  
5/8 yard



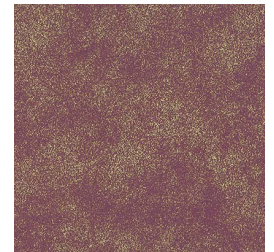
CM1087 Cameo  
3/8 yard



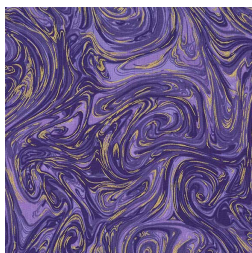
HM8820 Antique  
1/4 yard



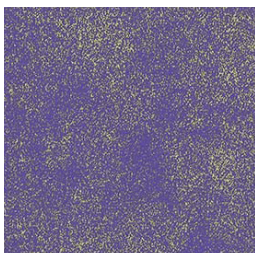
CM1087 Aubergine  
1/4 yard



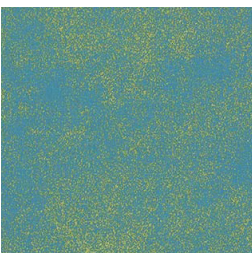
HM8820 Aubergine  
1/4 yard



CM1087 Grape  
1/8 yard



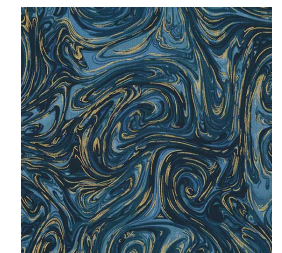
HM8820 Grape  
1/8 yard



HM8820 Saturn  
1/8 yard



HM8820 Teal  
1/8 yard



CM1087 Saturn  
Backing 1 5/8 yards

Stardust Garden  
Size: 40" W x 54" H Approximate  
Skill Level: Confident Beginner

**Note:** Both sides of HM8820 "Stardust" are used in this quilt. One side has a gold metallic finish and the other side is a solid color.

Fabrics	Yardage	Cutting
SC5333 Bottle Cotton Couture	5/8 yard	(1) 21 1/2" W x 22 1/2" H
HM8820 Basil Stardust	5/8 yard	(1) 21 1/2" H x 15 1/2" W (1) 1 1/2" x W.O.F. (1) 1/2" x W.O.F.
CM1087 Basil Marble	1/8 yard	(1) 1 1/2" x W.O.F.
HM8820 Camouflage Stardust	1/8 yard	(1) 1 1/2" x W.O.F.
CM1087 Camouflage Marble	3/8 yard	(1) 1 1/2" x W.O.F. (1) 1/2" x W.O.F. (1) 10 1/2" x 24 1/2" (1) 10 1/2" x 5 1/2"
CM1087 Saturn Marble	3/8 yard	(1) 10 1/2" x 5 1/2" (1) 10 1/2" x 15 1/2" (1) 10 1/2" x 20"
CM1087 Dusk Marble	1/8 yard	(1) 2 1/2" x W.O.F. *
HM8820 Denim Stardust	1/8 yard	(1) 1 1/2" x W.O.F. *
SC5333 Sea Cotton Couture	1/8 yard	(2) 3 1/2" x W.O.F. *
CM1087 Dirt Marble	1/4 yard	(2) 1 1/2" x 7 1/2" (2) 1 1/2" x 10 1/2" (2) 1 1/2" x 22 1/2"
HM8820 Dirt Stardust	5/8 yard	(2) 1 1/2" x 21 1/2" (2) 1 1/2" x 39 1/2" (5) 2 1/2" x W.O.F. - binding

		(3) 1" x 3 1/2" (23) Star Center *
CM1087 Cameo Marble	3/8 yard	(5) 3 1/2" x 5 1/2" (2) 3 1/2" x 4 1/2" (3) large flowers ** (5) bud centers *
HM8820 Antique Stardust	1/4 yard	(7) 2 1/2" x 5 1/2" (2) 2 1/2" x 4 1/2"
CM1087 Aubergine Marble	1/4 yard	(7) 1 1/2" x 5 1/2" (1) 1 1/2" x 4 1/2" (5) flower buds **
HM8820 Aubergine Stardust	1/4 yard	(2) 2 1/2" x 12 1/2" (1) 2" x 12 1/2"  (7) 2 1/2" x 5 1/2" (3) 2 1/2" x 4 1/2"
CM1087 Grape Marble	1/8 yard	(7) 1 1/2" x 5 1/2" (1) 1 1/2" x 4 1/2" (7) small flowers **
HM8820 Grape Stardust	1/8 yard	(16) small flowers (2) 1 1/2" x 22"
HM8820 Saturn Stardust	1/8 yard	(2) 2" x 22"
HM8820 Teal Stardust	1/8 yard	(2) 2" x 22"
Optional Backing: CM1087 Saturn Marble	2 2/3 yards	Backing
<p><b>Also Needed:</b> 45" x 60" batting, scissors, straight pins, threads to match (recommended: metallic gold, black, dark yellow rayon decorative threads in addition to sewing threads), rotary cutter, acrylic ruler, mat, fusible web, Optional but recommended: water soluble or iron-on tear-away stabilizer.</p> <p>* See Directions for piecing and sub cutting directions (step #10) ** See patterns</p>		

1. Sew one SC5333 Bottle 21 1/2" x 22 1/2" piece right sides together with one HM8820 Basil 21 1/2" x 15 1/2" piece with the solid green side to the front to make (1) 21 1/2" x 37 1/2" piece.

2. Sew one HM8820 Dirt 1 1/2" x 21 1/2" piece, with the metallic to the front, to the top and bottom of the panel. Sew one HM8820 Dirt 1 1/2" x 39 1/2" piece, metallic to the front, to each side of the center panel. Set aside.

3. To make the leaves - sew with the right sides together, (1) CM1087 Basil 1 1/2" x W.O.F. with (1) HM8820 Basil 1 1/2" x W.O.F. with metallic to the right side. Repeat using CM1087 Camouflage and HM8820 Camouflage. Following manufacturer's directions, iron fusible web to the wrong side of each strip. Using the large leaf patterns trace (8) large leaves centered on the seam. Trace (9) small leaves in the unused areas of CM1087 and (10) small leaves in the unused areas of HM8820. Cut out. Repeat for the remaining strip. Trace (11) large leaves, (10) HM8820 small leaves and (9) CM1087 small leaves cut out. Set aside. NOTE: Leaves may all be drawn free hand if desired.

4. For the stems - iron fusible web on the wrong side of CM1087 Camouflage 1/2" x W.O.F. piece and the solid side of HM8820 Camouflage 1/2" x W.O.F. piece. Cut the following - from HM8820 (1) each 10", 13 1/2", 8 1/2", 10 1/2". From CM1087 (1) each 9 1/2", 23", 5", 5 1/2". Set aside.

5. Flowers: Trace (3) large flowers and (5) bud centers onto the paper side of the fusible web. Rough cut out. Iron onto the wrong side of CM1087 Cameo. Cut out. Trace the (5) bud flowers onto the fusible web. Rough cut out. Iron onto the wrong side of CM1087 Aubergine. Cut out. Trace 23 small flowers on the fusible web. Iron (7) to the wrong side of CM1087 Grape, iron (9) to the solid side of HM8820 Grape and (7) to the metallic side of HM8820 Grape. Cut out. Trace (23) star centers on the fusible web. Iron onto the solid side of HM8820 Dirt. Cut out.

6. To arrange the applique pieces on the background panel- remove the paper backing from the applique pieces. Arrange the flower stems on the background as shown or as desired. Start with the primary stems, curve the stems as they are fused. Add the secondary stems trimming the stem at an angle to meet the primary stem. Fuse in place. Add the large CM1087 Camouflage flowers to the top of the stems. Add the CM1087 Aubergine flower buds. Fuse in place. Place the CM1087 Cameo bud centers on top of the larger buds. Add the large pieced leaves to the stems. Fuse in place. Fill in the rest of the area with the assorted small flowers from CM1087 Grape and HM8820 Grape. Add the small stars centers from HM8820 Dirt to the middle of each flower. Fuse in place. Add in randomly with the small leaves to fill in the design. Fuse in place.

7. Stitch the applique pieces in place by the desired method. The method used in this quilt was straight stitch, raw edge applique. Using black thread and free motion stitching, "draw" 3-4 rows of stitching along the raw edges of the stems, all leaves and the small flowers to create a 'painterly' 'hand-drawn' effect. For the center of all of the flowers and buds, metallic gold thread was used in a free form starburst pattern radiating from the center or base of each flower. Additionally, dark yellow rayon decorative thread was stitched on top of the metallic gold in the

small grape flowers for more impact. Optional (but recommended) stabilize the wrong side of the panel with water soluble or iron-on tear-away stabilizer before beginning stitching. This helps to eliminate distortion and shrinkage caused by the applique process. Remove the stabilizer following manufacturers directions once stitching is completed.

8. For the left side border - piece together randomly CM1087 - 1 1/2" x 22" Dirt and HM8820 Grape pieces with HM8820 2" x 22" Teal and Saturn pieces using (1) metallic side and (1) solid side of each to make (1) 10 1/2" x 22" pieced section. Cut out (1) 4 1/2" x 10 1/2" piece on a 45 degree angle and (1) 4 1/2" x 9 1/2" piece on a 45 degree angle. If needed, piece the 4 1/2" x 10 1/2" piece from the leftover pieces. Sew together (1) CM1087 Cameo 5 1/2" x 3 1/2", (1) HM8820 Aubergine 5 1/2" x 2 1/2" metallic side out, (1) CM1087 Aubergine 5 1/2" x 1 1/2", (1) HM8820 Antique 5 1/2" x 2 1/2" metallic side out, (1) HM8820 Antique 5 1/2" x 2 1/2" solid side out to make (1) 5 1/2" x 10 1/2" panel. Sew one CM1087 Dirt 1 1/2" x 10 1/2" piece to the top and bottom of the panel. Begin at the top with (1) CM1087 Saturn 5 1/2" x 10 1/2" piece add the 4 1/2" x 10 1/2" diagonal striped panel, (1) CM1087 Saturn 15 1/2" x 10 1/2" piece, (1) 7 1/2" x 10 1/2" pieced striped panel and (1) CM1087 Saturn 20" x 10 1/2" piece. Sew to the left side of the quilt to within 1/4" of the bottom edge. There will be extra fabric left. This will be used in the mitered corner.

9. For the bottom border - piece (1) HM8820 Aubergine 2 1/2" x 4 1/2" piece with the metallic side out, (1) CM1087 Aubergine 1 1/2" x 4 1/2", (1) HM8820 Antique 2 1/2" x 4 1/2" metallic side out, (1) CM1087 Cameo 3 1/2" x 4 1/2" and (1) HM8820 Aubergine 2 1/2" x 4 1/2" solid side out to make one 4 1/2" x 10 1/2" panel. Sew one CM1087 Camouflage 5 1/2" x 10 1/2" piece to the right side of the pieced panel. Sew unit to the right side of the CM1087 Camouflage 10 1/2" x 24 1/2" piece. Align the pieced unit with the right side of the panel. Sew to within 1/4" of the left side corner. Using a method of choice, miter the corner with CM1087 Saturn as shown.

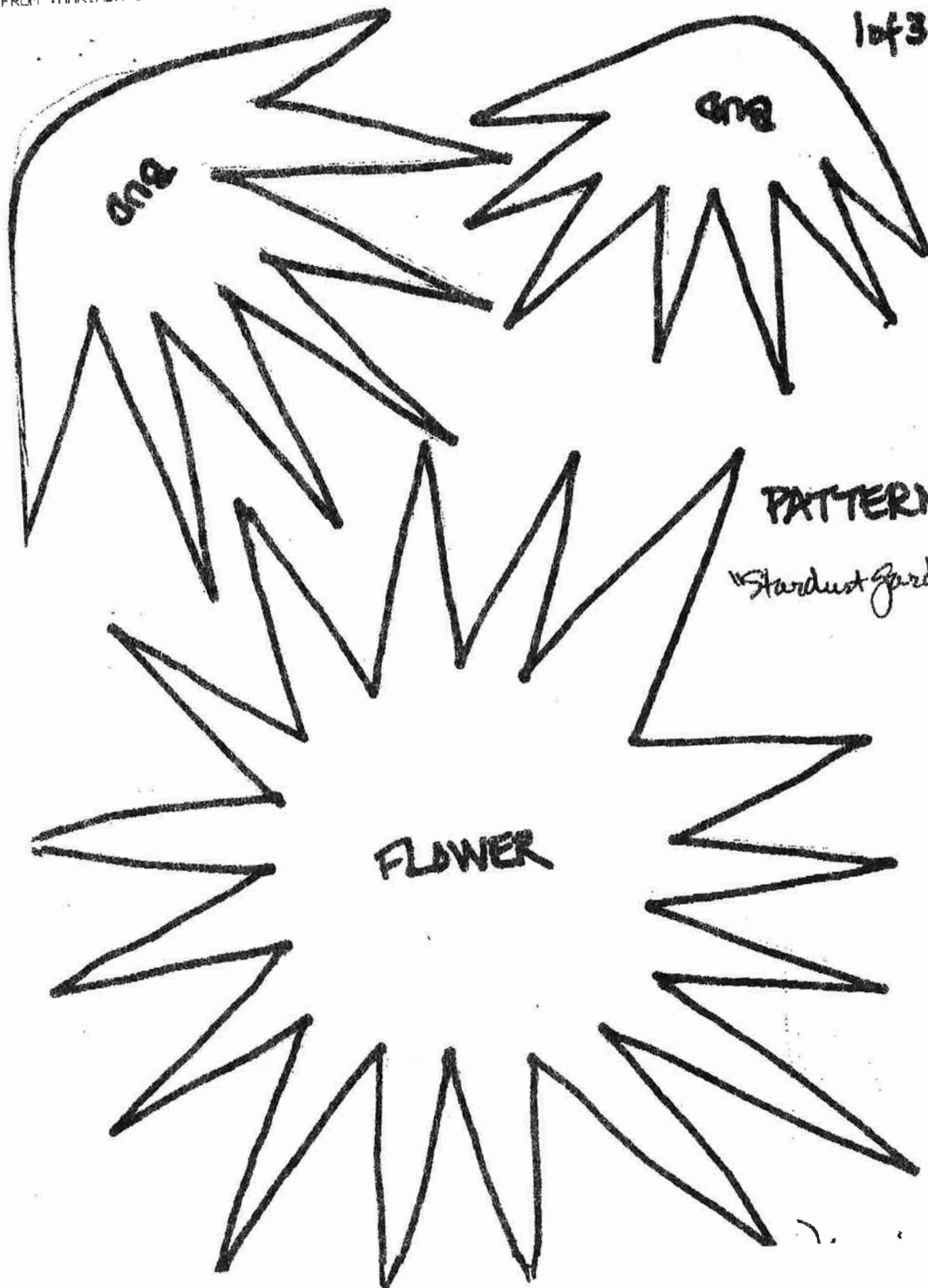
10. For the right side border, sew together in the following order left to right (1) CM1087 Dusk 2 1/2" x W.O.F., (1) SC5333 Sea 3 1/2" x W.O.F., (1) HM8820 Denim 1 1/2" x W.O.F. solid side out, (1) HM8820 Denim 1 1/2" x W.O.F. metallic side out to make (1) 7 1/2" x W.O.F. strip. Subcut the pieced strip into the following lengths 7 1/2" x 11 1/2", 7 1/2" x 16 1/2", and 7 1/2" x 12 1/2". Set aside. For the pieced panel - sew together (1) HM8820 Antique 2 1/2" x 4 1/2" solid side out, (1) HM8820 Aubergine 2 1/2" x 4 1/2" metallic side out, (1) CM1087 Cameo 3 1/2" x 4 1/2" to make (1) 4 1/2" x 7 1/2" piece. Sew (1) CM1087 Dirt 1 1/2" x 7 1/2" piece to the top and bottom of the pieced panel. Sew (1) 7 1/2" x 11 1/2" blue panel to the top of the 6 1/2" x 7 1/2" panel. Sew (1) 7 1/2" x 16 1/2" blue panel to the bottom. Add the remaining 4 1/2" x 7 1/2" diagonally striped piece. Finish with the last 7 1/2" x 12 1/2" blue panel. Sew completed strip to the right sides of the quilt.

11. For the top border - piece together the remaining assorted 5 1/2" strips in random order. The order on this quilt is the following: HM8820 2 1/2" metallic Camouflage, 1 1/2" CM1087 Aubergine, 3 1/2" CM1087 Cameo, 2 1/2" Solid Aubergine HM8820, 2 1/2" Antique metallic HM8820, 1 1/2" CM1087 Aubergine, (1) HM8820 Aubergine 2 1/2" metallic, 3 1/2" CM1087 Cameo

HM8820 Antique 2 1/2" metallic, 1 1/2" CM1087 Aubergine, 2 1/2" HM8820 Aubergine solid, CM1087 Cameo 3 1/2", HM88220 Antique metallic 2 1/2", CM1087 Aubergine 1 1/2", HM8820 Aubergine metallic 2 1/2", (1) HM8820 Aubergine 2 1/2" solid, (1) CM1087 Aubergine 1 1/2", (1) CM1087 Cameo 3 1/2", HM8820 2 1/2" Antique metallic, 1 1/2" CM1087 Aubergine, HM8820 Aubergine 2 1/2" metallic to make (1) 5 1/2" x 40 1/2" strip. Sew to the top of the quilt to finish.

12. Layer backing (Optional CM1087 Saturn), batting, and quilt top. Baste.
13. Quilt as desired.
14. Bind quilt using HM8820 Dirt 2 1/2" x W.O.F., metallic side out, strips. Pieced as needed for length.
15. For Large fringed flower centers: Press (1) HM8820 Aubergine 2 1/2" x 12 1/2" strip with 1" of the metallic edge exposed above the fold. Clip approximately every 1/4" along strip to within 1/4" of the fold. Using a threaded hand sewing needle and 1/4" stitches gather along the folded edge. Pull tightly, knot off, join ends together to make a circle. Pull out short fringe for more "fluff". Make (2). Repeat using HM8820 Aubergine 2" x 12 1/2". Make (1). For flower centers - use (1) 1" x 3 1/2" HM8820 Dirt piece. Fold in half lengthwise, solid to the inside. Press. Fold outer edges into the centerfold on each side. Press. This makes (1) 1/4" x 3 1/2" HM8820 Dirt metallic strip. Tie into a single knot. Thread ends into the center hole of the fringe circles. Secure knot in place. Attach (1) fringed center to each of the large flowers as shown. Put the smallest center in the smallest flower.





1 of 3

BUD

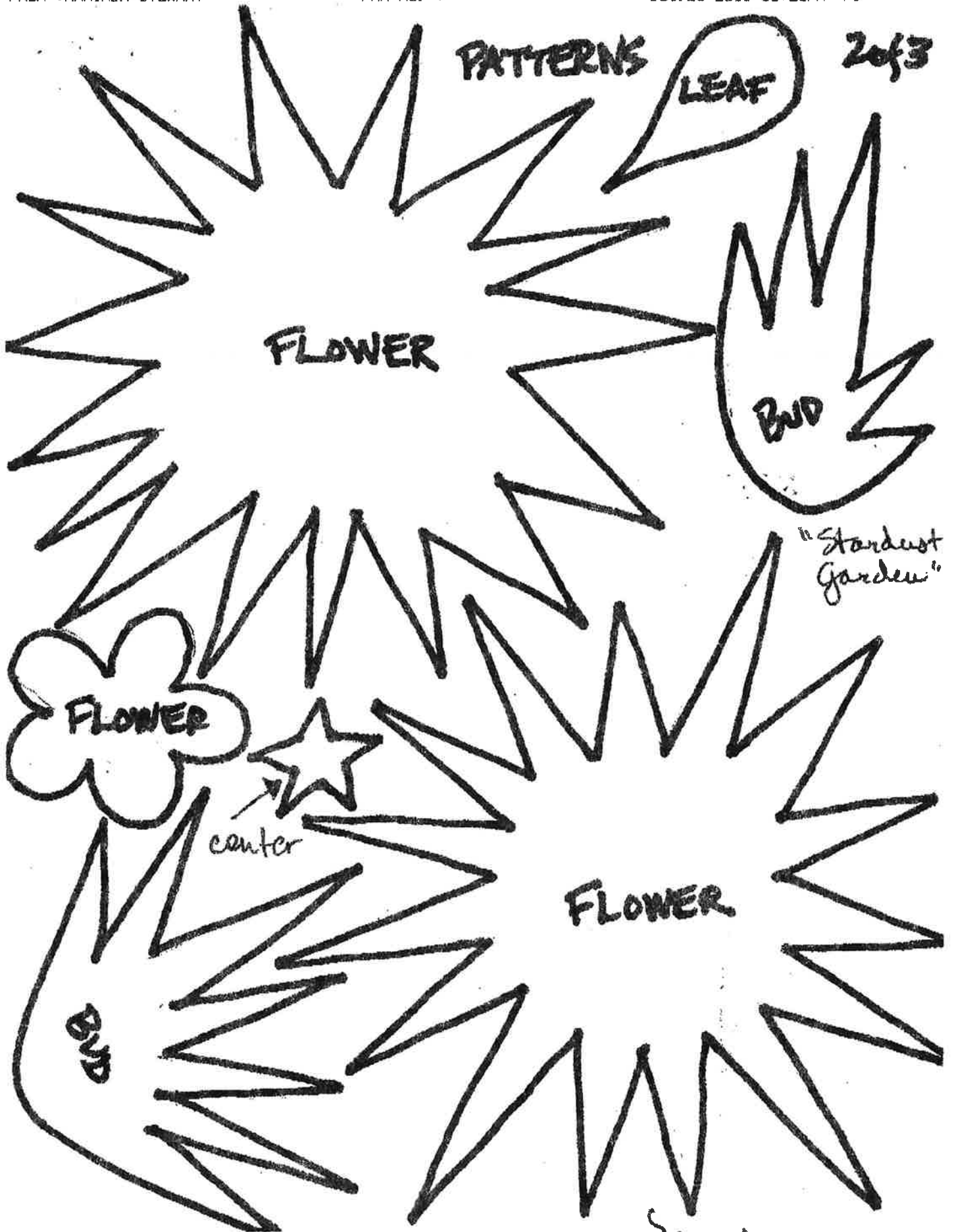
BUD

PATTERNS

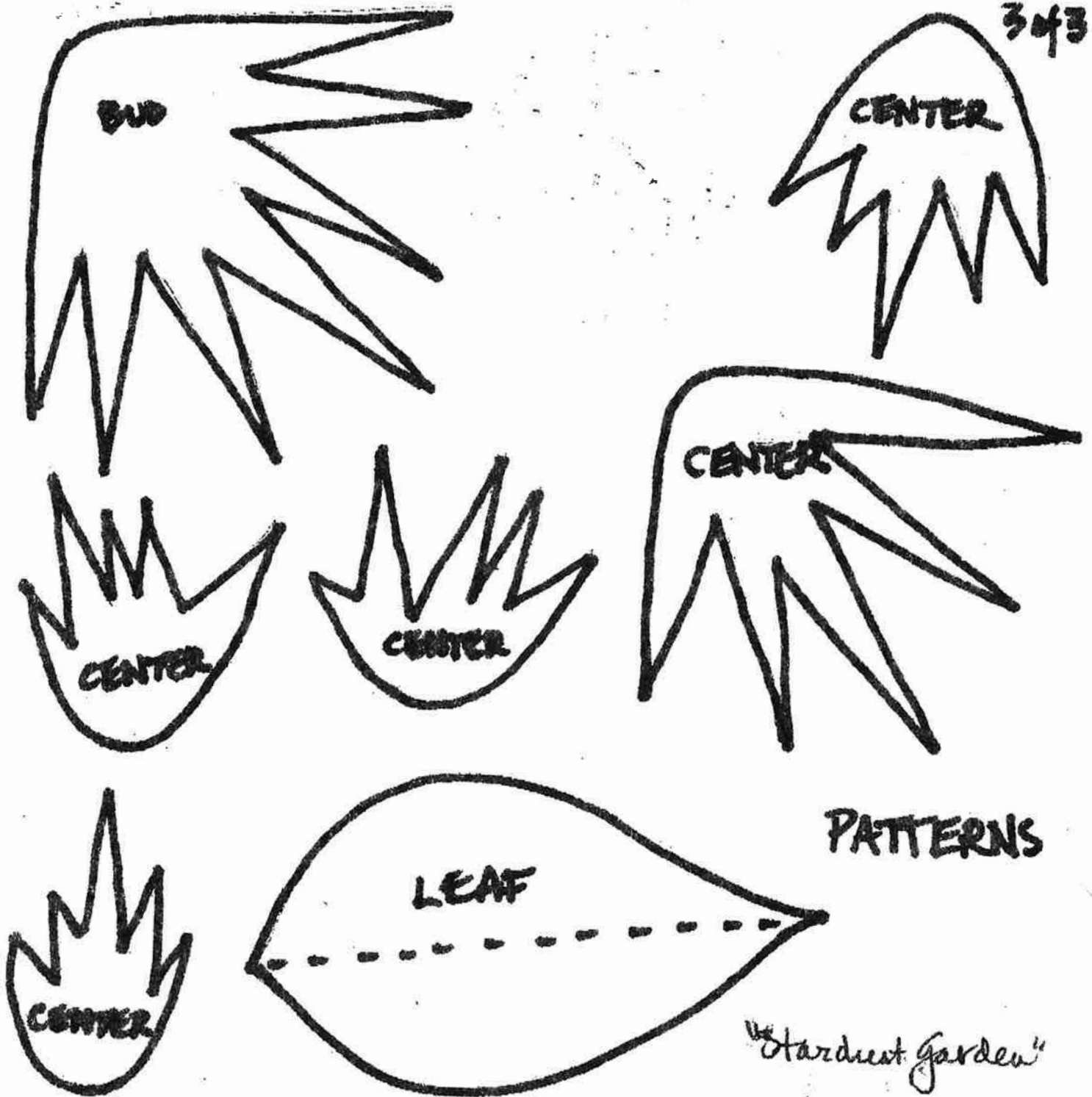
"Stardust Garden"

FLOWER





343



"Stardust Garden"

Sh... ..