

michael miller FABRICS

# KITSCHY COCKTAIL RUNNER

SIZE: 17" X 53" LEVEL: BEGINNER

PATTERN BY: STEPHANIE SHERIDAN

FABRIC COLLECTION: KITSCHY COCKTAILS



THIS IS A DIGITAL REPRESENTATION OF THE QUILT TOP, FABRIC MAY VARY.

PLEASE NOTE: BEFORE BEGINNING YOUR PROJECT, CHECK FOR ANY PATTERN UPDATES AT [MICHAELMILLERFABRICS.COM](http://MICHAELMILLERFABRICS.COM)'S FREE PROJECTS SECTION.

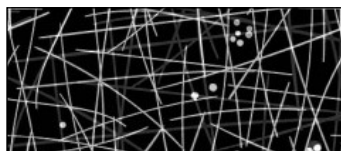
p.212.704.0774 | [info@michaelmillerfabrics.com](mailto:info@michaelmillerfabrics.com) | [www.michaelmillerfabrics.com](http://www.michaelmillerfabrics.com)



# KITSCHY COCKTAIL RUNNER



**FABRIC A**  
CX4414 BLUE  
FQ



**FABRIC B**  
CX8713 BLACK  
1/4 YD



**FABRIC C**  
CX8713 BLUE  
1/4 YD



**FABRIC D**  
CX8713 OLIVE  
1/4 YD



**FABRIC E**  
CX8713 RED  
1/2 YD



**FABRIC F**  
CX8714 BLACK  
1/8 YD



**FABRIC G**  
CX8716 CREAM  
5/8 YD



**FABRIC H**  
CX8718 CREAM  
1/2 YD

**BATTING: 21" X 57"**  
**BACKING: 1 YD (pieced)**

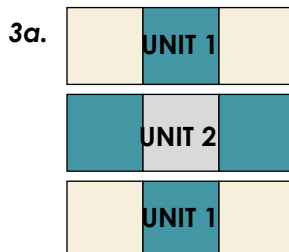
KEY	CUTTING INSTRUCTIONS
<b>A</b>	Fussy cut (5) 4-1/2" squares
<b>B</b>	(3) 1-1/2" X WOF strips, BORDER
<b>C</b>	(1) 4-1/2" X WOF strip, subcut (8) 4-1/2" squares
<b>D</b>	(1) 4-1/2" X WOF strip, subcut (8) 4-1/2" squares
<b>E</b>	(1) 4-1/2" X WOF strip, subcut (4) 4-1/2" squares (4) 2-1/4" X WOF strips, BINDING
<b>F</b>	(1) 3-1/2" X WOF strip, subcut (4) 3-1/2" squares
<b>G</b>	First cut (5) 3-1/2" X LOF strips for TOP/BOTTOM BORDER From remainder cut (2) 3-1/2" X 11-1/2" rectangles for SIDE BORDERS
<b>H</b>	(3) 4-1/2" X WOF strip, subcut (20) 4-1/2" squares



# KITSCHY COCKTAIL RUNNER

## BLOCK ASSEMBLY:

1. Sew (1) **H** 4-1/2" square to each side of (1) **C** 4-1/2" square to create **UNIT 1**. Make (4).
2. Sew (1) **C** 4-1/2" square to each side of (1) **A** 4-1/2" square to create **UNIT 2**. Make (2).
3. Sew (1) **UNIT 1** to the top and bottom of (1) **UNIT 2**, square to 12-1/2". Place a 9-1/2" square ruler over the block as shown below, then trim to complete **BLOCK 1**. Make (2).
4. Repeat steps 1-3 above using **H**, **D** and **A** squares to make **BLOCK 2**, make (2).  
*Note: change rotation of ruler for Block 2.*
5. Repeat steps 1-3 above using **H**, **E** and **A** squares to make **BLOCK 3**, make (1).



**BLOCK 1 (make 2)**



**BLOCK 2 (make 2)**



**BLOCK 3 (make 1)**



## RUNNER ASSEMBLY:

6. Sew blocks together into a row: BLOCK 1 - BLOCK 2 - BLOCK 3 - BLOCK 2 - BLOCK 1

## BORDER ASSEMBLY:

7. Sew (3) **B** 1-1/2" X WOF strips together via short ends using a straight seam. Measure sides of runner (ours is 9-1/2"), cut (2) **B** strips to fit and sew to sides of Runner. Measure top and bottom of runner (ours is 47-1/2"), cut (2) **B** strips to fit and sew to top and bottom of runner.
8. Sew (5) **G** 3-1/2" X LOF strips together via short ends using straight seam. Measure top and bottom of runner (ours is 47-1/2) and cut (2) **G** strips to fit, set aside.
9. Sew (2) **G** 3-1/2" X 11-1/2" strips to sides of runner.
10. Sew (1) **F** 3-1/2" square to each end of the **G** strips from Step 8, then sew **FGF** strips to top and bottom of runner.

**FINISHING:** Layer quilt top, batting and backing together to form quilt sandwich. Baste and quilt as desired. Bind using (4) **E** 2-1/4" strips.





# KITSCHY COCKTAIL RUNNER

QUILT DIAGRAM  
FINISHED SIZE: 17" x 53"

