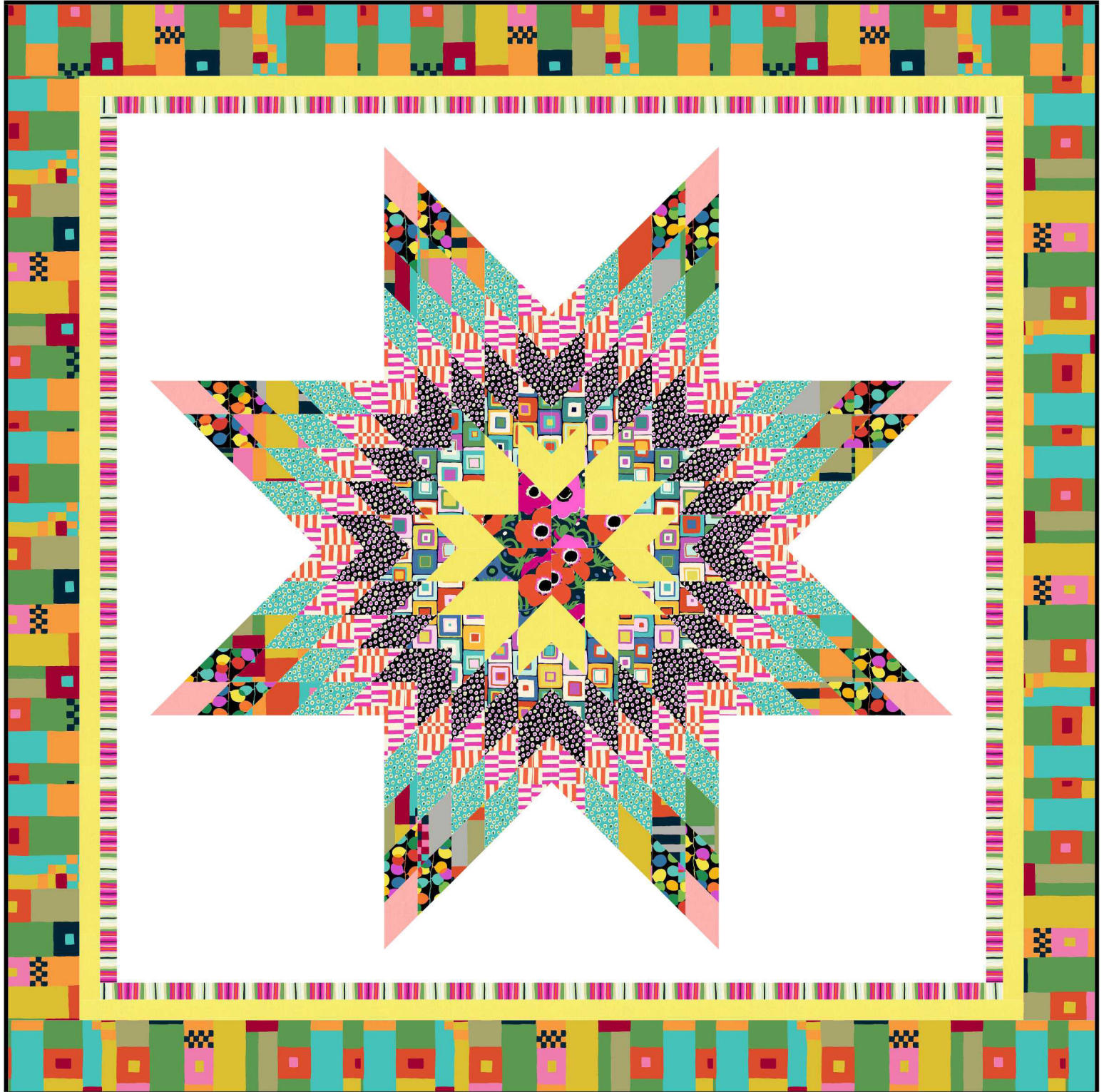


michael miller FABRICS

STARBURST QUILT

SIZE: 65"W X 65"H • LEVEL: INTERMEDIATE • PATTERN BY: WENDY SHEPPARD

FABRIC COLLECTION: ATELIER • FREE PATTERN AVAILABLE ON: MICHAELMILLERFABRICS.COM



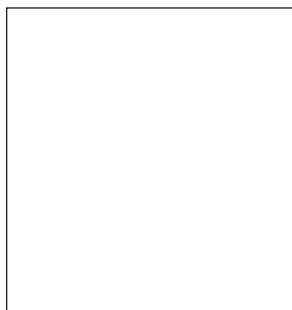
THIS IS A DIGITAL REPRESENTATION OF THE QUILT TOP, FABRIC MAY VARY.

PLEASE NOTE: BEFORE BEGINNING YOUR PROJECT, CHECK FOR ANY PATTERN UPDATES AT MICHAELMILLERFABRICS.COM'S FREE PROJECTS SECTION.

p.212.704.0774 | info@michaelmillerfabrics.com | www.michaelmillerfabrics.com



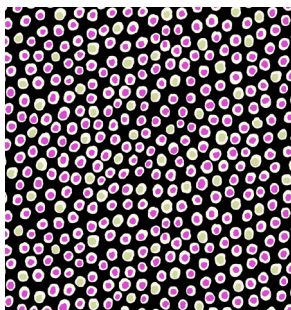
STARBURST QUILT



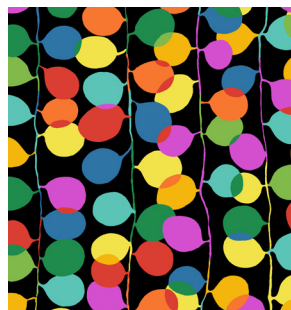
FABRIC A
SC5333-BRIGHT WHITE
COTTON COUTURE
2-3/8 YARDS



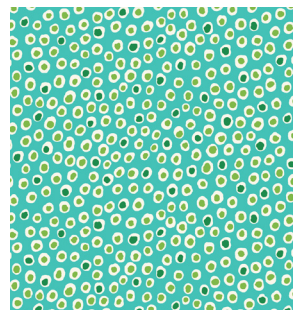
FABRIC B
DC8684-CHERRY
WIND FLOWERS
1/8 YARD



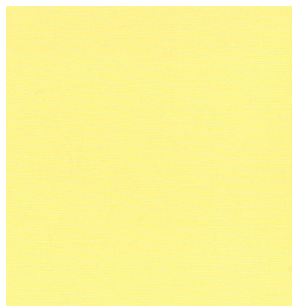
FABRIC C
DC8789-BLACK
SPOTTED
1/2 YARD



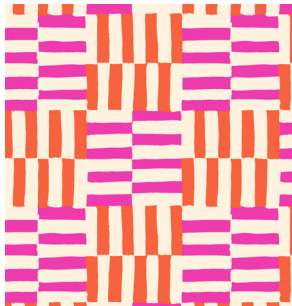
FABRIC D
DC8687-CHERRY
PARTY LIGHTS
3/8 YARD



FABRIC E
DC8789-MERMAID
SPOTTED
1/2 YARD



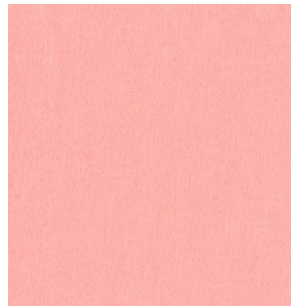
FABRIC F
SC5333-CANARY
COTTON COUTURE
7/8 YARD



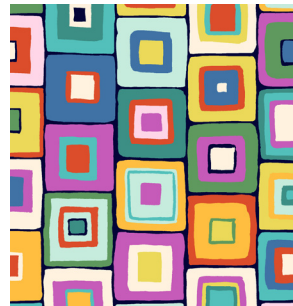
FABRIC G
DC8686-MAGENTA
ZING
1/2 YARD



FABRIC H
DC8682-CHERRY
COLOUR FIELDS
1-5/8 YARDS



FABRIC I
SC5333-BLUSH
COTTON COUTURE
1/8 YARD



FABRIC J
DC8683-CHERRY
PALETTE
3/8 YARD



FABRIC K
DC8790-MAGENTA
RHYTHMS
1/2 YARD



(BINDING)
SC5333-INDIGO
COTTON COUTURE
5/8 YARD



(BACKING)
YOUR CHOICE
4-1/4 YARDS



STARBURST QUILT

KEY	CUTTING INSTRUCTIONS
A	a. lone star (4) 14 7/8" squares, cut once on diagonal (triangle A) (4) 10 7/8" squares, cut once on diagonal (triangle B) b. inner border # (6) 2 1/2" x wof. Piece strips and subcut (2) 2 1/2" x 48 1/2" and (2) 2 1/2" x 52 1/2" strips.
B	a. lone star ring #1 (4) Template C and (4) Template D pieces.
C	a. lone star ring #4 (16) Template C and (16) Template D pieces.
D	a. lone star ring #8 (8) Template C and (8) Template D pieces.
E	a. lone star ring #6 (16) Template C and (16) Template D pieces.
F	a. lone star ring #2 (8) Template C and (8) Template D pieces. b. inner border #3 (6) 1 3/4" x wof. Piece strips and subcut (2) 1 3/4" x 55" and (2) 1 3/4" x 57 1/2" strips.
G	a. lone star ring #5 (20) Template C and (12) Template D pieces.
H	a. lone star ring #7 (12) template C and (12) Template D pieces. b. outer border (7) 4 1/2" x wof. Piece strips and subcut (2) 4 1/2" x 57 1/2" and (2) 4 1/2" x 65 1/2" strips.
I	a. lone star ring #9 (4) Template C and (4) Template D pieces.
J	a. lone star ring #3 (12) Template C and (12) Template D pieces.
K	a. inner border #2 (6) 1 3/4" x wof. Piece strips and subcut (2) 1 3/4" x 52 1/2" and (2) 1 3/4" x 55" strips
L	a. binding (7) 2 1/4" x WOF Strips



STARBURST QUILT

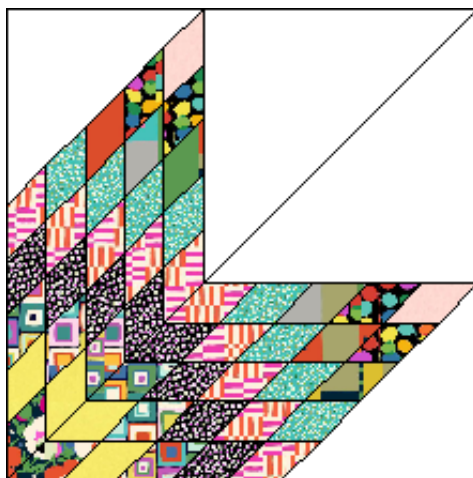
Constructing Quilt Center (Finished Size 48" x 48")

Block Quadrants

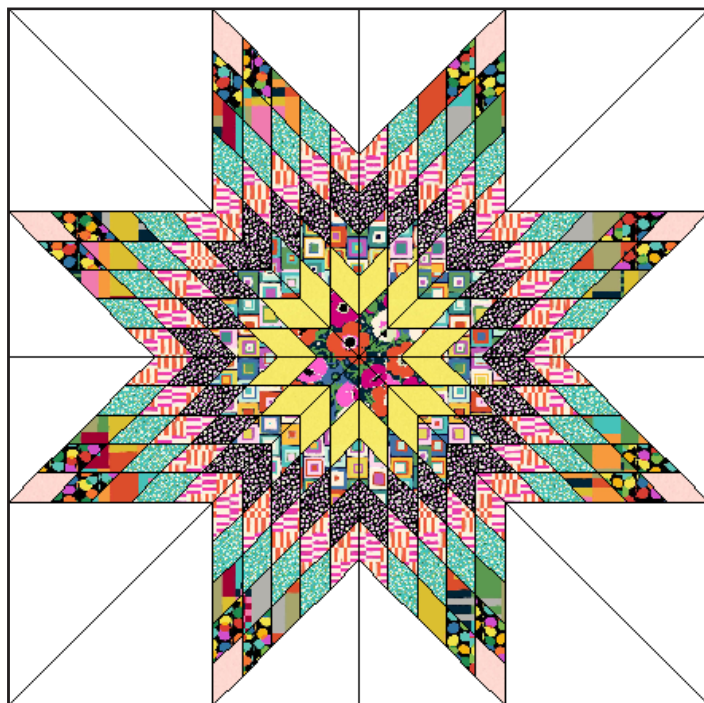
1. Using quilt image as guide for fabric placement, arrange and sew together (25) Template C pieces to make a pieced diamond unit. Add (1) Fabric A Triangle B and (1) Fabric A Triangle A pieces to complete (1) Diamond unit. (Note placement of triangles for each Diamond unit.)

Repeat for the second Diamond units using (25) Template D pieces and (1) Fabric A Triangle B and (1) Fabric A Triangle A piece to complete second Diamond unit.

Sew both Diamond units together as shown to make (1) block quadrant. Square to 24 1/2" x 24 1/2" raw edge to raw edge. (Refer to last page)



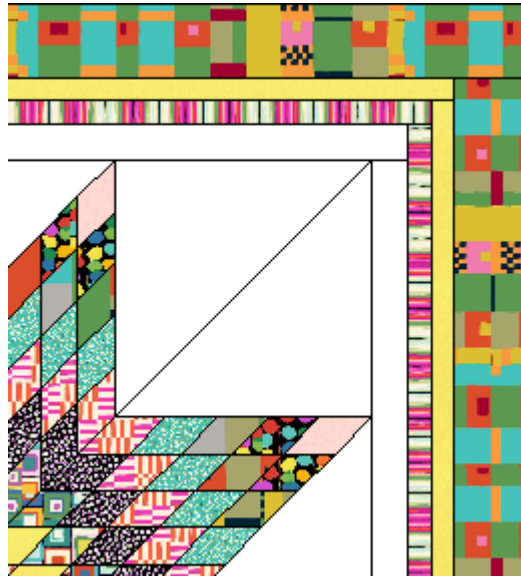
2. Make a total of (4) block quadrants. Sew together quadrants to complete quilt center. Quilt center measures 48 1/2" x 48 1/2" raw edge to raw edge



STARBURST QUILT

Quilt Top Assembly

1. Inner border #1. Sew (2) 2 1/2" x 48 1/2" **Fabric A** strips to the opposite sides of quilt center, followed by (2) 2 1/2" x 52 1/2" **Fabric A** strips to the remaining opposite sides of quilt center.
2. Inner border #2. Sew (2) 1 3/4" x 52 1/2" **Fabric K** strips to the opposite sides of quilt center, followed by (2) 1 3/4" x 55" **Fabric K** strips to the remaining opposite sides of quilt center.
3. Inner border #3. Sew (2) 1 3/4" x 55" **Fabric F** strips to the opposite sides of quilt center, followed by (2) 1 3/4" x 57 1/2" **Fabric F** strips to the remaining opposite sides of quilt center.
4. Outer border. Sew (2) 4 1/2" x 57 1/2" **Fabric H** strips to the opposite sides of quilt center, followed by (2) 4 1/2" x 65 1/2" **Fabric H** strips to the remaining opposite sides of quilt center to complete quilt top.



FINISHING:

1. With the backing fabric laying taut, place batting and then quilt top to form quilt sandwich. Baste sandwich.
2. Quilt as desired.
3. Bind to finish quilt.

STARBURST QUILT

DIAGRAMS & TEMPLATES:

