

michael miller FABRICS

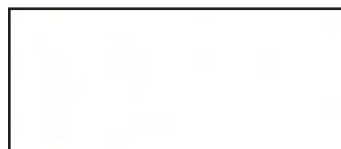
JUST SPOOLIN' QUILT

SIZE 53-1/2"W X 61-1/2"H | LEVEL CONFIDENT BEGINNER | PATTERN BY WENDY SHEPPARD



*THIS IS A DIGITAL REPRESENTATION OF THE QUILT TOP. FABRIC MAY VARY.
FREE PATTERN AVAILABLE ON MICHAELMILLERFABRICS.COM

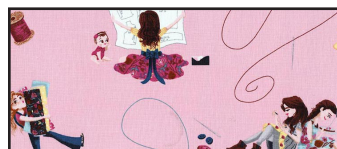
JUST SPOOLIN' QUILT



FABRIC A
SC5333 BRIGHT WHITE
COTTON COUTURE
2 YARDS



FABRIC B
DC8462 AQUA
LITTLE STITCHES
1/4 YARD



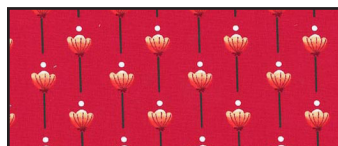
FABRIC C
DC8462 BLUSH
LITTLE STITCHES
1/4 YARD



FABRIC D
DC8462 CREAM
LITTLE STITCHES
1 YARD



FABRIC E
DC8463 CORAL
LET KINDNESS GROW
7/8 YARDS
*INCLUDES BINDING



FABRIC F
DC8463 HOT PINK
LET KINDNESS GROW
1/4 YARD



FABRIC G
DC8463 AQUA
LET KINDNESS GROW
1/4 YARD



FABRIC H
DC8467 MAUVE
SUNLIT BLOOMS
1/4 YARD



FABRIC I
DC8463 GOLD
LET KINDNESS GROW
1/4 YARD



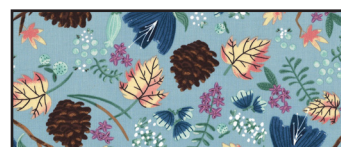
FABRIC J
DC8463 LILAC
LET KINDNESS GROW
1/4 YARD



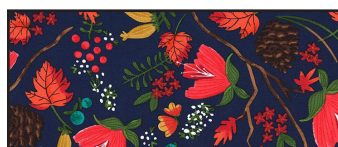
FABRIC K
DC8466 CRANBERRY
LIVE LIFE IN FULL BLOOM
1/4 YARD



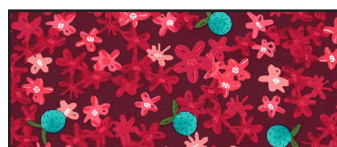
FABRIC L
DC8467 NAVY
SUNLIT BLOOMS
1/4 YARD



FABRIC M
DC8466 AQUA
LIVE LIFE IN FULL BLOOM
1/4 YARD



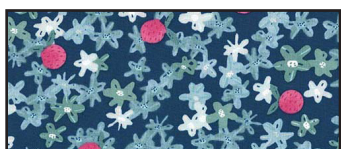
FABRIC N
DC8466 NAVY
LIVE LIFE IN FULL BLOOM
1/2 YARD



FABRIC O
DC8467 CRANBERRY
SUNLIT BLOOMS
1/4 YARD



FABRIC P
DC8466 PINK
LIVE LIFE IN FULL BLOOM
1/4 YARD



FABRIC Q
DC8467 BLUE
SUNLIT BLOOMS
1/4 YARD



(BACKING)
YOUR CHOICE
4-3/8 YARDS



JUST SPOOLIN' QUILT

KEY	CUTTING INSTRUCTIONS
A	<p>a. Pieced blocks (35) (5) 1 1/2" x wof. Subcut (140) 1 1/2" x 1 1/2" squares. (3) 5 1/2" x wof. Subcut (70) 1 1/2" x 5 1/2" rectangles. (3) 8 1/2" x wof. Subcut (70) 1 1/2" x 8 1/2" rectangles.</p> <p>b. inner border #1 (5) 2 1/2" x wof. Piece strips and subcut (2) 2 1/2" x 44 1/2" and (2) 2 1/2" x 56 1/2" strips.</p>
B	<p>Pieced blocks (4) (1) 5 1/2" x wof. Subcut (2) 4 1/2" x 5 1/2" and (2) 5 1/2" x 4 1/2" rectangles.</p>
C	<p>Pieced blocks (5) (1) 5 1/2" x wof. Subcut (5) 4 1/2" x 5 1/2" rectangles</p>
D	<p>Outer border (6) 4 1/2" x wof. Piece strips and subcut (2) 4 1/2" x 54" and (2) 4 1/2" x 62" strips.</p>
E	<p>(6) 2 1/4" x wof. (Binding) Pieced blocks (5) (2) 2" x wof. Subcut (10) 2" x 6 1/2" rectangles.</p>
F	<p>Pieced blocks (5) (2) 2" x wof. Subcut (10) 2" x 6 1/2" rectangles.</p>
G	<p>Pieced blocks (5) (2) 2" x wof. Subcut (10) 2" x 6 1/2" rectangles.</p>
H	<p>Pieced blocks (5) (2) 2" x wof. Subcut (10) 2" x 6 1/2" rectangles.</p>
I	<p>Pieced blocks (4) (1) 5 1/2" x wof. Subcut (2) 5 1/2" x 4 1/2" and (3) 4 1/2" x 5 1/2" rectangles.</p>
J	<p>Pieced blocks (4) (2) 2" x wof. Subcut (8) 2" x 6 1/2" rectangles.</p>
K	<p>Pieced blocks (4) (2) 2" x wof. Subcut (8) 2" x 6 1/2" rectangles.</p>
L	<p>Pieced blocks (4) (2) 2" x wof. Subcut (8) 2" x 6 1/2" rectangles.</p>



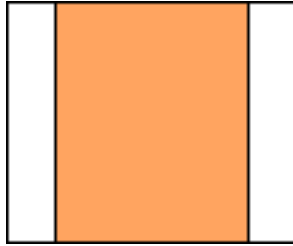
JUST SPOOLIN' QUILT

KEY	CUTTING INSTRUCTIONS
M	Pieced blocks (4) (1) 5 1/2" x wof. Subcut (4) 4 1/2" x 5 1/2" rectangles.
N	a. pieced blocks (5) (1) 5 1/2" x wof. Subcut (5) 4 1/2" x 5 1/2" rectangles. b. inner border #2 (6) 1 1/4" x wof. Piece strips and subcut (2) 1 1/4" x 46" and (2) 1 1/4" x 60 1/2" strips.
O	Pieced blocks (5) (1) 5 1/2" x wof. Subcut (5) 4 1/2" x 5 1/2" rectangles
P	Pieced blocks (7) (1) 2" x wof. Subcut (6) 2" x 6 1/2" rectangles. (1) 5 1/2" x wof. Subcut (4) 4 1/2" x 5 1/2" rectangles.
Q	Pieced blocks (3) (1) 5 1/2" x wof. Subcut (3) 4 1/2" x 5 1/2" rectangles.

JUST SPOOLIN' QUILT

Constructing Pieced Blocks

1. Sew (2) $1\frac{1}{2}$ " x $5\frac{1}{2}$ " Fabric A rectangles to the left and right sides of (1) $4\frac{1}{2}$ " x $5\frac{1}{2}$ " print fabric rectangle.

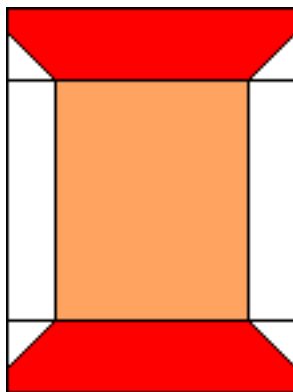


2. Draw a diagonal line on the wrong side of (1) $1\frac{1}{2}$ " x $1\frac{1}{2}$ " Fabric A square. Place square, right sides together, at a corner of (1) 2 " x $6\frac{1}{2}$ " print fabric rectangle. Sew on drawn line. Trim $\frac{1}{4}$ " away from sewn line. Open and press to reveal Fabric A corner triangle. Repeat with another $1\frac{1}{2}$ " x $1\frac{1}{2}$ " Fabric A square at the opposite corner as shown.



Make a total of (2) sewn units.

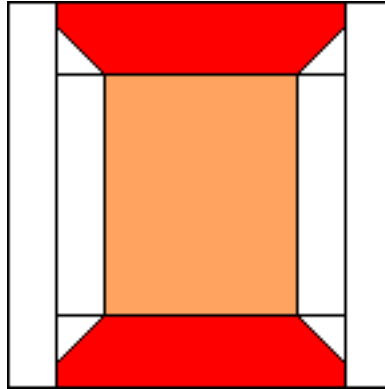
3. Sew units made in step 2 to the top and bottom of unit made in step 1 to make a spool unit.



4. Sew (2) $1\frac{1}{2}$ " x $8\frac{1}{2}$ " Fabric A rectangles to the left and right sides of spool unit to complete (1) block.



JUST SPOOLIN' QUILT



5. Make a total number of blocks in the following combinations:

5 Blocks: C/H, I/F, N/E, O/G

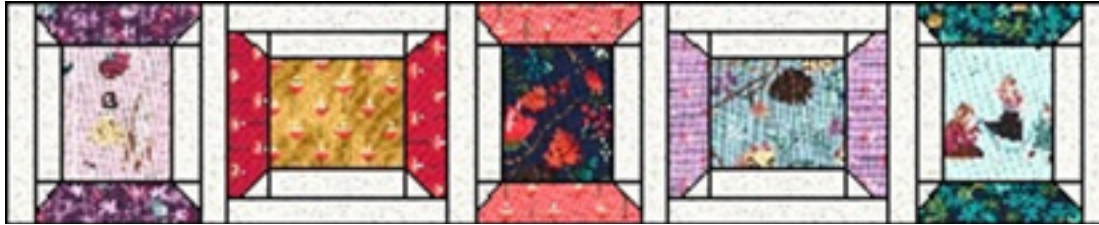
4 Blocks: M/J, B/L, P/K

3 Blocks: Q/P

JUST SPOOLIN' QUILT

Quilt Center Assembly

1. Pieced rows. Refer to quilt image for block placement and orientations, arrange and sew together (5) pieced blocks to make a pieced row. Make a total of (7) pieced rows. Diagram of pieced row 1 is shown below (enlarged for reference, not to scale)



2. Sew pieced rows together to complete quilt center.



JUST SPOOLIN' QUILT

Quilt Top Assembly

1. Inner border #1. Sew (2) 2 1/2" x 56 1/2" Fabric A strips to the opposite long sides of quilt center, followed by (2) 2 1/2" x 44 1/2" Fabric A strips to the remaining opposite short sides of quilt center.
2. Inner border #2. Sew (2) 1 1/4" x 60 1/2" Fabric N strips to the opposite long sides of quilt center, followed by (2) 1 1/4" x 46" Fabric N strips to the remaining opposite short sides of quilt center.
3. Outer border. Sew (2) 4 1/2" x 62" Fabric D strips to the opposite long sides of quilt center, followed by (2) 4 1/2" x 54" Fabric D strips to the remaining opposite short sides of quilt center to complete quilt top.





JUST SPOOLIN' QUILT

Finishing

1. With the backing fabric laying taut, place batting and then quilt top to form quilt sandwich. Baste sandwich.
2. Quilt as desired.
3. Bind to finish quilt using Fabric E.