

PLAYFUL PIXIES QUILT

SIZE: 51-1/2"Wx 56-1/2"H • LEVEL: CONFIDENT BEGINNER • PATTERN BY: WENDY SHEPPARD
FABRIC COLLECTION: THE PIXIE COLLECTION • FREE PATTERN AVAILABLE ON: MICHAELMILLERFABRICS.COM



THIS IS A DIGITAL REPRESENTATION OF THE QUILT TOP, FABRIC MAY VARY.

PLEASE NOTE: BEFORE BEGINNING YOUR PROJECT, CHECK FOR ANY PATTERN UPDATES AT MICHAELMILLERFABRICS.COM'S FREE PROJECTS SECTION.

p.212.704.0774 | info@michaelmillerfabrics.com | www.michaelmillerfabrics.com



PLAYFUL PIXIES QUILT



FABRIC A
CX1065-SNOW
GARDEN PINDOT
1-1/8 YARDS



FABRIC B
CX1065 CARIBBEAN
GARDEN PINDOT
1/8 YARD



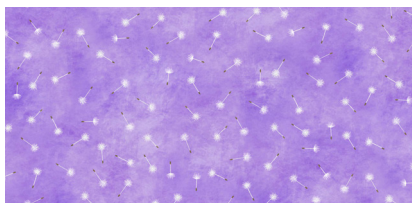
FABRIC C
DC8968-APRICOT
DELICATE DANDELIONS
1/4 YARD



FABRIC D
DC8968 BLUE
DELICATE DANDELIONS
1/8 YARD



FABRIC E
DC8968 KIWI
DELICATE DANDELIONS
1/8 YARD



FABRIC F
DC8968 PURPLE
DELICATE DANDELIONS
1/8 YARD



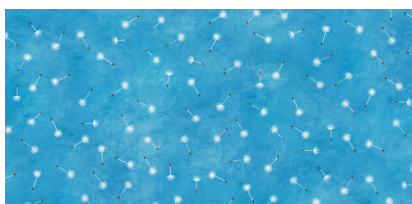
FABRIC G
DC8968-YELLOW
DELICATE DANDELIONS
1/4 YARD



FABRIC H
DDC8970-BRIGHT WHITE
WISPY WISHES
1-5/8 YARDS



FABRIC I
DDC8971-SKY
PIXIE PETALS
5/8 YARD



(BINDING)
DC8968 BLUE
DELICATE DANDELIONS
5/8 YARD



FABRIC J
DDC8972 SKY
PIXIELATED
1 PANEL REPEAT (2/3 YARD)



(BACKING)
YOUR CHOICE
3-1/2 YARDS



PLAYFUL PIXIES QUILT

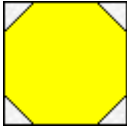
KEY	CUTTING INSTRUCTIONS
A	<p>a. quilt center sashing strips (2) 1 1/2" x 40 1/2" strips</p> <p>b. quilt center pieced blocks (12) flower blocks: (5) 1" x wof. Subcut (192) 1" x 1" squares. leaf blocks: (1) 1 1/4" x wof. Subcut (24) 1 1/4" x 1 1/4" squares (1) 2 1/2" x wof. Subcut (12) 1 1/2" x 2 1/4" and (12) 2" x 2 1/4" rectangles.</p> <p>patch blocks: (1) 4 1/2" x wof. Subcut (2) 4 1/2" x 4 1/2" squares.</p> <p>c. inner border #1 (4) 2" x wof. Subcut (2) 2" x 38 1/2" and (2) 2" x 40 1/2" strips.</p> <p>d. inner border #3 (5) 1 3/4" x wof. Piece strips and subcut (2) 1 3/4" x 47" and (2) 1 3/4" x 49 1/2" strips.</p>
B	<p>a. quilt center pieced blocks (2) (1) 2 1/2" x wof. Subcut (8) 2 1/2" x 2 1/2" squares.</p>
C	<p>a. quilt center flower blocks (4) (1) 2 1/2" x wof. Subcut (16) 2 1/2" x 2 1/2" squares.</p>
D	<p>a. quilt center sashing strips (2) 1" x wof. Subcut (2) 1" x 40 1/2" strips.</p>
E	<p>a. quilt center leaf blocks (6) (1) 1" x wof. Subcut (6) 1" x 4 1/2" rectangles. (1) 2" x wof. Subcut (12) 2" x 2 1/4" rectangles.</p>
F	<p>a. quilt center flower blocks (2) (1) 2 1/2" x wof. Subcut (8) 2 1/2" x 2 1/2" squares.</p>
G	<p>a. quilt center flower blocks (4) (1) 2 1/2" x wof. Subcut (16) 2 1/2" x 2 1/2" squares.</p>
H	<p>a. inner border #2 CENTERING DESIGNS ALONG DARK BLUE STRIPES, CUT LENGTHWISE (2) 3 1/2" x 48" and (2) 3 1/2" x 53" strips.</p>
I	<p>a. outer border (6) 3" x wof. Piece strips and subcut (2) 3" x 56" and (2) 3" x 60" strips.</p>
J	<p>a. quilt center (1) 24 1/2" x 40 1/2" rectangle, centering design.</p>



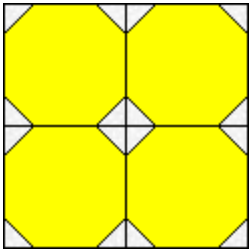
PLAYFUL PIXIES QUILT

Constructing flower blocks

1. Draw a diagonal line on the wrong side of (1) $1" \times 1"$ A square. Place square, right sides together, at a corner of (1) $2\frac{1}{2}" \times 2\frac{1}{2}"$ print square. Sew on drawn line. Trim $\frac{1}{4}"$ away from sewn line. Open and press to reveal A corner triangle. Repeat with (3) additional $1" \times 1"$ A squares at the remaining corner of the same print square to make a block quadrant, measuring $2\frac{1}{2}" \times 2\frac{1}{2}"$ raw edge to raw edge.



Make a total of (4) quadrant units and sew together to make a flower block. Block measures $4\frac{1}{2}" \times 4\frac{1}{2}"$ raw edge to raw edge.



2. Make a total number of blocks for the following prints:

4 blocks: C, G

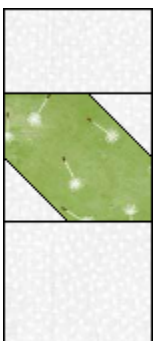
2 blocks: B, F

Constructing leaf blocks

1a. Draw a diagonal line on the wrong side of (1) $1\frac{1}{4}" \times 1\frac{1}{4}"$ A square. Place square, right sides together, at top right corner of (1) $2" \times 2\frac{1}{4}"$ E rectangle. Sew on drawn line. Trim $\frac{1}{4}"$ away from sewn line. Open and press to reveal A corner triangle. Repeat with another $1\frac{1}{4}" \times 1\frac{1}{4}"$ A square at the bottom left corner of the same E rectangle. Unit measures $2" \times 2\frac{1}{4}"$ raw edge to raw edge.



1b. Sew (1) $1\frac{1}{2}" \times 2\frac{1}{4}"$ A rectangle to the top of the unit made in step 1a, followed by (1) $2" \times 2\frac{1}{4}"$ A rectangle to the bottom to complete left section of leaf block. Section measures $2\frac{1}{4}" \times 4\frac{1}{2}"$ raw edge to raw edge.



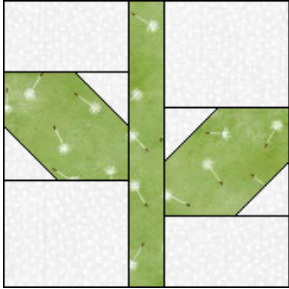


PLAYFUL PIXIES QUILT

1c. Make a mirror-imaged unit of the unit made in step 1a. Sew (1) $2'' \times 2 \frac{1}{4}''$ A rectangle to the top of unit, followed by (1) $1 \frac{1}{2}'' \times 2 \frac{1}{4}''$ A rectangle to the bottom to complete right section of leaf block. Section measure $2 \frac{1}{4}'' \times 4 \frac{1}{2}''$ raw edge to raw edge.



2. Sew left and right leaf sections to the opposite long sides of (1) $1'' \times 4 \frac{1}{2}''$ E rectangle to complete (1) leaf block. Make a total of (6) leaf blocks. Block measures $4 \frac{1}{2}'' \times 4 \frac{1}{2}''$ raw edge to raw edge."



Quilt Center Assembly

1. Sew (2) $1 \frac{1}{8}'' \times 40 \frac{1}{2}''$ D strips to the left and right sides of cut $24 \frac{1}{2}'' \times 40 \frac{1}{2}''$ panel rectangle, followed by (2) $1 \frac{1}{2}'' \times 40 \frac{1}{2}''$ A strips.

PLAYFUL PIXIES QUILT



2. Refer to quilt image for block placement, arrange and sew together (3) leaf blocks, (6) flower blocks and (1) 4 1/2" x 4 1/2" A patch blocks to make a column. Make (2) columns and sew to the left and right sides to complete quilt center.

PLAYFUL PIXIES QUILT



Quilt Top Assembly

1. Inner border #1. Sew (2) 2" x 40 1/2" A strips to the opposite long sides of quilt center, followed by (2) 2" x 38 1/2" A strips to the remaining opposite short sides of quilt center.
2. Inner border #2. Sew (2) 3 1/2" x 53" H strips to the left and right sides and (2) 3 1/2" x 48" H strips to the top and bottom of quilt center, matching the strip center to quilt center. Begin and end seams a general 1/4" from each end. Close corners with mitered corners. Quilt center should now measure 44 1/2" x 49 1/2" raw edge to raw edge.
3. Inner border #3. Sew (2) 1 3/4" x 49 1/2" A strips to the opposite long sides of quilt center, followed by (2) 1 3/4" x 47" A strips to the remaining opposite short sides of quilt center.
4. Outer border. Sew (2) 3" x 60" I strips to the left and right sides and (2) 3" x 56" I strips to the top and bottom of quilt center, matching the strip center to quilt center. Begin and end seams a general 1/4" from each end. Close corners with mitered corners to complete quilt top.