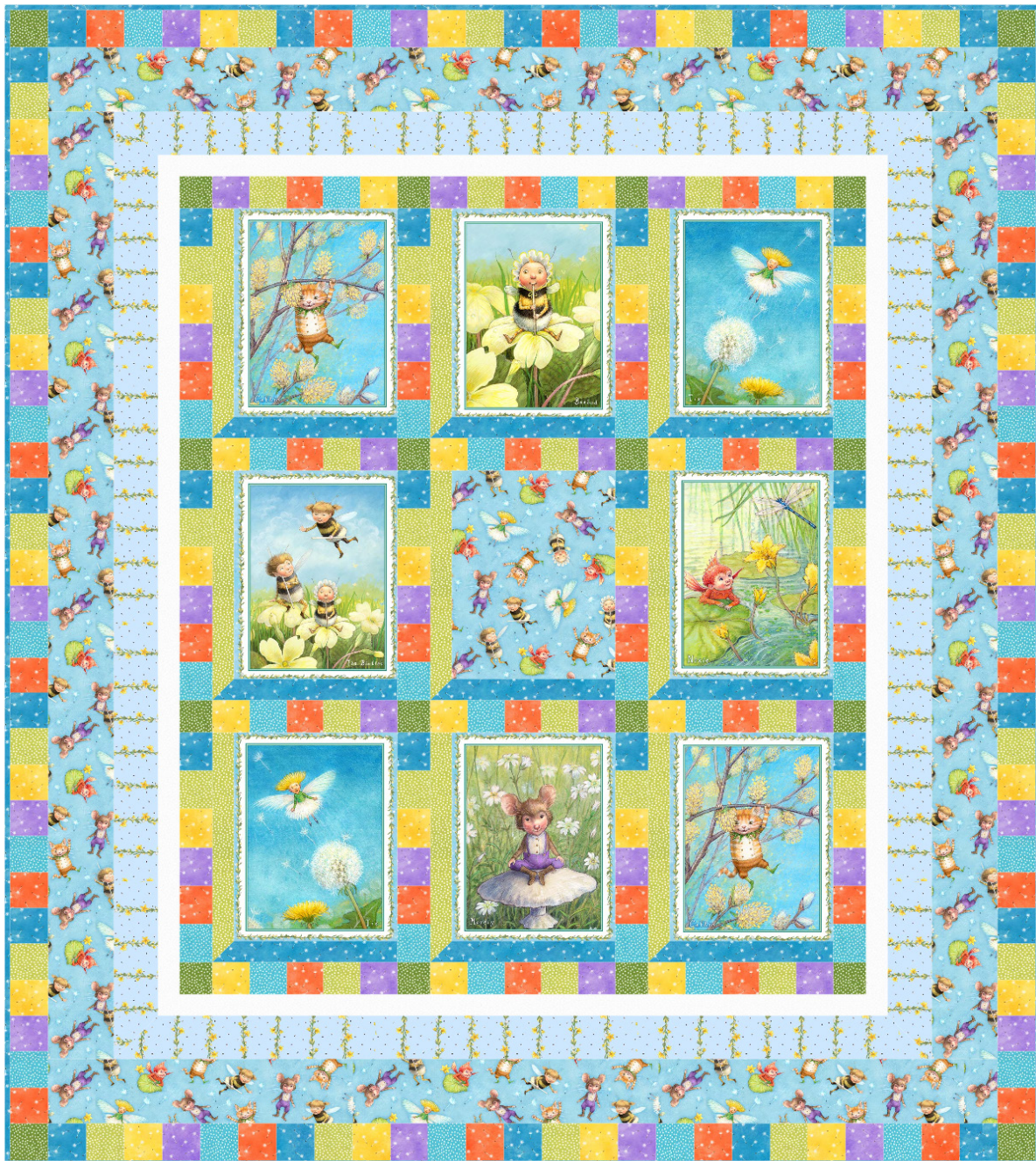


michael miller FABRICS

PIXIES PLEASE

SIZE: 48-1/2" x 55" • LEVEL: ADVANCED BEGINNER • PATTERN BY: MARSHA EVANS MOORE • NEW PIXIES
PATTERN AVAILABLE ON: 11.30.2019



THIS IS A DIGITAL REPRESENTATION OF THE QUILT TOP, FABRIC MAY VARY.

PLEASE NOTE: BEFORE BEGINNING YOUR PROJECT, CHECK FOR ANY PATTERN UPDATES AT MICHAELMILLERFABRICS.COM'S FREE PROJECTS SECTION.

p.212.704.0774 | info@michaelmillerfabrics.com | www.michaelmillerfabrics.com



PIXIES PLEASE



FABRIC A
DDC8964 Sky
1 Panel



FABRIC B
DDC8969 SKY
3/4 Yards



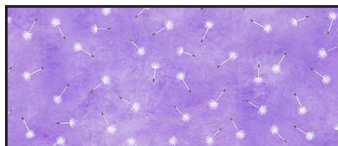
FABRIC C
DDC8971 Sky
7/8 Yard



FABRIC D
DC8968 Blue
3/4 Yard
includes binding



FABRIC E
DC8968 Apricot
1/4 Yard



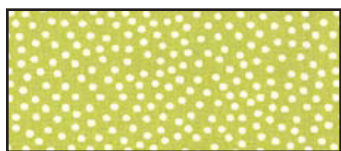
FABRIC F
DC8968 Purple
1/4 Yard



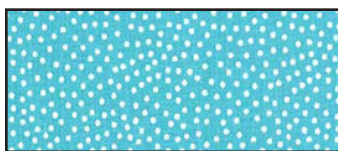
FABRIC G
DC8968 Yellow
1/4 Yard



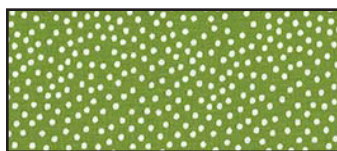
FABRIC H
CX1065 Snow
1/4 Yard



FABRIC I
CX1065 Fern
3/8 Yard



FABRIC J
CX1065 Carribean
1/4 Yard



FABRIC K
CX1065 Avocado
1/4 Yard



PIXIES PLEASE

KEY	CUTTING INSTRUCTIONS
A	Fussy cut: (8) 8" x 10-1/4" rectangles centered over panels.
B	(5) 3-1/2" x 42" strips; sew short ends together. Subcut (2) 3-1/2" x 45-3/4" borders and (2) 3-1/2" x 45" borders. (1) 8" x 10-1/4" rectangle.
C	(5) 2-1/2" x 42" strips; sew short ends together. Subcut (2) 2-1/2" x 40" borders and (2) 2-1/2" x 46-3/4" borders; trim ends diagonally.
D	FOR BINDING: (6) 2-1/4" x 42" strips, sew short ends together. (2) 2-1/4" x 42" strips; subcut (32) 2-1/4" squares. (3) 1-1/2" x 42" strips; subcut (9) Frame Template 2.
E	(2) 2-1/4" x 42" strips; subcut (39) 2-1/4" squares.
F	(3) 2-1/4" x 42" strips; subcut (42) 2-1/4" squares.
G	(3) 2-1/4" x 42" strips; subcut (32) 2-1/4" squares.
H	(4) 1-1/2" x 42" strips; sew short ends together. Subcut (2) 1-1/2" x 39-3/4" and (2) 1-1/2" x 35".
I	(2) 2-1/4" x 42" strips; subcut (32) 2-1/4" squares. (3) 1-1/2" x 42" strips; subcut (9) Frame Template 1.
J	(3) 2-1/4" x 42" strips; subcut (32) 2-1/4" squares.
K	(1) 2-1/4" x 42" strips; subcut (16) 2-1/4" squares.
	Backing 3 Yards Batting 56" x 64"

ADDITIONAL MATERIALS

Thread to match fabrics

Template plastic

Rotary Cutter, Ruler and Mat

Sewing machines

Iron

Basic sewing supplies

PIXIES PLEASE

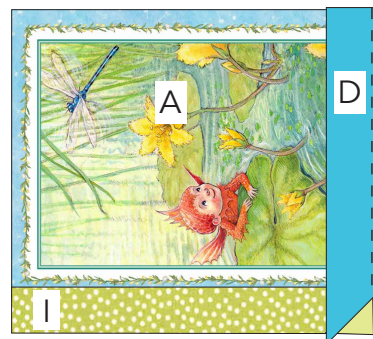
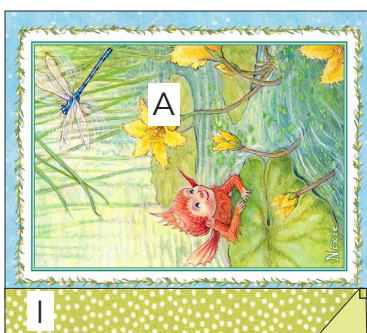
BLOCKS

1. Sew (1) I Frame Template 1 to the left side of (1) A 8" x 10-3/4" rectangle beginning the stitching at the corner of the seam allowance.
2. Fold the pointed end of Frame Template 1 away from the corner of the seamline. Sew (1) D Template 2 to the bottom of the rectangle ending the stitching at the corner of the seam allowance.

Step 1



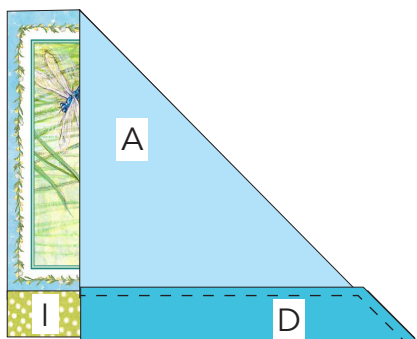
Step 2



3. Sew Frame Template 1 and Frame template 2 together along the diagonal ends beginning the stitching at the corner of the seam allowance.

4. In the same way, make (7) additional blocks using the A panels and (1) block using B 8" x 10-1/4" rectangle. Each block should measure 9" x 11-1/4" including seam allowance. Make 1 each.

Step 3



Step 4



Additional Blocks shown on page 4.

PIXIES PLEASE

Step 4



SASHING

5. Sew (1) F, (1) I, (1) E, (1) J and (1) G 2-1/4" squares together using slightly more than a 1/4" seam allowance so each horizontal sashing measures 2-1/4" x 9" and the squares are all approximately the same width within the seam lines. Make 12.



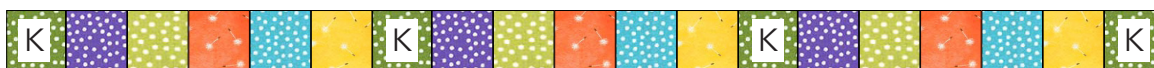
Make 12

6. Sew (1) D, (1) I, (1) G, (1) F, (1) E and (1) J 2-1/4" squares together using slightly less than a 1/4" seam allowance so each vertical sashing measures 2-1/4" x 11-1/4" and the squares are all approximately the same length within the seam lines. Make 12.



Make 12

7. Sew (4) K 2-1/4" squares alternating with (3) horizontal sashing strips together to make the sashing rows. Make 4.



Make 4

8. Sew (4) vertical sashing rows and (3) blocks together to make the block rows following the Quilt Layout on page 6. Make 3 rows.

Row 1





PIXIES PLEASE

BORDERS

9. Following the Quilt Layout on page 6, sew (1) **H** 1-1/2" x 39-3/4" border to sides of quilt. Sew (1) **H** 1-1/2" x 35" border to top and bottom of quilt.

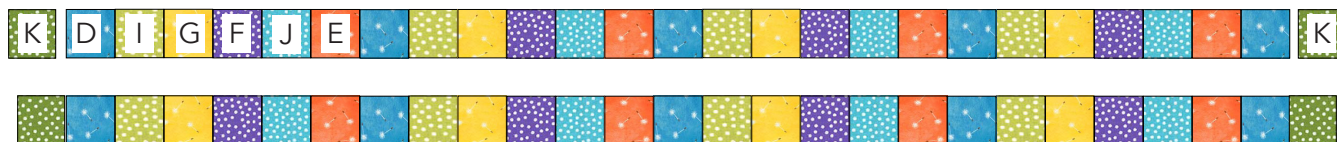
10. Sew (1) **C** 2-1/2" x 49" border to sides of quilt beginning and ending stitching at the corner of the seam allowance. In the same way, sew (1) **C** 2-1/2" x 40" border to top and bottom of the quilt. Sew the diagonal ends of the border together (see step 3).

11. Sew (1) **B** 3-1/2" x 49" border to sides of quilt. Sew (1) **B** 3-1/2" x 46-1/2" border to top and bottom of quilt.

12. Sew (5) **D**, (5) **I**, (5) **G**, (5) **F**, (5) **J** and (5) **E** 2-1/4" squares together in the order shown using slightly less than a 1/4" seam allowance so each side border measures 2-1/4" x 51-1/4" and the squares are all approximately the same width within the seam lines. Make 2.



13. Sew (5) **D**, (4) **I**, (4) **G**, (4) **F**, (4) **J** and (4) **E** 2-1/4" squares together in the order shown using slightly less than a 1/4" seam allowance so each border center measures 2-1/4" x 45" and the squares are all approximately the same width within the seam lines. Sew (1) **K** 2-1/4" square to ends to complete top and bottom border. Make 2.



Finishing: Layer quilt top, batting and backing together to form a quilt sandwich. Baste and quilt as desired. Bind using (6) 2-1/4" x 42" strips.

