

michael miller FABRICS

# Wilderness

SIZE: 68"Wx 84"H • LEVEL: Confident Beginner • PATTERN BY: Project House 360



teal



gray



yellow

**PLEASE NOTE:** THIS PATTERN HAS BEEN THROUGH OUR TECHNICAL EDITING PROCESS. *HOWEVER*, BEFORE BEGINNING YOUR PROJECT, CHECK FOR ANY PATTERN UPDATES AT [MICHAELMILLERFABRICS.COM](http://MICHAELMILLERFABRICS.COM) IN THE FREE DOWNLOAD SECTION.

THIS IS A DIGITAL REPRESENTATION OF THE QUILT TOP, FABRIC MAY VARY.

p.212.704.0774 | [info@michaelmillerfabrics.com](mailto:info@michaelmillerfabrics.com) | [www.michaelmillerfabrics.com](http://www.michaelmillerfabrics.com)



# Wilderness

NOTES: Swatches are not to scale, they are for identification purposes only. Fabric B is white on white dots.

## TEAL COLORWAY



FABRIC A  
CX8664 teal  
½ yard



FABRIC B  
CX2490 snowdrop  
1¼ yards



FABRIC C  
CM8661 starlight  
2½ yards



FABRIC D  
CX8665 ice blue  
½ yard



FABRIC E  
CX8664 spa  
¾ yard



FABRIC F  
CM8662 ice blue  
1½ yards



FABRIC G  
CX8664 black  
⅝ yard



FABRIC H  
CM8660 starlight  
4½ yards

## YELLOW COLORWAY



FABRIC A  
CX8664 clay  
½ yard



FABRIC B  
CX2490 snowdrop  
1¼ yards



FABRIC C  
CM8661 honey  
2½ yards



FABRIC D  
CX8665 honey  
½ yard



FABRIC E  
CX8664 brick  
¾ yard



FABRIC F  
CM8662 clay  
1½ yards



FABRIC G  
CX8664 black  
⅝ yard

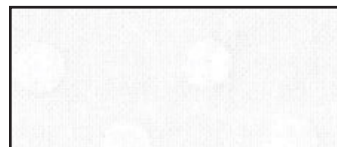


FABRIC H  
CM8660 honey  
4½ yards

## GRAY COLORWAY



FABRIC A  
CX8664 clay  
½ yard



FABRIC B  
CX2490 snowdrop  
1¼ yards



FABRIC C  
CM8661 ebony  
2½ yards



FABRIC D  
CX8665 honey  
½ yard



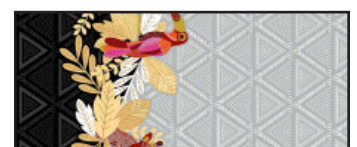
FABRIC E  
CX8664 brick  
¾ yard



FABRIC F  
CM8662 ice blue  
1½ yards



FABRIC G  
CX8664 black  
⅝ yard



FABRIC H  
CM8660 ebony  
4½ yards



# Wilderness

## 1/4" SEAM ALLOWANCE CHECK

Even if you use a 1/4" foot, your seam allowance may not be accurate!

To check if your seam is accurate, cut three 1 1/2" x 3" pieces from scrap fabric.

Sew the pieces together along the 3" side, using what you believe is a 1/4" seam.

Press away from the center piece.

Measure.

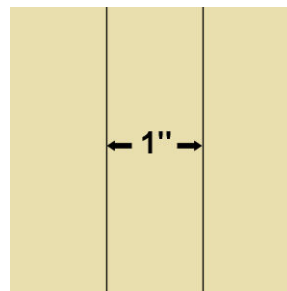
The center piece should be exactly 1" wide.

If, when you measure, the center is less than 1", your seam allowance is too large, so move the needle to the right.

If it's more than 1", your seam allowance is too small, so move your needle to the left.

Refer to your machine owner's manual for instructions on changing your needle position.

Repeat the test until your center strip measures exactly 1".



PLEASE READ THROUGH ENTIRE PATTERN BEFORE BEGINNING

KEY	CUTTING INSTRUCTIONS
A	(4) 2 7/8" x WOF (width of fabric) strips. Subcut: (48) 2 7/8" squares.
B	(14) 2 7/8" x WOF strips. Subcut: (192) 2 7/8" squares
C	(24) 5 1/4" squares, fussy cutting, centering racoon motif. (24) 5 1/4" squares, fussy cutting, centering fox motif.
D	(2) 5 1/4" x WOF strips. Subcut: (12) 5 1/4" squares.
E	(4) 2 7/8" x WOF strips. Subcut: (48) 2 7/8" squares. (2) 3" x WOF strips. Subcut: (20) 3" squares.
F	(3) 14 3/4" x WOF strips. Subcut: (31) 14 3/4" x 3" rectangles.
G	(7) 1 3/4" x WOF strips.
H	From LENGTH of fabric, centering motif, cut: (2) 6 1/2" x LOF (length of fabric). Subcut from each strip: (1) 6 1/2" x 72" and (1) 6 1/2" x 88". From remainder of fabric (center area) cut (3) 2 1/2" x LOF strips for binding.
	Backing: 5 1/4 yards      Batting: 76" x 92"

# Wilderness

## Blocks:

Make 12

1. Stitch two fabric B, one fabric A and one fabric E  $2\frac{7}{8}$ " squares together to make a four-patch unit. Square to  $5\frac{1}{4}$ ". Make 48 units.
2. Draw a diagonal line on two fabric B  $2\frac{7}{8}$ " squares. Add to one corner of one fabric C  $5\frac{1}{4}$ " square, stitching on the drawn line. Cut away excess, leaving a  $\frac{1}{4}$ " seam allowance. Press triangle outward. Repeat on the second corner as shown. Square to  $5\frac{1}{4}$ ". Make 24 fox units and 24 racoon units.
3. Combine the units from steps one and two, along with the fabric D  $5\frac{1}{4}$ " squares to complete the blocks. Square blocks to  $14\frac{3}{4}$ ". Make twelve blocks.

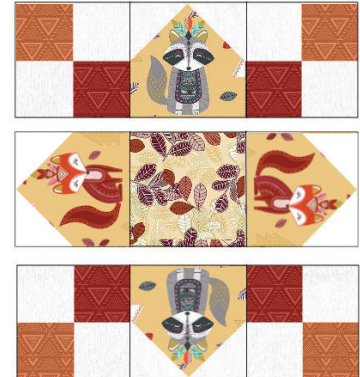
Step #1



Step #2



Step #3



## Assembly:

4. Use the assembly diagram on page 4 to assemble the quilt top, combining the blocks, fabric F  $3" \times 14\frac{3}{4}"$  rectangles and fabric E  $3"$  squares.
5. Stitch the fabric G  $1\frac{3}{4}"$  strips together, end to end. Cut (2)  $1\frac{3}{4}" \times 70"$  and add to the sides of the quilt. Cut (2)  $1\frac{3}{4}" \times 55\frac{3}{4}"$  and add to the top and bottom of the quilt.
6. Stitch the fabric H  $6\frac{1}{2}" \times 72"$  strips to the top and bottom of the quilt, preparing to miter corners.
7. Stitch the fabric H  $6\frac{1}{2}" \times 88"$  strips to the sides of the quilt, mitering corners.

## Finishing:

8. Layer, baste and quilt as desired.
9. Bind with three fabric H  $2\frac{1}{2}" \times \text{LOF}$  strips.



# Wilderness

## Assembly Diagram

