

michael miller FABRICS

CITY GARDEN

SIZE: 58"W x 75"H • LEVEL: BEGINNER • PATTERN BY: NATALIE CRABTREE • ALTELIER URBAN
PATTERN AVAILABLE ON: WWW.MICHAELMILLERFABRICS.COM



THIS IS A DIGITAL REPRESENTATION OF THE QUILT TOP, FABRIC MAY VARY.

PLEASE NOTE: BEFORE BEGINNING YOUR PROJECT, CHECK FOR ANY PATTERN UPDATES AT MICHAELMILLERFABRICS.COM'S FREE PROJECTS SECTION.

p.212.704.0774 | info@michaelmillerfabrics.com | www.michaelmillerfabrics.com



CITY GARDEN

**FABRIC A**

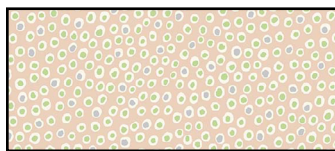
Cotton Couture
SC_5333 Dusk

1 1/4 Yards (includes binding)

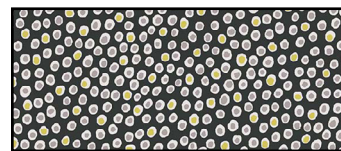
**FABRIC B**

Cotton Couture
SC_5333 Green Tea

1 1/8 yard

**FABRIC C**

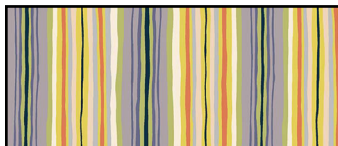
DC8789
Spotted Pink
3/4 yard

**FABRIC D**

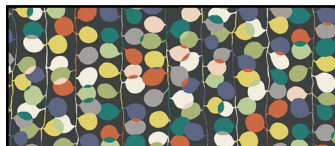
DC8789
Spotted Stone
1 1/8 yard

**FABRIC E**

DC8789
Spotted Orange
3/8 yard

**FABRIC F**

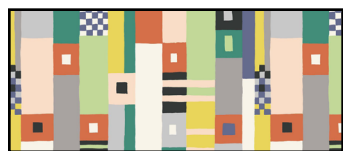
DC8790
Rhythms Gray
3/4 yard

**FABRIC G**

DC8687
Party Pumpkin
1/2 yard

**FABRIC H**

DC8685
Paper Fans Pewter
1/2 yard

**FABRIC I**

DC8683
Pallette Pumpkin
1/2 yard

**FABRIC J**

DC8684
Wind Flowers Olive
1/2 yard

**FABRIC K**

DC8686
Zing Black
3/8 yard



CITY GARDEN

Additional supplies needed:

Backing: 3 $\frac{3}{4}$ yards giving you 3" additional inches on each side

Batting: 64" x 81" piece of batting giving you 3 inches overage on each side

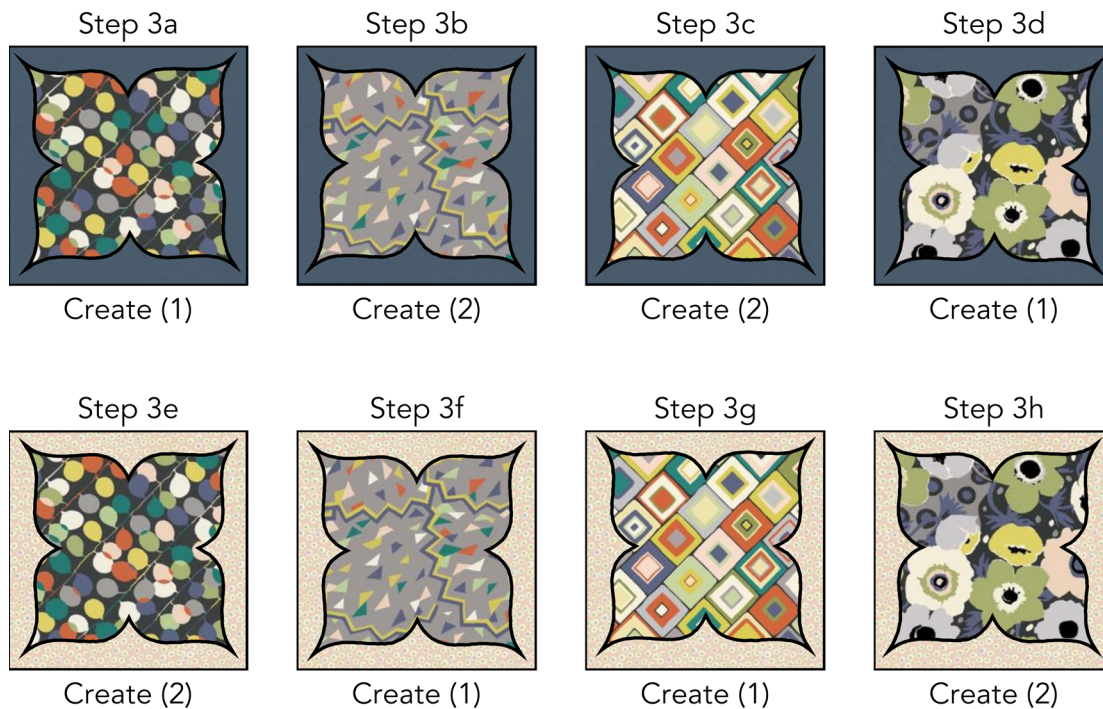
Basic Sewing Supplies, Fusible Web of your choice

(HST = Half Square Triangle, QST = Quarter Square Triangle)

KEY	CUTTING INSTRUCTIONS
Template	<p>(Pattern includes instructions for raw edge applique. Therefore, the printed size of the template is the finished size of the applique patch.)</p> <ul style="list-style-type: none"> • Template A is printed across (2) pages. Cut out each section of Template A. Align the black printed lines and tape together using household tape. Cut out Template B on the black line.
Fusible Web	<ul style="list-style-type: none"> • Trace (12) Template A onto the smooth side of fusible web. Cut out each template just outside of the traced line. Fabric instructions indicate which fabrics to fuse each template to. • Trace (6) Template B onto the smooth side of fusible web. Cut out each template just outside of the traced line. Fabric instructions indicate which fabrics to fuse each template to.
Fabric A	<ul style="list-style-type: none"> • Cut (8) 2 $\frac{1}{4}$" x WOF strips for binding. • Cut (2) 12 $\frac{1}{2}$" x WOF strips. Subcut (6) 12 $\frac{1}{2}$" squares.
Fabric B	<ul style="list-style-type: none"> • Cut (7) 1 $\frac{1}{2}$" x WOF strips for Border 1. • Cut (2) 12 $\frac{1}{2}$" x WOF strips. Subcut (6) 12 $\frac{1}{2}$" squares.
Fabric C	<ul style="list-style-type: none"> • Cut (2) 12 $\frac{1}{2}$" x WOF strips. Subcut (6) 12 $\frac{1}{2}$" squares.
Fabric D	<ul style="list-style-type: none"> • Cut (2) 18 $\frac{1}{4}$" x WOF strips. Subcut (3) 18 $\frac{1}{4}$" squares; cut each square twice diagonally to create (12) QST for setting triangles. (Two QST will be unused) • From the remainder of the second strip, subcut (2) 9 $\frac{1}{2}$" squares; cut each square once diagonally to create (4) HST for corner triangles.
Fabric E	<ul style="list-style-type: none"> • Use an iron to fuse (3) Template B onto the wrong side of fabric. Cut out each template on the traced line and set aside.
Fabric F	<ul style="list-style-type: none"> • Cut (10) 3" x LOF strips for Border 2. (LOF strips keep the striped fabric running perpendicular to the quilt top when completed.)
Fabric G	<ul style="list-style-type: none"> • Use an iron to fuse (3) Template A onto the wrong side of fabric. Cut out each template on the traced line and set aside.
Fabric H	<ul style="list-style-type: none"> • Use an iron to fuse (3) Template A onto the wrong side of fabric. Cut out each template on the traced line and set aside.
Fabric I	<ul style="list-style-type: none"> • Use an iron to fuse (3) Template A onto the wrong side of fabric. Cut out each template on the traced line and set aside.
Fabric J	<ul style="list-style-type: none"> • Use an iron to fuse (3) Template A onto the wrong side of fabric. Cut out each template on the traced line and set aside.
Fabric K	<ul style="list-style-type: none"> • Use an iron to fuse (3) Template B onto the wrong side of fabric. Cut out each template on the traced line and set aside.

Piecing Instructions

1. Peel the paper from the glue side of all fusible Template A pieces.
2. Center the Template A pieces onto the 12 ½" background fabric squares as shown.
3. Use an iron to fuse the fabric templates onto the right side of the 12 ½" background fabric squares. Use the following guide to pair fusible fabric templates with the correct 12 ½" square background fabric piece.
 - a. (1) Fabric A 12 ½" square + (1) Fabric G Template A
 - b. (2) Fabric A 12 ½" squares + (2) Fabric H Template A
 - c. (2) Fabric A 12 ½" squares + (2) Fabric I Template A
 - d. (1) Fabric A 12 ½" square + (1) Fabric J Template A
 - e. (2) Fabric C 12 ½" squares + (2) Fabric G Template A
 - f. (1) Fabric C 12 ½" square + (1) Fabric H Template A
 - g. (1) Fabric C 12 ½" square + (1) Fabric I Template A
 - h. (2) Fabric C 12 ½" squares + (2) Fabric J Template A

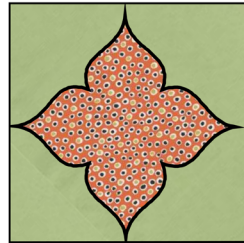


4. Peel the paper from the glue side of all fusible Template B pieces.
5. Center the Template B pieces onto the 12 ½" background fabric squares as shown. (Please note: Template B pieces are oriented differently on the background fabric squares than Template A. Ensure that they are oriented correctly before fusing.)
6. Use an iron to fuse the fabric templates onto the right side of the 12 ½" background fabric squares. Use the following guide to pair fusible fabric templates with the correct 12 ½" square background fabric piece.

CITY GARDEN

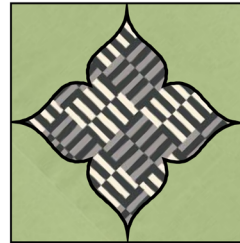
- a. (3) Fabric B 12 ½" squares + (3) Fabric E Template B
- b. (3) Fabric B 12 ½" squares + (3) Fabric K Template B

Step 6a



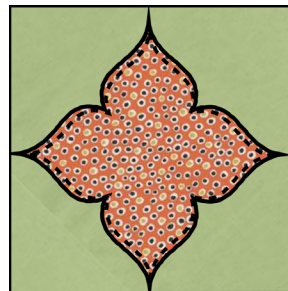
Create (3)

Step 6b



Create (3)

7. Using a decorative stitch and thread color of your choice, stitch around each applique template to secure it into place on the background fabric squares as shown.



8. Repeat stitching on all blocks using Templates A and B.
9. There should be a total of (12) blocks using Template A, and (6) Blocks using Template B. All blocks should measure 12 ½" x 12 ½" unfinished.

Quilt Assembly

10. The quilt is assembled using a diagonal setting. Lay out the blocks according to the quilt layout diagram. Use (10) Fabric C 18 ¼" QST for setting triangles around the perimeter of the quilt. Use (4) Fabric C 9 ½" HST for the corners of the quilt.
11. Once you have confirmed that the quilt layout is correct, sew the quilt together in diagonal rows, alternating the direction in which you press the seams in each row.

CITY GARDEN



12. Sew together the diagonal rows to complete the quilt top center.
13. Create Border 1 by sewing (7) Fabric B 1 ½" x WOF strips together end to end using a diagonal seam. Trim seams to ¼" and press.
14. From the long strip, trim (2) strips to 1 ½" x 68 ½" for the side borders. Trim (2) additional strips to 1 ½" x 53 ½" for the top/bottom borders.
15. Create Border 2 by sewing (10) Fabric F 3" x LOF strips together end to end using a straight ¼" seam.
16. From the long strip, trim (2) strips to 3" x 70 ½" for the side borders. Trim (2) additional strips to 3" x 58 ½" for the top/bottom borders.
17. Attach Border 1 to the quilt top center, sewing the side borders on first followed by the top/bottom borders. Press seams toward borders.
18. Attach Border 2 to the quilt top center, sewing the side borders on first followed by the top/bottom borders. Press seams toward borders.

CITY GARDEN



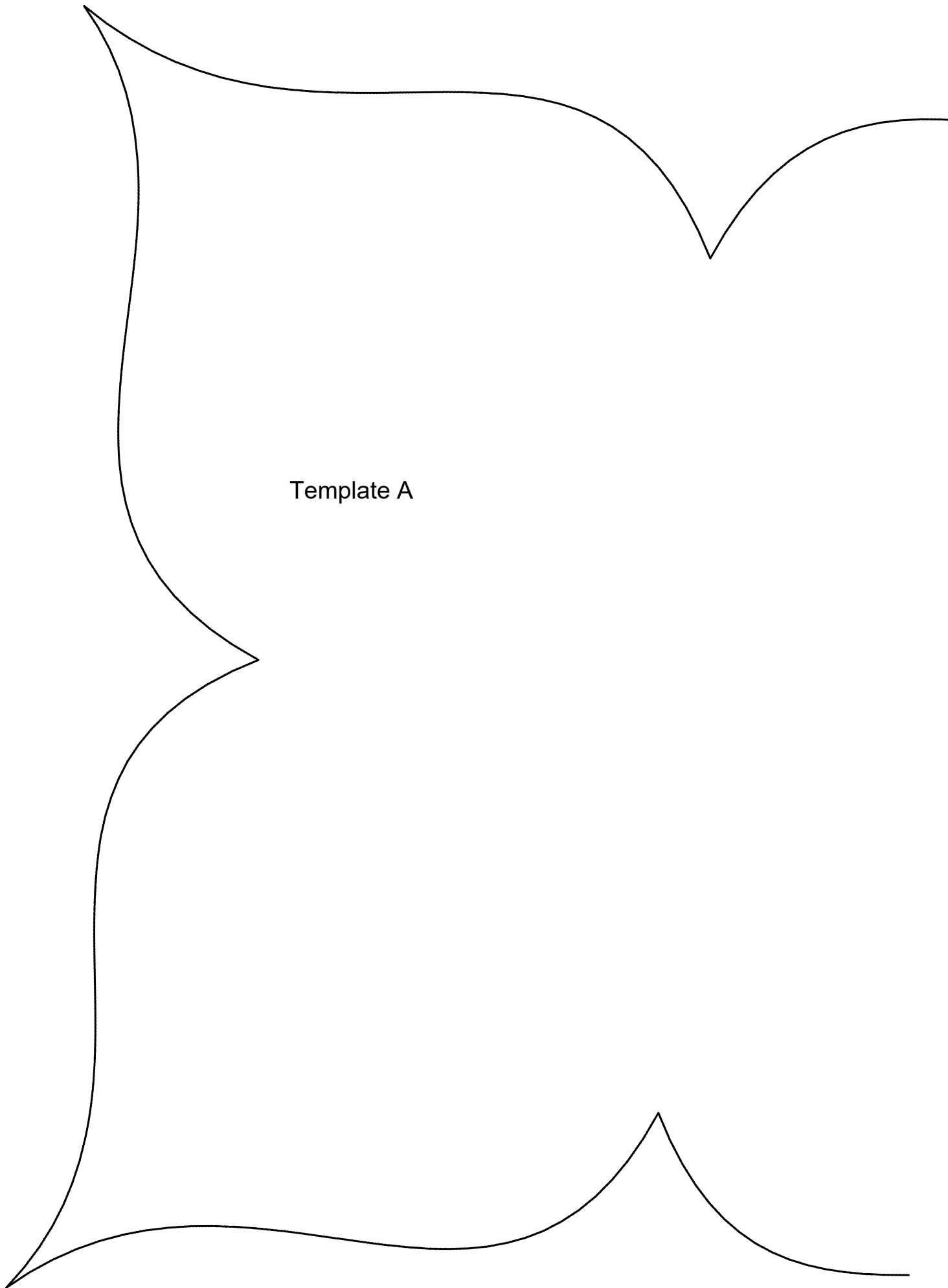
19. Sandwich quilt with batting and backing. Baste quilt layers together using your preferred method. Quilt as desired.
20. Create binding by sewing (8) Fabric B 2 1/4" x WOF strips together end to end using a diagonal seam. Trim seams to 1/4" and press open.
21. Use an iron to press the long strip in half widthwise with wrong sides together to create a long thin strip.
22. Attach binding using your preferred method.

City Garden Applique Templates by Natalie Crabtree

1 inch

Template B

(Templates are designed to be used for raw edge applique, therefore the printed template size is the finished size of the applique patch.)



Template A

Template A