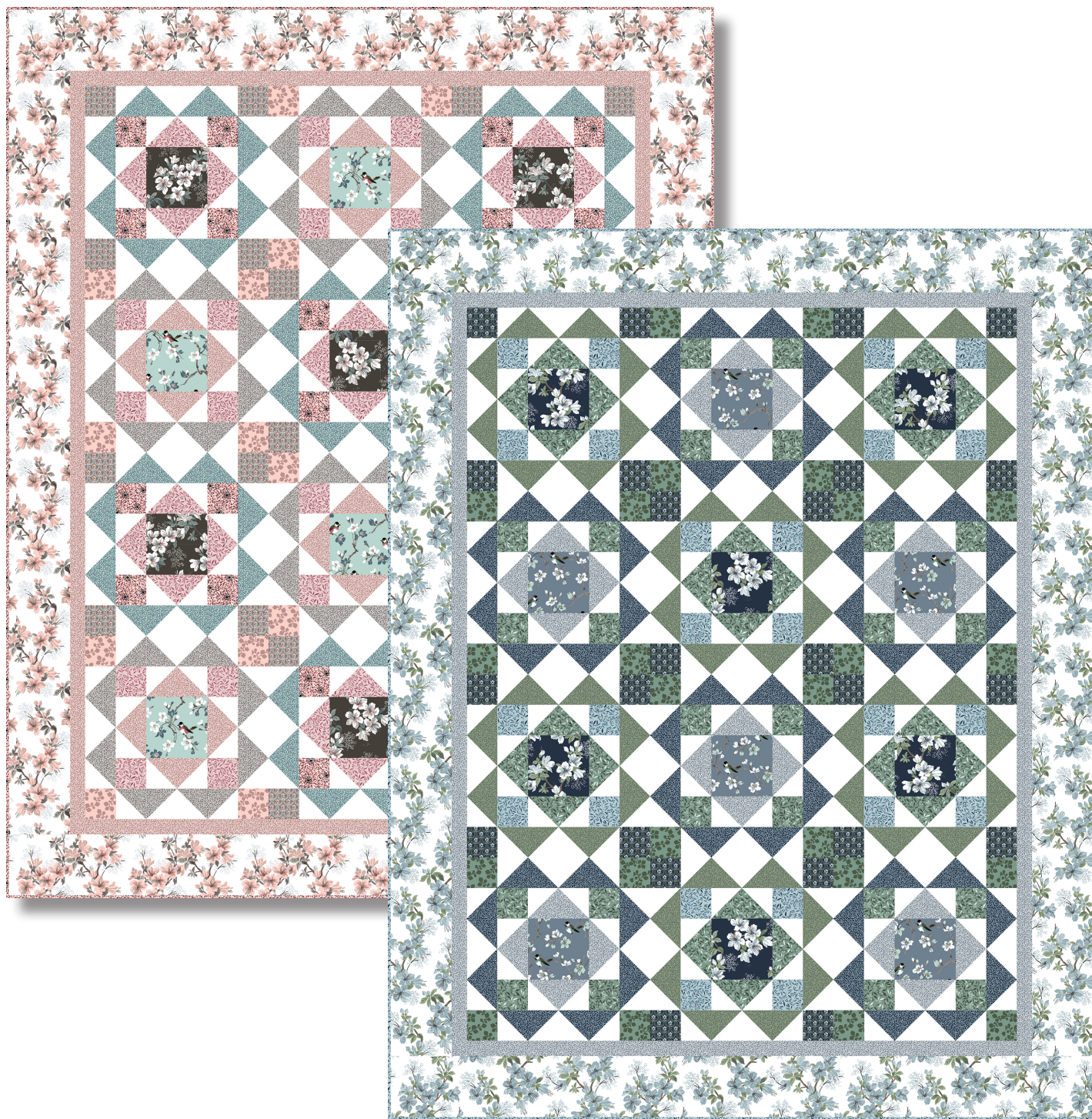


michael miller FABRICS

Jolene

SIZE: 69" x 87" • LEVEL: Advanced Beginner • PATTERN BY: Heidi Pridemore • La Florette Collection
PATTERN AVAILABLE ON: www.michaelmillerfabrics.com



THIS IS A DIGITAL REPRESENTATION OF THE QUILT TOP, FABRIC MAY VARY.

PLEASE NOTE: BEFORE BEGINNING YOUR PROJECT, CHECK FOR ANY PATTERN UPDATES AT MICHAELMILLERFABRICS.COM'S FREE PROJECTS SECTION.

p.212.704.0774 | info@michaelmillerfabrics.com | www.michaelmillerfabrics.com

Jolene

Blue Version



FABRIC A
CX8101-Navy
1/4 yard



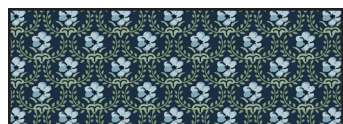
FABRIC B
CX8097-Green
3/4 yard



FABRIC C
CX8097-Aqua
7/8 yard



FABRIC D
CX8104-Green
7/8 yard



FABRIC E
CX8103-Navy
1/4 yard



FABRIC F
CX8696-Blue
1/4 yard



FABRIC G
CX8104-Blue
7/8 yards



FABRIC H
CX8697-Green
1/4 yard



FABRIC I
CX8104-Navy
7/8 yard



FABRIC J
SC5333-White
2-1/2 yards



FABRIC K
CX8101-Blue
1-5/8 yards

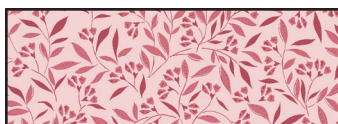


BACKING
CX8102-Blue
5-1/2 yards

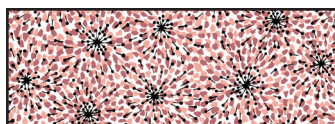
Pink Version



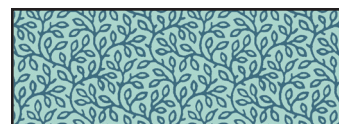
FABRIC A
CX8101-Dirt
1/4 yard



FABRIC B
CX8097-Pink
3/4 yard



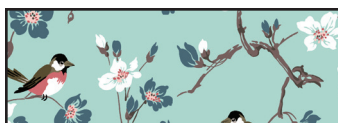
FABRIC C
CX8088-Pink
7/8 yard



FABRIC D
CX8104-Aqua
7/8 yard



FABRIC E
CX8103-Taupe
1/4 yard



FABRIC F
CX8696-Aqua
1/4 yard



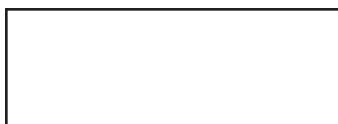
FABRIC G
CX8104-Pink
7/8 yards



FABRIC H
CX8697-Pink
1/4 yard



FABRIC I
CX8104-Taupe
7/8 yard



FABRIC J
SC5333-White
2-1/2 yards



FABRIC K
CX8101-White
1-5/8 yards



BACKING
CX8102-Dirt
5-1/2 yards



Jolene

| KEY | CUTTING INSTRUCTIONS |
|-------------|---|
| A | (1) 6-1/2" x WOF strip. Sub-cut (6) 6-1/2" squares. |
| B | (4) 3-1/2" x WOF strips. Sub-cut (24) 3-1/2" x 6-1/2" strips. (2) 3-1/2" x WOF strips. Sub-cut (24) 3-1/2" squares. |
| C | (2) 3-1/2" x WOF strips. Sub-cut (24) 3-1/2" squares. FOR BINDING: (8) 2-1/2" x WOF strips for the binding. |
| D | (8) 3-1/2" x WOF strips. Sub-cut (48) 3-1/2" x 6-1/2" strips. |
| E | (2) 3-1/2" x WOF strips. Sub-cut (24) 3-1/2" squares. |
| F | (1) 6-1/2" x WOF strip. Sub-cut (6) 6-1/2" squares. |
| G | (4) 3-1/2" x WOF strips. Sub-cut (24) 3-1/2" x 6-1/2" strips. (4) 2" x WOF strips. Sew the strips together end to end with diagonal seams and cut (2) 2" x 72-1/2" strips. (3) 2" x WOF strips. Sew the strips together end to end with diagonal seams and cut (2) 2" x 57-1/2" strips. |
| H | (2) 3-1/2" x WOF strips. Sub-cut (24) 3-1/2" squares. |
| I | (8) 3-1/2" x WOF strips. Sub-cut (48) 3-1/2" x 6-1/2" strips. |
| J | (24) 3-1/2" x WOF strips. Sub-cut (288) 3-1/2" squares. |
| K | (4) 6-1/2" x WOF strips. Sew the strips together end to end with diagonal seams and cut (2) 6-1/2" x 75-1/2" strips. (4) 6-1/2" x WOF strips. Sew the strips together end to end with diagonal seams and cut (2) 6-1/2" x 69-1/2" strips. |
| Back | (2) 95" x WOF strips. Piece the strips together and trim to make the 77" x 95" pieced backing. |
| | |

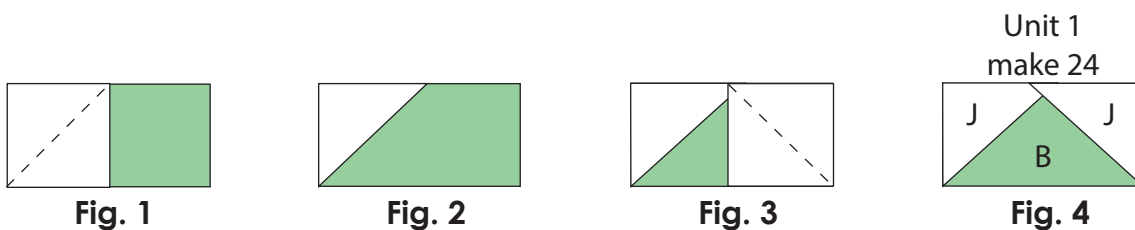
Block Assembly

Note: Pay attention to the unit orientations when assembling the various components.

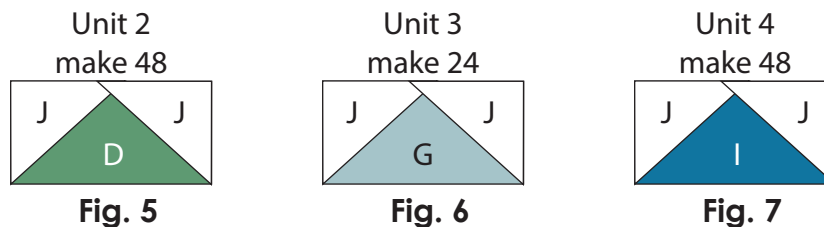
1. Place (1) 3-1/2" Fabric **J** square on the left side of (1) 3-1/2" x 6-1/2" Fabric **B** strip, right sides together (**Fig. 1**). Sew across the diagonal of the square from the upper right corner to the lower left corner (**Fig. 1**). Trim away the excess fabric from behind the triangle, leaving a 1/4" seam allowance. Flip open the triangle formed and press (**Fig. 2**).

2. Place another 3-1/2" Fabric **J** square on the right side of the 3-1/2" x 6-1/2" Fabric **B** strip, right sides together (**Fig. 3**). Sew across the diagonal of the square from the upper left corner to the lower right corner (**Fig. 3**). Trim away the excess fabric from behind the triangle, leaving a 1/4" seam allowance. Flip open the triangle formed and press to make (1) **Unit 1** strip (**Fig. 4**).

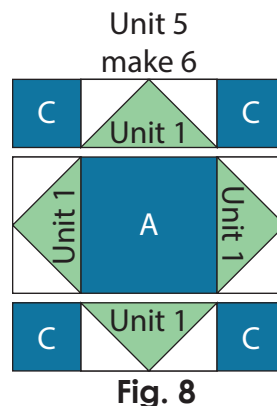
3. Repeat **Steps 1-2** to make (24) **Unit 1** strips total.



4. Repeat **Steps 1-2** and refer to **Figures 5-7** for fabric identification, placement and seam direction to make (48) **Unit 2** strips, (24) **Unit 3** strips and (48) **Unit 4** strips.



5. Sew (1) 3-1/2" Fabric **C** square to each end of (1) **Unit 1** strip to make the top row. Repeat to make the bottom row. Sew (1) **Unit 1** strip to each side of (1) 6-1/2" Fabric **A** square to make the middle row. Sew the (3) rows together to make (1) **Unit 5** square (**Fig. 8**). Repeat to make (6) **Unit 5** squares total.



6. Sew together (2) **Unit 2** strips, end to end, to make (1) **Side Strip**. Repeat to make (24) **Side Strips** total.

7. Sew (1) 3-1/2" Fabric **E** square to each end of (1) **Side Strip** to make the top row. Repeat to make the bottom row. Sew (1) **Side Strip** to each side of (1) **Unit 5** square to make the middle row. Sew the (3) rows together to make (1) **Block One** square (**Fig. 9**). Repeat to make (6) **Block One** squares total.

8. Repeat **Steps 5-7** and refer to **Figure 10** for component identification, placement and orientation to make (6) **Block Two** squares.

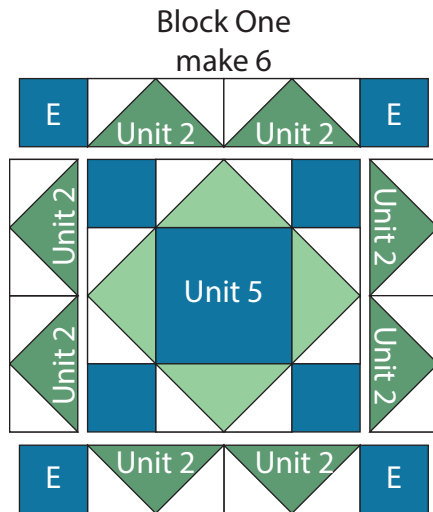


Fig. 9

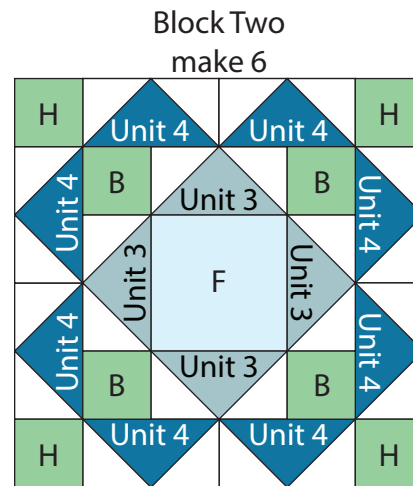


Fig. 10

Quilt Top Assembly:

(Refer to the Quilt Layout when assembling the quilt top.)

9. Sew (1) **Block One** square to each side of (1) **Block Two** square to make **Row One**. Repeat to make **Row Three**.

10. Sew (1) **Block Two** square to each side of (1) **Block One** square to make **Row Two**. Repeat to make **Row Four**.

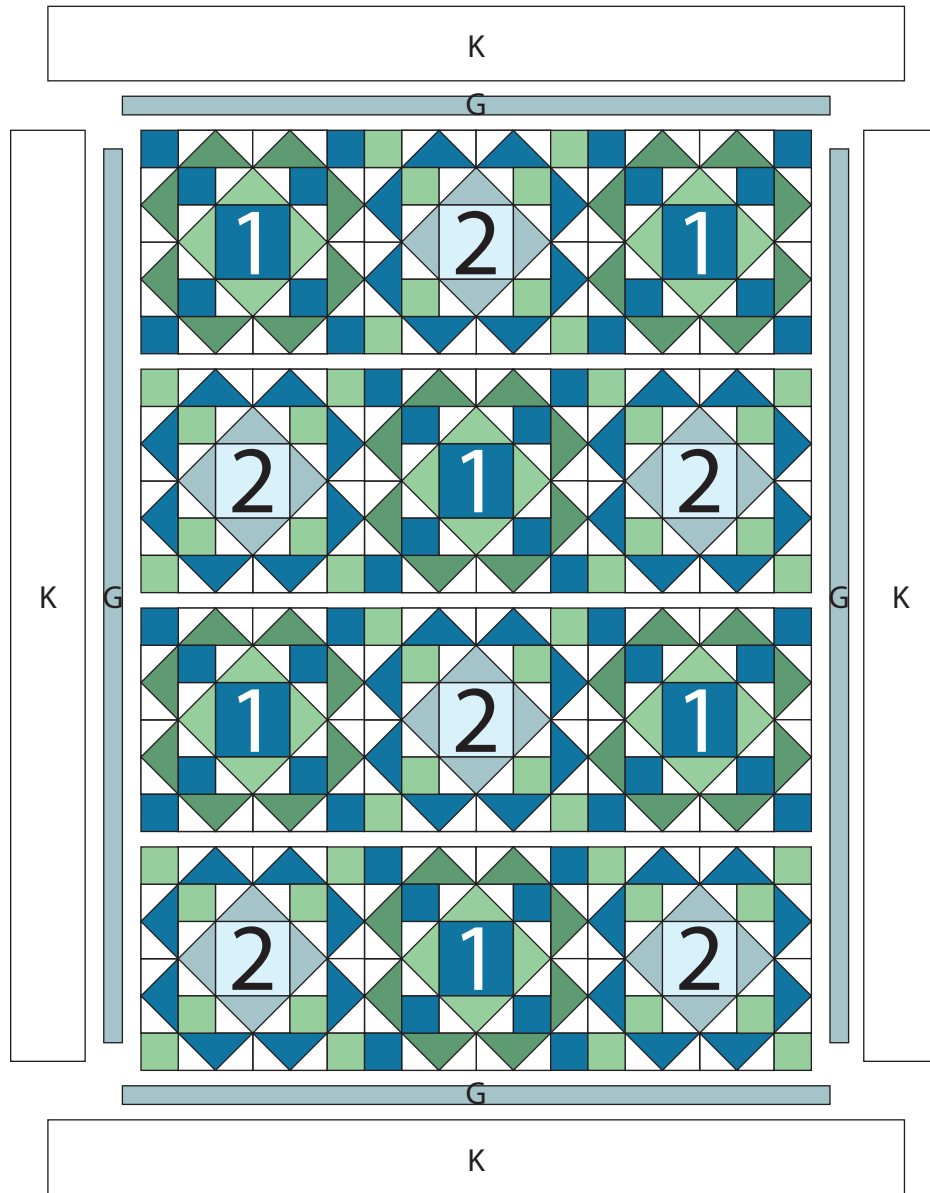
11. Sew the (4) **Rows** together to make the **Center Block**.

12. Sew (1) 2" x 72-1/2" Fabric **G** strip to each side of the **Center Block**. Sew (1) 2" x 57-1/2" Fabric **G** strip to the top and to the bottom of the **Center Block**.

13. Sew (1) 6-1/2" x 75-1/2" Fabric **K** strip to each side of the **Center Block**. Sew (1) 6-1/2" x 69-1/2" Fabric **K** strip to the top and to the bottom of the **Center Block** to make the quilt top.

FINISHING: Layer quilt top, batting and backing together to form quilt sandwich. Baste and quilt as desired. Bind using (8) Fabric **C** 2-1/2" strips.

Jolene



Quilt Layout