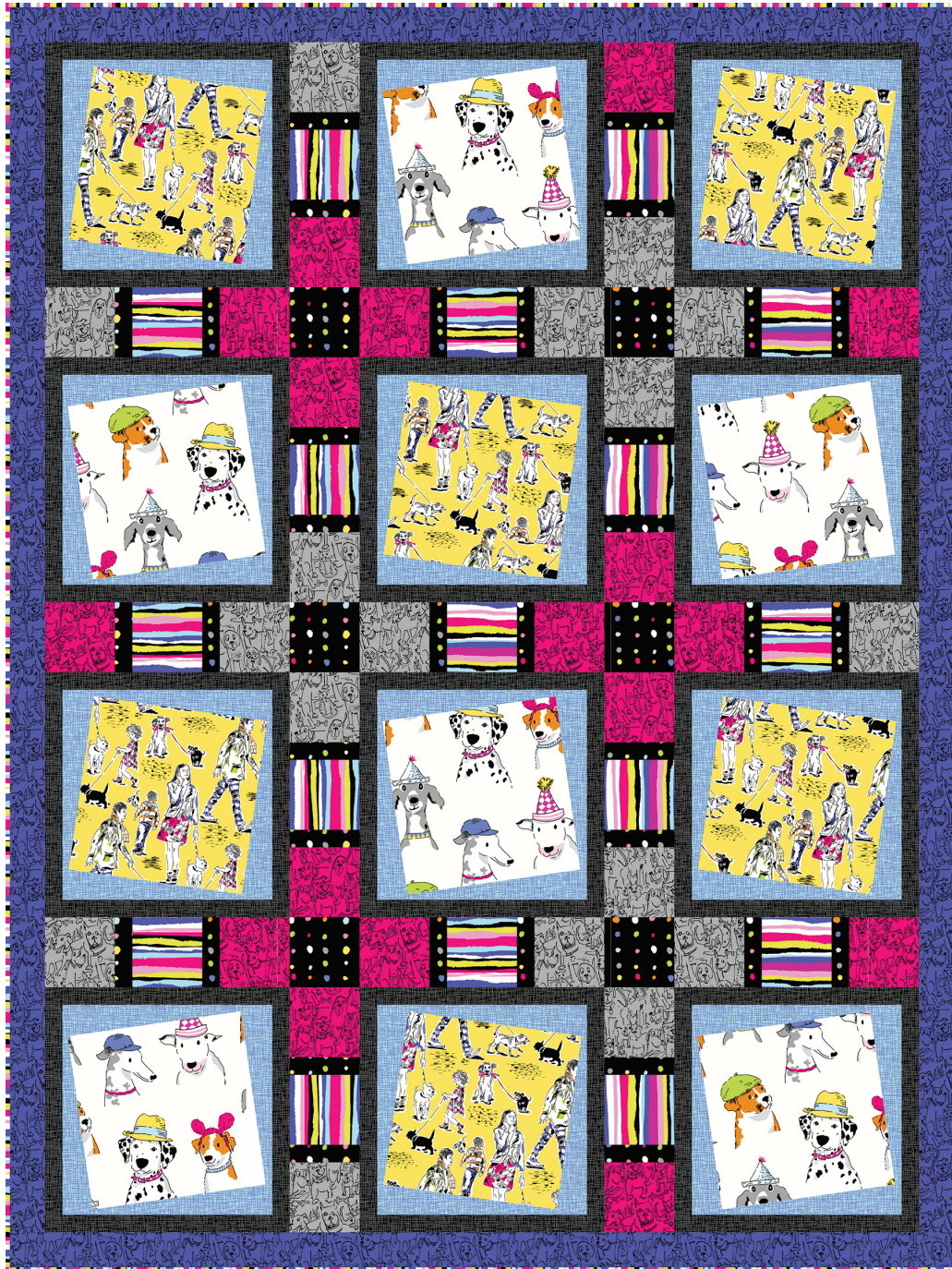


Dog Show

SIZE: 54" x 72" • LEVEL: Advanced Beginner • PATTERN BY: Heidi Pridemore • Dog Show Collection
PATTERN AVAILABLE ON:



THIS IS A DIGITAL REPRESENTATION OF THE QUILT TOP, FABRIC MAY VARY.

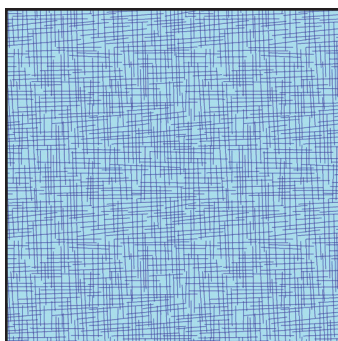
PLEASE NOTE: BEFORE BEGINNING YOUR PROJECT, CHECK FOR ANY PATTERN UPDATES AT MICHAELMILLERFABRICS.COM'S FREE PROJECTS SECTION.

p.212.704.0774 | info@michaelmillerfabrics.com | www.michaelmillerfabrics.com

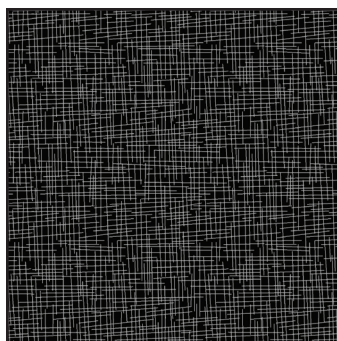
Dog Show



FABRIC A
CX8828-Yellow
3/4 yard



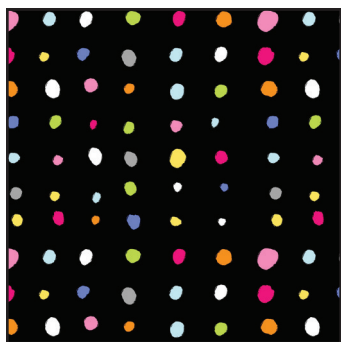
FABRIC B
CX8834-Blue
1-2/3 yards



FABRIC C
CX8834-Black
1 yard



FABRIC D
CX8829-White
3/4 yard



FABRIC E
CX8830-Black
3/8 yard



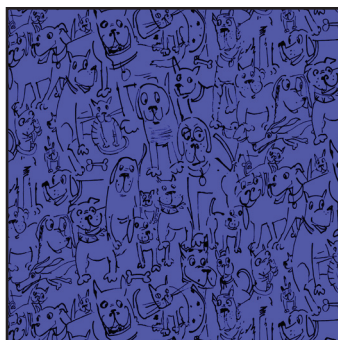
FABRIC F
CX8831-Red
3/8 yard



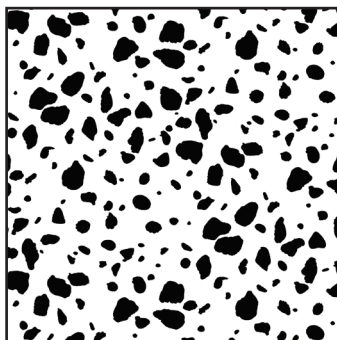
FABRIC G
CX8833-Multi
7/8 yards



FABRIC H
CX8831-Gray
3/8 yard



FABRIC I
CX8831-Cobalt
5/8 yard



BACKING
CX8835-White
3-1/2 yards



Dog Show

KEY	CUTTING INSTRUCTIONS
A	(2) 10-1/2" x Width of Fabric (WOF) strips. Sub-cut (6) 10-1/2" squares.
B	(6) 3" x WOF strips. Sub-cut (24) 3" x 10-1/2" strips. (12) 3" x WOF strips. Sub-cut (24) 3" x 15-1/2" strips.
C	(8) 1-1/2" x WOF strips. Sub-cut (24) 1-1/2" x 12-1/2" strips. (12) 1-1/2" x WOF strips. Sub-cut (24) 1-1/2" x 14-1/2" strips.
D	(2) 10-1/2" x WOF strips. Sub-cut (6) 10-1/2" squares.
E	(1) 4-1/2" x WOF strip. Sub-cut (6) 4-1/2" squares. (4) 1-1/2" x WOF strips. Sub-cut (34) 1-1/2" x 4-1/2" strips.
F	(2) 4-1/2" x WOF strips. Sub-cut (17) 4-1/2" squares.
G	(2) 4-1/2" x WOF strips. Sub-cut (17) 4-1/2" squares. FOR BINDING: (7) 2-1/2" x WOF strips.
H	(2) 4-1/2" x WOF strips. Sub-cut (17) 4-1/2" squares.
I	(2) 2-1/2" x 68-1/2" Length of Fabric (LOF) strips. (3) 2-1/2" x WOF strips. Sew the strips end to end with diagonal seams and cut (2) 2-1/2" x 54-1/2" strips.
Back	(2) 62" x WOF strips. Piece the strips together and trim to make the 62" x 80" pieced backing.

Dog Show

Block Assembly:

Note: The arrows in figures represent the fabric print direction. Pay attention to the fabric and unit orientations when assembling the various components.

1. Sew (1) 3" x 10-1/2" Fabric **B** strip to each side of (1) 10-1/2" Fabric **A** square. Sew (1) 3" x 15-1/2" Fabric **B** strip to the top and to the bottom of the Fabric **A** square to make (1) **Unit 1** square (**Fig. 1**). Repeat to make (6) **Unit 1** squares total.

2. Follow **Figure 2** and trim (1) **Unit 1** square as shown to measure 12-1/2" square to make (1) **Unit 2** square. Repeat to make (6) **Unit 2** squares total.

3. Sew (1) 1-1/2" x 12-1/2" Fabric **C** strip to each side of (1) **Unit 2** square. Sew (1) 1-1/2" x 14-1/2" Fabric **C** strip to the top and to the bottom of the **Unit 2** square to make (1) **Block One** square (**Fig. 3**). Repeat to make (6) **Block One** squares total.

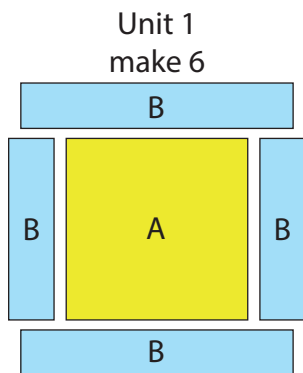


Fig. 1

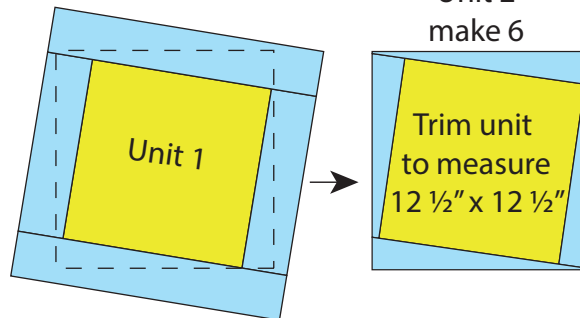


Fig. 2

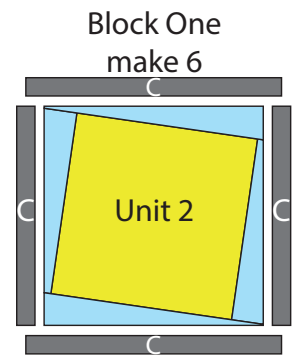


Fig. 3

4. Repeat **Steps 1-3** and refer to **Figures 4-6** for fabric identification, placement and orientation to make (6) **Block Two** squares.

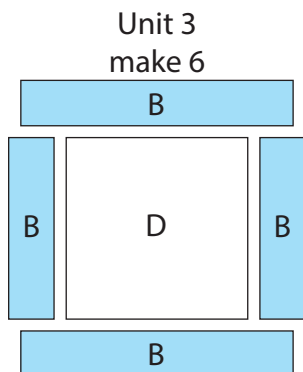


Fig. 4

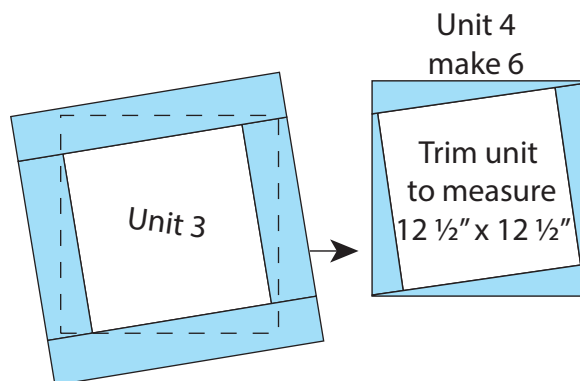


Fig. 5

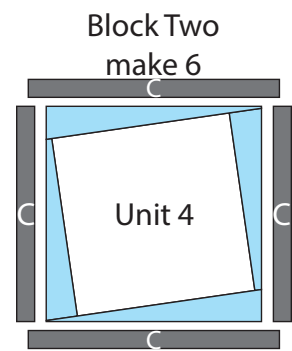


Fig. 6

Dog Show

5. Sew together (1) 4-1/2" Fabric **H** square, (1) 1-1/2" x 4-1/2" Fabric **E** strip, (1) 4-1/2" Fabric **G** square, (1) 1-1/2" x 4-1/2" Fabric **E** strip and (1) 4-1/2" Fabric **F** square, in that order, to make (1) **Unit 5** strip (**Fig. 7**). Repeat to make (4) **Unit 5** strips total.

Unit 5
make 4

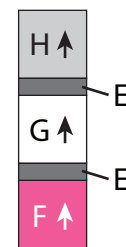


Fig. 7

Unit 6
make 4

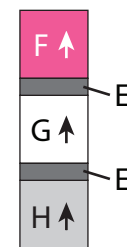


Fig. 8

6. Sew together (1) 4-1/2" Fabric **F** square, (1) 1-1/2" x 4-1/2" Fabric **E** strip, (1) 4-1/2" Fabric **G** square, (1) 1-1/2" x 4-1/2" Fabric **E** strip and (1) 4-1/2" Fabric **H** square, in that order, to make (1) **Unit 6** strip (**Fig. 8**). Repeat to make (4) **Unit 6** strips total.

7. Refer to **Figure 9** to sew (3) 4-1/2" Fabric **H** squares, (6) 1-1/2" x 4-1/2" Fabric **E** strips, (3) 4-1/2" Fabric **G** squares, (3) 4-1/2" Fabric **F** squares and (2) 4-1/2" Fabric **E** squares together to make (1) **Unit 7** strip. Repeat to make a second **Unit 7** strips total.

8. Refer to **Figure 10** to sew (3) 4-1/2" Fabric **F** squares, (6) 1-1/2" x 4-1/2" Fabric **E** strips, (3) 4-1/2" Fabric **G** squares, (3) 4-1/2" Fabric **H** squares and (2) 4-1/2" Fabric **E** squares together to make (1) **Unit 8** strip.

Unit 7
make 2

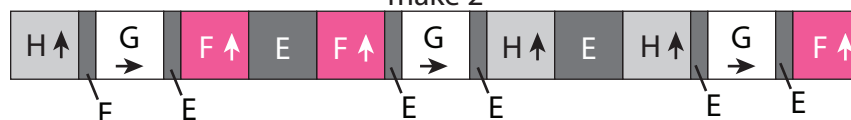


Fig. 9

Unit 8
make 1

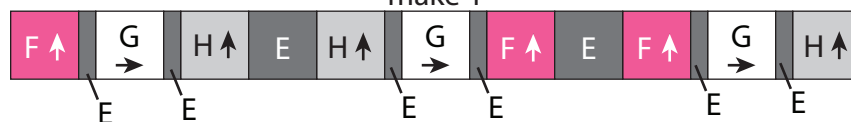


Fig. 10

Quilt Top Assembly:

(Refer to the Quilt Layout when assembling the quilt top.)

9. Sew (1) **Unit 5** strip to each side of (1) **Block Two** square. Sew (1) **Block One** square to each end of the newly sewn strip to make **Row One**. Repeat to make **Row Three**.

10. Sew (1) **Unit 5** strip to each side of (1) **Block One** square. Sew (1) **Block Two** square to each end of the newly sewn strip to make **Row Two**. Repeat to make **Row Four**.

11. Sew together the (4) pieced rows, in numerical order, and (3) **Unit 6** strips, alternating them, to make the **Center Block**.

12. Sew (1) 2-1/2" x 68-1/2" Fabric **I** strip to each side of the **Center Block**. Sew (1) 2-1/2" x 54-1/2" Fabric **I** strip to the top and to the bottom of the **Center Block** to make the quilt top.

FINISHING: Layer quilt top, batting and backing together to form quilt sandwich. Baste and quilt as desired. Bind using (7) Fabric **G** 2-1/2" strips.

Dog Show

