

michael miller FABRICS

# CAMPGROUND CRITTERS

SIZE: 70"W x 70"H • LEVEL: INTERMEDIATE • PATTERN BY: NATALIE CRABTREE • LIVING IN THE WILD FABRIC COLLECTION  
PATTERN AVAILABLE ON: [WWW.MICHAELMILLERFABRICS.COM](http://WWW.MICHAELMILLERFABRICS.COM)



THIS IS A DIGITAL REPRESENTATION OF THE QUILT TOP, FABRIC MAY VARY.

**PLEASE NOTE:** BEFORE BEGINNING YOUR PROJECT, CHECK FOR ANY PATTERN UPDATES AT [MICHAELMILLERFABRICS.COM](http://MICHAELMILLERFABRICS.COM)'S FREE PROJECTS SECTION.

p.212.704.0774 | [info@michaelmillerfabrics.com](mailto:info@michaelmillerfabrics.com) | [www.michaelmillerfabrics.com](http://www.michaelmillerfabrics.com)

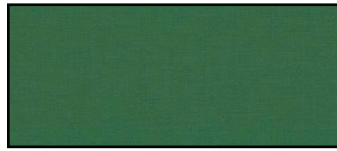




# CAMPGROUND CRITTERS



**FABRIC A**  
Cotton Couture  
SC5333 Moon  
1 ½ yards



**FABRIC B**  
Cotton Couture  
SC3333 Clover  
¼ yard OR (1) Fat  
Quarter



**FABRIC C**  
Cotton Couture  
SC5333 Cadet  
¼ yard OR (1) Fat  
Quarter



**FABRIC D**  
CM8661  
Happy Habitat Ice Blue  
5/8 yard



**FABRIC E**  
CM8662  
New Friends Spa  
3/8 yard



**FABRIC F**  
CM8660  
Living in the Wild Starlight  
3 ¾ yards



**FABRIC G**  
CM8665  
Leafing Together Honey  
¼ yard



**FABRIC H**  
CM8663  
Nature Stripe Starlight  
¼ yard



**FABRIC I**  
CX8664  
Triangle Geo Ice Blue  
1 ¼ yard



**FABRIC J**  
CX8664  
Triangle Geo Teal  
3/8 yard



**FABRIC K**  
CX8664  
Triangle Geo Black  
¼ yard



**FABRIC L**  
CX8664  
Triangle Geo Brick  
1 ¼ yard  
*(includes binding)*



**FABRIC M**  
CX8664  
Triangle Geo Spa  
½ yard



**FABRIC N**  
CX8664  
Triangle Geo Clay  
1/8 yard or (1) Fat 8th



**FABRIC O**  
CX8664  
Triangle Geo Honey  
1/8 yard or (1) Fat 8th



# CAMPGROUND CRITTERS

## Additional supplies needed:

Backing: 4 3/8 yards giving you 3" additional inches on each side

Batting: 76" x 76" piece of batting giving you 3 inches overage on each side

Basic Sewing Supplies, Fusible Web of your choice for Applique

(WOF = Width of Fabric, HST = Half Square Triangle, QST = Quarter Square Triangle)

KEY	CUTTING INSTRUCTIONS
<b>Fusible Web</b>	<ul style="list-style-type: none"> <li>• Cut out each template (<i>Moon, Star, Tent Flaps 1 &amp; 2, Tent Opening, Tent Front and Tent Side</i>) on the printed black line from the template pages.</li> <li>• On the paper side of fusible web, turn each template upside down so that the printed side of the template is touching the paper side of fusible web. The blank side of the template should be facing up. With wrong side of template down, trace: <ul style="list-style-type: none"> <li>○ (2) Stars</li> <li>○ (1) Moon</li> <li>○ (1) Tent Flap 1</li> <li>○ (1) Tent Flap 2</li> <li>○ (1) Tent Opening</li> <li>○ (1) Tent Front</li> <li>○ (1) Tent Side</li> </ul> </li> <li>• Roughly cut out each template so that there is room around the traced lines for trimming. (<i>Fabric cutting instructions indicate which templates to fuse to each fabric.</i>)</li> </ul>
<b>Fabric A</b>	<ul style="list-style-type: none"> <li>• Cut (4) 1 1/2" x WOF strips. Subcut: <ul style="list-style-type: none"> <li>○ (2) 1 1/2" x 12 1/2" strips</li> <li>○ (2) 1 1/2" x 14 1/2" strips</li> <li>○ (2) 1 1/2" x 19 1/2" strips</li> <li>○ (2) 1 1/2" x 21 1/2" strips</li> </ul> </li> <li>• Cut (4) 1 1/2" x WOF strips. Subcut: <ul style="list-style-type: none"> <li>○ (2) 1 1/2" x 35 1/2" strips</li> <li>○ (2) 1 1/2" x 37 1/2" strips</li> </ul> </li> <li>• Cut (5) 1 3/4" x WOF strips. (<i>Leave (3) strips whole for piecing instructions</i>) Subcut: <ul style="list-style-type: none"> <li>○ (2) 1 3/4" x 41 1/2"</li> </ul> </li> <li>• Cut (2) 6 1/4" x WOF strips. Subcut (56) 6 1/4" x 1 1/4" strips for Blocks A and B.</li> <li>• Cut (1) 7 3/4" x WOF strip. Subcut (28) 7 3/4" x 1 1/4" strips for Block A.</li> <li>• Cut (1) 4 3/4" x WOF strip. Subcut (28) 4 3/4" x 1 1/4" strips for Block B.</li> </ul>
<b>Fabric B</b>	<ul style="list-style-type: none"> <li>• Cut (1) 5 1/2" x 12 1/2" piece for the applique block.</li> </ul>
<b>Fabric C</b>	<ul style="list-style-type: none"> <li>• Cut (1) 7 1/2" x 12 1/2" piece for the applique block.</li> </ul>
<b>Fabric D</b>	<ul style="list-style-type: none"> <li>• Cut (3) 6 1/4" x WOF strips. Subcut (14) 6 1/4" squares for Block A.</li> </ul>
<b>Fabric E</b>	<ul style="list-style-type: none"> <li>• Cut (2) 4 3/4" x WOF strips. Subcut (14) 4 3/4" squares for Block B.</li> </ul>
<b>Fabric F</b>	<ul style="list-style-type: none"> <li>• Using both sides of the border print printed near the selvage, cut (2) 6 1/2" x 58 1/2" strips and (2) 6 1/2" x 70 1/2" strips for Border 7.</li> </ul>



# CAMPGROUND CRITTERS

<b>Fabric G</b>	<ul style="list-style-type: none"> <li>• Cut (1) 2" x WOF strip. Subcut (18) 2" squares for Leaf Blocks.</li> <li>• Cut (1) 2 ½" x WOF strip. Subcut (12) 2 ½" squares for Leaf Blocks.</li> <li>• Cut (1) 1" x WOF strip. Subcut (6) 1" x 3" rectangles for Leaf Blocks.</li> </ul>
<b>Fabric H</b>	<ul style="list-style-type: none"> <li>• Cut (2) 3" x WOF strip. Subcut: <ul style="list-style-type: none"> <li>○ (2) 3" x 19 ½" strips</li> <li>○ (2) 3" x 14 ½" strips</li> </ul> </li> </ul>
<b>Fabric I</b>	<ul style="list-style-type: none"> <li>• Cut (2) 2" x WOF strip. Subcut (12) 2" squares for Leaf Blocks.</li> <li>• Cut (2) 2 ½" x WOF strips. Subcut (24) 2 ½" squares; draw a diagonal line from corner to corner on the wrong side of each square for Leaf Blocks.</li> <li>• Cut (1) 2 ½" x WOF strip. Subcut (12) 2 ½" squares; cut each square once diagonally to create (24) HST for Leaf Blocks.</li> <li>• Cut (1) 9" x WOF strip. Subcut (4) 9" squares; cut each square twice diagonally to create (16) QST for Leaf Blocks.</li> <li>• Cut (2) 5" x WOF strips. Subcut (8) 5" squares; cut each square once diagonally to create (16) HST for Leaf Blocks.</li> <li>• Cut (1) 4 ¾" x WOF strip. Subcut (4) 4 ¾" squares; cut each square twice diagonally to create (16) QST for X Blocks.</li> <li>• Cut (1) 2 ¾" x WOF strip. Subcut (8) 2 ¾" squares; cut each square once diagonally to create (16) HST for X Blocks.</li> <li>• With remaining yardage, use an iron to fuse (1) Moon Template onto the wrong side of fabric. Cut the template out on the traced line and set aside.</li> </ul>
<b>Fabric J</b>	<ul style="list-style-type: none"> <li>• Cut (2) 3" x WOF strips. Subcut: <ul style="list-style-type: none"> <li>○ (4) 3" squares for X Blocks.</li> <li>○ (16) 1 ¾" x 3" rectangles for X Blocks.</li> </ul> </li> <li>• With remaining yardage, use an iron to fuse (1) Tent Side onto the wrong side of fabric. Cut the template out on the traced line and set aside.</li> </ul>
<b>Fabric K</b>	<ul style="list-style-type: none"> <li>• Cut (1) 3" x WOF strip. Subcut (16) 3" x 1 ¾" rectangles for X Blocks.</li> <li>• With remaining yardage, use an iron to fuse (1) Tent Opening onto the wrong side of fabric. Cut the template out on the traced line and set aside.</li> </ul>
<b>Fabric L</b>	<ul style="list-style-type: none"> <li>• Cut (1) 2" x WOF strip. Subcut (18) 2" squares for Leaf Blocks.</li> <li>• Cut (1) 2 ½" x WOF strip. Subcut (12) 2 ½" squares for Leaf Blocks.</li> <li>• Cut (1) 1" x WOF strip. Subcut (6) 1" x 3" rectangles for Leaf Blocks.</li> <li>• Cut (1) 6 ¼" x WOF strip. Subcut (28) 6 ¼" x 1 ¼" strips for Block B.</li> <li>• Cut (1) 7 ¾" x WOF strip. Subcut (28) 7 ¾" x 1 ¼" strips for Block B.</li> <li>• Cut (8) 2 ¼" x WOF strips for binding.</li> </ul>
<b>Fabric M</b>	<ul style="list-style-type: none"> <li>• Cut (4) 2 ½" x WOF strips. Subcut: <ul style="list-style-type: none"> <li>○ (2) 2 ½" x 37 ½" strips</li> <li>○ (2) 2 ½" x 41 ½" strips</li> </ul> </li> <li>• With remaining yardage, use an iron to fuse (1) Tent Front onto the wrong side of fabric. Cut the template out on the traced line and set aside.</li> </ul>



# CAMPGROUND CRITTERS

<b>Fabric N</b>	<ul style="list-style-type: none"> <li>From yardage, use an iron to fuse Tent Flaps 1 &amp; 2 onto the wrong side of fabric. Cut the templates out on the traced line and set aside.</li> </ul>
<b>Fabric O</b>	<ul style="list-style-type: none"> <li>From yardage, use an iron to fuse (2) Star Templates onto the wrong side of fabric. Cut the templates out on the traced line and set aside.</li> </ul>

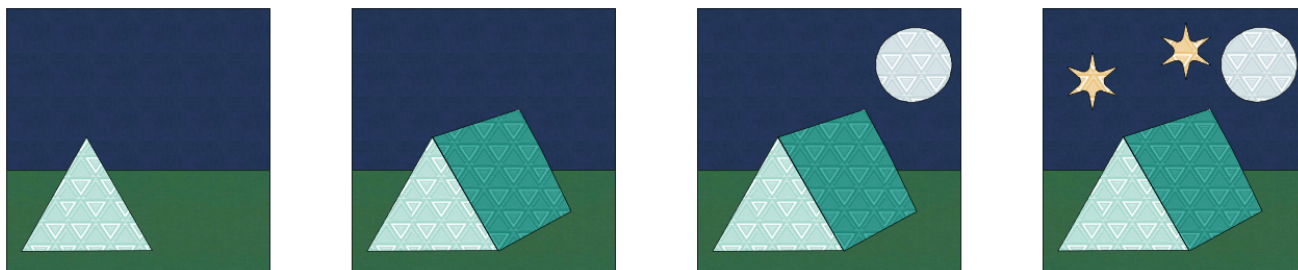
## Piecing Instructions

### Applique Block

1. Sew the longest edges of (1) Fabric B 5 ½" x 12 ½" rectangle and (1) Fabric C 7 ½" x 12 ½" rectangle using a ¼" seam as shown to create the applique block background.



2. Begin placing applique templates onto the applique block background as shown in the diagram. Place the Moon, Stars, Tent Front and Tent Side first.
3. Once you are satisfied with the placement, remove the paper from the glue side of the templates and fuse into place.

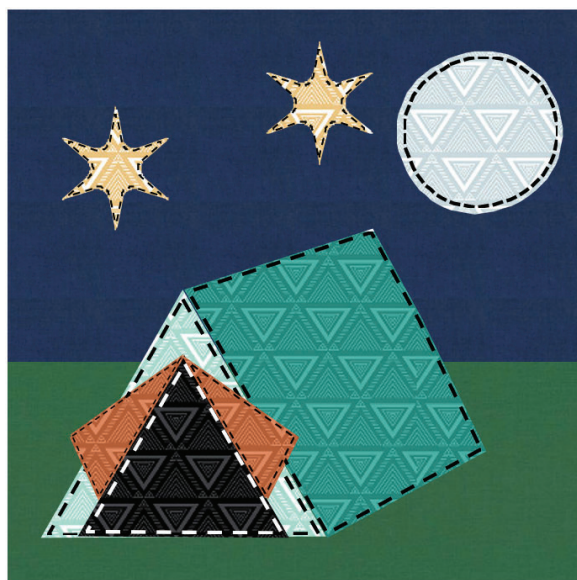


4. Layer the Tent Flaps 1 & 2 and Tent Openings onto the other fused applique as shown.
5. Once you are satisfied with the placement, remove the paper from the glue side of the remaining templates and fuse into place.



6. Using a thread color and decorative stitch of your choice, stitch around each individual applique template to secure them into place.

# CAMPGROUND CRITTERS



7. Once the applique process is complete, begin sewing (3) borders onto the applique block. All borders will be completed by sewing the side borders on first, followed by the top/bottom border. Press all seams toward the borders. Sew borders on in the following order using diagrams for reference:

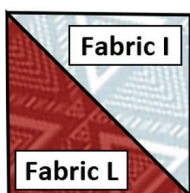
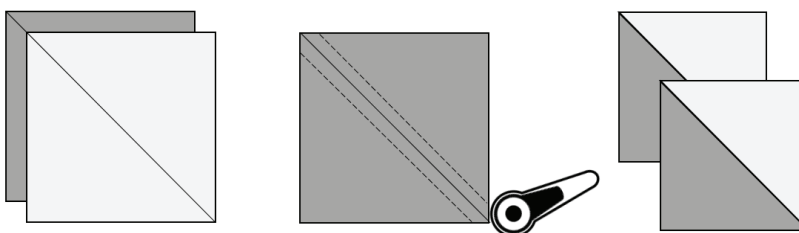
- a. (2) Fabric A 1 ½" x 12 ½"
- b. (2) Fabric A 1 ½" x 14 ½"
- c. (2) Fabric H 3" x 14 ½"
- d. (2) Fabric H 3" x 19 ½"
- e. (2) Fabric A 1 ½" x 19 ½"
- f. (2) Fabric A 1 ½" x 21 ½"



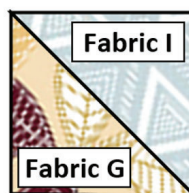
8. Begin Leaf Block assembly by making HST units.
9. Layer (1) 2 ½" square from Fabrics I and L right sides together and edges aligned. Fabric I should be facing upward with the drawn diagonal line present. Sew a ¼" away from each side of the drawn diagonal line.
10. Use a rotary cutter to cut along the drawn line, separating the two sides and creating (2) HST units.
11. Trim HST units to 2" unfinished. Press.
12. Use the following color guide and diagrams to create the correct amount of HST units in (2) colorways:
- a. Create (24) HST units using (12) 2 ½" squares from Fabrics L and I.
  - b. Create (24) HST units using (12) 2 ½" squares from Fabrics G and I.



# CAMPGROUND CRITTERS

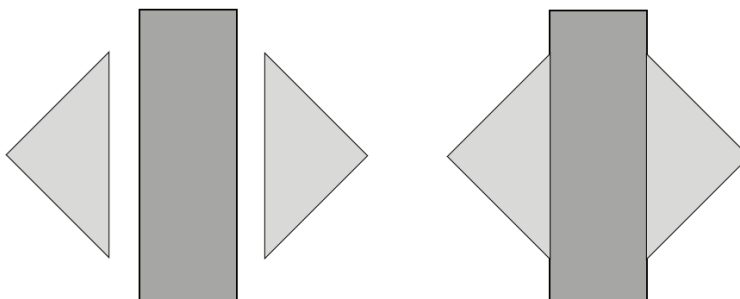


Create (24) Units

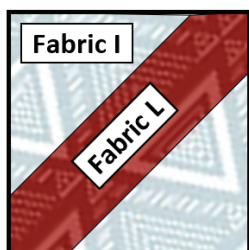


Create (24) Units

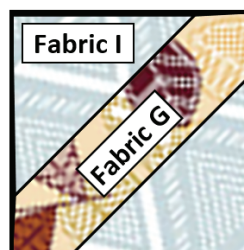
13. Create the leaf stem by sewing (1) Fabric I 2 ½" HST onto either side of (1) Fabric L 1" x 3" rectangle as shown. *(Units are cut oversized to allow for trimming.)*
14. Press seams outward toward Fabric I. Trim unit to measure 2" x 2" unfinished.



15. Repeat to create (6) leaf stems using Fabrics I and L. Repeat to create (6) leaf stems using Fabrics I and J.



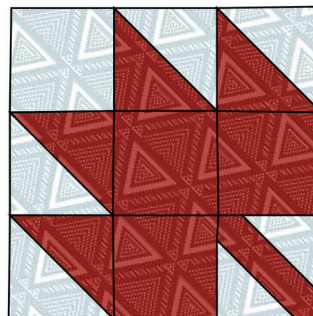
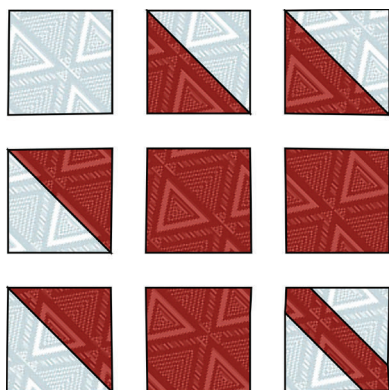
Create (6) Units



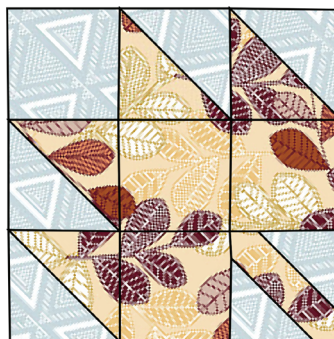
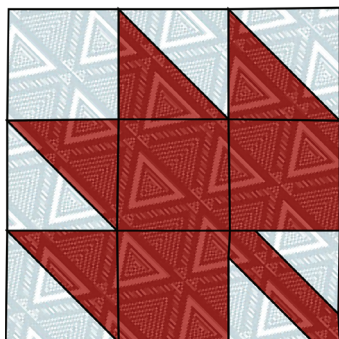
Create (6) Units

16. Complete Leaf Blocks using (1) Fabric I 2" square, (3) 2" squares from the matching colorway fabric, (1) leaf stem and (4) HST units. Use the diagrams for accurate fabric and unit placement.

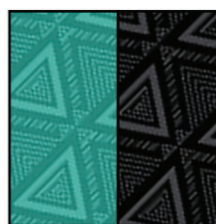
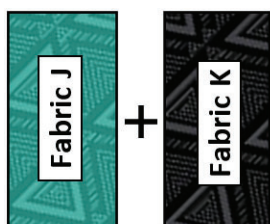
# CAMPGROUND CRITTERS



17. Repeat to create (6) Leaf Blocks using Fabrics I and L, and (6) Leaf Blocks using Fabrics G and I.
18. Trim Leaf Blocks to measure 5" x 5" unfinished.



19. Begin X Block assembly by sewing the longest edges of (1) 1 3/4" x 3" rectangle from Fabrics J and K together using a 1/4" seam.
20. Repeat (16) times to create (16) 3" x 3" unfinished units.

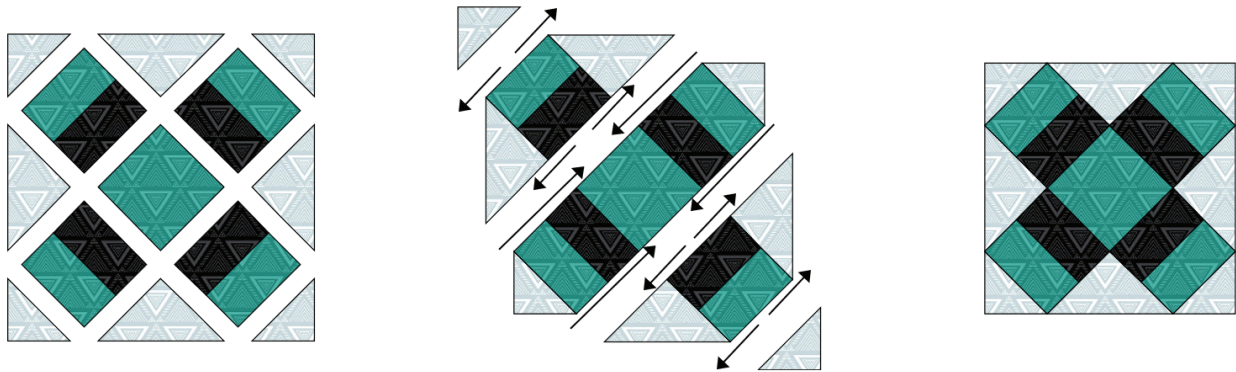


**Create (16) Units**

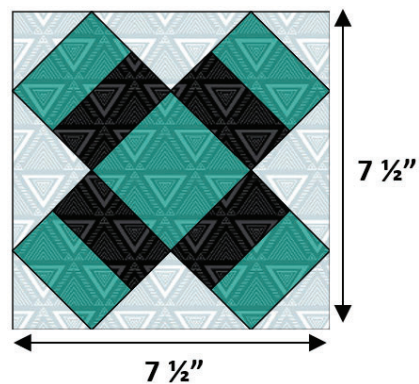
21. Using (4) units created in Steps 19-20, (1) Fabric J 3" square, (4) Fabric I 4 3/4" QST and (4) Fabric I 2 3/4" HST lay out the X Block as shown. Fabric I 4 3/4" QST will act as setting triangles along the perimeter of the quilt block creating a straight edge. Fabric I 2 3/4" HST will act as the corners of the block.
22. Once you have confirmed that the layout is correct, please together the X Block using diagrams. Diagrams indicate pressing directions.



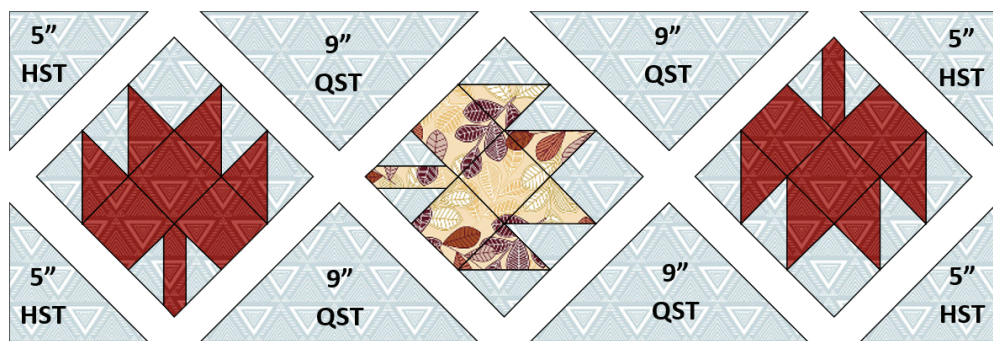
# CAMPGROUND CRITTERS



23. Repeat to create (4) X Blocks. X Blocks should measure  $7\frac{1}{2}'' \times 7\frac{1}{2}''$  unfinished.



24. Using diagrams for color and fabric placement, use (3) Leaf Blocks, (4) Fabric I 9" QST and (4) Fabric I 5" HST to create a Leaf Row. Fabric I 9" QST will act as the setting triangles along the perimeter of the block row creating a straight edge. Fabric I 5" HST will act as the corners of the block. (Please note: Fabric I triangles are cut large to allow for trimming. Trimming instructions are listed in the following steps.)



25. Begin piecing together the Leaf Rows as shown in the diagram. Each of the (4) Leaf Block Rows are unique and therefore are labeled as Leaf Row Top, Leaf Row Bottom, Leaf Row Left and Leaf Row Right. See diagrams for accurate block and fabric placement.

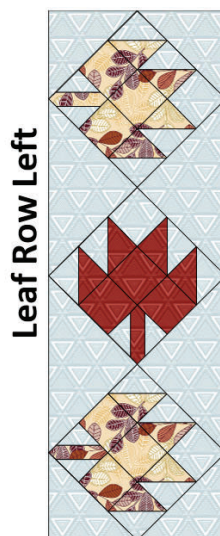
# CAMPGROUND CRITTERS



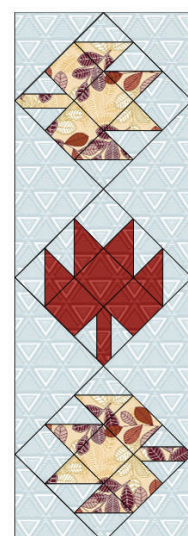
**Leaf Row Top**



**Leaf Row Bottom**



**Leaf Row Left**

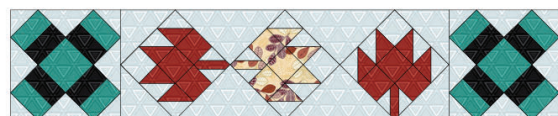
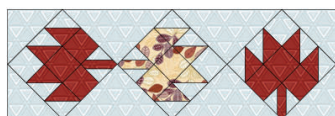


**Leaf Row Right**

26. Leaf Rows are oversized to allow for trimming. Trim all Leaf Rows to measure 7 ½" x 21 ½" unfinished.
27. Sew (1) X Block onto both ends of Leaf Rows Top and Bottom as shown. Press seams toward the X Blocks.



**Leaf Row Top**



**Leaf Row Bottom**

28. Sew Leaf Rows Left and Right onto the quilt top center as shown. Press seams toward the quilt top center.
29. Sew Leaf Rows Top and Bottom onto the quilt top center as shown. Press seams toward the quilt top center.

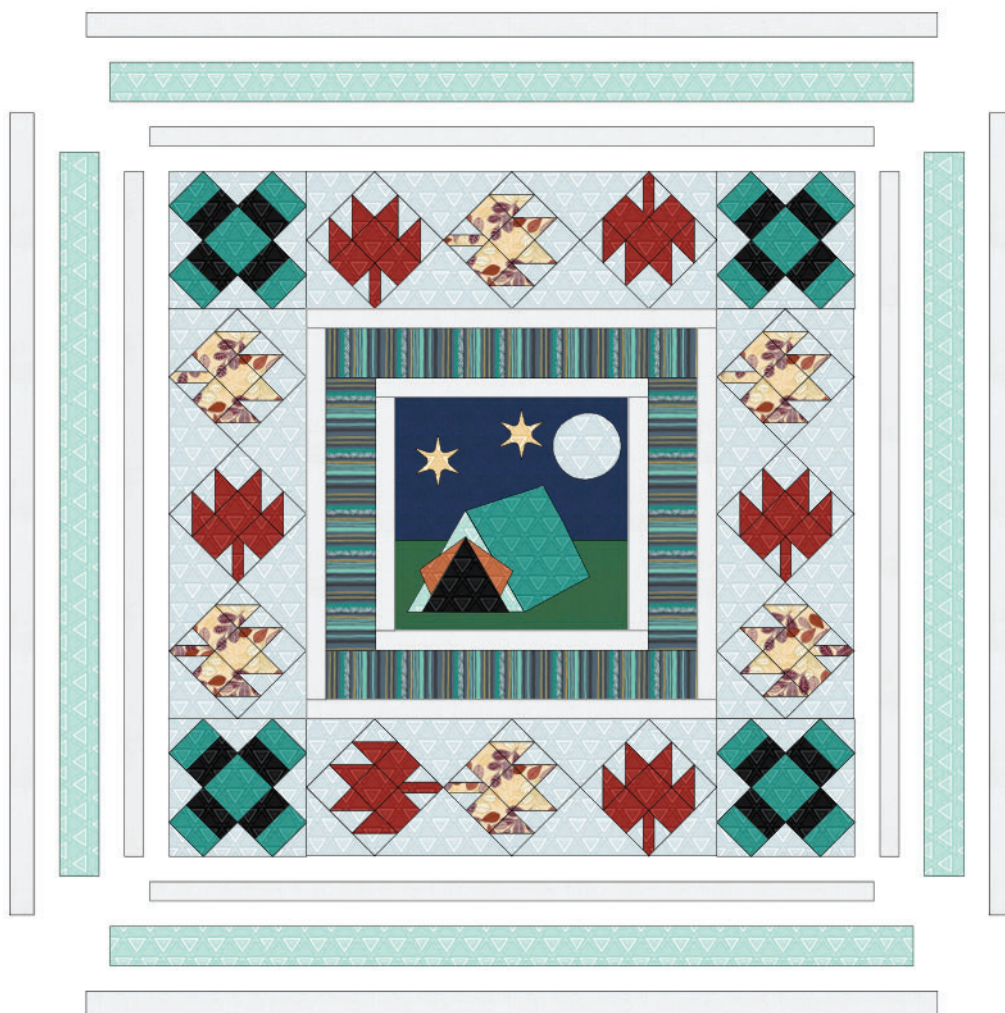


# CAMPGROUND CRITTERS



30. Once Leaf Rows are sewn to the quilt top center, the quilt top center should measure 35 ½" x 35 ½" unfinished.
31. Begin border assembly by sewing (3) Fabric A 1 ¾" x WOF strips together end to end using a diagonal seam. Trim (2) strips to 1 ¾" x 44". The following steps indicate the order in which to sew borders onto the quilt top center.
32. Begin sewing (3) borders onto the quilt top center. All borders will be completed by sewing the side borders on first, followed by the top/bottom border. Press all seams toward the borders. Sew borders on in the following order using diagrams for reference:
  - a. Fabric A 1 ½" x 35 ½"
  - b. Fabric A 1 ½" x 37 ½"
  - c. Fabric M 2 ½" x 37 ½"
  - d. Fabric M 2 ½" x 41 ½"
  - e. Fabric A 1 ¾" x 41 ½"
  - f. Fabric A 1 ¾" x 44"

# CAMPGROUND CRITTERS



33. Begin Block A assembly by sewing (1) Fabric A  $1\frac{1}{4}'' \times 6\frac{1}{4}''$  strip onto either side of (1) Fabric D  $6\frac{1}{4}''$  square. (Please note: Fabric D is directional) Press seams outward toward Fabric A.
34. Complete Block A assembly by sewing (1) Fabric A  $1\frac{1}{4}'' \times 7\frac{3}{4}''$  strip onto the top and bottom of the Fabric D square. Press seams outward toward Fabric A.
35. Block A should measure  $7\frac{3}{4}'' \times 7\frac{3}{4}''$  unfinished. Repeat to create (14) Block A.



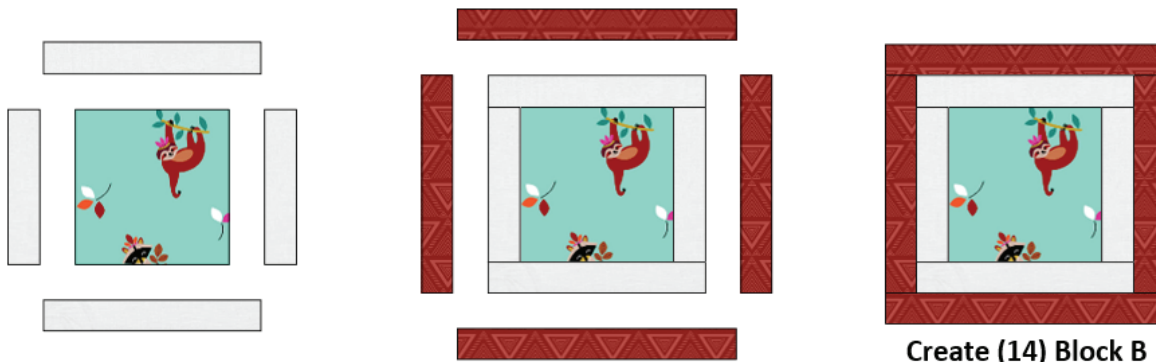
Create (14) Block A

36. Begin Block B assembly by sewing (1) Fabric A  $1\frac{1}{4}'' \times 4\frac{3}{4}''$  strip onto either side of (1) Fabric E  $4\frac{3}{4}''$  square. (Please note: Fabric E is directional) Press seams outward toward Fabric A.



# CAMPGROUND CRITTERS

37. Continue Block B assembly by sewing (1) Fabric A  $1\frac{1}{4}'' \times 6\frac{1}{4}''$  strip onto the top and bottom of the Fabric E square. Press seams outward toward Fabric A.
38. Continue Block B assembly by sewing (1) Fabric L  $1\frac{1}{4}'' \times 6\frac{1}{4}''$  strip onto either side of the unit created in Step 37. Press seams toward Fabric L.
39. Complete Block B assembly by sewing (1) Fabric L  $1\frac{1}{4}'' \times 7\frac{3}{4}''$  strip onto either side of the unit created in Step 38. Press seams outward toward Fabric L.
40. Block B should measure  $7\frac{3}{4}'' \times 7\frac{3}{4}''$  unfinished. Repeat to create (14) Block B.



41. Sew (3) Block A and (3) Block B together, alternating between blocks as you sew to create the side block borders as shown in the diagrams. *(Please note: Because Fabrics D and E are directional, these borders are not interchangeable. Complete one border at a time, referencing diagrams for accurate block placement for each side block border.)* These borders should measure  $7\frac{3}{4}'' \times 44''$  unfinished.
42. Sew (4) Block A and (4) Block B together, alternating between blocks as you sew to create the top and bottom block borders as shown. *(See note in Step 41 for block placement assistance.)* These borders should measure  $7\frac{3}{4}'' \times 58\frac{1}{2}''$  unfinished.

# CAMPGROUND CRITTERS



43. Attach block borders, sewing the side borders on first followed by the top/bottom borders.
44. Attach (1) Fabric F 6 ½" x 58 ½" border strip onto each side of the quilt top center, keeping the border print directional as you sew. Press seams outward toward the border.
45. Attach (1) Fabric F 6 ½" x 70 ½" border strip onto each side of the quilt top center, keeping the border print directional as you sew. Press seams outward toward the border to complete the quilt top.



# CAMPGROUND CRITTERS

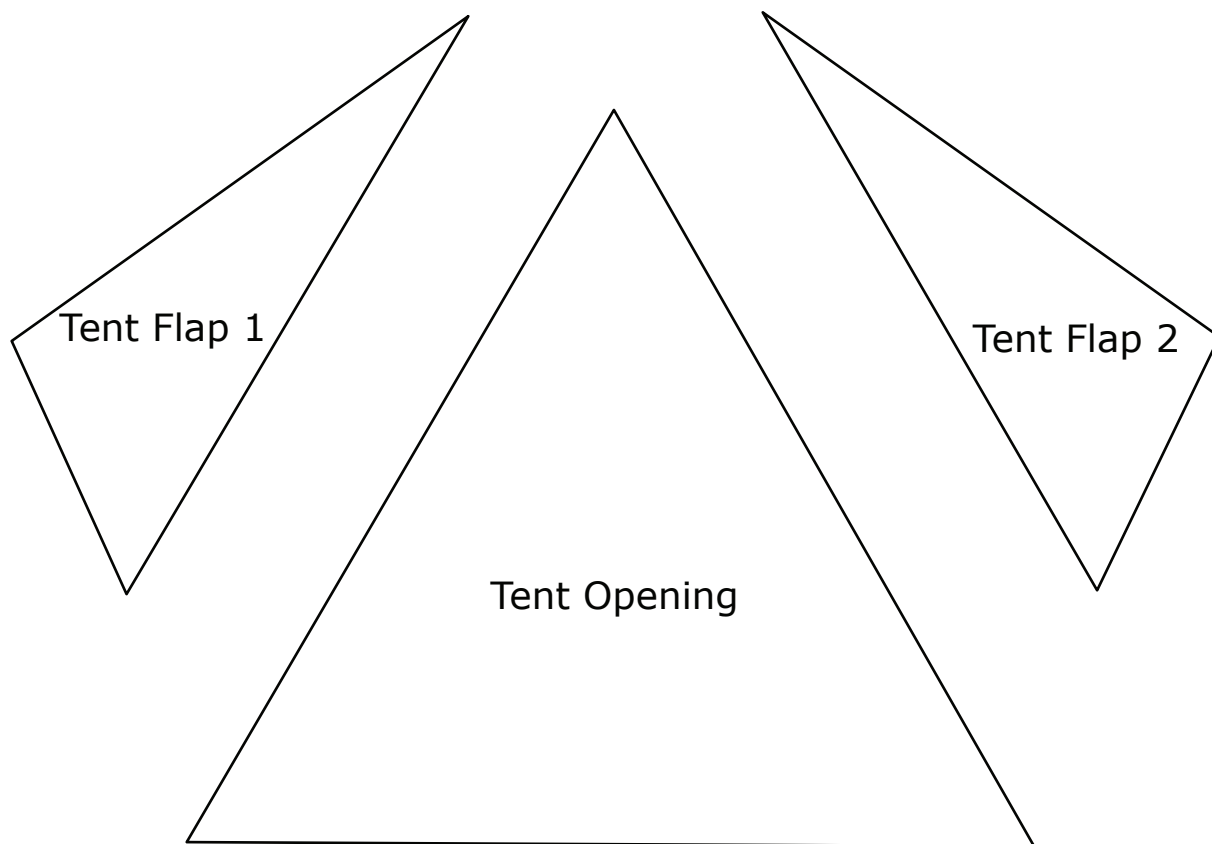
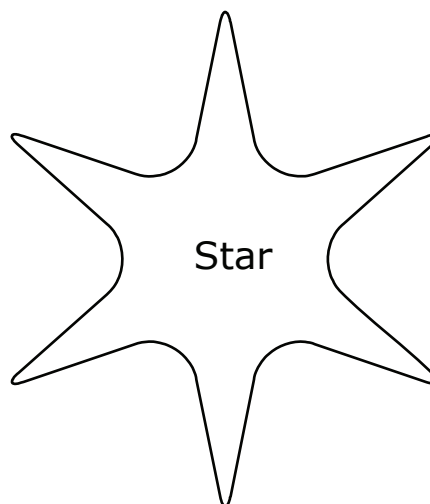
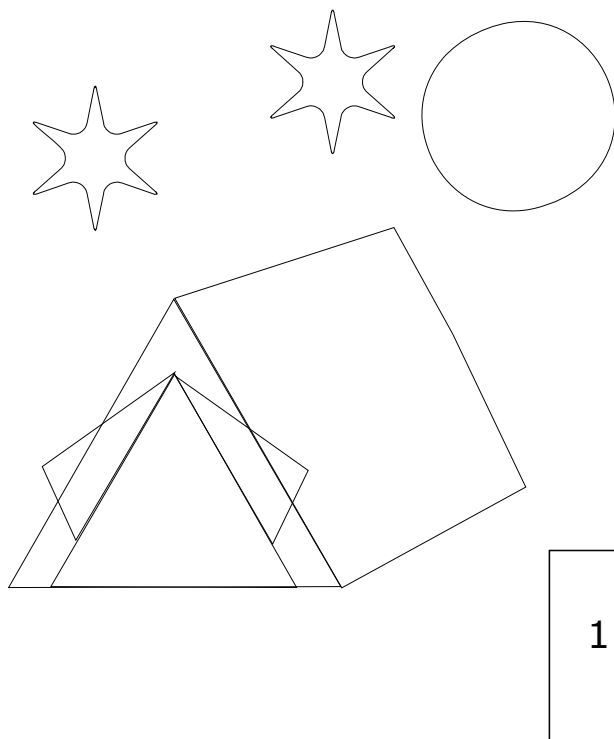


## Quilt Assembly

46. Sandwich quilt with batting and backing. Baste quilt layers together using your preferred method. Quilt as desired.
47. Create binding using (8) Fabric L 2 1/4" x WOF strips. Sew strips together end to end using a diagonal seam. Trim seams to 1/4" and press open.
48. Use an iron to press the long strip in half widthwise with right sides together.
49. Attach binding using your preferred method to complete the quilt.

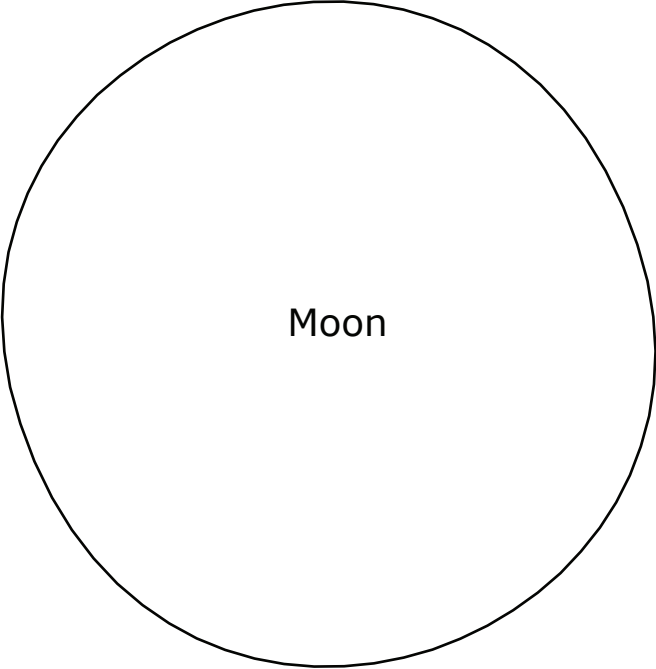
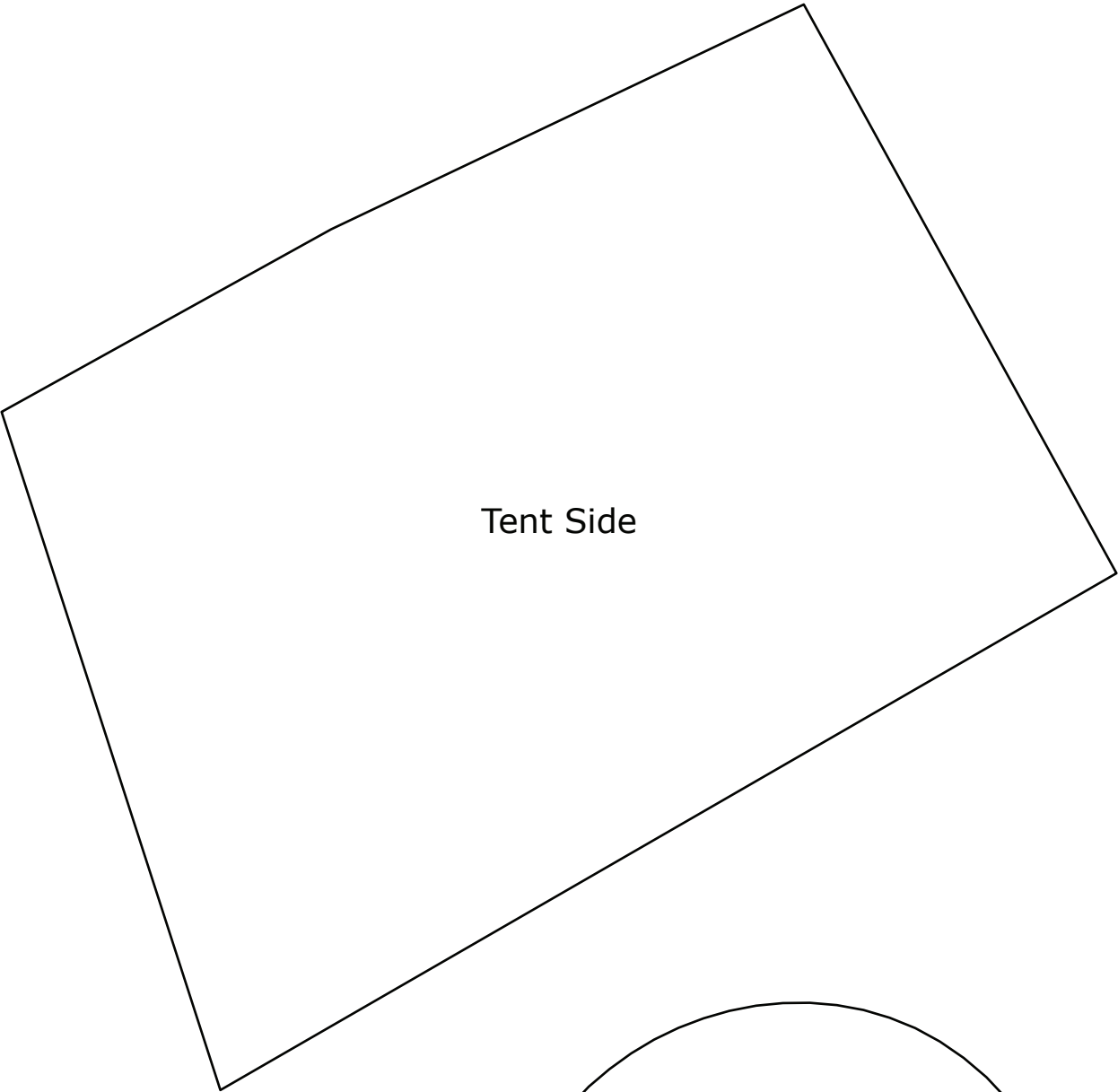
# Campground Critters Templates by Natalie Crabtree

Key Block (29/100 actual size)





Campground Critters Templates by Natalie Crabtree



Campground Critters Templates by Natalie Crabtree

