

# Fiesta Lap Quilt



# Fiesta Lap Quilt

## Fabric Requirements



**CX6715 ESME** 2 yards  
CHOCOLATE



**CX6717 EVITA** 1/2 yard  
CHOCOLATE



**CX6718 EMILIA** 1/2 yard  
CHOCOLATE



**CX6714 ESTELLA** 1/4 yard  
CHOCOLATE



**CX6719 ERNESTA** 1/2 yard  
CHOCOLATE



**CX6720 ELENA** 1 1/2 yards  
CHOCOLATE



**CX6713 EDUARDO** 1/8 yard  
KRYPTONITE



**CX6713 EDUARDO** 1/8 yard  
CORAL



**CX6713 EDUARDO** 1/8 yard  
MERMAID



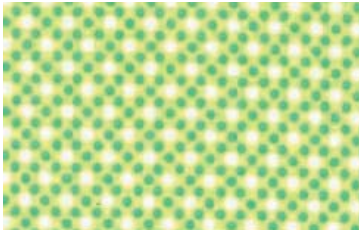
**CX5514 PINHEAD** 1/8 yard  
CEDAR



**CX5514 PINHEAD** 1/8 yard  
ROSE



**CX5514 PINHEAD** 1/8 yard  
SHELL



**CX6322 DIM DOTS** 1/8 yard  
LIMEADE



**SC5333 APRICOT** 1/8 yard  
COTTON COUTURE



**SC5333 ORANGE** 1/8 yard  
COTTON COUTURE



**SC5333 LIPSTICK** 1/8 yard  
COTTON COUTURE



**SC5333 AVOCADO** 1/8 yard  
COTTON COUTURE



**SC5333 LIMEADE** 1/8 yard  
COTTON COUTURE



**SC5333 LUNA** 1/8 yard  
COTTON COUTURE



**SC5333 TURQUOISE** 1/8 yard  
COTTON COUTURE



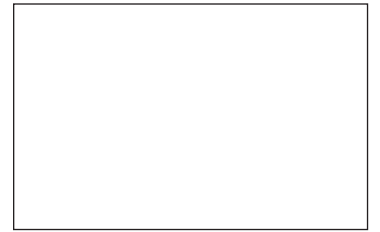
**SC5333 SHELL** 1/8 yard  
COTTON COUTURE



**SC5333 CHOCOLATE** 1/8 yard  
COTTON COUTURE



**SC5333 CAPPUCCINO** 1/8 yard  
COTTON COUTURE



**SC5333 BRIGHT WHITE** 1 yard  
COTTON COUTURE

# Fiesta Lap Quilt

Finished Quilt Size: 43" x 59" Skill Level: Beginner

## Cutting Instructions:

- SC5333 BRIGHT WHITE COTTON COUTURE - Cut 3 strips 1½" x width of fabric (WOF).  
- Cut 8 strips 3" x WOF
- CH6720 ELENA - CHOCOLATE - Cut 4 strips 1½" x 45", centering each strip on a row of flowers as in quilt photo.
- CX6715 ESME - CHOCOLATE - Cut 1 piece 64" x WOF. Set aside for quilt back.
- CX6718 EMILIA - CHOCOLATE - Cut 5 strips 2¼" x WOF, starting each strip exactly where a pink row starts. Set aside for binding.

FABRIC	CUT 2" x 10" RECTANGLES	FABRIC	CUT 2" x 10" RECTANGLES
** CX6719 CHOCOLATE ERNESTA	10	CX5514 SHELL PINHEAD	6
CX6714 CHOCOLATE ESTELLA	5		
CX6720 CHOCOLATE ELENA	6	SC5333 SHELL COTTON COUTURE	4
CX6713 CORAL EDUARDO	6	SC5333 ORANGE COTTON COUTURE	4
CX6713 KRYPTONITE EDUARDO	5	SC5333 APRICOT COTTON COUTURE	3
CX6713 MERMAID EDUARDO	5	SC5333 TURQUOISE COTTON COUTURE	5
CX6715 CHOCOLATE ESME	10	SC5333 LUNA COTTON COUTURE	5
** CX6718 CHOCOLATE EMILIA	7	SC5333 AVOCADO COTTON COUTURE	5
** CX6717 CHOCOLATE EVITA	16	SC5333 LIPSTICK COTTON COUTURE	6
CX6322 LIMEADE DIM DOTS	5	SC5333 LIMEADE COTTON COUTURE	6
CX5514 CEDAR PINHEAD	6	SC5333 CHOCOLATE COTTON COUTURE	4
CX5514 ROSE PINHEAD	5	SC5333 CAPPUCINO COTTON COUTURE	4

\*\* CX6717, CX6718 & CX6719 - These are all striped fabrics. Cut these fabrics to randomly highlight a particular colored stripe in each rectangle (See quilt photo for examples).

# Fiesta Lap Quilt

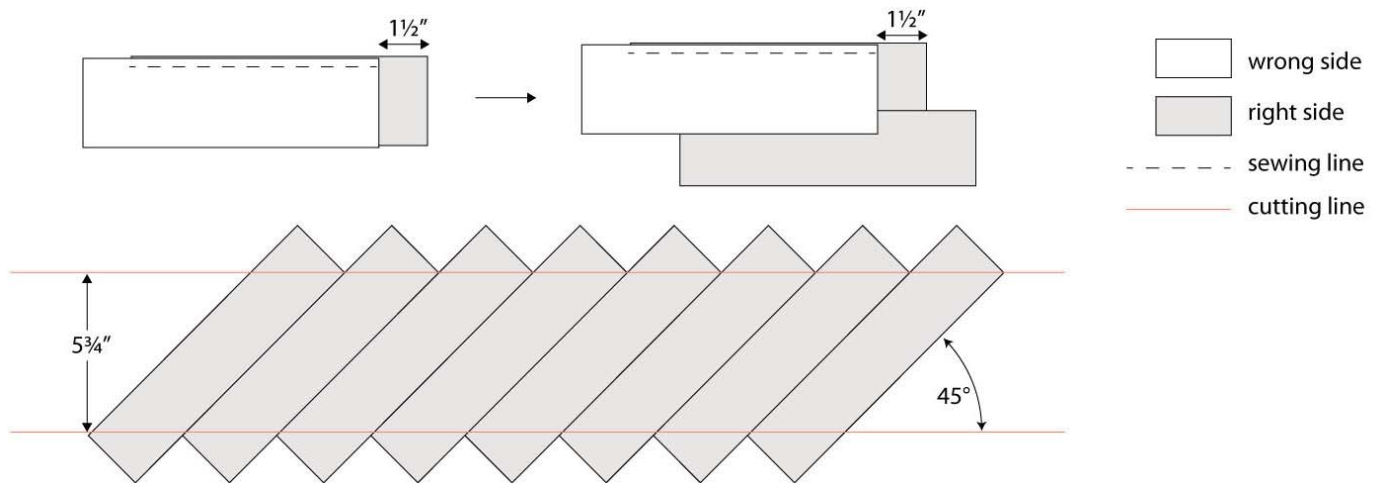
## Also Needed:

- 45" x 64" quilt batting.
- A rotary cutter, a long acrylic ruler, cutting mat, thread, scissors, pins, pencil.

## Making Herringbone Rows:

Layout cut rectangles in 6 rows of 23. Your first row should contain predominantly turquoise and brown fabrics, the next, turquoise and greens, the third, mostly greens, the fourth lighter corals and greens, the fifth, corals and pinks. Your last row should contain predominantly coral, orange and brown fabrics. Try to distribute similar fabrics so that they are not too close to each other. If in doubt, use the quilt photo as a reference.

Start piecing, one row at a time. With right sides together, place the second rectangle upside down on top of the first, then move it over exactly 1½" to the LEFT. Sew a ¼" seam along the top, where the two pieces overlap. Lift the top (2nd) fabric and place the third fabric upside down on top of the second. Move it over exactly 1½" to the LEFT. Sew a ¼" seam along the top, where the two pieces overlap. Continue with all 23 fabrics in the row. Press seams open.



Repeat the process with the second row, but instead of moving each new piece 1½" to the left, place them 1½" to the RIGHT. Repeat for the next four rows, alternating between the LEFT and RIGHT rows.

Place your first row on your cutting board with the rectangle strips at an exact 45° angle. Your top and bottom points should be perfectly horizontal. Measure a vertical 5¾" segment, centered on the row. Cut the points off that extend beyond the 5¾" segment. Repeat for the other five rows (three of which will have rectangles heading in the opposite direction).

## Piecing Quilt Top:

You now have a number of long strips of fabric. Using the Quilt photo as a reference, start piecing them together, pinning first (especially when working with the herringbone strips to be sure parallel strips line up. Your first strip should be a 3" wide white strip, then a 1½" flower strip, another 3" wide white strip, then the first herringbone strip, a 1½" wide white strip, and the second herringbone strip. Repeat, following this order, ending with the last 3" wide white strip. Press all seams away from the solid white fabric.

## Assembling Quilt:

Square up quilt top. Layer backing, batting and quilt top. Baste or pin.  
Quilt as desired.  
Join binding strips together and bind in your preferred fashion.