

michael miller FABRICS

SAILOR'S VALENTINE BLUE QUILT

SIZE 55-1/2"W X 55-1/2"H | LEVEL CONFIDENT BEGINNER | PATTERN BY MARSHA MOORE



*THIS IS A DIGITAL REPRESENTATION OF THE QUILT TOP. FABRIC MAY VARY.
FREE PATTERN AVAILABLE ON MICHAELMILLERFABRICS.COM

FABRIC REQUIREMENTS

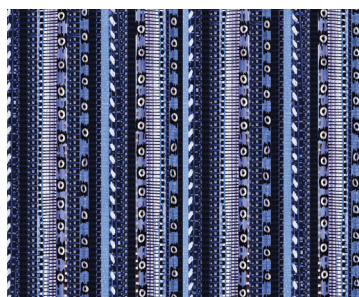
WE DO OUR BEST TO MAKE SURE THESE ARE ACCURATE YARDAGES
BUT THESE ARE ESTIMATES UNTIL THE FINAL PATTERN IS COMPLETED AND EDITED. THANK YOU.



**CX8627 BLUE
BEACHCOMBER SHELLS**
1-1/4 YARDS



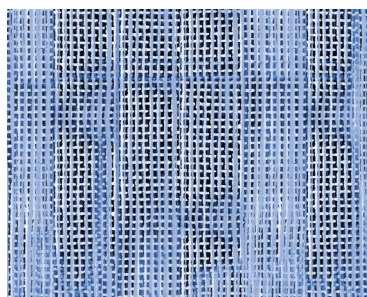
**CX8628 BLUE
BEACHCOMBER SHELL
STRIPE**
3/4 YARD



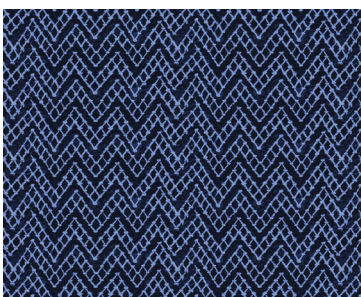
**CX8629 BLUE
BEACHCOMBER STRIPE**
7/8 YARD*



**CX8630 BLUE
BEACHCOMBER PATCH**
3/4 YARD



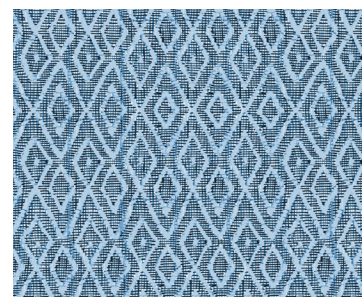
**CX8631 BLUE
BEACHCOMBER CANVAS**
1/8 YARD



**CX8632 BLUE
BEACHCOMBER
CHEVRON**
1/2 YARD



**SC5333 BRIGHT WHITE
COTTON COUTURE**
7/8 YARD



**(BACKING)
CX8633 BLUE
BEACHCOMBER ARGYLE**
2-3/4 YARDS

FABRIC REQUIREMENTS

SKU	YARDAGE PER ONE QUILT	# OF BOLTS FOR 12 KITS	# OF BOLTS FOR 24 KITS
(A) CX8627-BLUE	1-1/4 YARDS	1 BOLT (15 YARDS)	2 BOLTS (30 YARDS)
(B) CX8628-BLUE	3/4 YARDS	1 BOLT (9 YARDS)	2 BOLTS (18 YARDS)
(C) CX8629-BLUE	7/8 YARD*	1 BOLT (10-1/2 YARDS)	2 BOLTS (21 YARDS)
(D) CX8630-BLUE	3/4 YARD	1 BOLT (9 YARDS)	2 BOLTS (18 YARDS)
(E) CX8631-BLUE	1/8 YARD	1 BOLT (1-1/2 YARDS)	1 BOLT (3 YARDS)
(F) CX8632-BLUE	1/2 YARD	1 BOLT (6 YARDS)	1 BOLT (12 YARDS)
(G) SC5333-BRIGHT WHITE	7/8 YARD	1 BOLT (10-1/2 YARDS)	2 BOLTS (21 YARDS)
(BACKING) CX8633-BLUE	2-3/4 YARDS	3 BOLTS (33 YARDS)	5 BOLTS (66 YARDS)
TOTAL BOLTS NEEDED		10 BOLTS (7 W/O BACK)	17 BOLTS (12 W/O BACK)

*INCLUDES BINDING

Sailor's Valentine

By Marsha Evans Moore
Size: 55-1/2" x 55-1/2"

Fabric Requirements

Beachcomber by Michael Miller Fabrics
Choose either the Denim or Sand Colorway.

Refer to photo for fabric placement. Make a 3-1/2" square plastic template for the border squares to fussy cut shell fabric A. Make a 11-1/2" square plastic template or paper pattern to cut panel fabric D.

Fabric	Amount	Cutting
A - CX8627 Shells	1-1/4 yards	(1) 17" square; cut in half diagonally twice to make (4) large triangles (2) 8-3/4" squares; cut each in half diagonally to make (4) small triangles (36) 3-1/2" border squares fussy-cut over shell motifs
B - CX8628 Shell Strip	3/4 yards	(6) 3-1/2" x WOF strips
C - CX8629 Stripe	3/4 yard	(6) 2-1/2" x WOF binding strips (5) 1-3/4" x WOF strips; sub-cut into (16) 11-1/2" x 1-3/4" sashing strips
D - CX8630 Patch	3/4 yard	(5) 11-1/2" squares centered over shell panels
E - CX8631 Canvas	1/8 yard	(4) 2-1/4" small border squares
F - CX8632 Chevron	1/2 yard	(4) 35-1/2" x 2-1/4" border strips (4) 4-3/4" large border squares
G - Cotton Couture sc5333 BWHT – D	7/8 yard	(6) 1-3/4" x WOF border strips (2) 5-1/2" x WOF strips; sub-cut into (14) 5-1/2" squares (cut (2) additional 5-1/2" squares); then cut squares in half diagonally twice to make (64) large border triangles (1) 3-1/8" x WOF strip; sub-cut into (8) 3-1/8" squares; then cut in half diagonally to make (16) small border triangles (4) 1-3/4" sashing squares (4) 2-1/4" squares; cut in half diagonally to make sashing triangles
H - CX8633 Argyle	2-3/4 yards	backing

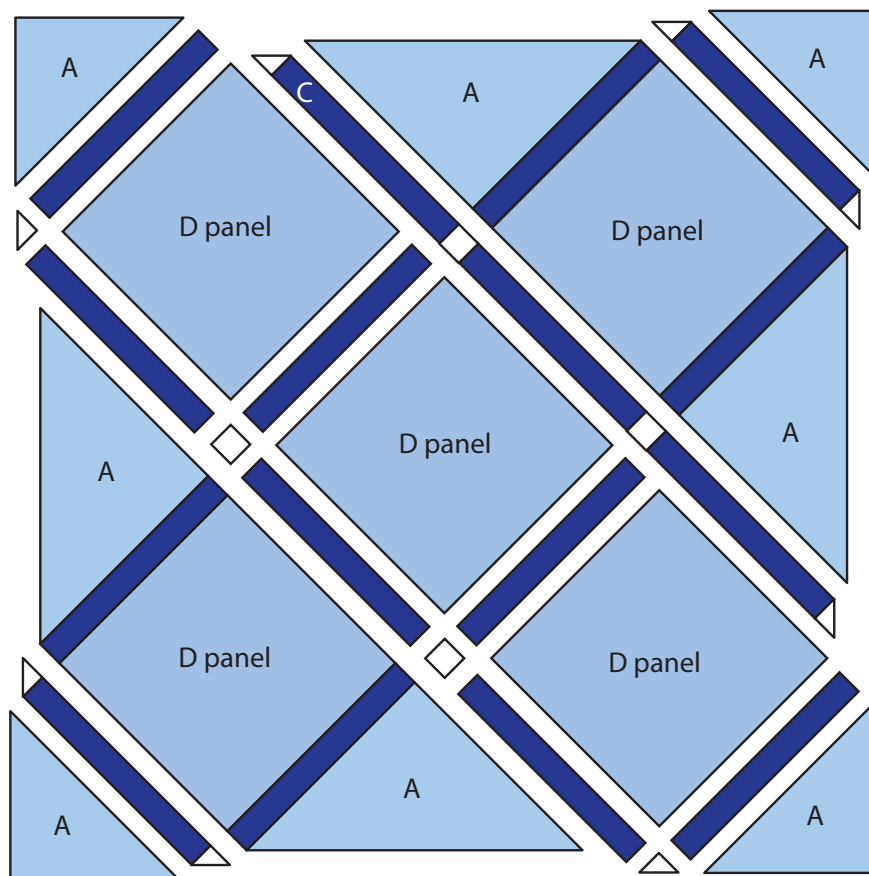
Additional Requirements: 68" x 68" batting, thread to match fabrics, template plastic, sewing machine, iron, basic sewing supplies. Optional: paper for pattern.

Directions

Sew all seams right sides together using $\frac{1}{4}$ " seam allowance.

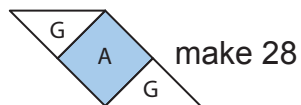
Quilt Center Assembly

1. Arrange the fabric D panels, large and small fabric A triangles, fabric C sashing strips and fabric G sashing squares and triangles.
2. Sew sashing strips and blocks together in diagonal rows to make block rows.
3. Sew sashing strips, sashing squares and sashing triangles together to make sashing rows.
4. Sew block rows and sashing rows together matching seams. Sew remaining small fabric A triangles to short sashing rows.

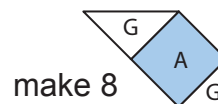


Patchwork Border

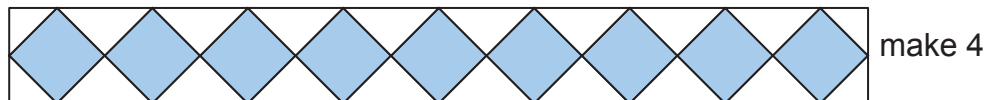
1. Sew fabric G large border triangles to opposite sides of the fabric A border squares.



2. Sew a fabric G large border triangle and a small border triangle to remaining Border squares.

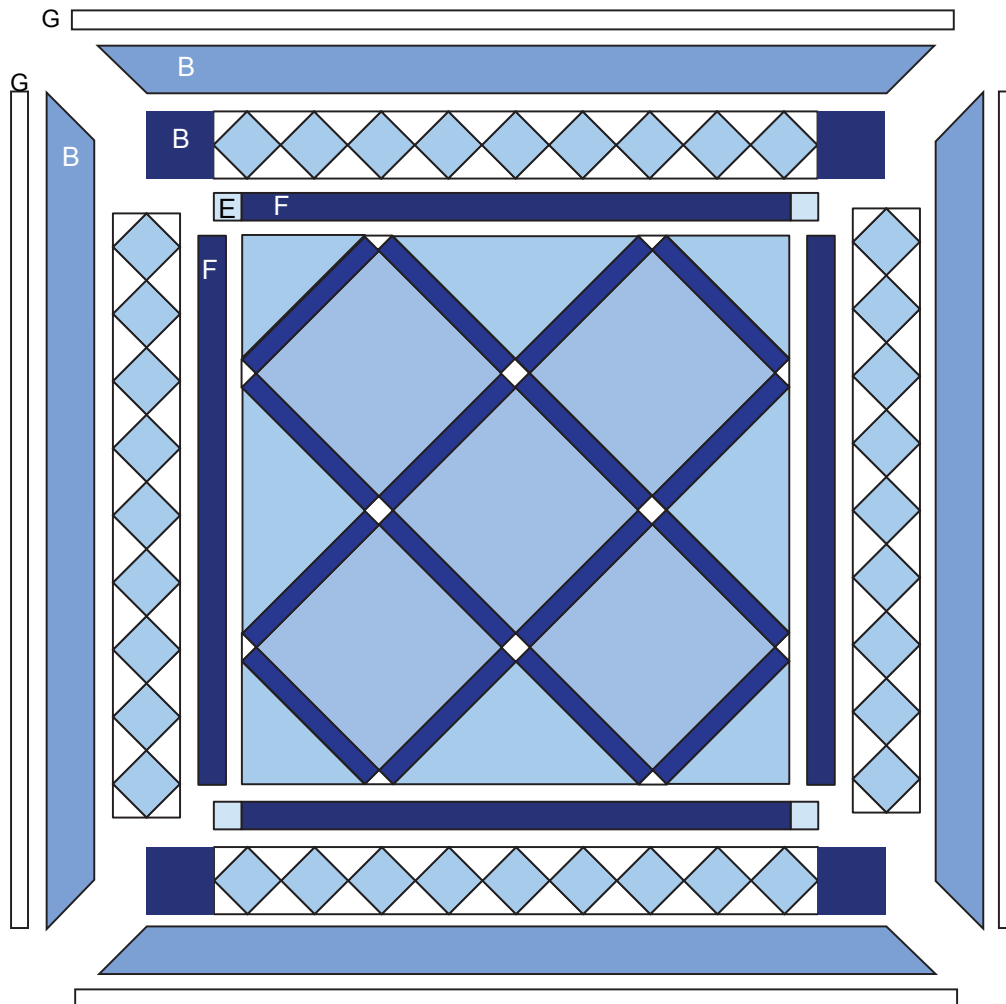


3. Sew 9 border square units together. Sew a small border triangle to remaining corners of patchwork border.



Borders

1. Sew a 2-1/4" fabric F border to the side edges of quilt center.
2. Sew a 2-1/4" fabric E border square to ends of remaining borders. Sew to the top and bottom edges of the quilt center.
3. Sew (2) patchwork borders to sides of quilt.
4. Sew (2) fabric F large border squares to ends of remaining patchwork borders. Sew to the top and bottom edges of the quilt.
5. Sew ends of (6) 3-1/2" x WOF fabric B border strips together. Cut (4) 53-3/4" borders centered over stripes. Trim ends diagonally.
6. Sew border to edges of quilt beginning and ending stitching 1/4" from edge of quilt. Sew diagonal ends of borders together.
8. Sew ends of (6) 1-3/4" x WOF fabric G strips together. Cut (2) 53-1/4" borders and (2) 55-1/4" borders.
9. Sew short fabric G borders to side edges of quilt
10. Sew long fabric G borders to top and bottom edges of quilt.



Layer, quilt
and bind!