

michael miller FABRICS

# HORSE AND RIDER QUILT

SIZE 66"W X 66"H | LEVEL CONFIDENT BEGINNER | PATTERN BY DEBBY KRATOVIL



\*THIS IS A DIGITAL REPRESENTATION OF THE QUILT TOP. FABRIC MAY VARY.  
**FREE PATTERN AVAILABLE ON [MICHAELMILLERFABRICS.COM](http://MICHAELMILLERFABRICS.COM)**



# FABRIC REQUIREMENTS

WE DO OUR BEST TO MAKE SURE THESE ARE ACCURATE YARDAGES  
BUT THESE ARE ESTIMATES UNTIL THE FINAL PATTERN IS COMPLETED AND EDITED. THANK YOU.



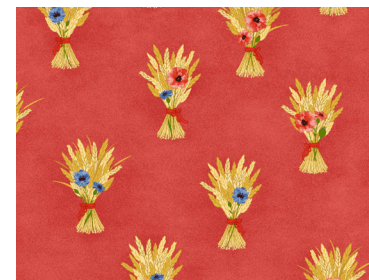
**DM8487 WHEAT  
COUNTRY PATH**  
1-1/2 YARDS



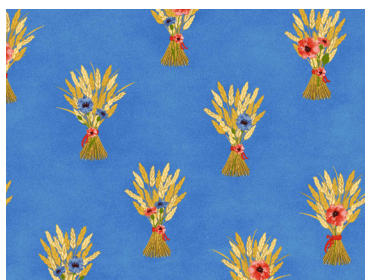
**SC5333 CREAM  
COTTON COUTURE**  
3-1/4 YARDS



**DM8488 CRANBERRY  
FLORAL PATH**  
1/4 YARD



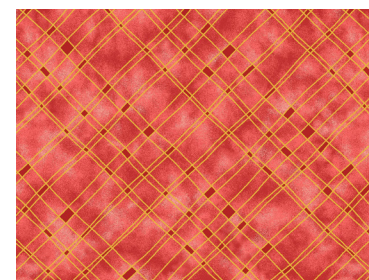
**DM8489 RAVEN  
WHEAT BOUQUET**  
1/4 YARD



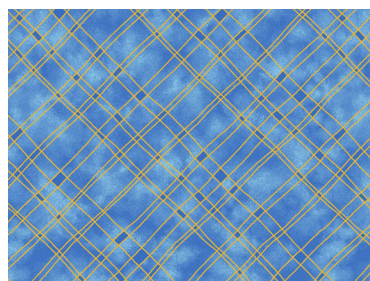
**DM8489 COBALT  
WHEAT BOUQUET**  
1/4 YARD



**DM8489 FOREST  
WHEAT BOUQUET**  
1/4 YARD



**DM8490 RAVEN  
GUIDED PLAID**  
1/4 YARD



**DM8490 COBALT  
GUIDED PLAID**  
1/4 YARD



**DM8488 BLUEBERRY  
FLORAL PATH**  
1/2 YARD



**DM8491 MEADOW  
CHATEAU CHIC**  
1 YARD\*



**(BACKING)  
YOUR CHOICE**  
4 YARDS

## FABRIC REQUIREMENTS

SKU	YARDAGE PER ONE QUILT	# OF BOLTS FOR 12 KITS	# OF BOLTS FOR 24 KITS
(A) DM8487-WHEAT	1-1/2 YARDS	2 BOLTS (18 YARDS)	3 BOLTS (36 YARDS)
(B) SC5333-CREAM	3-1/4 YARDS	4 BOLTS (39 YARDS)	7 BOLTS (78 YARDS)
(C) DM8488-CRANBERRY	1/4 YARD	1 BOLT (3 YARDS)	1 BOLT (6 YARDS)
(D) DM8489-RAVEN	1/4 YARD	1 BOLT (3 YARDS)	1 BOLT (6 YARDS)
(E) DM8489-COBALT	1/4 YARD	1 BOLT (3 YARDS)	1 BOLT (6 YARDS)
(F) DM8489-FOREST	1/4 YARD	1 BOLT (3 YARDS)	1 BOLT (6 YARDS)
(G) DM8490-RAVEN	1/4 YARD	1 BOLT (3 YARDS)	1 BOLT (6 YARDS)
(H) DM8490-COBALT	1/4 YARD	1 BOLT (3 YARDS)	1 BOLT (6 YARDS)
(I) DM8488-BLUEBERRY	1/2 YARD	1 BOLT (6 YARDS)	1 BOLT (12 YARDS)
(J) DM8491-MEADOW*	1 YARD	1 BOLT (12 YARDS)	2 BOLTS (24 YARDS)
(BACKING) YOUR CHOICE	4 YARDS	4 BOLTS (48 YARDS)	7 BOLTS (96 YARDS)
<b>TOTAL BOLTS NEEDED</b>		<b>18 BOLTS (14 W/O BACK)</b>	<b>26 BOLTS (19 W/O BACK)</b>

\*INCLUDES BINDING

Horse & Rider Quilt  
By Debby Kratovil

Block Size: 10" x 10"

Quilt Size: 66" x 66"

Fabrics:

- 1-1/2 yards of DM8487 Country Path\_Wheat (borders)
- 3-1/4 yard Cream Cotton Couture (for block background)
- 1/4 yard each of the following for blocks
  - DM8488\_Floral Path Cranberry (Fabric A)
  - DM8489\_Wheat Bouquet Raven (Fabric B)
  - DM8489\_Wheat Bouquet Cobalt (Fabric C)
  - DM8489\_Wheat Bouquet Forest (Fabric D)
  - DM8490\_Guided Plaid Raven (Fabric E)
  - DM8490\_Guided Plaid Cobalt (Fabric F)
- 1/2 yard of DM8488\_Floral Path Blueberry for blocks (Fabric G)
- 1 yard DM8491 Chateau Chic\_Meadow (inner border and binding)
- 4 yards DM7965 Fall (backing, which will be pieced)
- Twin sized batting

Cutting for the Arrowheads Blocks:

- From the Cream Cotton Couture cut: 8 strips 6-1/2" x wof. Fold fabric, wrong sides together for the cutting. Use the Template B provided (or your multi-sized 60 degree ruler) and cut out a total of 50 Template B and Template B reversed. These are for the left side and right side of each colored Template A triangle.



Diagram 1



Template B

Template B reverse

- From the Cream Cotton Couture cut: 13 strips 2" x wof; recut these into 50 strips 2" x 10-1/2". (These will finish the Arrowheads blocks on two sides)
- From Fabrics A, B, C, D, E, and G cut one 6-1/2" x wof strip. From Fabric G cut two 6-1/2" x wof strips. Use the Template A and cut out a total of 8 Triangles Fabric A, C and D; six Template A from Fabric B; four Template A from Fabrics E and G; and twelve Template A from Fabric F.

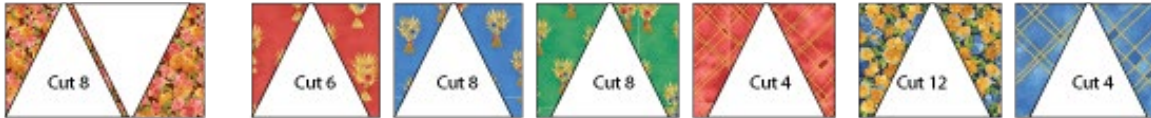


Diagram 2

Template A Triangles



### Sewing the Arrowheads Blocks

- Place a left Triangle B on Triangle A as shown (right sides together), using the notched tip of Triangle B to align with bottom edge of Triangle A. This is IMPORTANT. Also note the overhang at the top (both areas are circled). Sew with 1/4" seam. Press AWAY from Triangle A.

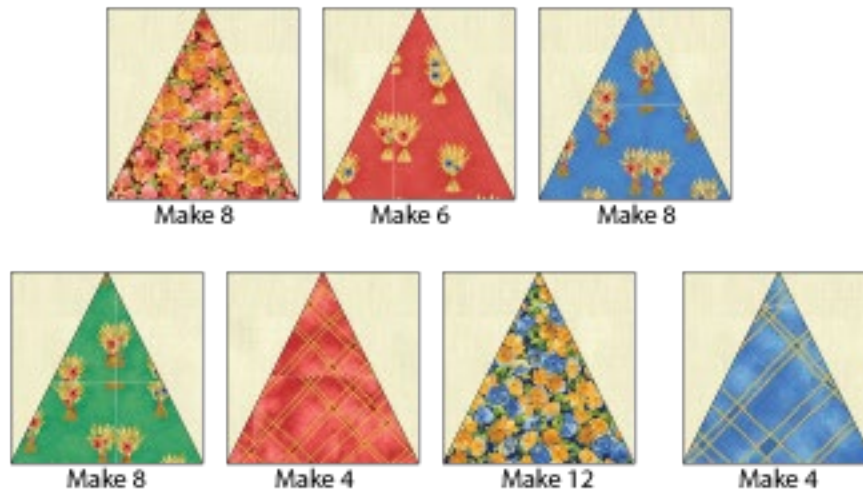


- Repeat the aligning and sewing for the remaining right Triangle B, matching the notch at the bottom and having the overhanging point at the top. Press seam away from Triangle A.

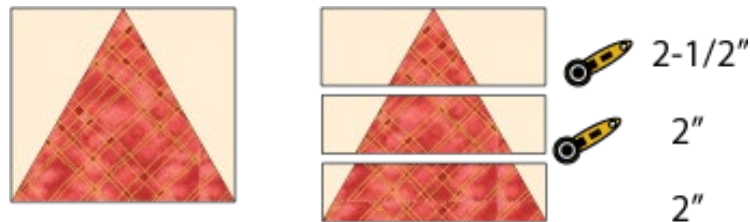


- Sew the Template B triangles to the Template A triangles as shown, to make a total of 50 half-Arrowheads blocks. Keep colors together.

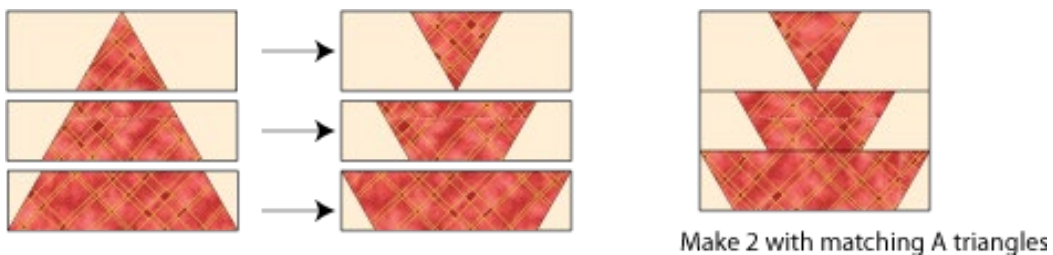




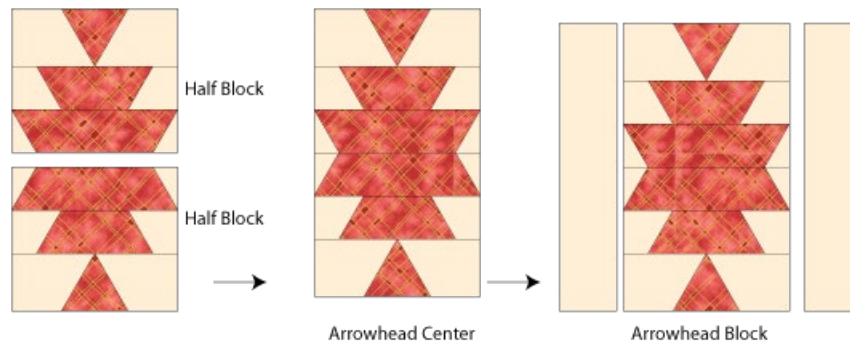
Take TWO matching units from above and cut as shown:



- Flip each of the 3 horizontal block parts and turn them 180 degrees as shown. Stitch these into the half-block as shown. Make two matching half-blocks. Sew them together and press this seam open.



- Join a 2" x 10-1/2" cream strip to each side of the Arrowhead Block center for the whole Arrowhead Block, measuring 10-1/2" x 10-1/2". Make 25 of these Arrowhead Blocks using matching pairs from the units you sewed above.



### Quilt Assembly

- Arrange the 25 Arrowheads blocks in five rows of 5 blocks each, alternating the orientation of the block vertical and horizontal with each block. Press seams well.
- Quilt center now measures 50-1/2" x 50-1/2". Cut six 1-1/2" strips from the green stripe (DM8491 Chateau Chic\_Meadow) and seam together strips for the side borders (1-1/2" x 50-1/2"). Stitch to sides. Join the remaining strips to make the top and bottom inner borders and sew. Press seams.



- Cut outer border print (DM8487 Country Path\_Wheat) into four strips 7-1/2" x 52-1/2". These are cut parallel to the selvedge. Sew two to quilt sides. Press well.
- Measure quilt for top and bottom borders (should be 66-1/2"). Cut two 7-1/2" x 66-1/2" strips and join to quilt at top and bottom. Press well.

#### Finishing

- Layer quilt top, batting and backing and quilt as desired. Trim batting and backing even with the quilt top.
- Cut seven 2-1/4" x wof strips from the green stripe (DM8491 Chateau Chic\_Meadow). Seam together for the binding and finish the quilt.

Template B & B-Reverse

Template A for Horse & Rider

[www.quilterbydesign.com](http://www.quilterbydesign.com)