

michael miller FABRICS

# Boudoir

SIZE: 36" x 40" • LEVEL: Advanced Beginner • PATTERN BY: Heidi Pridemore • Boudoir Collection  
PATTERN AVAILABLE ON:



THIS IS A DIGITAL REPRESENTATION OF THE QUILT TOP, FABRIC MAY VARY.

**PLEASE NOTE:** BEFORE BEGINNING YOUR PROJECT, CHECK FOR ANY PATTERN UPDATES AT [MICHAELMILLERFABRICS.COM](http://MICHAELMILLERFABRICS.COM)'S FREE PROJECTS SECTION.

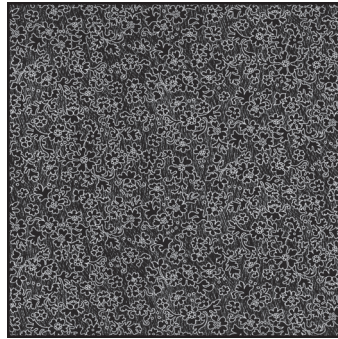
p.212.704.0774 | [info@michaelmillerfabrics.com](mailto:info@michaelmillerfabrics.com) | [www.michaelmillerfabrics.com](http://www.michaelmillerfabrics.com)



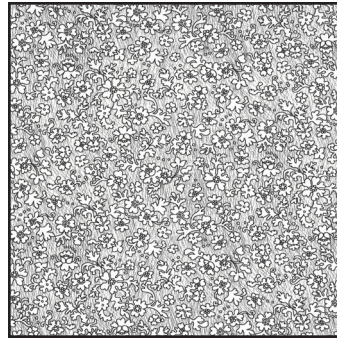
# Boudoir



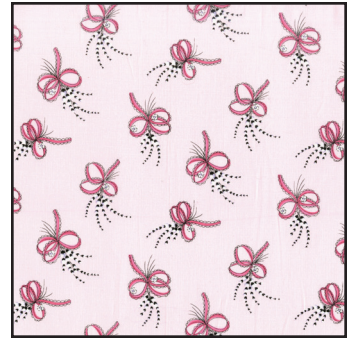
**FABRIC A**  
DC8501-Red  
2/3 yard



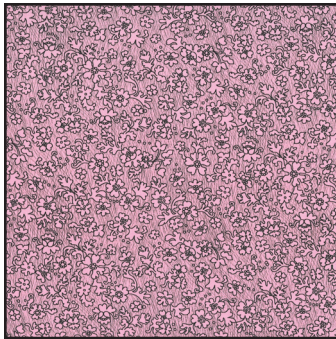
**FABRIC B**  
DC8503-Black  
1/8 yard



**FABRIC C**  
DC8503-Ebony  
1/4 yard



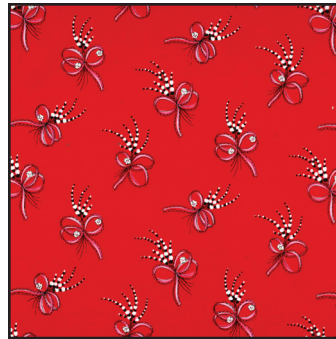
**FABRIC D**  
DC8504-Pink  
1/8 yard



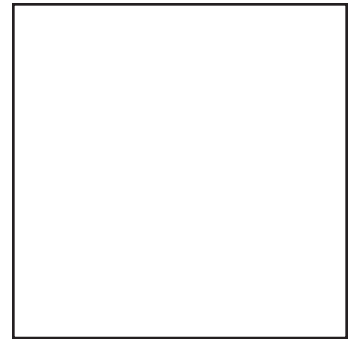
**FABRIC E**  
DC8503-Pink  
1/4 yard



**FABRIC F**  
DC8504-Black  
1/4 yard



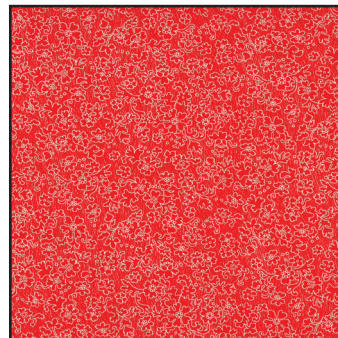
**FABRIC G**  
DC8504-Red  
1/4 yards



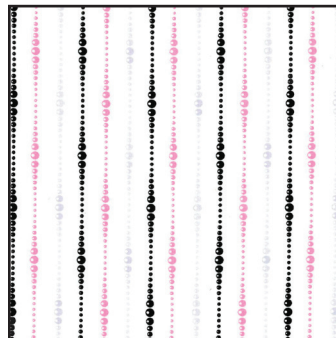
**FABRIC H**  
SC5333-White  
5/8 yard



**FABRIC I**  
DC8498-Black  
1/2 yards



**FABRIC J**  
DC8503-Red  
3/8 yards



**FABRIC K**  
DC8502-Sorbet  
3/4 yards



**BACKING**  
DC8500-Soft White  
2-1/2 yards



# Boudoir

KEY	CUTTING INSTRUCTIONS
A	See instructions to cut (1) Dress.
B	See instructions to cut (1) Belt.
C	See instructions to cut (1) Stand Bottom. See instructions to cut (1) Stand Top.
D	See instructions to cut (1) Choker.
E	(2) 1-1/2" x 26-1/2" WOF strips. (2) 1-1/2" x 24-1/2" WOF strips.
F	(2) 2-1/2" x WOF strips. Sub-cut (13) 2-1/2" x 4-1/2" strips.
G	(2) 2-1/2" x WOF strips. Sub-cut (13) 2-1/2" x 4-1/2" strips.
H	(4) 2-1/2" x WOF strips. Sub-cut (56) 2-1/2" squares. (2) 1-1/2" x 30-1/2 WOF strips. (2) 1-1/2" x 32-1/2" WOF strips.
I	(2) 3-1/2" x 34-1/2" WOF strips. (2) 3-1/2" x 36-1/2" WOF strips.
J	<b>FOR BINDING:</b> (4) 2-1/2" x WOF strips
K	(1) 22-1/2" x 26-1/2" WOF strip.
Back	(2) 44" x WOF strips. Piece the strips together and trim to make the 44" x 48" pieced backing.

## Block Assembly:

1. Following the manufacturer's instructions, trace the listed number of each template onto the paper side of the fusible web. Roughly cut out each template about 1/8" outside the drawn lines.
2. Press each template onto the wrong side of the fabrics as listed on the templates. Cut out each template on the drawn lines.
3. Refer to **Figure 1** to arrange and press the assorted dress, stand and accessories onto the 22-1/2" x 26-1/2" Fabric **K** strip.
4. Finish the raw edges of each shape with a decorative stitch such as a buttonhole or satin stitch to make the **Center Block**.

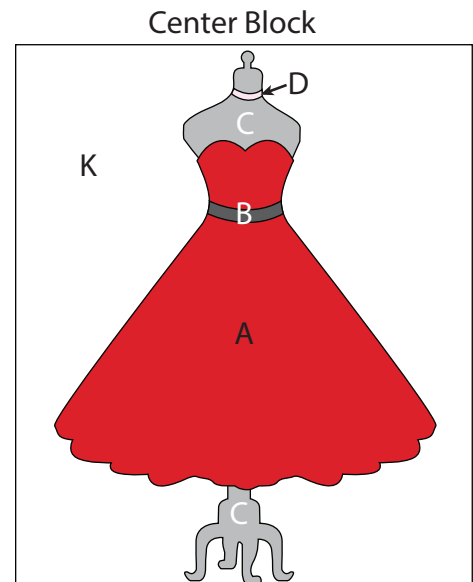


Fig. 1

5. Place (1) 2-1/2" Fabric **H** square on the left side of (1) 2-1/2" x 4-1/2" Fabric **F** strip, right sides together (**Fig. 2**). Sew across the diagonal of the square from the upper right corner to the lower left corner (**Fig. 2**). Trim away the excess fabric from behind the triangle, leaving a 1/4" seam allowance. Flip open the triangle formed and press (**Fig. 3**).
6. Place another 2-1/2" Fabric **H** square on the right side of the 2-1/2" x 4-1/2" Fabric **F** strip, right sides together (**Fig. 4**). Sew across the diagonal of the square from the upper left corner to the lower right corner (**Fig. 4**). Trim away the excess fabric from behind the triangle, leaving a 1/4" seam allowance. Flip open the triangle formed and press to make (1) **Unit 1** strip (**Fig. 5**).
7. Repeat **Steps 5-6** to make (13) **Unit 1** strips total.
8. Repeat **Steps 5-6** and refer to **Figure 6** for fabric identification, placement and seam direction to make (13) **Unit 2** strips.



Fig. 2

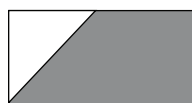


Fig. 3

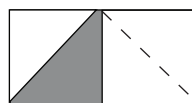


Fig. 4

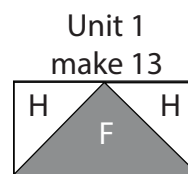


Fig. 5

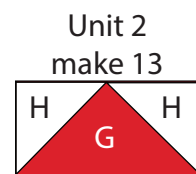


Fig. 6





# Boudoir

## Quilt Top Assembly:

*(Refer to the Quilt Layout when assembling the quilt top.)*

**9.** Sew (1) 1-1/2" x 26-1/2" Fabric **E** strip to each side of the **Center Block**. Sew (1) 1-1/2" x 24-1/2" Fabric **E** strip to the top and to the bottom of the **Center Block**.

**10.** Sew (4) **Unit 2** strips and (3) **Unit 1** strips together end to end and alternating them. Sew the newly sewn strip to the left side of the **Center Block**.

**11.** Sew (4) **Unit 1** strips and (3) **Unit 2** strips together end to end and alternating them. Sew the newly sewn strip to the right side of the **Center Block**.

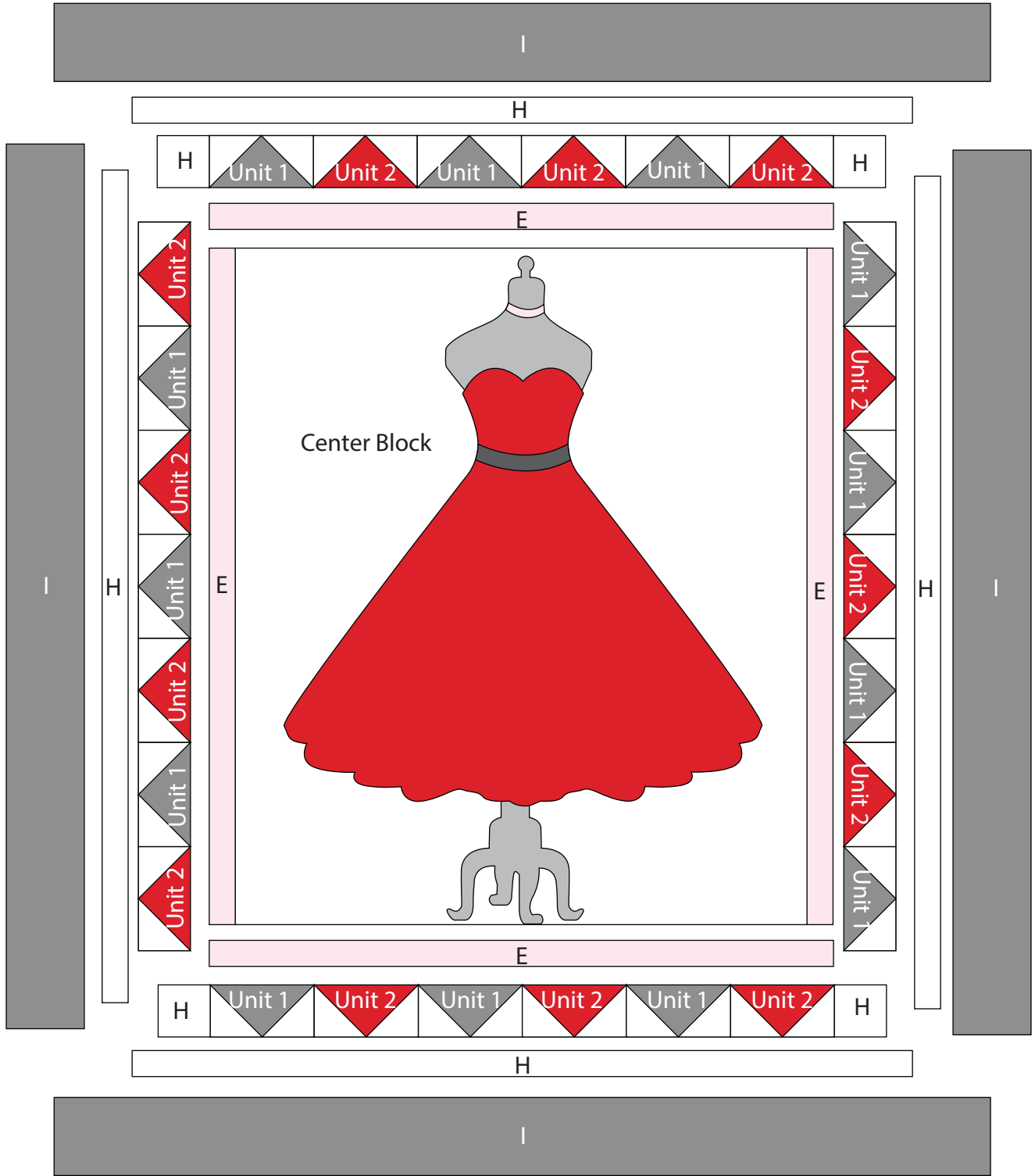
**12.** Sew (3) **Unit 1** strips and (3) **Unit 2** strips together end to end. Sew (1) 2-1/2" Fabric **H** square to each end of the strip. Repeat to make a second strip. Sew the newly sewn strips to the top and to the bottom of the **Center Block**.

**13.** Sew (1) 1-1/2" x 32-1/2" Fabric **H** strip to each side of the **Center Block**. Sew (1) 1-1/2" x 30-1/2" Fabric **H** strip to the top and to the bottom of the **Center Block**.

**14.** Sew (1) 3-1/2" x 34-1/2" Fabric **I** strip to each side of the **Center Block**. Sew (1) 3-1/2" x 36-1/2" Fabric **I** strip to the top and to the bottom of the **Center Block** to make the quilt top.

**FINISHING:** Layer quilt top, batting and backing together to form quilt sandwich. Baste and quilt as desired. Bind using (4) Fabric **J** 2-1/2" strips.

# Boudoir

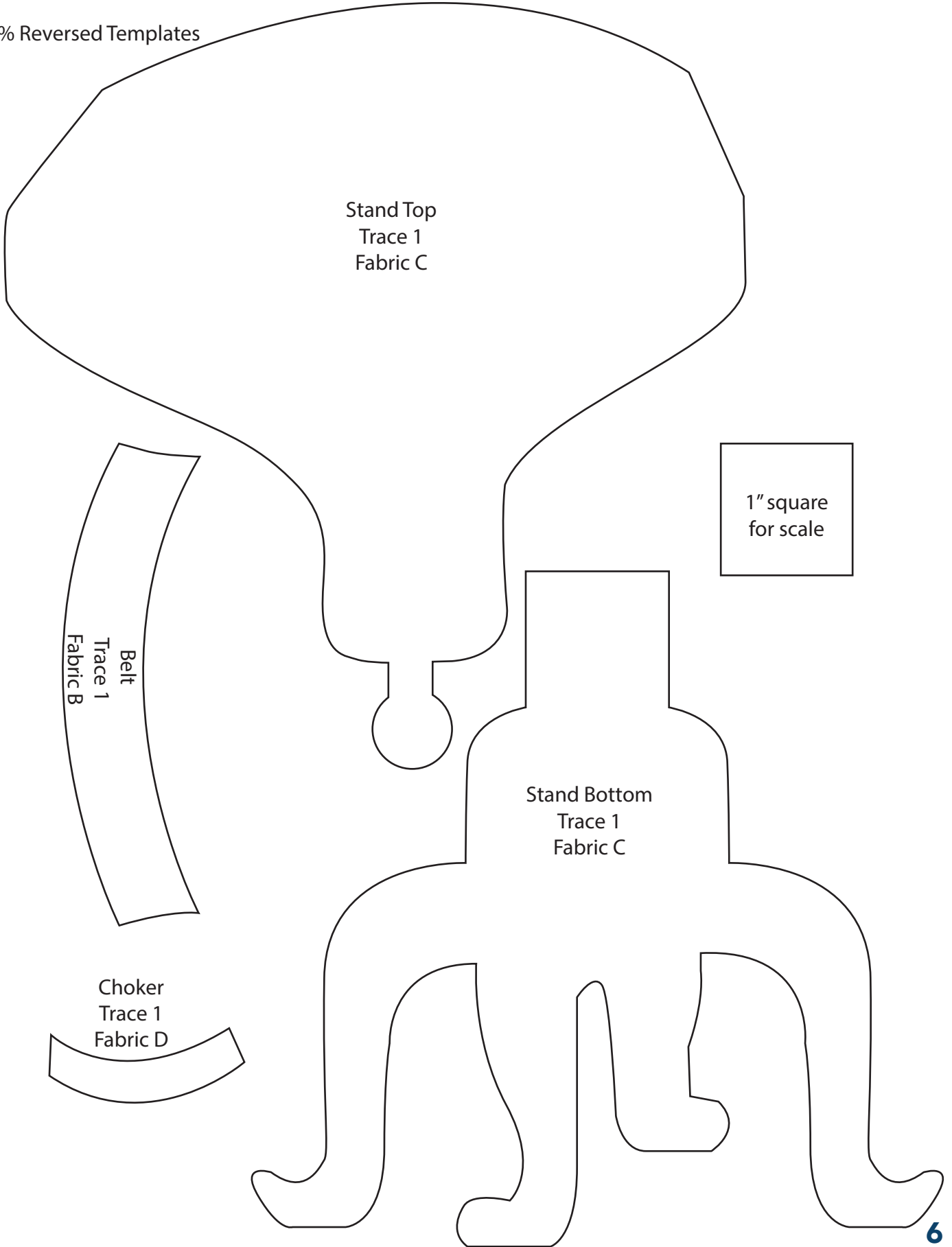


Quilt Layout



# Boudoir

100% Reversed Templates





# Boudoir

Dress Template  
ENLARGE 200%  
Fold Fabric right sides together and align  
the template on the fold line to cut 1 Dress  
Fabric A



Square should  
measure 1" AFTER  
enlarging templates  
200%

