

michael miller FABRICS

HAPPY HOLLY DAYS *Quilt*

Size: 40" x 51" | Design by: Marinda Stewart | Level: CONFIDENT BEGINNER



Free Pattern available on michaelmillerfabrics.com



FABRIC REQUIREMENTS



CX8387 Garland
Poinsettia in the Snow
5/8 yard



CX8387 Winter
Poinsettia in the Snow
Fat 1/8



CX8389 Garland
Holly Day Plaid
1/6 yard



CX8389 Winter
Holly Day Plaid
3/8 yard



CX8388 Garland
Holly Day Garland
1/4 yard



CX8388 Winter
Holly Day Garland
1/4 yard



CX4571 Garland
Boughs of Holly
1/4 yard



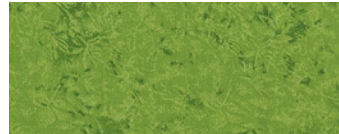
CX4571 Winter
Boughs of Holly
5/8 yard



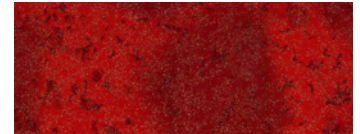
K1156 (Loden)
Krystal
5/8 yard



K2149 (Cranberry)
Krystal
1/8 yard



CM0376 Celadon
Fairy Frost
Fat 1/8



CM0376 Hollyberry
Fairy Frost
Fat 1/8

Kit Info	12 Kits	24 Kits
CX8387 Garland	7 1/2 yards (1 bolt)	15 yards (1 bolt)
CX8387 Winter	1 1/2 yards (1 bolt)	3 yards (1 bolt)
CX8389 Garland	2 yards (1 bolt)	4 yards (1 bolt)
CX8389 Winter	4 1/2 yards (1 bolt)	9 yards (1 bolt)
CX8388 Garland	3 yards (1 bolt)	6 yards (1 bolt)
CX8388 Winter	3 yards (1 bolt)	6 yards (1 bolt)
CX4571 Garland	3 yards (1 bolt)	6 yards (1 bolt)
CX4571 Winter	7 1/2 yards (1 bolt)	15 yards (1 bolt)
K1156 (Loden)	7 1/2 yards (1 bolt)	15 yards (2 bolt)
K2149 (Cranberry)	1 1/2 yards (1 bolt)	3 yards (1 bolt)
CM0376 Celadon	1 1/2 yards (1 bolt)	3 yards (1 bolt)
CM0376 Hollyberry	1 1/2 yards (1 bolt)	3 yards (1 bolt)
OPTIONAL: CX8388 Garland (For Backing)	19 1/2 yards (2 bolt)	39 yards (3 bolts)

Happy Holly

Quilt designed by Marinda Stewart

Size: Approximately 40" x 51"

Skill Level: Confident Beginner

Fabrics	Yardage	Cutting
CX8387 Garland Poinsettia in the Snow	5/8 yard	(2) 4 1/2" x 43 1/2" (2) 4 1/2" x 40 1/2"
CX8387 Winter Poinsettia in the Snow	Fat 1/8	(2) 6" x 6" squares
CX8389 Garland Holly-Day Plaid	1/6 yard *	(16) 2 1/8" squares Fussy cut. Center on motifs.
CX8389 Winter Holly-Day Plaid	3/8 yard	(10) 6" x 6" squares
CX8388 Garland Holly-Day Garland	1/4 yard	(10) 6" x 6" squares
CX8388 Winter Holly-Day Garland	1/4 yard	(2) 1 3/4" x 28" (2) 1 3/4" x 41 1/2"
CX4571 Garland Boughs of Holly	1/4 yard	(24) 3 1/2" squares Subcut diagonally into (48) triangles
CX4571 Winter Boughs of Holly	5/8 yard	(17) 6" x 6" squares
K1156 (Loden) Krystal	5/8 yard	(2) 1 1/2" x 41 1/2" (2) 1 1/2" x 34 1/2" (5) 2 1/2" x W.O.F. - binding
K2149 (Cranberry) Krystal	1/8 yard	(11) 3 1/2" squares Subcut diagonally into (22) triangles
CM0376 Celadon Fairy Frost	Fat 1/8	(8) 3 1/2" squares Subcut diagonally into (16) triangles
CM0376 Hollyberry Fairy Frost	Fat 1/8	(11) 3 1/2" squares Subcut diagonally into (22) triangles
OPTIONAL Backing CX8388 Garland Holly-Day Garland	1 5/8 yard	Backing
Also Needed: 45" x 58" batting, threads to match, scissors, straight pins, rotary cutter, acrylic ruler, mat, and fusible web.		
<p>* Or amount needed to get (16) 2 1/8" squares centered on motif (a holly bough surrounded by red plaid on 4 sides).</p> <p>1/6 yard is needed. When cutting for kits it is necessary to begin at the correct place in order to get a standard repeat and make the best use of the fabric.</p>		

Directions:

1. To make one 6" x 6" square within a square block – place one 3 ½" triangle right sides together across one corner of a CX4571 Winter 6" square. Sew diagonally across the edge of the triangle, press triangle up. Remove excess CX4571 fabric from the back. Repeat for each corner. Make the following combinations:

1) CX4571 Winter 6" square with (4) CX4571 Garland 3 ½" right square triangles (RST for short) on each corner. Make (7).

2) CX4571 Winter 6" square – (1) corner CM0376 Hollyberry, (2) adjacent corners – K2149, opposite corner (1) CM0376 Celadon. Make (2).

3) CX4571 Winter 6" square – (1) corner K2149, (2) adjacent corners – CM0376 Hollyberry, opposite corner CM0376 Celadon. Make (2).

4) CX4571 Winter 6" square – (2) corners on one side K2149 and CM0376 Hollyberry, (2) corners on opposite side CM0376 Celadon. Make (6).

5) CX8389 Winter 6" square – Repeat corner placement in combo #4. Make (10). Set all aside.

2. Following manufacturer's directions iron CX8389 Garland 2 1/8" fussy cut squares onto the fusible web. Cut out. Center (10 2 1/8" square on point in the middle of one CX8388 Garland 6" square. Machine satin stitch in place on all sides using red thread. Make (6). Set aside.

3. Repeat step #2 using CX8389 2 1/8" squares. Applique in the center of combo #2, #3, #4 as shown. Make (10) total.

4. To assemble the quilt: Make rows. Join rows together in the order sewn.

Row#1 – combo #2, #5, #4, #5, #3. Keep the red on top.

Row#2 - #5 (red edge on left side), CX8388 6" square, #1, CX8388 – 6" square, #5 (red edge on right side)

Row#3 - #3 (red edge on left side), #1, CX8387 Winter 6" square, #1, #3 (red edge on right side).

Row#4 - Repeat row #2

Row#5 – Repeat row #3

Row#6 - Repeat row #2

Row#7 – combo #3, #5, #4, #5, #2 (red edge on the bottom) as shown.

5. Sew one CX8388 Winter 1 ¾" x 28" piece to the top and bottom of the quilt. Sew one CX8388 Winter 1 ¾" x 41 ½" piece to each side.

6. Sew one K1156 1 ½" x 41 ½" piece to each side. Sew one K1156 1 ½" x 34 ½" piece to the top and bottom of the quilt.

7. Sew one CX8387 Garland 4 ½" x 43 ½" piece to each side of the quilt Sew one CX8387 Garland 4 ½" x 40 ½" piece to the top and bottom.
8. Layer backing CX8388 Garland, 45" x 58" batting, and quilt top. Baste.
9. Quilt as desired.
10. Bind quilt using K1156 2 ½" strips pieced together for length as needed.

KIT INFO

Fabrics	12 Kits	24 Kits
CX8387 Garland	7 ½ yards (1) bolt	15 yards (1) bolt
CX8387 Winter	1 ½ yards (1) bolt	3 yards (1) bolt
*CX8389 Garland	2 yards (1) bolt	4 yards (1) bolt
CX8389 Winter	4 1/2 yards (1) bolt	9 yards (1) bolt
CX8388 Garland	3 yards (1) bolt	6 yards (1) bolt
CX8388 Winter	3 yards (1) bolt	6 yards (1) bolt
CX4571 Garland	3 yards (1) bolt	6 yards (1) bolt
CX4571 Winter	7 ½ yards (1) bolt	15 yards (1) bolt
K1156 Loden	7 ½ yards (1) bolt	15 yards (2) bolt
K2149 Cranberry	1 ½ yards (1) bolt	3 yards (1) bolt
CM0376 Celadon	1 ½ yards (1) bolt	3 yards (1) bolt
CM0376 Hollyberry	1 ½ yards (1) bolt	3 yards (1) bolt
OPTIONAL BACKING CX8388 Garland	19 ½ yards (2) bolts	39 yards (3) bolts