

michael miller FABRICS

# PARADISO Quilt

Size: 40" x 58" | Design by: Marinda Stewart | Level: CONFIDENT BEGINNER

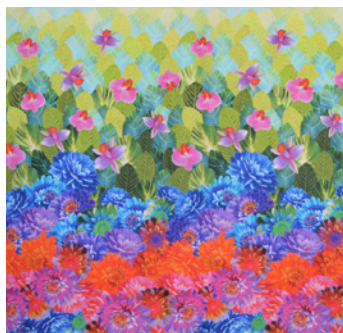


Free Pattern available on [michaelmillerfabrics.com](http://michaelmillerfabrics.com)





# FABRIC REQUIREMENTS



DDC8430 Multi  
Paradiso  
1 yard



PC6500 Multi  
Flower Fields  
1 yard



CX6574 Grape  
Little Stripe  
Fat 1/8



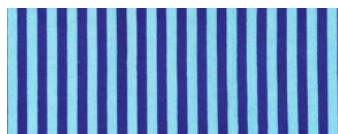
CX6574 Candy  
Little Stripe  
Fat 1/8



SC5333 Asparagus  
Cotton Couture  
Fat 1/4



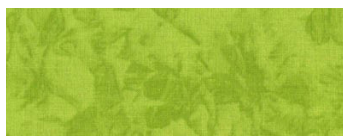
K4287 Luna  
Krystal  
7/8 yard



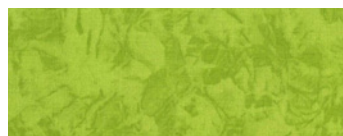
CX6574 Blueberry  
Little Stripe  
Fat 1/8



CX6574 Limeade  
Little Stripe  
Fat 1/8



K4058 Kiwi  
Krystal  
1/8 yard



K4058 Kiwi  
Krystal (optional backing)  
1 3/4 yards



CX6574 Lipstick  
Little Stripe  
Fat 1/8



CX6574 Sunny  
Little Stripe  
Fat 1/8

Kit Info	12 Kits	24 Kits
DDC8430 Multi	12 yards (1) bolt	24 yards (2) bolts
PC6500 Multi	12 yards (1) bolt	24 yards (2) bolts
K4287 Luna	10 1/2 yards (2) 10 yard bolts	21 yards (3) 10 yard bolts
K4058 Kiwi	1 1/2 yards (1) bolt	3 yards (1) bolt
SC5333 Asparagus	3 yards (1) bolt	6 yards (1) bolt
CX6574 Lipstick	1 1/2 yards (1) bolt of each	3 yards (1) bolt
CX6574 Grape		
CX6574 Candy		
CX6574 Blueberry		
CX6574 Limeade		
CX6574 Sunny		
OPTIONAL: K4058 Kiwi (For Backing)	21 yards (3) 10 yard bolts	42 yards (5) 10 yard bolts

Paradiso Quilt  
Quilt Designed by Marinda Stewart  
Size Approximately: 40" W x 58" H  
Skill Level: Confident Beginner

The Flowers and leaves used for the applique were randomly cut from DCX8430. All of the fabric was used. Leaves were cut large and small and fit to the area. This arrangement is very free-form and loose. Use the photo for inspiration. Do not expect an exact copy. Applique can be hand or machine finished. Buttonhole stitch was used for stems. Satin stitch was used for all else.

Fabrics	Yardage	Cutting
DDC8430 Multi Paradiso	1 yard	(1) 23 1/2" W x 41 1/2" H Balance of fabric used for fussy cutting
PC6500 Multi Flower Fields	1 yard	(5) 1 1/2" W x 36' H * Border ** (5) 2 1/2" W x 36' H * Binding **
K4287 Luna Krystal	7/8 yard	(2) 5 1/2" x 40 1/2" (2) 5 1/2" x 48 1/2"
K4058 Kiwi Krystal	1/8 yard	(2) 1" x 23 1/2" (2) 1" x 42 1/2"
SC5333 Asparagus Cotton Couture	Fat 1/4	(5) yards x 1 1/4" bias
CX6574 Lipstick Little Stripe	Fat 1/8	2 1/2" square  (12 Lipstick (12) Grape (12) Candy (12) Blueberry (11) Sunny (11) Limeade
CX6574 Grape Little Stripe	Fat 1/8	
CX6574 Candy Little Stripe	Fat 1/8	
CX6574 Blueberry Little Stripe	Fat 1/8	
CX6574 Limeade Little Stripe	Fat 1/8	

CX6574 Sunny Little Stripe	Fat 1/8	
Optional Backing K4058 Kiwi Krystal	1 3/4 yards	Backing
<b>Also Needed:</b> 45" x 64" batting, threads to match, scissors, straight pins, rotary cutter, mat, iron-on tear-away stabilizer, and fusible web.		
* Fabric is cut parallel to the selvage ** Pieced for length		

Directions:

1. Sew one K4058 1" x 23 1/2" piece to the top and bottom of the DDC8430 panel. Sew one K4058 1" x 42 1/2" to each sides.
2. Sew together 2 each of the CX6574 2 1/2" squares in a 'rainbow' repeat: (1) Sunny, (1) Limeade, (1) Blueberry, (1) Grape, (1) Candy, and (1) Lipstick, repeat for (12) 2 1/2" squares. Make (2). Sew one to the top and one to the bottom of the panel. Repeat process using (23) squares for each side. Sew to the panel as shown.
3. Sew one PC6500 1 1/2" x 24 1/2" piece to the top and bottom of the panel. Piece the remaining PC6500 1 1/2" x 36" strips to make (2) 1 1/2" x 48 1/2" strips. Sew one to each side of the quilt.
4. Sew one K4287 Luna 5 1/2" x 48 1/2" strip, piece for length to each side of the quilt. Sew one 5 1/2" x 40 1/2" K4287 Luna piece to the top and bottom of the quilt.
5. Following manufacturer's directions, iron fusible web onto the wrong side of the remaining DDC8450 piece of fabric. Fussy cut flowers and leaves as desired. Some leaves were cut smaller than the fabric print to create a complete leaf shape with veins. The applique design is free-form so there is room for individuality. Save some pieces to use as butterfly wings (see pattern pieces) - 3 were made - (1) Purple, (1) Orange, (1) Blue. Set aside.
6. Cut enough SC5333 1 1/4" bias strips to piece together 5 yards total. Fold under 3/8" on each side and press. Arrange stems a shown or as desired. Pin in place. Stitch to the quilt as desired. A machine buttonhole stitch was used for this. 5-7 branches were made.
7. Remove paper backing from fussy cut flowers and leaves. Arrange on branches as desired. Press in place. Hand or machine stitch in place. Machine satin stitch was used for this quilt. Iron-on tear-away stabilizer was ironed onto the wrong side of the quilt before stitching to stabilize the fabric. This improves the quality of the stitching and reduces any distortion of the

fabric. Remove all traces of the stabilizer after stitching. Add butterfly wings as shown. Stitch in place. Satin stitch a butterfly body down the center of each butterfly. Add straight stitch antennae to finish.

8. Layer CX4058 Kiwi backing batting, and quilt top. Baste.
9. Quilt as desired.
10. Bind quilt using PC6500 2 1/2" x 36" strip, pieced as needed for length.

#### Kit Info

Fabrics	(12) Kits	(24) Kits
DDC8430 Multi	12 yards (1) bolt	24 yards (2) bolts
PC6500 Multi	12 yards (1) bolt	24 yards (2) bolts
K4287 Luna	10 1/2 yards (2) 10 yard bolts	21 yards (3) 10 yard bolts
K4058 Kiwi	1 1/2 yards (1) bolt	3 yards (1) bolt
SC5333 Asparagus	3 yards (1) bolt	6 yards (1) bolt
CX6574 Lipstick	1 1/2 yards (1) bolt of each	3 yards (1) bolt of each
CX6574 Grape		
CX6574 Candy		
CX6574 Blueberry		
CX6574 Limeade		
CX6574 Sunny		
Optional Backing K4058 Kiwi	21 yards (3) 10 yard bolts	42 yards (5) 10 yard bolts

# "Paradisio" Quilt

## Butterfly Pattern

