

michael miller FABRICS

ELDERBERRY FLOWER FAIRIES COLLAGE

Size: 42" x 55" | Design by: Marinda Stewart | Level: CONFIDENT BEGINNER



Free Pattern available on michaelmillerfabrics.com



FABRIC REQUIREMENTS



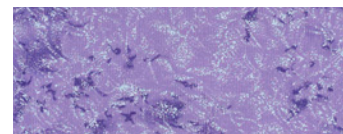
DDC8059 Multi
Elderberry FF Collage
1 1/6 yards



DDC8060 Pink
Elderberry FF Tossed
Fat 1/8



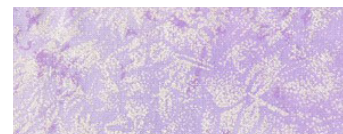
CJ2517 Blue
Clouds
3/8 yard



CM0376 Fancy
Fairy Frost
1/4 yard



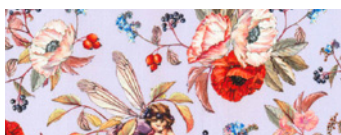
K1075 (Lilac)
Krystal
Fat 1/8



CM0376 Orchid
Fairy Frost
Fat 1/8



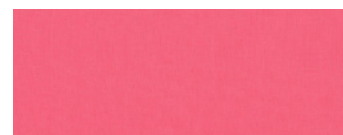
DDC8063 Lavender
Elderberry Geo
Fat 1/8



DDC8060 Lavender
Elderberry FF Tossed
1/4 yard



DDC8062 Flower
Blossom Confetti
1/6 yard



SC5333 Petal
Cotton Couture
1/6 yard

Kit Info	12 Kits	24 Kits
DDC8059 Multi	14 yards or (1) bolts	28 yards or (2) bolts
CJ2517 Blue	4 1/2 yards or (1) bolt	9 yards or (1) bolt
CM0376 Fancy	3 yards or (1) bolt	6 yards or (1) bolt
K1075 (Lilac)	1 1/2 yards or (1) bolt	3 yards or (1) bolt
CM0376 Orchid	1 1/2 yards or (1) bolt	3 yards or (1) bolt
DDC8063 Lavender	1 1/2 yards or (1) bolt	3 yards or (1) bolt
DDC8060 Lavender	3 yards or (1) bolt	6 yards or (1) bolt
DDC8062 Flower	2 yards or (1) bolt	4 yards or (1) bolt
SC5333 Petal	2 yards or (1) bolt	4 yards or (1) bolt
DDC8063 Coral	1 1/2 yards or (1) bolt	3 yards or (1) bolt
DDC8060 Pink	1 1/2 yards or (1) bolt	3 yards or (1) bolt
DDC8063 Navy	9 yards or (1) bolt	18 yards or (2) bolt
CX7296 Pink	1 1/2 yards or (1) bolt	3 yards or (1) bolt
OPTIONAL BACKING CX7296 Pink	19 1/2 yards or (2) bolt	39 yards or (3) bolts



DDC8063 Coral
Elderberry Geo
Fat 1/8



DDC8063 Navy
Elderberry Geo
3/4 yard



CX7296 Pink
Lilliana
1 5/8 yards

Elderberry Flower Fairies Collage

Quilt designed by Marinda Stewart

Skill Level: Confident Beginner

Size: Approximately 42" W x 55" H

Fabrics	Yardage	Cutting
DDC8059 Multi Elderberry Flower Fairies Collage	1 1/6 yards	(1) 28 1/2" W x 40 1/2" H
CJ2517 Blue Clouds	3/8 yard	(28) 3 1/2" background *
CM0376 Fancy Fairy Frost	1/4 yard	(2) 1 1/2" x 40 1/2" (2) 1 1/2" x 30 1/2" (4) 1 1/2" x 5 1/2"
K1075 Lilac Krystal	Fat 1/8	(7) 3" wedges *
CM0376 Orchid Fairy Frost	Fat 1/8	(7) 3" wedges *
DDC8063 Lavender Elderberry Geo	Fat 1/8	(7) 3" wedges *
DCC8060 Lavender Elderberry Flower Fairies Tossed	1/4 yard	(2) 21 1/2" x 5 1/2" (7) wedges *
DDC8062 Flower Blossom Confetti	1/6 yard	(4) 10" x 5 1/2"
SC5333 Petal Cotton Couture	1/6 yard	(2) 1" x 42 1/2" (7) wedges *
DDC8063 Coral Elderberry Geo	Fat 1/8	(7) wedges *
DDC8060 Pink Elderberry Flower Fairies Tossed	Fat 1/8	(7) wedges *
DDC8063 Navy Elderberry Geo	3/4 yard	(2) 1 1/2" x 42 1/2" (5) 2 1/2" x W.O.F. (28) background *
CX7296 Pink Lilliana	Fat 1/8	(7) wedges *
OPTIONAL BACKING CX7296 Pink Lilliana	1 5/8 yards	Backing
Also Needed: Batting 45" x 60", scissors, straight pins, thread to match, rotary cutter, acrylic ruler, and mat.		
* See Pattern		

Directions:

1. Sew one CM0376 Fancy 1 ½" x 40 ½" piece to each side of DDC8059 28 ½" W x 40 ½" H panel. Sew one CM0376 Fancy 1 ½" x 30 ½" piece to the top and bottom of the panel. Set aside.
2. To make (1) 3 ½" square drunkard's path unit – clip the inside curve of one background piece. With right sides together, ease in (1) 3" wedge piece. Sew curved seam. Press open. Make the following combinations:
 - a) (7) CJ2517 background and DDC8063 Coral wedge
 - b) (7) CJ2517 background and DDC8063 Lavender wedge
 - c) (7) CJ2517 background and SC5333 Petal wedge
 - d) (7) CJ2517 background and CM0376 Orchid wedge
 - e) (7) DDC8063 Navy background and K1075 wedge
 - f) (7) DDC8063 Navy background and DDC8060 Pink wedge
 - g) (7) DDC8063 Navy background and DDC8060 Lavender wedge
 - h) (7) DDC8063 Navy background and CX7296 Pink wedge
3. To make (1) 6 ½" block with (4) units from Step #2. Sew together (4) units in the following combinations as shown:

Combo #1 - B, D, F, H – Make (7)

Combo #2 - A, C, E, G – Make (7)

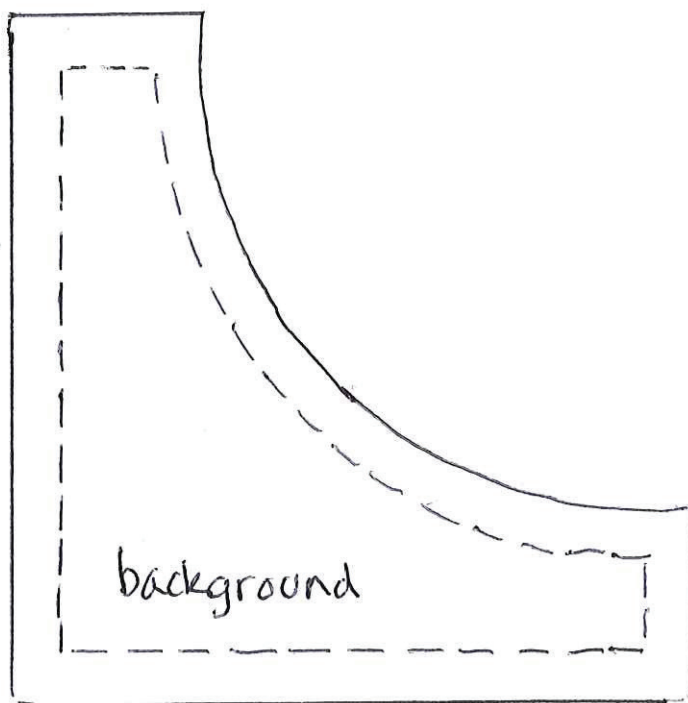
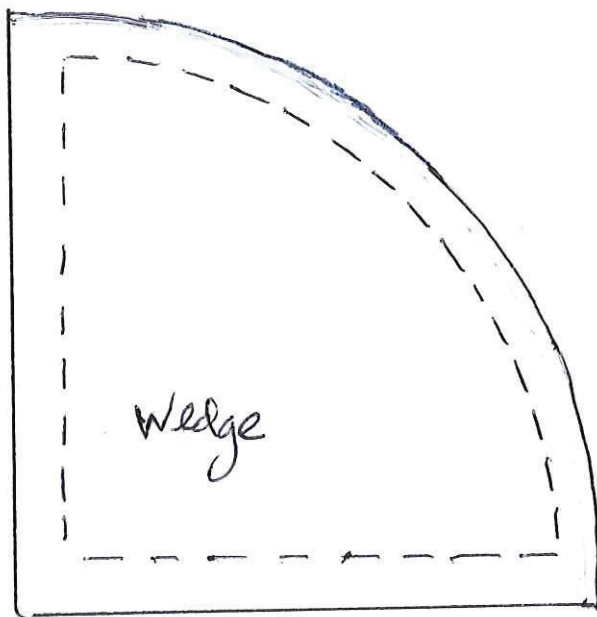
Keep the DDC8063 Navy and CJ2517 pieces on the same side of the block, as shown.
4. Sew together (4) combo #1 and (3) combo #2 alternating the blocks. Keep the DDC8063 Navy sides on one side of the strip. Sew to one side of the quilt with the DDC8063 Navy edge next to CM0376 Fancy as shown. Repeat using (3) combo #1 and (4) combo #2. Sew to the other side of the quilt.
5. Sew one DDC8063 Navy 1 ½" x 42 ½" piece to the top and bottom of the quilt.
6. Sew one SC5333 1" x 42 ½" piece to the top and bottom of the quilt.
7. Sew one CM0376 Fancy 1 ½" x 5 ½" piece to each end of one DDC8060 Lavender 5 ½" x 21 ½" piece. Make (2).
8. Sew one DDC8062 5 ½" x 10" piece to each end of the unit from Step #7. Make (2). Sew one panel to each end of the quilt.
9. Layer (Optional) CX7296 Pink 1 5/8 yard backing, batting, and quilt top. Baste.
10. Quilt as desired.
11. Bind quilt using DDC8063 Navy 2 ½" strips pieced as needed for length.

Kit Info

Fabrics	12 Kits	24 Kits
DDC8059 Multi	14 yards (1) bolt	28 yards (2) bolts
CJ2517 Blue	4 ½ yards (1) bolt	9 yards (1) bolt
CM0376 Fancy	3 yards (1) bolt	6 yards (1) bolt
K1075 Lilac	1 ½ yards (1) bolt	3 yards (1) bolt
CM0376 Orchid	1 ½ yards (1) bolt	3 yards (1) bolt
DDC8063 Lavender	1 ½ yards (1) bolt	3 yards (1) bolt
DDC8060 Lavender	3 yards (1) bolt	6 yards (1) bolt
DDC8062 Flower	2 yards (1) bolt	4 yards (1) bolt
SC5333 Petal	2 yards (1) bolt	4 yards (1) bolt
DDC8063 Coral	1 ½ yards (1) bolt	3 yards (1) bolt
DDC8060 Pink	1 ½ yards (1) bolt	3 yards (1) bolt
DDC8063 Navy	9 yards (1) bolt	18 yards (2) bolts
CX7296 Pink	1 ½ yards (1) bolt	3 yards (1) bolt
OPTIONAL BACKING CX7296 Pink	19 ½ yards (2) bolts	39 yards (3) bolts

"Elderberry Flower Fairies Collage" Quilt

PATTERNS



* Marinda ©2018