

michael miller FABRICS

# GLITTER CRITTERS

Size: Approx 42" Square | Design by: Marinda Stewart | Level: CONFIDENT BEGINNER

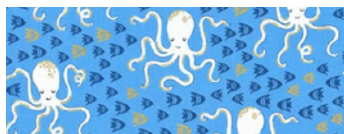


Free Pattern available on [michaelmillerfabrics.com](http://michaelmillerfabrics.com)





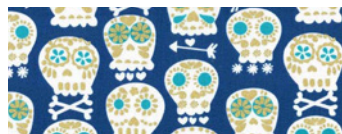
# FABRIC REQUIREMENTS



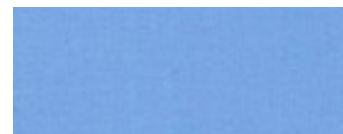
CM8045 Cornflower  
Octopi  
Fat 1/8



CM8044 Cadet  
Quills  
Fat 1/4



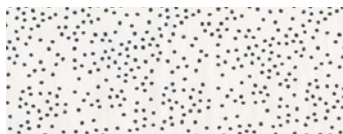
CM4425 Cadet  
Bonehead  
Fat 1/4



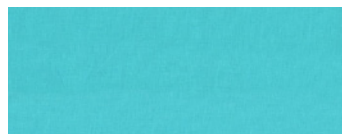
SC5333 Cornflower  
Cotton Couture  
1/4 yard



CM8051 Cornflower  
Little Spinners  
1/6 yard



DC7818 Marine  
Glade Glimmers  
1/4 yard



SC5333 Luna  
Cotton Couture  
1/8 yard



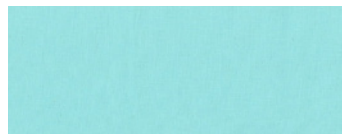
CM7380 Wave  
Just Right  
1/8 yard



CM8052 Cornflower  
Diamond Lil'  
1/8 yard



CM8044 Blue  
Quills  
1/4 yard



SC5333 Aqua  
Cotton Couture  
3/8 yard



SC5333 Isle  
Cotton Couture  
Fat 1/8



CM8045 Aqua  
Octopi  
3/8 yard



CM8045 Denim  
Octopi  
3/8 yard



CM7380 Luna  
Just Right  
6" x 11" piece



SC5333 Sailor  
Cotton Couture  
3/8 yard

	12 Kits	24 Kits
CM8045 Cornflower	1 1/2 yards (1 bolt)	3 yards (1 bolt)
CM8044 Cadet	3 yards (1 bolt)	6 yards (1 bolt)
CM4425 Cadet	3 yards (1 bolt)	6 yards (1 bolt)
SC5333 Cornflower	3 yards (1 bolt)	6 yards (1 bolt)
CM8051 Cornflower	2 yards (1 bolt)	4 yards (1 bolt)
DC7818 Marine	3 yards (1 bolt)	6 yards (1 bolt)
SC5333 Luna	1 1/2 yards (1 bolt)	3 yards (1 bolt)
CM7380 Wave	1 1/2 yards (1 bolt)	3 yards (1 bolt)
CM8052 Cornflower	1 1/2 yards (1 bolt)	4 yards (1 bolt)
CM8044 Blue	3 yards (1 bolt)	6 yards (1 bolt)
SC5333 Aqua	4 1/2 yards (1 bolt)	9 yards (1 bolt)
SC5333 Isle	1 1/2 yards (1 bolt)	3 yards (1 bolt)
CM8045 Aqua	4 1/2 yards (1 bolt)	9 yards (1 bolt)
CM8045 Denim	4 1/2 yards (1 bolt)	9 yards (1 bolt)
CM7380 Luna	1/2 yard (1 bolt)	1 yard (1 bolt)
SC5333 Sailor	4 1/2 yards (1 bolt)	9 yards (1 bolt)
Optional Backing: CM8045 Cornflower	15 yards (1 bolts)	30 yards (2 bolts)

# Glitter Critters

Quilt by Marinda Stewart

Size: 42" Square

Skill Level: Confident Beginner

Fabrics	Yardage	Cutting
CM8045 Cornflower Octopi	Fat 1/8	(5) 4 1/2" squares
CM8044 Cadet Quills	Fat 1/4	(7) 3" squares (10) 2" squares
CM4425 Cadet Bonehead	Fat 1/4	(7) 3" squares (10) 2" squares
SC5333 Cornflower Cotton Couture	1/4 yard	(10) 1 1/2" x 8 1/2" (10) 1 1/2" x 10 1/2"
CM8051 Cornflower Little Spinners	1/6 yard	(14) 3" squares (4) 1 1/2" x 8 1/2"
DC7818 Marine Glade Glimmers	1/4 yard	(20) 2 1/2" x 4 1/2"
SC5333 Luna Cotton Couture	1/8 yard	(8) 4 1/2" squares Background (see pattern)
CM7380 Wave Just Right	1/8 yard	(8) 4" squares 1/4 circle (see pattern)
CM8052 Cornflower Diamond Lil	1/8 yard	(4) 3 1/2" x 8 1/2" * **
CM8044 Blue Quills	1/4 yard	(8) 1 1/2" x 8 1/2" (8) 1 1/2" x 10 1/2"
SC5333 Aqua Cotton Couture	3/8 yard	(24) 1 1/2" x 10 1/2"
SC5333 Isle Cotton Couture	Fat 1/8	(16) 1 1/2" square
CM8045 Aqua Octopi	3/8 yard	(4) 2 1/2" x 34 1/2"
CM8045 Denim Octopi	3/8 yard	(4) 2 1/2" x 34 1/2"
CM7380 Luna Just Right	6" x 11" piece	(8) 2 1/2" squares
SC5333 Sailor Cotton Couture	3/8 yard	(4) 2 1/2" x W.O.F. for binding
<b>OPTIONAL BACKING:</b> CM8045 Cornflower Octopi	1 1/4 yard	Backing
Also Needed: 45" x 45" batting, scissors, straight pins, thread to match, scissors, straight pins, rotary cutter, acrylic ruler, and mat.		
* Or amount needed for one repeat		

Directions:

1. For Block #1 – place one CM8044 Cadet 2" square right sides together on the upper right corner of one CM8045 Cornflower 4 ½" square. Sew diagonally across the corner. Press. Trim excess from the back. Repeat on the lower left corner. Repeat on the two remaining corners using CM4425 2" squares. Make (5) total. Set aside. Place one CM8044 Cadet 3" square right sides together on top of one CM8051 3" square. Draw a diagonal line from corner to corner. Stitch ¼" on each side of the drawn line. Cut apart on the drawn line. Press. Yield – (2) right square triangles or RST. Trim each to an accurate 2 ½" square. Make (14) 2 ½" squares with CM8044 and CM8051. Make (14) 2 ½" squares with CM4425 and CM8051. Set aside. To assemble one block – Sew one CM4425/CM8051 RST to one DC7818 2 ½" x 4 ½" piece. End with a CM8044 Cadet/CM8051 RST. Make (2). Reverse position of the 2 ½" squares on second DC7818 2 ½" x 4 ½" piece. Sew one DC7818 2 ½" x 4 ½" piece to each side of CM8045 Cornflower 4 ½" square. Sew one 2 ½" x 8 ½" pieced row to the top and bottom of the 4 ½" x 8 ½" center row. Make (5) blocks total. Sew one SC5333 Cornflower 1 ½" x 8 ½" piece to the top and bottom of each block. Sew one SC5333 Cornflower 1 ½" x 10 ½" piece to each side. Set aside.
2. Block #2 – For one ¼ circle block, carefully clip curves on SC5333 Luna background piece and CM7380 Wave ¼ circle piece. Pin in place easing in fullness. Stitch. Press. Make (8) total. To assemble block – sew together (2) ¼ circle blocks as shown, to make (1) 4 ½" x 8 ½" half circle piece. Sew one CM8052 3 ½" x 8 ½" piece to the top of the half circle unit. Sew one CM8051 1 ½" x 8 ½" piece to the top of CM8052. Make (4) total. Sew one CM8044 Blue 1 ½" x 8 ½" piece to the top and bottom of block. Sew one CM8044 Blue 1 ½" x 10 ½" piece to each side. Set aside.
3. For sashing – begin and end with one SC5333 Isle 1 ½" square alternating with (3) SC5333 Aqua 1 ½" x 10 ½" piece as shown. Make (4) strips. Set aside. For ROWS #1 and #3 – Begin and end with an SC5333 Aqua 1 ½" x 10 ½" piece alternating with Block #1, Block #2, and Block #1. Make two rows. Set aside. Row #2 – Repeat row sequence using Block #2, Block #1, Block #2. Place each half circle block facing to the center of the quilt as shown. To assemble the quilt begin and end with a 1 ½" x 34 ½" sashing strip alternating with rows #1, #2, and #3 as shown. Refer to photo for exact placement. Quilt top should measure 34 ½" x 34 ½".
4. Sew one CM8045 Aqua 2 ½" x 34 ½" piece to the top and bottom of the quilt. Sew one CM8045 Denim 2 ½" x 34 ½" piece to the top and bottom of the quilt. Set aside.
5. For the cornerstones – sew together (2) CM7380 Luna 2 ½" squares in a checkerboard pattern using (1) CM4425/CM8051 2 ½" square and (1) CM8044 Cadet/CM8051 2 ½" square with the white corners meeting in the center. Make (4) total.
6. Sew one CM8045 Aqua 2 ½" x 34 ½" piece to one CM8045 Denim 2 ½" x 34 ½" piece. Make (2) Sew one 4 ½" cornerstone to the top and bottom of each piece. Sew one strip to each side of the quilt to finish the top.
7. Layer, backing (CM8045 Cornflower), batting, and quilt top. Baste.
8. Quilt as desired.
9. Bind quilt using SC5333 Sailor 2 ½" strips pieced as needed for length.

Kit Info

	12 Kits	24 Kits
CM8045 Cornflower	1 1/2 yards or (1) bolt	3 yards or (1) bolt
CM8044 Cadet	3 yards or (1) bolt	6 yards or (1) bolt
CM4425 Cadet	3 yards or (1) bolt	6 yards or (1) bolt
SC5333 Cornflower	3 yards or (1) bolt	6 yards or (1) bolt
CM8051 Cornflower	2 yards or (1) bolt	4 yards or (1) bolt
DC7818 Marine	3 yards or (1) bolt	6 yards or (1) bolt
SC5333 Luna	1 1/2 yards or (1) bolt	3 yards or (1) bolt
CM7380 Wave	1 1/2 yards or (1) bolt	3 yards or (1) bolt
CM8052 Cornflower	1 1/2 yards or (1) bolt	3 yards or (1) bolt
CM8044 Blue	3 yards or (1) bolt	6 yards or (1) bolt
SC5333 Aqua	4 ½ yards or (1) bolt	9 yards or (1) bolt
SC5333 Isle	1 1/2 yards or (1) bolt	3 yards or (1) bolt
CM8045 Aqua	4 ½ yards or (1) bolt	9 yards or (1) bolt
CM8045 Denim	4 ½ yards or (1) bolt	9 yards or (1) bolt
CM7380 Luna	½ yard or (1) bolt	1 yard or (1) bolt
SC5333 Sailor	4 ½ yards or (1) bolt	9 yards or (1) bolt
OPTIONAL BACKING CM8045 Cornflower	15 yards or (1) bolt	30 yards or (2) bolts

# "Glitter Critters" Quilt PATTERNS

