

michael|miller FABRICS

SHEEP TO SHORE Quilt

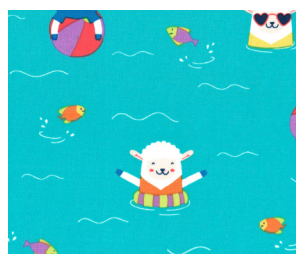
SIZE 40"W X 44"H | LEVEL ADVANCED BEGINNER | PATTERN BY HEIDI PRIDEMORE



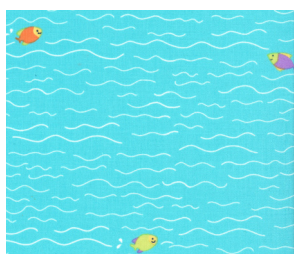
FREE PATTERN AVAILABLE ON MICHAELMILLERFABRICS.COM

FABRIC REQUIREMENTS

WE DO OUR BEST TO MAKE SURE THESE ARE ACCURATE YARDAGES
BUT THESE ARE ESTIMATES UNTIL THE FINAL PATTERN IS COMPLETED AND EDITED. THANK YOU.



CX8312 TURQUOISE
1/2 YARD
BAA BAA BOBBING



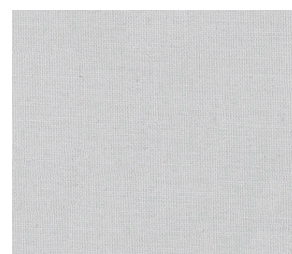
CX8311 AQUA
1/4 YARD
FISH AND DIP



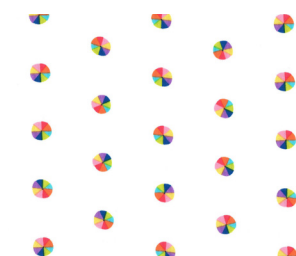
SC5333 CREAM
1/2 YARD
COTTON COUTURE



SC5333 TAN
1/2 YARD
COTTON COUTURE



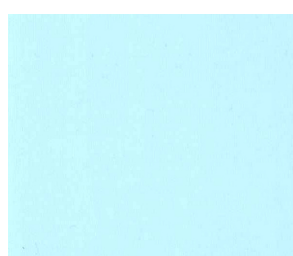
SC5333 NICKEL
1/8 YARD
COTTON COUTURE



CX8310 SUMMER
3/4 YARD
BEACH BALL BINGO



CX1065 LIPSTICK
1/2 YARD
GARDEN PINDOT



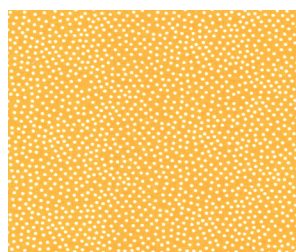
SC5333 CLOUD
1/2 YARD
COTTON COUTURE



CX1065 BERRY
1/4 YARD
GARDEN PINDOT



CX1065 ORANGE
1/4 YARD
GARDEN PINDOT



CX1065 SUNSHINE
1/4 YARD
GARDEN PINDOT



CX1065 WISTERIA*
2/3 YARD
GARDEN PINDOT



CX7229 SUMMER
1/2 YARD
CATCHING RAYS



(BACKING) CX8309 SUMMER
2-3/4 YARDS
SHEEP ON SHORE

FABRIC REQUIREMENTS

SKU	YARDAGE PER ONE QUILT	# OF BOLTS FOR 12 KITS	# OF BOLTS FOR 24 KITS
(A) CX8312-TURQUOISE	1/2 YARD	1 BOLT (6 YARDS)	1 BOLT (12 YARDS)
(B) CX8311-AQUA	1/4 YARD	1 BOLT (3 YARDS)	1 BOLT (6 YARDS)
(C) SC5333-CREAM	1/2 YARD	1 BOLT (6 YARDS)	1 BOLT (12 YARDS)
(D) SC5333-TAN	1/2 YARD	1 BOLT (6 YARDS)	1 BOLT (12 YARDS)
(E) SC5333-NICKEL	1/8 YARD	1 BOLT (1-1/2 YARDS)	1 BOLT (3 YARDS)
(F) CX8310-SUMMER	3/4 YARD	1 BOLT (9 YARDS)	2 BOLTS (18 YARDS)
(G) CX1065-LIPSTICK	1/2 YARD	1 BOLT (6 YARDS)	1 BOLT (12 YARDS)
(H) SC5333-CLOUD	1/2 YARD	1 BOLT (6 YARDS)	1 BOLT (12 YARDS)
(I) CX1065-BERRY	1/4 YARD	1 BOLT (3 YARDS)	1 BOLT (6 YARDS)
(J) CX1065-ORANGE	1/4 YARD	1 BOLT (3 YARDS)	1 BOLT (6 YARDS)
(K) CX1065-SUNSHINE	1/4 YARD	1 BOLT (3 YARDS)	1 BOLT (6 YARDS)
(L) CX1065-WISTERIA*	2/3 YARD	1 BOLT (8 YARDS)	2 BOLTS (16 YARDS)
(M) CX7229-SUMMER	1/2 YARD	1 BOLT (6 YARDS)	1 BOLT (12 YARDS)
(BACKING) CX8309-SUMMER	2-3/4 YARDS	3 BOLTS (33 YARDS)	5 BOLTS (66 YARDS)
TOTAL BOLTS NEEDED		16 BOLTS (13 W/O BACK)	20 BOLTS (15 W/O BACK)

*INCLUDES BINDING

"Sheep on Shore"

Quilt by Heidi Pridemore

Size: Approximately 40" x 44" Skill Level: Advanced Beginner

Materials

Cutting instructions

Please Note: All strips are cut across the width of fabric (WOF) from selvage to selvage edge unless otherwise noted.

	Fabric	Yardage	Cutting
(A)	CX8312-Turquoise Baa Baa Baby-Turquoise	½ yard	• Cut one 13" x 35" WOF strip.
(B)	CX8311-Aqua Fish and Dip-Aqua	¼ yard	• Cut one 6" x 35" WOF strip.
(C)	SC5333-Cream Cotton Couture-Cream	½ yard	• Cut one 6" x 35" WOF strip. • See instructions to cut one Sand piece.
(D)	SC5333-Khaki Cotton Couture-Khaki	½ yard	• Cut one 13" x 35" WOF strip.
(E)	SC5333-Nickel Cotton Couture-Nickel	⅛ yard	• See instructions to cut five umbrella poles.
(F)	CX8310-Summer Beach Ball Bingo-Summer	¾ yard	• Cut three 4 ½" x WOF strips. Sub-cut (19) 4 ½" squares. • See instructions to cut five Umbrellas.
(G)	CX1065-Lipstick Garden Pin Dot-Lipstick	½ yard	• Cut two 1 ½" x 34 ½" strips. • Cut two 1 ½" x 32 ½" strips. • See instructions to cut one Umbrella ruffle • See instructions to cut one Right Stripe • See instructions to cut one Middle Stripe • See instructions to cut one Left Stripe
(H)	SC5333-Cloud Cotton Couture-Cloud	½ yard	• Cut one 15" x 35" WOF strip.
(I)	CX1065-Berry Garden Pin Dot-Berry	¼ yard	• See instructions to cut one Right Stripe • See instructions to cut one Middle Stripe • See instructions to cut one Left Stripe
(J)	CX1065-Orange Garden Pin Dot-Orange	¼ yard	• See instructions to cut one Right Stripe • See instructions to cut one Middle Stripe • See instructions to cut one Left Stripe
(K)	CX1065-Sunshine Garden Pin Dot-Sunshine	¼ yard	• See instructions to cut four Umbrella ruffles • See instructions to cut one Right Stripe • See instructions to cut one Middle Stripe • See instructions to cut one Left Stripe
(L)	CX1065-Wisteria Garden Pin Dot-Wisteria	⅔ yard	• Cut five 2 ½" x WOF strips for the binding • See instructions to cut one Right Stripe • See instructions to cut one Middle Stripe • See instructions to cut one Left Stripe
(M)	CX7229-Summer Catching Rays-Summer	½ yard	• Cut three 4 ½" x WOF strips. Sub-cut (19) 4 ½" squares.
Backing	CX8309-Summer Sheep on Shore-Summer	2 ¾ yards	• Cut two 48" x WOF strips. Piece the strips together and trim to make the 48" x 52" pieced backing.

You will also need:

• 48" x 52" batting, fusible web, threads to match, scissors, straight pins, acrylic ruler, rotary cutter and mat.

Disclaimers

This pattern is provided as a courtesy to quilt stores, catalogs and quilters. Michael Miller Fabrics, LLC is not responsible for the accuracy of any kits packaged to accompany this pattern. Please direct any inquiries to the kit maker.

Yardage requirements for this pattern may allow for excess yardage to accommodate specific placement of motifs or to allow for any fussy-cutting to achieve the finished quilt design.

While every attempt has been made to give accurate measurements, yardage requirements and construction directions; this does not allow personal variations in measuring, cutting or sewing. The enclosed directions were used in the construction of the original quilt.

Block Assembly

1. Place (1) 6" x 35" Fabric B strip on a cutting table, right side up. Place (1) 13" x 35" Fabric A strip on the table, right side up overlapping the bottom of the Fabric B strip about 1" (Fig. 1).
2. Place pins through both layers of fabric to mark the edge of the bottom fabric and top fabric (Fig. 2).
3. Take a fabric pencil and draw a gentle curved line on the top fabric staying between the pins.
NOTE: The curve doesn't have to be very wavy. The wavier the curve the harder it is to sew.
4. Cut on the drawn line through both fabrics. Unpin the scraps from the fabric.
5. Pick up both pieces of fabric and place them right side together. **NOTE: They will be mirror images of each other and appear not to match, this is correct!** Slowly sew them together easing the curves together as you go to make the bottom of the Center Block (Fig. 3).

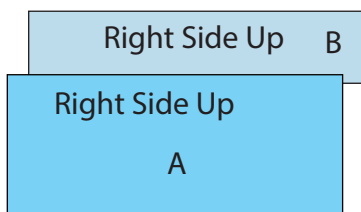


Fig. 1

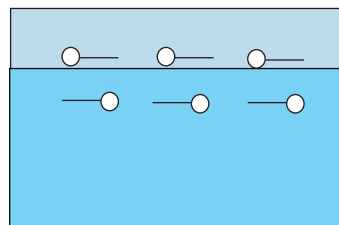


Fig. 2

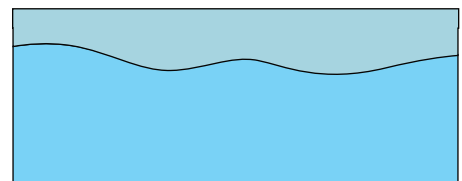


Fig. 3

6. Repeat Steps 1-5 to add the 6" x 35" Fabric C strip to the Fabric B side of the Center Block.
7. Repeat Steps 1-5 to add the 13" x 35" Fabric D strip to the Fabric C side of the Center Block.
8. Repeat Steps 1-5 to add the 15" x 35" Fabric H strip to the Fabric D side of the center block to complete the Center Block.
9. Trim the block to measure 30 1/2" x 34 1/2" (Fig. 4).

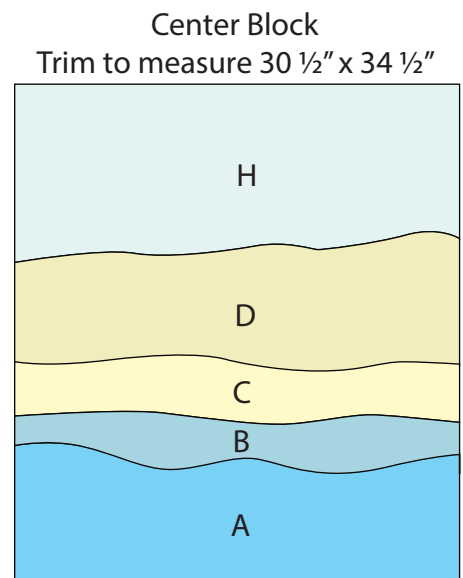


Fig. 4

10. Enlarge the Sand Template 400%.
11. Following the manufacturer's instructions, trace the listed number of each template onto the paper side of the fusible web. Roughly cut out each template about 1/8" outside the drawn lines.
12. Press each template onto the wrong side of the fabrics as listed on the templates. Cut out each template on the drawn lines.
13. Press the Sand piece to the center block, aligning the left side of the sand and the center block (Fig. 5).
14. Finish the raw edges of each shape with a decorative stitch such as a buttonhole or satin stitch.

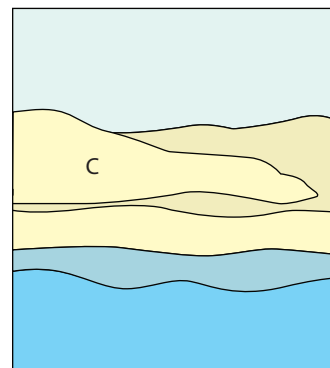


Fig. 5

Quilt Top Assembly

(Follow the Quilt Layout while assembling the quilt top.)

15. Sew one 1 1/2" x 34 1/2" Fabric G strip to each side of the Center Block. Sew one 1 1/2" x 32 1/2" Fabric G strip to the top and to the bottom of the Center Block (Fig. 6).
16. Sew together five 4 1/2" Fabric F squares and four 4 1/2" Fabric M squares, alternating them to make the left side border.
17. Sew together five 4 1/2" Fabric M squares and four 4 1/2" Fabric F squares, alternating them to make the right side border.
18. Sew together five 4 1/2" Fabric F squares and five 4 1/2" Fabric M squares, alternating them to make the top border. Repeat to make the bottom border.
19. Sew the side borders to the Center Block. Sew the top and bottom borders to the Center Block to make the quilt top (Fig. 7).

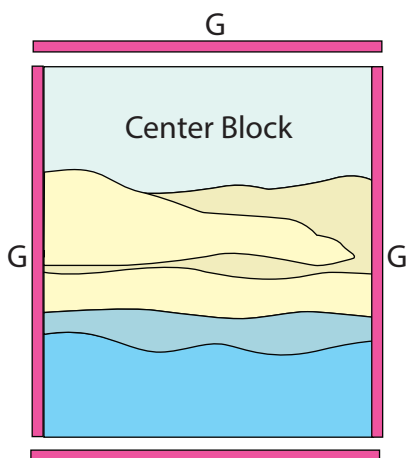


Fig. 6 G

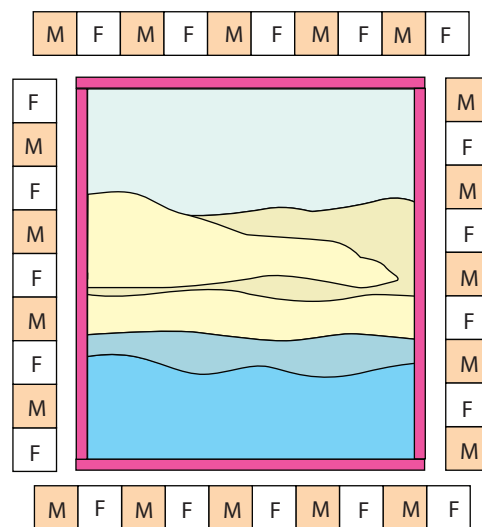
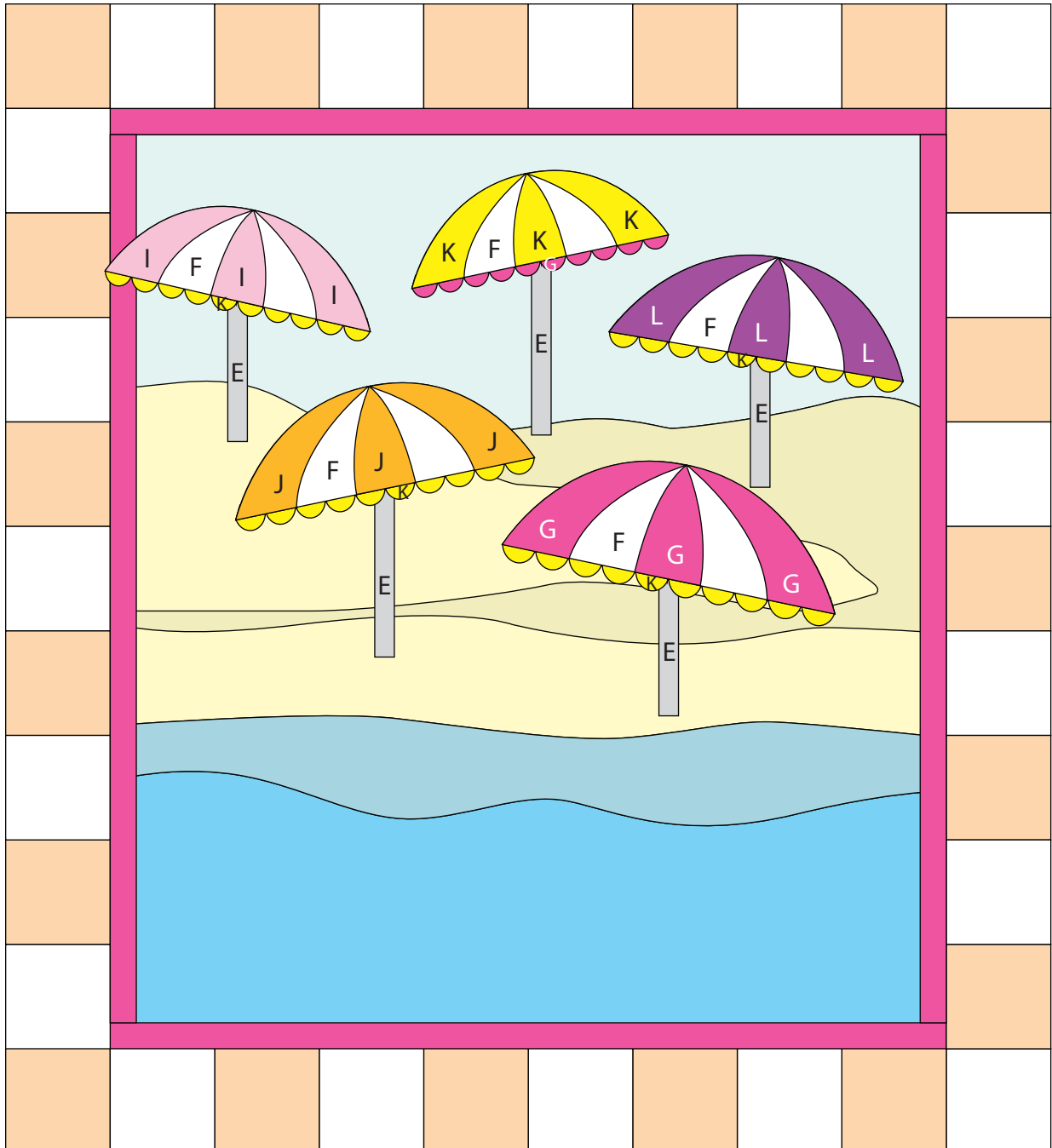
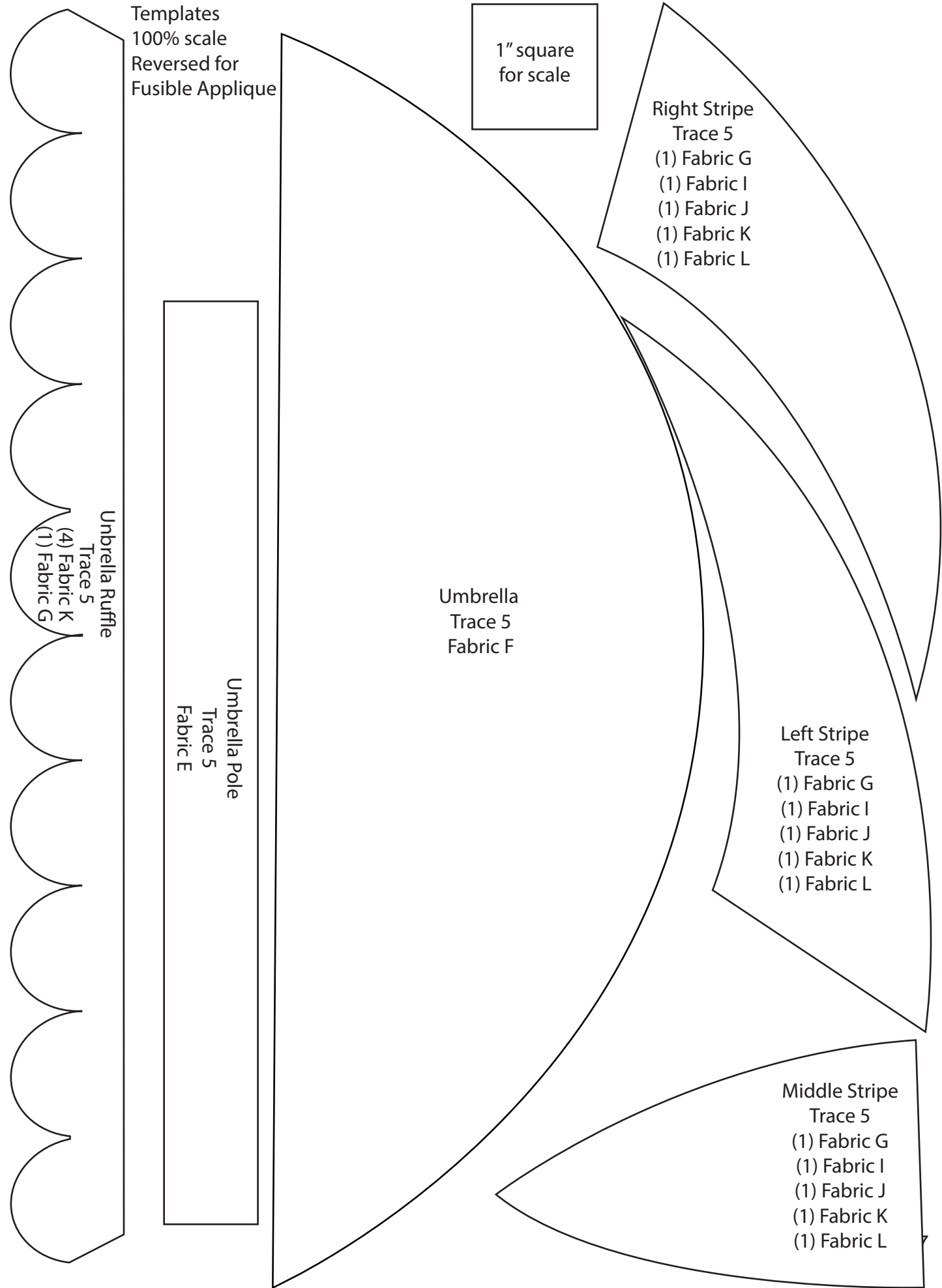


Fig. 7

20. Refer to the Quilt Layout to press the appliqué templates to the quilt top.
21. Finish the raw edges of each shape with a decorative stitch such as a buttonhole or satin stitch.
22. Layer and quilt as desired.
23. Sew the five 2 ½" x WOF Fabric L strips together, end-to-end with 45-degree seams, to make the binding. Fold this long strip in half lengthwise with wrong sides together and press
24. Bind as desired.



Quilt Layout



Templates
100% scale
Reversed for
Fusible Applique

1" square
for scale

Right Stripe
Trace 5
(1) Fabric G
(1) Fabric I
(1) Fabric J
(1) Fabric K
(1) Fabric L

Umbrella
Trace 5
Fabric F

Left Stripe
Trace 5
(1) Fabric G
(1) Fabric I
(1) Fabric J
(1) Fabric K
(1) Fabric L

Middle Stripe
Trace 5
(1) Fabric G
(1) Fabric I
(1) Fabric J
(1) Fabric K
(1) Fabric L

Umbrella Ruffle

Trace 5

(4) Fabric K
(1) Fabric G

Umbrella Pole

Trace 5

Fabric E



Square should
measure 1"
AFTER enlarging
template 200%

Enlarge 400%
Sand
Trace 1
Fabric C