

# NATURE WALK A TO Z Quilt



# Nature Walk A to Z Quilt

## Fabric Requirements

Completed Quilt: 50" x 59"



DC7088 MEADOW 24" panel  
ABC NATURE WALK



DC7089 WHITE 3 yards  
LITTLE WORLD



DC7089 TEAL FAT EIGHTH  
LITTLE WORLD



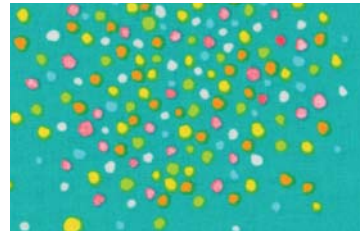
DC7089 AMBER FAT QTR  
LITTLE WORLD



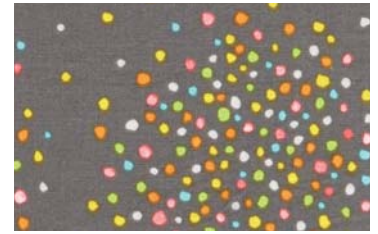
DC7091 MINERAL FAT EIGHTH  
MARGUERITE



DC7091 CLOUD FAT EIGHTH  
MARGUERITE



DC7093 MINERAL FAT EIGHTH  
POLLEN BURST



DC7093 STONE FAT EIGHTH  
POLLEN BURST



DC7094 SPROUT FAT EIGHTH  
DAYDREAM



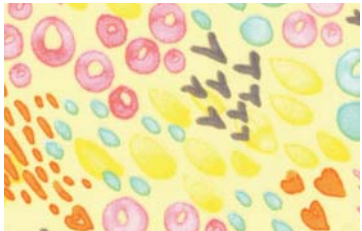
DC7094 CLOUD FAT QTR  
DAYDREAM



DC7095 AZALEA FAT EIGHTH  
STEPPING STONES



DC7095 MINERAL FAT EIGHTH  
STEPPING STONES



DC7090 PRMS FAT EIGHTH  
SUMMER MEADOW



DC7096 GRASS FAT EIGHTH  
FRIENDLY FOREST



DC7096 AZALEA FAT EIGHTH  
FRIENDLY FOREST



DC7096 STONE FAT EIGHTH  
FRIENDLY FOREST



DC7097 BLOM FAT EIGHTH  
TALL GRASS



DC7097 MINERAL FAT EIGHTH  
TALL GRASS



DC7097 MOSS FAT EIGHTH  
TALL GRASS



DC7098 BLOM FAT EIGHTH  
HOP, SKIP & JUMP



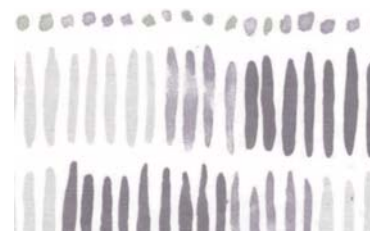
DC7098 MIST FAT EIGHTH  
HOP, SKIP & JUMP



DC7098 STONE FAT EIGHTH  
HOP, SKIP & JUMP



DC7098 MINT FAT EIGHTH  
HOP, SKIP & JUMP



DC7097 STONE 1 1/2 yds  
TALL GRASS

# Nature Walk A to Z Quilt

Finished Quilt Size: 50" x 59" Skill Level: Beginner

## Also Needed:

- 54" x 63" quilt batting.
- A rotary cutter, a long acrylic ruler, cutting mat, thread, scissors, pins, fabric marker.

## Cutting Instructions:

DC7097 STONE - Cut 6 strips 2¼" x WOF (width of fabric). Set aside to bind quilt.  
- Cut 15 strips 2" x LOF (length of fabric). Set aside for sashing.

DC7089 WHITE - Cut 1 piece 66" x WOF.  
- Cut 1 piece 34" x WOF. From this piece, cut 2 pieces 14" wide. Set these 3 pieces aside for backing.  
- Fussy cut 3 pieces 4¾" x 8" to highlight favorite areas of fabric.

DC7088 MEADOW - With a fabric pen, mark equally spaced horizontal & vertical lines to 4¾" x 8" around each letter.  
- Fussy cut all 26 letters and hearts.

Cut all other pieces according to the following table:

FABRIC	CUT 2" x 4¼" RECTANGLES	FABRIC	CUT 2" x 4¼" RECTANGLES
DC7089 TEAL LITTLE WORLD	8	DC7096 GRASS FRIENDLY FOREST	10
DC7089 AMBER LITTLE WORLD	26	DC7096 AZALEA FRIENDLY FOREST	12
DC7091 MINERAL MARGUERITE	8	DC7096 STONE FRIENDLY FOREST	8
DC7091 CLOUD MARGUERITE	14	DC7097 BLOM TALL GRASS	14
DC7093 MINERAL POLLEN BURST	8	DC7097 MINERAL TALL GRASS	6
DC7093 STONE POLLEN BURST	8	DC7097 MOSS TALL GRASS	8
DC7094 SPROUT DAYDREAM	16	DC7098 BLOM HOP, SKIP & JUMP	16
DC7094 CLOUD DAYDREAM	22	DC7098 MIST HOP, SKIP & JUMP	10
DC7095 AZALEA STEPPING STONES	12	DC7098 STONE HOP, SKIP & JUMP	4
DC7095 MINERAL STEPPING STONES	8	DC7098 MINT HOP, SKIP & JUMP	8
DC7090 PRIMROSE SUMMER MEADOW	14		

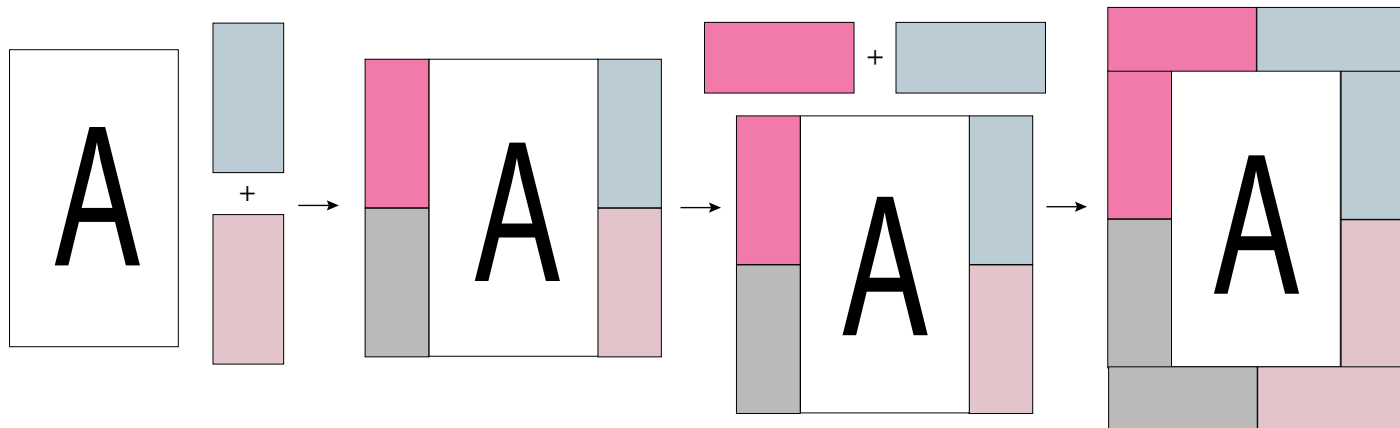
# Nature Walk A to Z Quilt

All seams are  $\frac{1}{4}$ ".

## Making Letter Blocks:

Each **Block** consists of: 1 letter (or hearts, or DC7088 MEADOW) and 8 small rectangles (2 each of 4 different fabrics) that make up the frame. Referring to **Fig 1** for fabric placement, piece these together as indicated in the following diagram, pressing seams open between small rectangles & away from central letter.

Trim finished block (keeping central letter centred) to  $7\frac{1}{2}$ " x 11".



## Piecing the Quilt Top:

Cut a 2" square from each of 10 bold fabrics of your choice from the table on pg.1.

Cut the sashing strips down as follows:

- 2 pieces 35" long
- 6 pieces 23" long
- 7 pieces 11" long
- 24 pieces  $7\frac{1}{2}$ " long

Referring to Fig 1, piece the blocks together into vertical columns using the  $7\frac{1}{2}$ " long sashing pieces between the blocks. Press the seams toward the blocks.

Using the other 3 sizes of sashing pieces and the ten 2" squares, construct the 5 vertical sashing columns as in Fig 1. Press seams open.

Piece all the columns together, pinning first so that blocks and corners line up horizontally. Press the seams toward the sashing.

## Assembling Quilt:

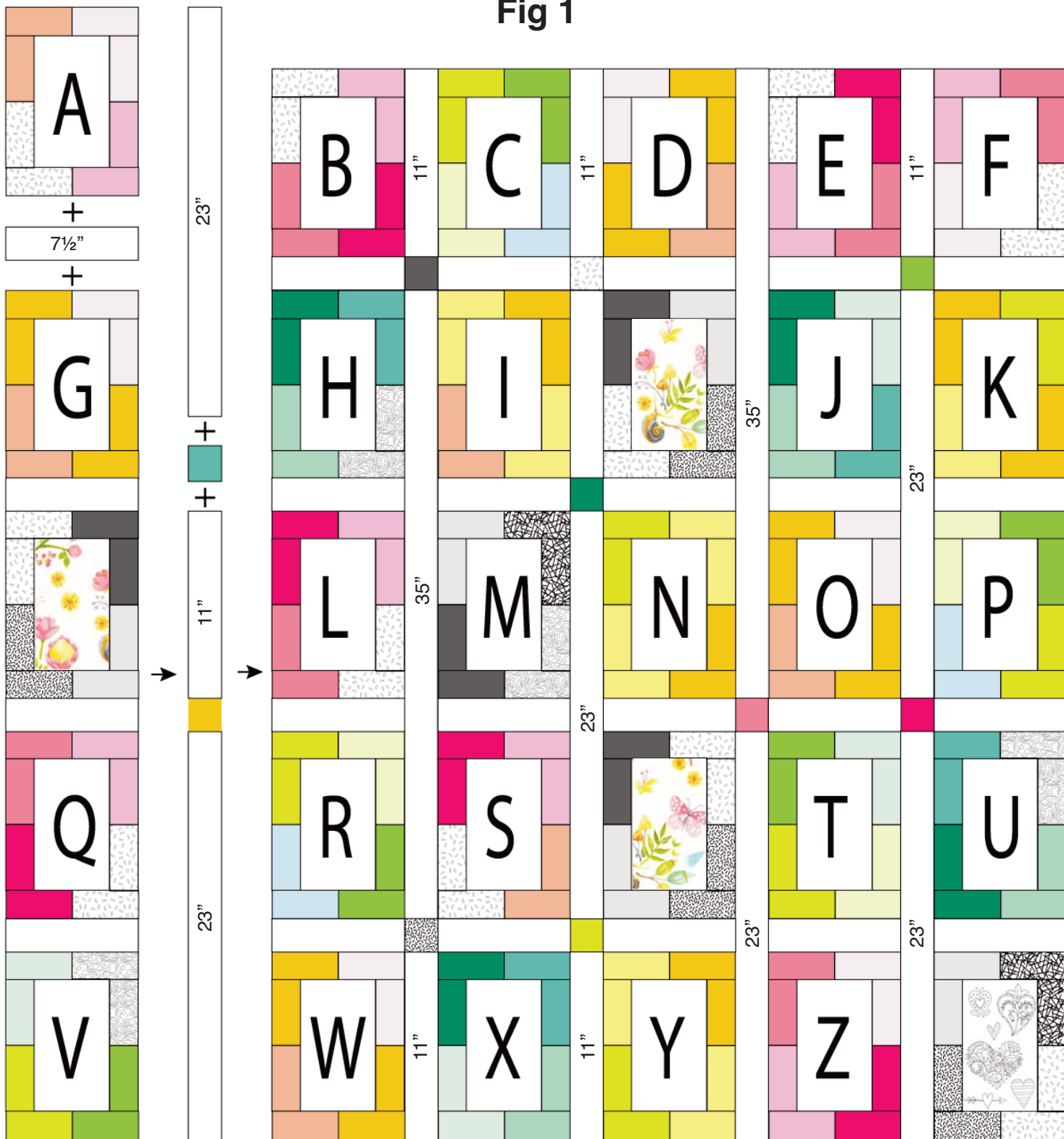
Layer backing, batting and quilt top. Baste or pin.

Quilt as desired.

Square up quilt top.

Join binding strips together and bind in your preferred fashion.

Fig 1



- |  |               |  |                 |  |                |  |               |
|--|---------------|--|-----------------|--|----------------|--|---------------|
|  | DC7091 CLOUD  |  | DC7090 PRIMROSE |  | DC7098 STONE   |  | DC7097 MOSS   |
|  | DC7098 BLOM   |  | DC7089 AMBER    |  | DC7091 MINERAL |  | DC7094 SPROUT |
|  | DC7094 CLOUD  |  | DC7096 STONE    |  | DC7097 MINERAL |  | DC7096 GRASS  |
|  | DC7096 AZALEA |  | DC7093 STONE    |  | DC7098 MINT    |  |               |
|  | DC7097 BLOM   |  | DC7098 MIST     |  | DC7093 MINERAL |  |               |
|  | DC7095 AZALEA |  | DC7095 MINERAL  |  | DC7089 TEAL    |  |               |