

michael miller FABRICS

# BALINESE FLOWERS *Quilt*

SIZE 46-1/2" X 64-3/4" | LEVEL BEGINNER | PATTERN BY DENISE RUSSELL OF PIECED BRAIN



FREE PATTERN AVAILABLE ON [MICHAELMILLERFABRICS.COM](http://MICHAELMILLERFABRICS.COM)

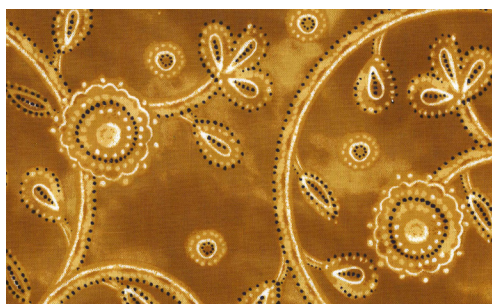


# FABRIC REQUIREMENTS

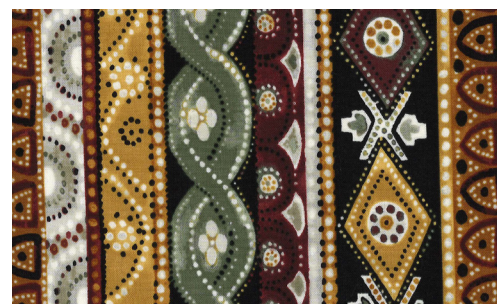
WE DO OUR BEST TO MAKE SURE THESE ARE ACCURATE YARDAGES  
BUT THESE ARE ESTIMATES UNTIL THE FINAL PATTERN IS COMPLETED AND EDITED. THANK YOU.



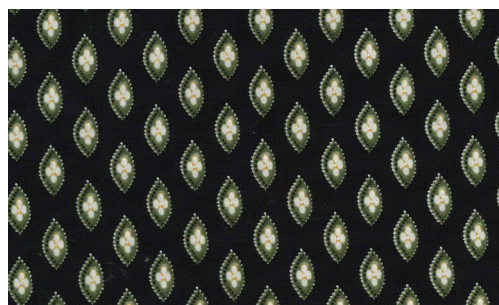
**SC5333-BURGUNDY  
COTTON COUTURE**  
1/8 YARD



**DC8212-MUSTARD  
BOHEMIAN RHAPSODY**  
1/4 YARD



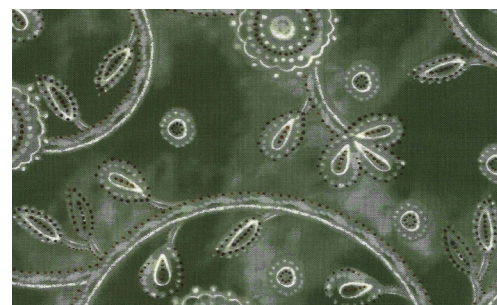
**DC8213-THYME  
SERANG**  
1/2 YARD



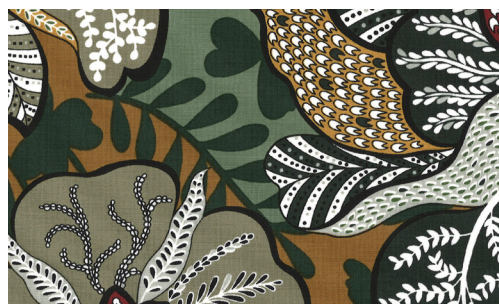
**DC8214-NITE  
JAVA DIAMOND**  
1/2 YARD



**DC8214-VANILLA  
JAVA DIAMOND**  
5/8 YARD



**DC8212-THYME  
BOHEMIAN RHAPSODY**  
3/4 YARD  
(BINDING) 1/2 YARD



**DC8211-THYME  
BALI BAZAAR**  
3/4 YARD



**DC8214-MUSTARD  
JAVA DIAMOND**  
7/8 YARD



**(BACKING)  
YOUR CHOICE**  
2-3/4 YARDS

## FABRIC REQUIREMENTS

SKU	YARDAGE PER ONE QUILT	# OF BOLTS FOR 12 KITS	# OF BOLTS FOR 24 KITS
(A) SC5333-BURGUNDY	1/8 YARD	1 BOLT (1-1/2 YARDS)	1 BOLT (3 YARDS)
(B) DC8212-MUSTARD	1/4 YARD	1 BOLT (3 YARDS)	1 BOLT (6 YARDS)
(C) DC8213-THYME	1/2 YARD	1 BOLT (6 YARDS)	1 BOLT (12 YARDS)
(D) DC8214-NITE	1/2 YARD	1 BOLT (6 YARDS)	1 BOLT (12 YARDS)
(E) DC8214-VANILLA	5/8 YARD	1 BOLT (7-1/2 YARDS)	1 BOLT (15 YARDS)
(F) DC8212-THYME	3/4 YARD	1 BOLT (9 YARDS)	2 BOLTS (18 YARDS)
(G) DC8211-THYME	3/4 YARD	1 BOLT (9 YARDS)	2 BOLTS (18 YARDS)
(H) DC8214-MUSTARD	7/8 YARD	1 BOLT (10-1/2 YARDS)	2 BOLTS (21 YARDS)
(BINDING) DC8212-THYME	1/2 YARD	1 BOLT (6 YARDS)	1 BOLT (12 YARDS)
(BACKING) YOUR CHOICE	2-3/4 YARDS	3 BOLTS (33 YARDS)	5 BOLTS (66 YARDS)
<b>TOTAL BOLTS NEEDED</b>		<b>12 BOLTS (9 W/O BACK)</b>	<b>17 BOLTS (12 W/O BACK)</b>

BATTING: 54" X 72"

## Balinese Flowers

Designed by Denise Russell of Pieced Brain

Quilt size: 46-1/2" x 64-3/4"

Level: Beginner

### Materials and Cutting Instructions

Notes:

\*Requirements are based on 42" fabric width.

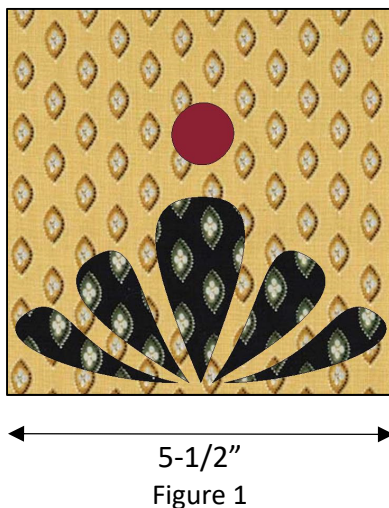
\*Fabrics are cut on the width of fabric (WOF). When cut on the length of fabric, the notation **LOF** will be indicated.

Fabric	Yardage	Cutting
SC5333 Cotton Couture Burgundy	1/8 yard	*Cut twenty-two circles with the template.
DC8212-Mustard	1/4 yard	*Cut one (6-1/2" x WOF) strip. Sub-cut four 6-1/2" squares.
DC8213-Thyme	1/2 yard	*Cut five (2-1/2" x WOF) strips for border 4.
DC8214-Nite	1/2 yard	*Cut twenty-two of <i>each</i> template: - Templates A, B, and C: place and cut them on the <b>LOF</b> . - Templates D and E: place and cut them on the <b>WOF</b> .
DC8214-Vanilla	5/8 yard	*Cut five (1-1/2" x WOF) strips for border 3. *Cut six (1-1/2" x WOF) strips for border 5.
DC8212-Thyme	3/4 yard	*Cut five (1-1/2" x WOF) strips for border 2. *Cut six (2-1/2" x WOF) strips for binding.
DC8211-Thyme	3/4 yard	*Cut one 24-1/2" x 42-1/2" rectangle.
DC8214-Mustard	7/8 yard	*Cut two (6-1/2" x 24-1/2") strips: top and bottom border 1. *Cut two (6-1/2" x 42-1/2") strips: sides of border 1.
Backing: 2-3/4 yards Batting: 54" x 72" Fusible web Template Plastic		

**Disclaimers:** This pattern is provided as a courtesy to quilt stores, catalogs, and quilters. Michael Miller Fabrics, LLC is not responsible for the accuracy of any kits packaged to accompany this pattern. Please direct any inquiries to the kit maker. Fabric requirements for this pattern may allow for excess yardage to accommodate specific placement of motifs or for any fussy-cutting to achieve the finished quilt design. While every attempt has been made to give accurate measurements, yardage requirements, and construction directions, this does not preclude personal variations in measuring, cutting, or sewing. The enclosed directions were used in the construction of the original quilt.

### Border 1 Assembly

1. Trace all shapes on the plastic to make templates. Cut on the outline. Trace each template on the smooth side of the fusible web twenty-two times. Cut each shape  $\frac{1}{8}$ " outside the outline. Fuse the shapes A, B, C, D, and E to the wrong side of the DC8214-Nite and the circle to the Burgundy, cut on the outline, and remove paper backing.
2. Fold in half the two  $6\frac{1}{2}$ " x  $42\frac{1}{2}$ " DC8214-Mustard border strips and crease to mark the centers. Beginning with one strip, place a shape A on the crease line and 1" above the bottom raw edge. Place three more shapes A to the right and to the left of the first one exactly 6" apart. Place a circle  $\frac{1}{2}$ " above them.
3. Position the remaining elements so the applique' spans  $5\frac{1}{2}$ " from point to point (*figure 1*) leaving a  $\frac{3}{4}$ " space in between each group. Machine applique' using matching thread and the blanket stitch. Repeat with the other side border strip.



4. Sew the border strips to each side of the  $24\frac{1}{2}$ " x  $42\frac{1}{2}$ " DC8211-Thyme center rectangle (*figure 2*). Press seams to the center.



Figure 2



5. For the top and bottom border, fold each 6-1/2" x 24-1/2" DC8214-Mustard strip in half and mark the center with a crease. Place two shapes A on each side of the center, 3" away from the crease line. Position the other elements as in steps 2 and 3.

6. Sew two 6-1/2" DC8212-Mustard squares to each end of the step 5 border strips. Press seams to the squares. Sew one strip to the top and one to the bottom of the quilt center (*figure 3*).



Figure 3

### Quilt Assembly

7. For border 2, sew five 1-1/2" DC8212-Thyme border strips together end to end using diagonal seams. Measure the vertical length of the quilt top through the center and cut two border 2 strips that length. Sew one strip to each side of the quilt top. Measure the width of the quilt top through the center. Cut two border 2 strips that length and sew one to the top and one to the bottom. Press the seams toward the borders.

8. Repeat step 7 with the five 1-1/2" DC8214-Vanilla border strips to make and add border 3.

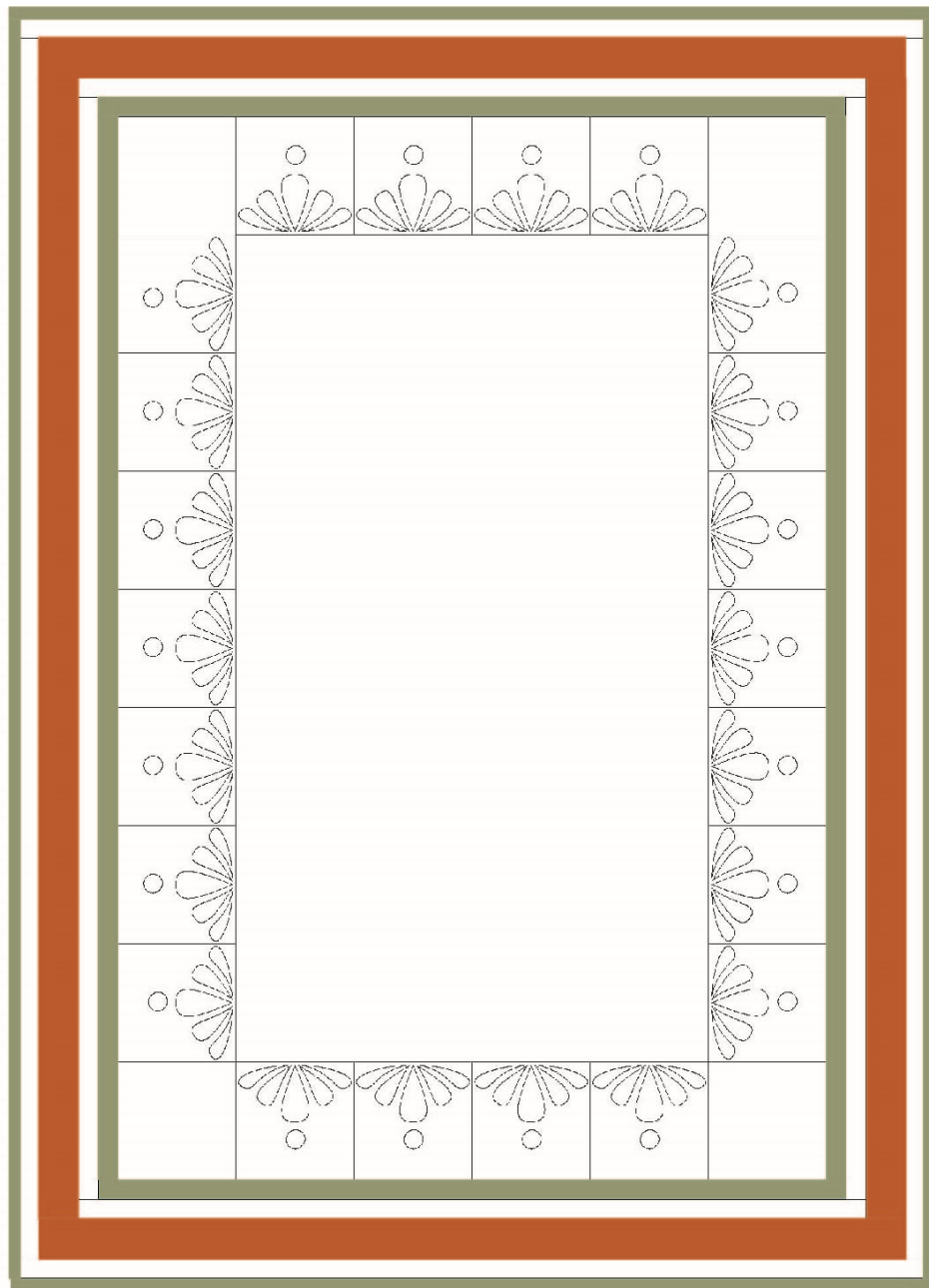
9. Repeat step 7 with the five 2-1/2" DC8213-Thyme border strips (except sew them with **straight** seams) to make and add border 4.

10. Repeat step 7 with the six 1-1/2" DC8214-Vanilla border strips to make and add border 5.

### Finishing

11. Create a quilt sandwich with the batting between the quilt top and the backing. Pin or baste layers together, mark quilting design, and quilt by hand or machine. When quilting is complete, remove pins or basting, and trim batting and backing even with raw edges of the quilt top.

12. Join the six 2-1/2" DC8212-Thyme binding strips together end to end using a diagonal seam to make one long strip. Press in half lengthwise. Sew binding to the edges of the quilt top, mitering corners, and overlapping ends. Fold binding to the back of the quilt and stitch it in place by hand to finish.



Quilt Diagram

## Templates

