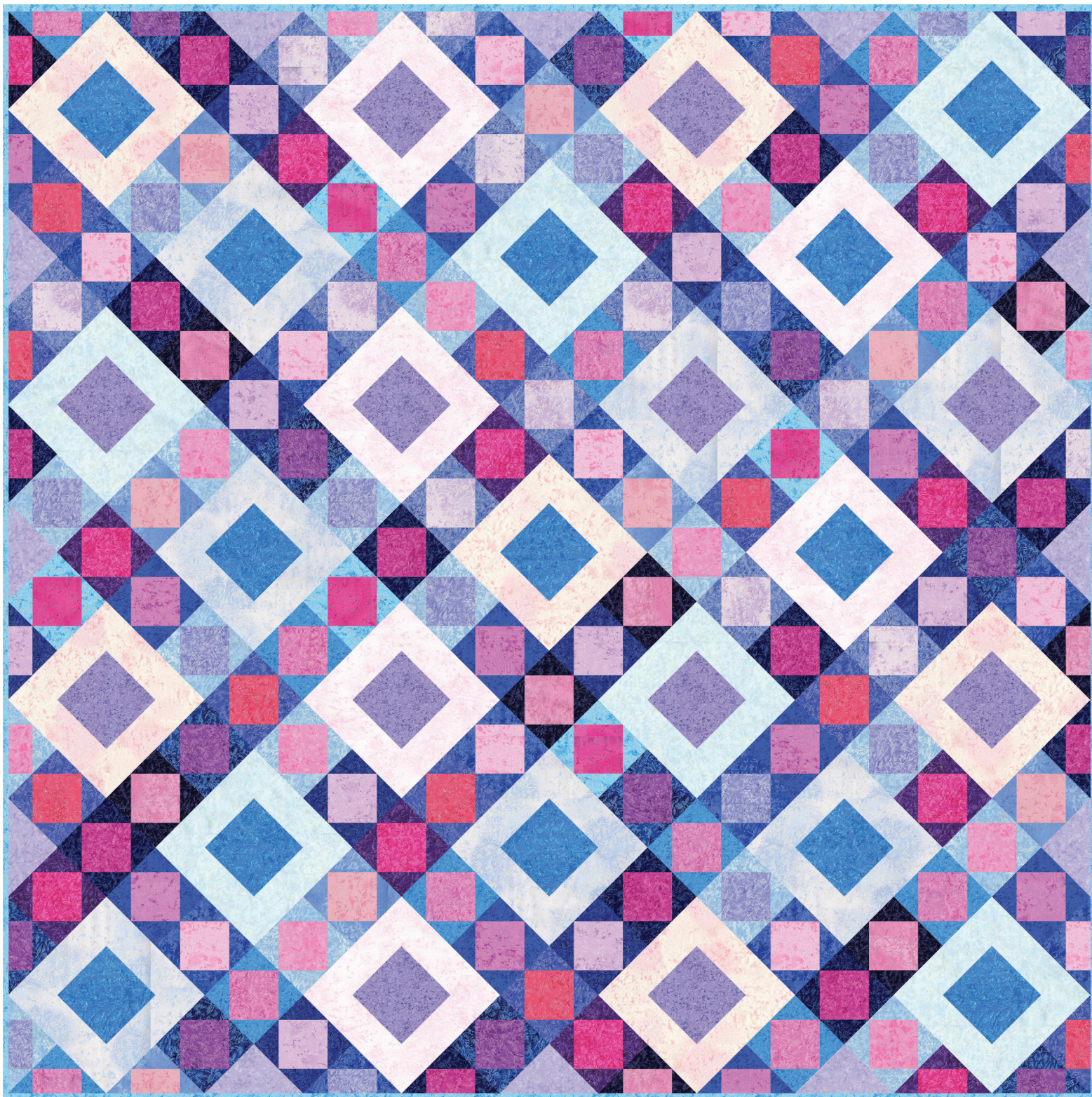


michael|miller FABRICS

FAIRY FROST TWILIGHT SKY *Quilt*

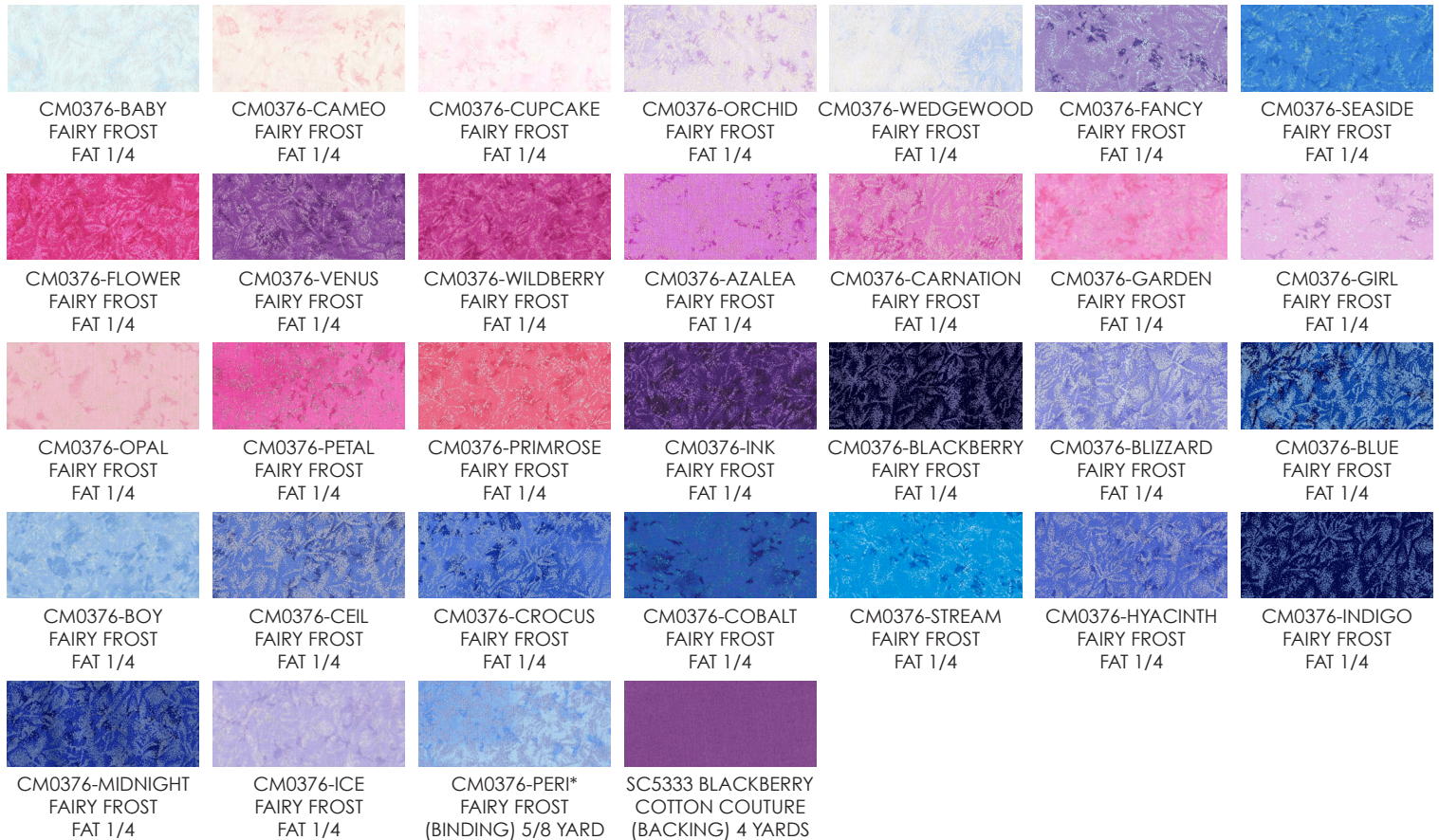
SIZE: 62-1/2"W X 62-1/2"H | LEVEL: ADVANCED BEGINNER | DESIGNED BY HEIDI PRIDEMORE



FREE PATTERN AVAILABLE ON MICHAELMILLERFABRICS.COM. FAT QUARTER FRIENDLY!

FABRIC REQUIREMENTS

WE DO OUR BEST TO MAKE SURE THESE ARE ACCURATE YARDAGES
BUT THESE ARE ESTIMATES UNTIL THE FINAL PATTERN IS COMPLETED AND EDITED. THANK YOU.



FABRIC REQUIREMENTS

SKU	YARDAGE PER ONE QUILT	# OF BOLTS FOR 12 KITS	# OF BOLTS FOR 24 KITS
(A) CM0376-BABY	FAT 1/4	1 BOLT (3 YARDS)	1 BOLT (6 YARDS)
(B) CM0376-CAMEO	FAT 1/4	1 BOLT (3 YARDS)	1 BOLT (6 YARDS)
(C) CM0376-CUPCAKE	FAT 1/4	1 BOLT (3 YARDS)	1 BOLT (6 YARDS)
(D) CM0376-ORCHID	FAT 1/4	1 BOLT (3 YARDS)	1 BOLT (6 YARDS)
(E) CM0376-WEDGEWOOD	FAT 1/4	1 BOLT (3 YARDS)	1 BOLT (6 YARDS)
(F) CM0376-FANCY	FAT 1/4	1 BOLT (3 YARDS)	1 BOLT (6 YARDS)
(G) CM0376-SEASIDE	FAT 1/4	1 BOLT (3 YARDS)	1 BOLT (6 YARDS)
(H) CM0376-FLOWER	FAT 1/4	1 BOLT (3 YARDS)	1 BOLT (6 YARDS)
(I) CM0376-VENUS	FAT 1/4	1 BOLT (3 YARDS)	1 BOLT (6 YARDS)
(J) CM0376-WILDBERRY	FAT 1/4	1 BOLT (3 YARDS)	1 BOLT (6 YARDS)
(K) CM0376-AZALEA	FAT 1/4	1 BOLT (3 YARDS)	1 BOLT (6 YARDS)
(L) CM0376-CARNATION	FAT 1/4	1 BOLT (3 YARDS)	1 BOLT (6 YARDS)
(M) CM0376-GARDEN	FAT 1/4	1 BOLT (3 YARDS)	1 BOLT (6 YARDS)
(N) CM0376-GIRL	FAT 1/4	1 BOLT (3 YARDS)	1 BOLT (6 YARDS)
(O) CM0376-OPAL	FAT 1/4	1 BOLT (3 YARDS)	1 BOLT (6 YARDS)
(P) CM0376-PETAL	FAT 1/4	1 BOLT (3 YARDS)	1 BOLT (6 YARDS)
(Q) CM0376-PRIMROSE	FAT 1/4	1 BOLT (3 YARDS)	1 BOLT (6 YARDS)
(R) CM0376-INK	FAT 1/4	1 BOLT (3 YARDS)	1 BOLT (6 YARDS)
(S) CM0376-BLACKBERRY	FAT 1/4	1 BOLT (3 YARDS)	1 BOLT (6 YARDS)
(T) CM0376-BLIZZARD	FAT 1/4	1 BOLT (3 YARDS)	1 BOLT (6 YARDS)
(U) CM0376-BLUE	FAT 1/4	1 BOLT (3 YARDS)	1 BOLT (6 YARDS)
(V) CM0376-BOY	FAT 1/4	1 BOLT (3 YARDS)	1 BOLT (6 YARDS)
(W) CM0376-CEIL	FAT 1/4	1 BOLT (3 YARDS)	1 BOLT (6 YARDS)
(X) CM0376-CROCUS	FAT 1/4	1 BOLT (3 YARDS)	1 BOLT (6 YARDS)
(Y) CM0376-COBALT	FAT 1/4	1 BOLT (3 YARDS)	1 BOLT (6 YARDS)
(Z) CM0376-STREAM	FAT 1/4	1 BOLT (3 YARDS)	1 BOLT (6 YARDS)
(1) CM0376-HYACINTH	FAT 1/4	1 BOLT (3 YARDS)	1 BOLT (6 YARDS)
(2) CM0376-INDIGO	FAT 1/4	1 BOLT (3 YARDS)	1 BOLT (6 YARDS)
(3) CM0376-MIDNIGHT	FAT 1/4	1 BOLT (3 YARDS)	1 BOLT (6 YARDS)
(4) CM0376-ICE	FAT 1/4	1 BOLT (3 YARDS)	1 BOLT (6 YARDS)
(BINDING) CM0376-PERI*	5/8 YARD	1 BOLT (7-1/2 YARDS)	1 BOLT (15 YARDS)
(BACKING) SC5333-BLACKBERRY	4 YARDS	4 BOLTS (48 YARDS)	8 BOLTS (96 YARDS)
TOTAL BOLTS NEEDED		35 BOLTS (31 W/O BACK)	39 BOLTS (31 W/O BACK)

*INCLUDES BINDING

"Fairy Frost - Cool"

Quilt by Heidi Pridemore

Size: Approximately 62 ¼" x 62 ¼" Skill Level: Advanced Beginner

Materials

Cutting instructions

Please Note: All strips are cut across the width of fabric (WOF) from selvage to selvage edge unless otherwise noted.

	Fabric	Yardage	Cutting
(A)	CM0376 Baby, Cameo, Cupcake, Orchid & Wedgewood	Five Light Colored Fat Quarters	Block One Frames • From each Fat Quarter, cut ten 2 ½" x 8 ½" strips and ten 2 ½" x 4 ½" strips.
(B)	CM0376 Fancy & Seaside	One Medium Blue and one Medium Purple Fat Quarter	Block One Centers • From each Fat Quarter, cut thirteen 4 ½" squares. <i>Note: You will have one extra square.</i>
(C)	CM0376 Flower, Venus, Wildberry, Azalea, Carnation, Garden, Girl, Opal, Petal & Primrose.	Ten assorted Pink and Purple Fat Quarters	Block Two Centers • From each Fat Quarter, cut sixteen 4 ½" squares. <i>Note: You will have eight extra squares.</i>
(D)	CM0376 Ink, Blackberry, Blizzard, Blue, Boy, Ceil, Crocus, Cobalt, Stream, Hyacinth, Indigo & Midnight	Twelve assorted Blue Fat Quarters	Block Two Corners • From each Fat Quarter, cut fifty-one 2 ½" squares. <i>Note: You will have four extra squares.</i>
(E)	CM0376-Ice Fairy Frost-Ice	One Light Purple Fat Quarter	Setting Triangles • Cut three 7 ¼" squares. Cut each square across both diagonals for a total of twelve setting triangles.
(F)	CM376-Peri Fairy Frost-Peri	⅝ yard	Binding • Cut seven 2 ½" x WOF strips for the binding.
Backing	CM376-Soft Pink Fairy Frost-Soft Pink	4 yards	Backing • Cut two 71" x WOF pieces. Se the pieces together and cut one 71" x 71" piece for the backing.

You will also need:

- 71" x 71" batting, fusible web, threads to match, scissors, straight pins, acrylic ruler, rotary cutter and mat.

Disclaimers

This pattern is provided as a courtesy to quilt stores, catalogs and quilters. Michael Miller Fabrics, LLC is not responsible for the accuracy of any kits packaged to accompany this pattern. Please direct any inquiries to the kit maker.

Yardage requirements for this pattern may allow for excess yardage to accommodate specific placement of motifs or to allow for any fussy-cutting to achieve the finished quilt design.

While every attempt has been made to give accurate measurements, yardage requirements and construction directions; this does not allow personal variations in measuring, cutting or sewing. The enclosed directions were used in the construction of the original quilt.

Block Assembly

1. Select two matching $2\frac{1}{2}$ " x $4\frac{1}{2}$ " Fabric A strips and two matching $2\frac{1}{2}$ " x $8\frac{1}{2}$ " Fabric A strips for each Block One Frame. Sew one $2\frac{1}{2}$ " x $4\frac{1}{2}$ " Fabric A strip to each side of one $4\frac{1}{2}$ " Fabric B square. Sew one $2\frac{1}{2}$ " x $8\frac{1}{2}$ " Fabric A strip to the top and bottom of the $4\frac{1}{2}$ " Fabric B square to make one Block One square (Fig. 1). Repeat to make twenty-five Block One squares total.

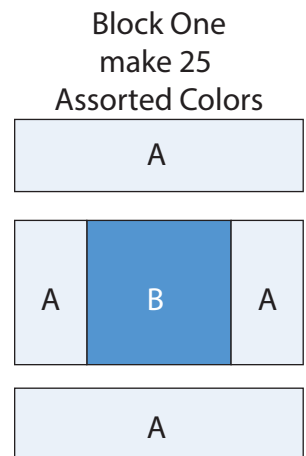


Fig. 1

2. Select four matching $2\frac{1}{2}$ " Fabric D squares for each Block Two corners. Place one $2\frac{1}{2}$ " square on the top left corner of one $4\frac{1}{2}$ " Fabric C square, right sides together (Fig. 2). Sew across the diagonal of the smaller square from the upper right corner to the lower left corner (Fig. 2). Flip open the triangle formed and press (Fig. 3). Trim away the excess fabric from behind the triangle $\frac{1}{4}$ " away from the sewn seam.
3. Follow Figure 4 for the seam direction to add a $2\frac{1}{2}$ " Fabric D square to each of the remaining corners of the $4\frac{1}{2}$ " Fabric C square to make one Block Two square (Fig. 5). Repeat to make (152) Block Two squares total.

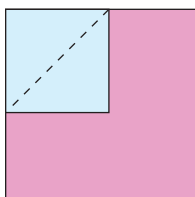


Fig. 2

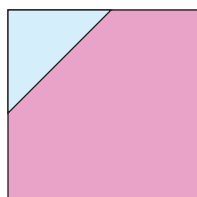


Fig. 3

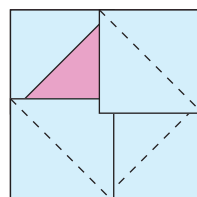


Fig. 4

Block Two
make 152
Assorted Colors

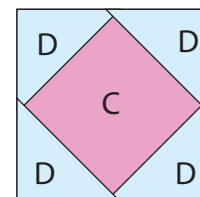


Fig. 5

Quilt Top Assembly

(Follow the Quilt Layout while assembling the quilt top.)

4. Refer to Figure 6 for block placement to sew together the twenty-five Block One squares, (152) Block Two squares and twelve Fabric E setting triangles into rows.
5. Sew the rows together to make the Center Block.

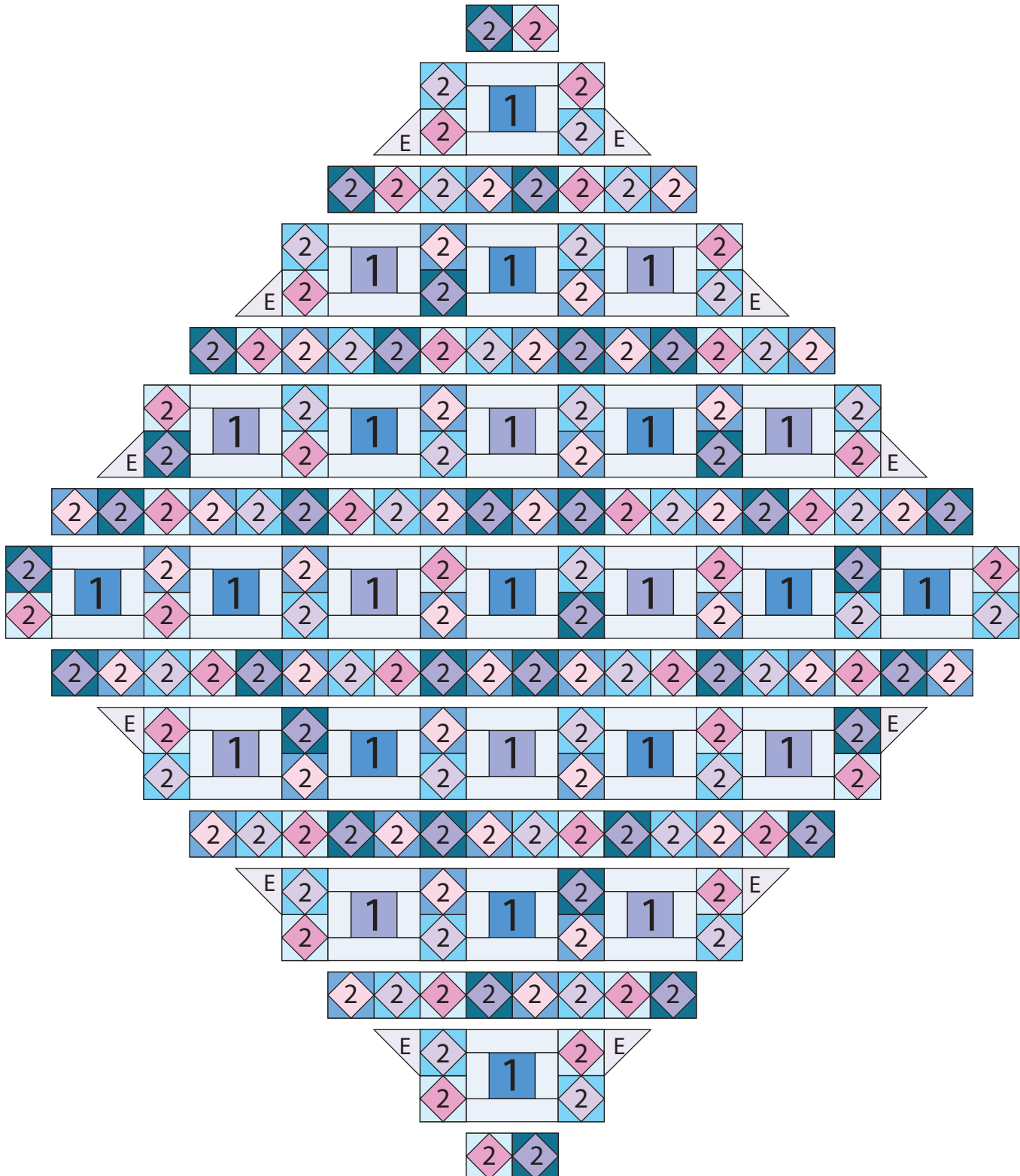
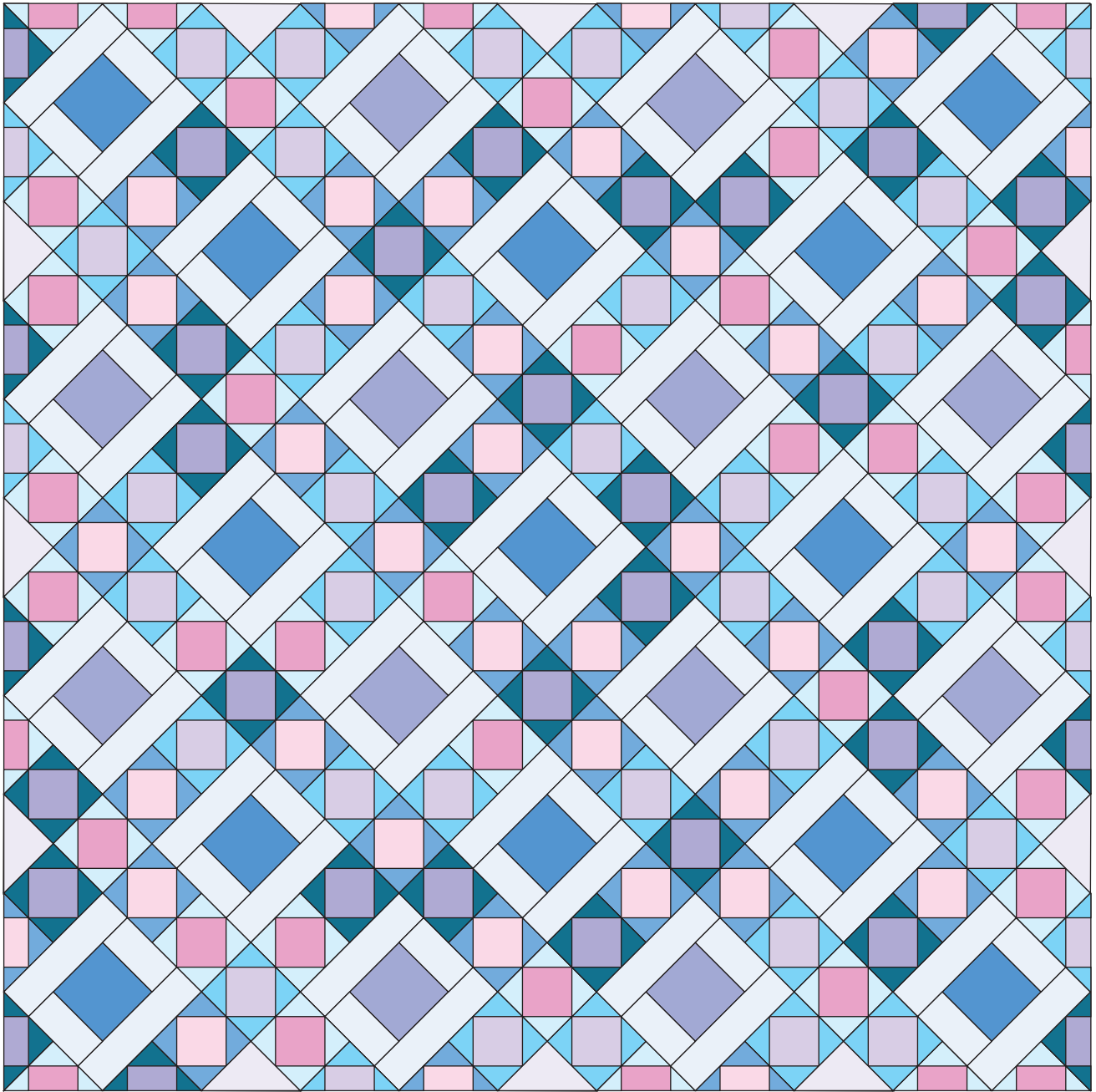


Fig. 6

6. Trim the Center Block to measure $62 \frac{1}{4}$ " x $62 \frac{1}{2}$ " square to make the quilt top.
7. Layer and quilt as desired.
8. Sew the seven $2 \frac{1}{2}$ " x WOF Fabric F binding strips together, end-to-end with 45-degree seams, to make the binding. Fold this long strip in half lengthwise with wrong sides together and press
9. Bind as desired.



Quilt Layout