

michael miller FABRICS

ALFRESCO Quilt

SIZE 42"W X 42"H | LEVEL ADVANCED BEGINNER | DESIGNED BY HEIDI PRIDEMORE



FREE PATTERN AVAILABLE ON MICHAELMILLERFABRICS.COM

FABRIC REQUIREMENTS

WE DO OUR BEST TO MAKE SURE THESE ARE ACCURATE YARDAGES
BUT THESE ARE ESTIMATES UNTIL THE FINAL PATTERN IS COMPLETED AND EDITED. THANK YOU.



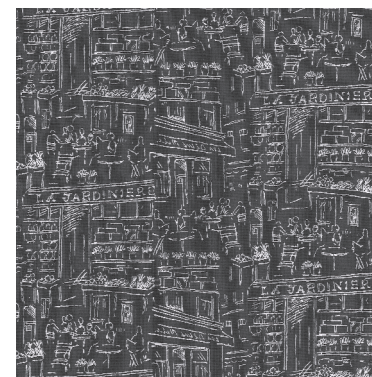
**DC8177 SPRING
ALFRESCO
3/4 YARD**



**SC5333 METAL*
COTTON COUTURE
3/4 YARD**



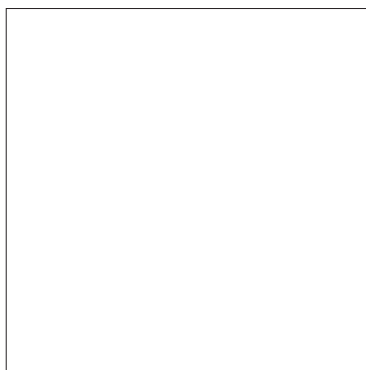
**DC8178 SPRING
FLOWERS ALFRESCO
1/2 YARD**



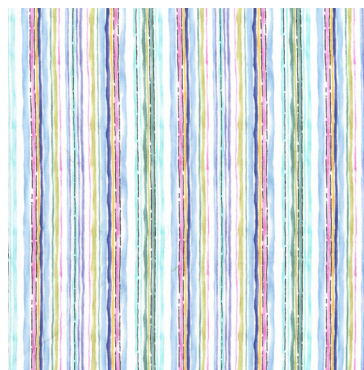
**DC8179 BLACK
DINING ALFRESCO
3/8 YARD**



**DC8179 ROSE
DINING ALFRESCO
1/4 YARD**



**SC5333 SOFT WHITE
COTTON COUTURE
1/4 YARD**



**DC8183 SPRING
AQUARELLE STRIPE
1/4 YARD**



**DC8180 SPRING
FRESH AIR
(BACKING) 3 YARDS**

FABRIC REQUIREMENTS

SKU	YARDAGE PER ONE QUILT	# OF BOLTS FOR 12 KITS	# OF BOLTS FOR 24 KITS
(A) DC8177-SPRING	3/4 YARD	1 BOLT (9 YARDS)	2 BOLTS (18 YARDS)
(B) SC5333-METAL*	3/4 YARD	1 BOLT (9 YARDS)	2 BOLTS (18 YARDS)
(C) DC8178-SPRING	1/2 YARD	1 BOLT (6 YARDS)	1 BOLT (12 YARDS)
(D) DC8179-BLACK	3/8 YARD	1 BOLT (4-1/2 YARDS)	1 BOLT (9 YARDS)
(E) DC8179-ROSE	1/4 YARD	1 BOLT (3 YARDS)	1 BOLT (6 YARDS)
(F) SC5333-SOFT WHITE	1/4 YARD	1 BOLT (3 YARDS)	1 BOLT (6 YARDS)
(G) DC8183-SPRING	1/4 YARD	1 BOLT (3 YARDS)	1 BOLT (6 YARDS)
(BACKING) DC8180-SPRING	3 YARDS	3 BOLTS (36 YARDS)	5 BOLTS (72 YARDS)
TOTAL BOLTS NEEDED		10 BOLTS (7 W/O BACK)	14 BOLTS (9 W/O BACK)

*INCLUDES BINDING

"Alfresco"

Quilt by Heidi Pridemore

Size: Approximately 42" x 42" Skill Level: Advanced Beginner

Materials

Cutting instructions

Please Note: All strips are cut across the width of fabric (WOF) from selvage to selvage edge unless otherwise noted.

	Fabric	Yardage	Cutting
(A)	DC8177-Spring Alfresco – Spring	$\frac{3}{4}$ yard	• Cut one 23" x 23" square.
(B)	SC5333-Metal Cotton Couture – Metal	$\frac{3}{4}$ yard	• Cut two 1 $\frac{1}{2}$ " x 32 $\frac{1}{2}$ " WOF strips. • Cut two 1 $\frac{1}{2}$ " x 30 $\frac{1}{2}$ " WOF strips. • Cut two 1 $\frac{1}{4}$ " x 24 $\frac{1}{2}$ " WOF strips. • Cut two 1 $\frac{1}{4}$ " x 23" WOF strips. • Cut five 2 $\frac{1}{2}$ " x WOF strips for the binding.
(C)	DC8178-Spring Flowers Alfresco – Spring	$\frac{1}{2}$ yard	• Cut two 3 $\frac{1}{2}$ " x 30 $\frac{1}{2}$ " WOF strips. • Cut two 3 $\frac{1}{2}$ " x 24 $\frac{1}{2}$ " WOF strips.
(D)	DC8179-Dk. Gray Dining Alfresco – Dk. Gray	$\frac{3}{8}$ yard	• Cut one 4 $\frac{7}{8}$ " x WOF strip. Sub-cut eight 4 $\frac{7}{8}$ " squares. Cut each 4 $\frac{7}{8}$ " square from the upper right corner to the lower left corner to make sixteen large triangles. • Cut one 4 $\frac{7}{8}$ " x WOF strip. Sub-cut eight 4 $\frac{7}{8}$ " squares. Cut each 4 $\frac{7}{8}$ " square from the upper left corner to the lower right corner to make sixteen large triangles.
(E)	DC8179-Rose Dining Alfresco – Rose	$\frac{1}{4}$ yard	• Cut one 5 $\frac{1}{4}$ " x WOF strip. Sub-cut eight 5 $\frac{1}{4}$ " squares. Cut each 5 $\frac{1}{4}$ " square across both diagonals to make thirty-two small triangles.
(F)	SC5333-Soft White Cotton Couture – Soft White	$\frac{3}{8}$ yard	• Cut one 5 $\frac{1}{4}$ " x WOF strip. Sub-cut eight 5 $\frac{1}{4}$ " squares. Cut each 5 $\frac{1}{4}$ " square across both diagonals to make thirty-two small triangles. • Cut one 4 $\frac{1}{2}$ " x WOF strip. Sub-cut four 4 $\frac{1}{2}$ " squares.
(G)	DC8183-Spring Aquarelle Stripe – Spring	$\frac{1}{4}$ yard	• Cut two 1 $\frac{1}{2}$ " x 42 $\frac{1}{2}$ " WOF strips, piece as needed. • Cut two 1 $\frac{1}{2}$ " x 40 $\frac{1}{2}$ " WOF strips.
Backing	DC8180-Spring Fresh Air – Spring	3 yards	• Cut two 50" x WOF strips. Piece the strips together and trim to make the 50" x 50" pieced backing.

You will also need:

- 50" x 50" batting, fusible web, threads to match, scissors, straight pins, acrylic ruler, rotary cutter and mat.

Disclaimers

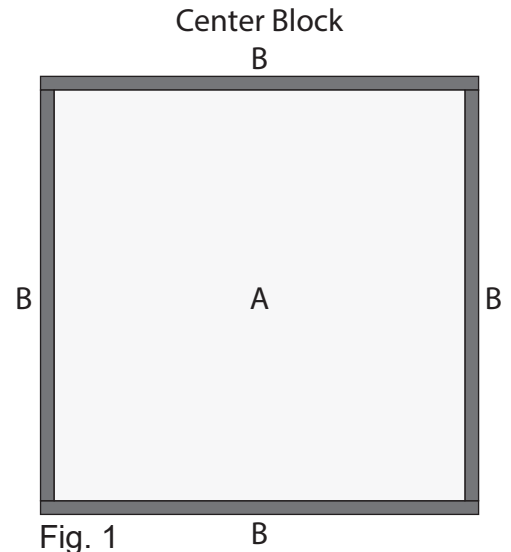
This pattern is provided as a courtesy to quilt stores, catalogs and quilters. Michael Miller Fabrics, LLC is not responsible for the accuracy of any kits packaged to accompany this pattern. Please direct any inquiries to the kit maker.

Yardage requirements for this pattern may allow for excess yardage to accommodate specific placement of motifs or to allow for any fussy-cutting to achieve the finished quilt design.

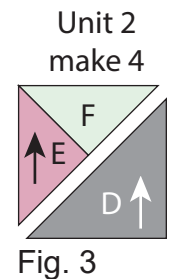
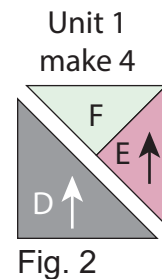
While every attempt has been made to give accurate measurements, yardage requirements and construction directions; this does not allow personal variations in measuring, cutting or sewing. The enclosed directions were used in the construction of the original quilt.

Block Assembly

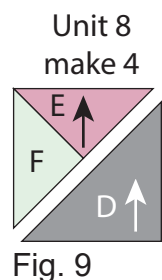
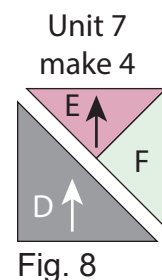
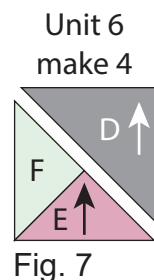
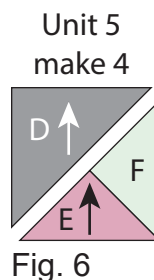
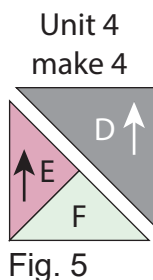
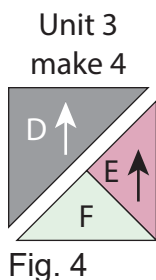
1. Sew one 1 1/4" x 23" Fabric B strip to each side of one 23" x 23" Fabric A square. Sew one 1 1/4" x 24 1/2" Fabric B strip to the top and to the bottom of the Fabric A square to make the Center Block (Fig. 1).



2. Sew one small Fabric F triangle to one small Fabric E triangle to make one FE triangle. Pay attention to the triangle orientations. Sew the FE triangle to one large Fabric D triangle, long sides together, to make one Unit 1 square (Fig. 2). Repeat to make four Unit 1 squares total.
3. Sew one small Fabric E triangle to one small Fabric F triangle to make one EF triangle. Pay attention to the triangle orientations. Sew the EF triangle to one large Fabric D triangle, long sides together, to make one Unit 2 square (Fig. 3). Repeat to make our Unit 2 squares total.



4. Repeat Steps 2-3 and refer to Figures 4-9 for fabric identification, placement and orientation to make four Unit 3 squares, four Unit 4 squares, four Unit 5 squares, four Unit 6 squares, four Unit 7 squares and four Unit 8 squares.



5. Sew one Unit 1 square to the left side of one Unit 2 square to make one Unit 9 strip (Fig. 10). Pay attention to the unit orientations. Repeat to make four Unit 9 strips total.
6. Sew one Unit 3 square to the left side of one Unit 4 square to make one Unit 10 strip (Fig. 11). Pay attention to the unit orientations. Repeat to make four Unit 10 strips total.
7. Sew one Unit 6 square to the top of one Unit 8 square to make one Unit 11 strip (Fig. 12). Pay attention to the unit orientations. Repeat to make four Unit 11 strips total.
8. Sew one Unit 5 square to the top of one Unit 7 square to make one Unit 12 strip (Fig. 13). Pay attention to the unit orientations. Repeat to make four Unit 12 strips total.

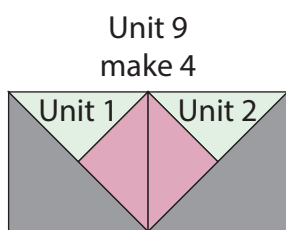


Fig. 10

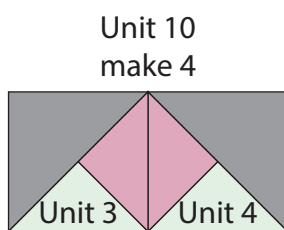


Fig. 11

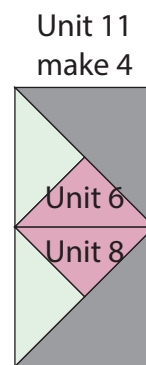


Fig. 12

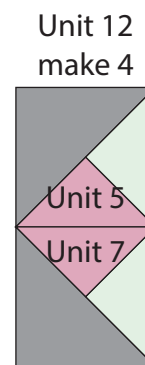
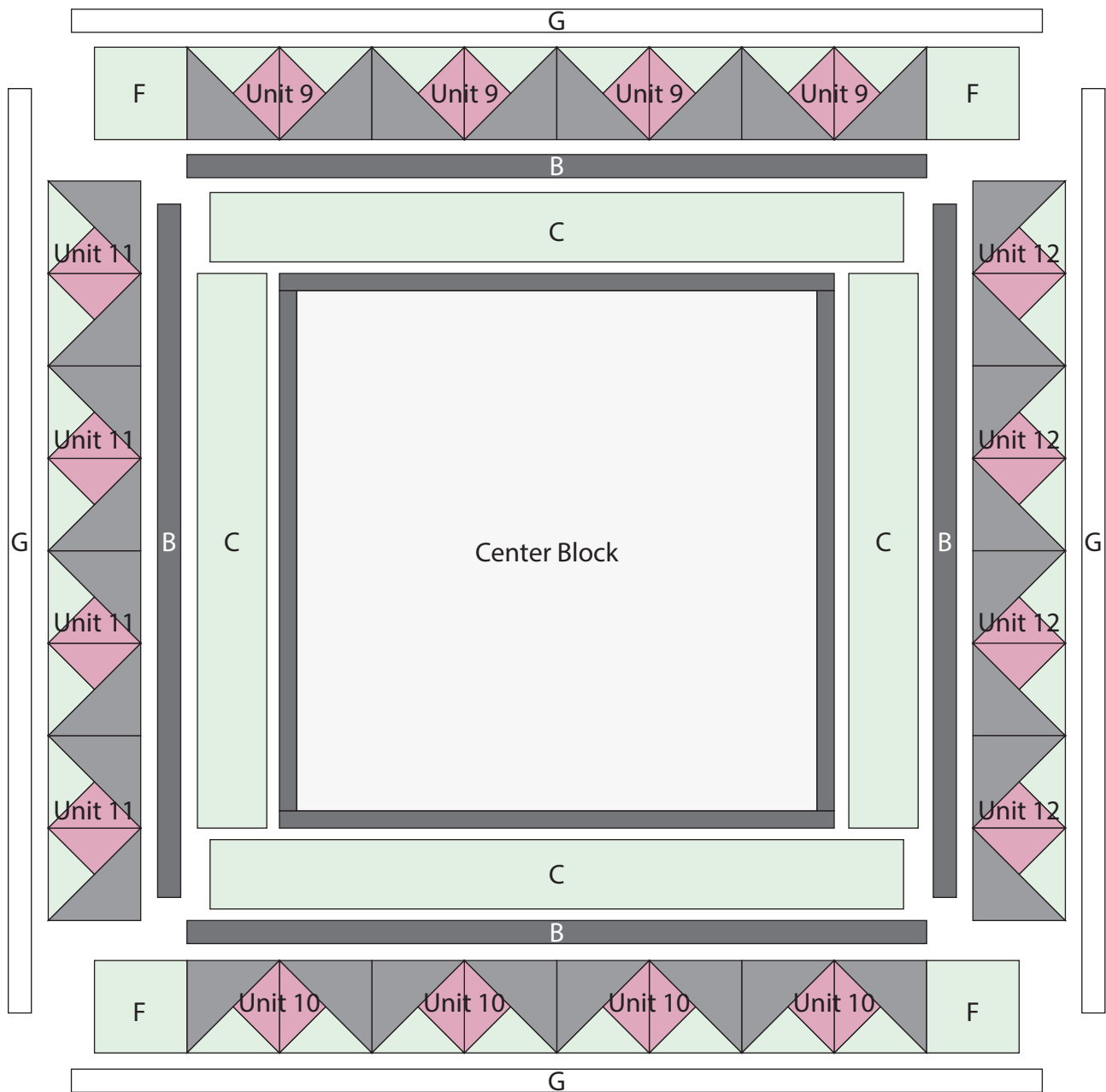


Fig. 13

Quilt Top Assembly

(Follow the Quilt Layout while assembling the quilt top.)

9. Sew one 3 ½" x 24 ½" Fabric C strip to each side of the Center Block. Sew one 3 ½" x 30 ½" Fabric C strip to the top and to the bottom of the Center Block.
10. Sew one 1 ½" x 30 ½" Fabric B strip to each side of the Center Block. Sew one 1 ½" x 32 ½" Fabric B strip to the top and to the bottom of the Center Block.
11. Sew together four Unit 11 strips to make one Left Side Border Strip. Pay attention to the unit orientations. Sew the strip to the left side of the Center Block. Sew together four Unit 12 strips to make one Right Side Border Strip. Pay attention to the unit orientations. Sew the strip to the right side of the Center Block.
12. Sew together two 4 ½" Fabric F squares and four Unit 9 strips to make one Top Border Strip. Pay attention to the unit orientations. Sew the Top Border Strip to the top of the Center Block. Sew together two 4 ½" Fabric F squares and four Unit 10 strips to make one Bottom Border Strip. Pay attention to the unit orientations. Sew the Bottom Border Strip to the bottom of the Center Block.
13. Sew one 1 ½" x 40 ½" Fabric G strip to each side of the Center Block. Sew one 1 ½" x 42 ½" Fabric G strip to the top and to the bottom of the Center Block to make the quilt top.
14. Layer and quilt as desired.
15. Sew the five 2 ½" x WOF Fabric B strips together, end-to-end with 45-degree seams, to make the binding. Fold this long strip in half lengthwise with wrong sides together and press.
16. Bind as desired.



Quilt Layout