

michael miller FABRICS

TRUCKS, CARS, & PLANES Quilt

Size: 41" x 54" | Design by: Marinda Stewart | Level: CONFIDENT BEGINNER



Free Pattern available on michaelmillerfabrics.com



FABRIC REQUIREMENTS



CX7653 Blue
Endless Road Border
1 yard



CX4760 Blue
Toot Toot
1 yard



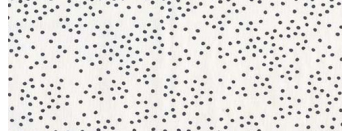
CX3584 Red
Clown Stripe
1 yard



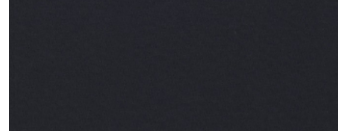
CX7651 Blue
Move Along
1/2 yard



CX7652 Blue
Dudes
3/8 yard



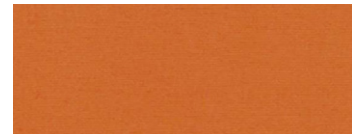
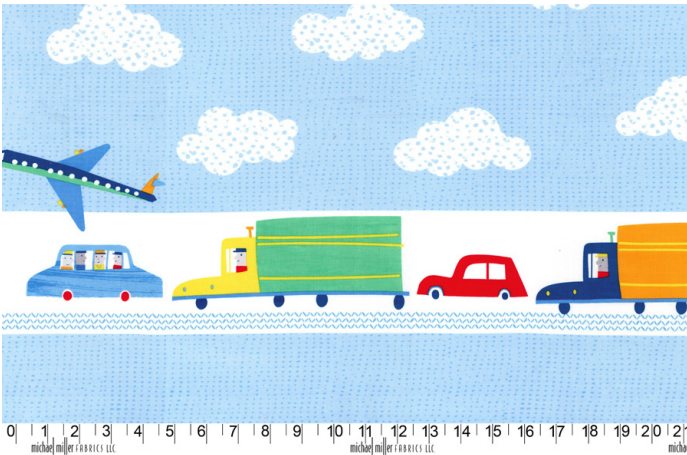
DC7818 Marine
Glade Glimmer
1/2 yard



SC5333 Charcoal
Cotton Couture
1/8 yard



SC5333 Cherry
Cotton Couture
6" x 12" Piece



SC5333 Apricot
Cotton Couture
6" x 12" Piece

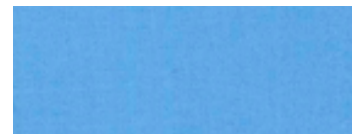


SC5333 Yellow
Cotton Couture
6" x 12" Piece

Kit Info	12 Kits	24 Kits
CX7653 Blue	12 yards (1 bolt)	24 yards (2 bolts)
CX4760 Blue	12 yards (1 bolt)	24 yards (2 bolts)
CX3584 Red	12 yards (1 bolt)	24 yards (2 bolts)
CX7651 Blue	6 yards (1 bolt)	12 yards (1 bolt)
CX7652 Blue	4 1/2 yards (1 bolt)	9 yards (1 bolt)
DC7818 Marine	6 yards (1 bolt)	12 yards (1 bolt)
SC5333 Charcoal	1 1/2 yards (1 bolt)	3 yards (1 bolt)
SC5333 Cherry	3/4 yard (1 bolt)	1 1/2 yards (1 bolt)
SC5333 Apricot	3/4 yard (1 bolt)	1 1/2 yards (1 bolt)
SC5333 Yellow	3/4 yard (1 bolt)	1 1/2 yards (1 bolt)
SC5333 Green	3/4 yard (1 bolt)	1 1/2 yards (1 bolt)
SC5333 Cornflower	3/4 yard (1 bolt)	1 1/2 yards (1 bolt)
CX4760 Brite (Backing)	30 yards (2 bolts)	60 yards (4 bolts)



SC5333 Green
Cotton Couture
6" x 12" Piece



SC5333 Cornflower
Cotton Couture
6" x 12" Piece



CX4760 Brite
Toot Toot
2 1/2 yards

Trucks, Cars, and Planes
Quilt designed by Marinda Stewart
Size: 41" W x 54" L
Skill Level: Confident Beginner

Fabrics	Yardage	Cutting
CX7653 Blue Endless Road Border	1 yard	(1) 10 1/2" x 35 1/2" center on motif (2) 5" x 35 1/2" (clouds only)
CX4760 Blue Toot Toot	1 yard	(2) 3" H x 35 1/2" W (4) 3" squares (2) 3" W x 48 1/2" H * (Cut Vertically)
CX3584 Red Clown Stripe	1 yard	(10) 1" x 35 1/2" (4) 3" squares (2) 1" x 54 1/2" * (5) 2 1/2" x W.O.F. - binding
CX7651 Blue Move Along	1/2 yard	(2) 7 1/2" x 35 1/2" (2) Fussy-Cut planes
CX7652 Blue Dudes	3/8 yard	(2) 3" x 35 1/2" * (20) 1 1/2" squares *
DC7818 Marine Glade Glimmer	1/2 yard	(10) 1 1/2" x 7 1/2" (10) 1" x 4" (20) 2 1/2" x 2 1/4" (20) 1 1/2" x 2"
SC5333 Charcoal Cotton Couture	1/8 yard	(20) 2" circles Yo-Yo Or (20) 1" circles - applique
SC5333 Cherry Cotton Couture	6" x 12" piece of each color	(1) 5 1/2" x 2" (3) 1" x 1 1/2" (1) 1" x 4" of each color
SC5333 Apricot Cotton Couture		
SC5333 Yellow Cotton Couture		
SC5333 Green Cotton Couture		

SC5333 Cornflower Cotton Couture		
Backing Optional: CX4760 Brite Toot Toot	2 1/2 yards	(1) 60" x W.O.F. (2) 22" W x 30" H
Also Needed: Batting 45" x 60", threads to match, scissors, straight pins, rotary cutter, acrylic ruler, mat, hand sewing needle, and fusible web.		
* Pieced for length		

Directions:

1. For one 5" x 7 1/2" car block - sew together (3) 1" x 1 1/2" red pieces alternating with (2) CX7652 1 1/2" squares as shown, keep motif upright. Sew (1) Red 1" x 4" piece to the top of the pieced strip. Sew one DC7818 1" x 4" piece to the top of the red. Sew (1) DC7818 2 1/2" x 2 1/4" piece to each side as shown. Set aside. Sew one DC7818 1 1/2" x 2" piece to each end of one Red 5 1/2" x 2" piece. Sew one DC7818 1 1/2" x 7 1/2" piece to the bottom. Sew completed unit to the bottom of the first unit to complete the car. Make (2) cars of each color - Red, Apricot, Yellow, Green, Cornflower. Set aside.

Note: Wheels are made of Yo-Yo's and applied after quilt is quilted. If Yo-Yo's are not used, use 1" circle pattern and cut (20) SC5333 Charcoal circles, Back with fusible web and iron in place. Machine stitch raw edges as shown BEFORE blocks are sewn into the quilt.

2. To assemble the quilt from the top down row by row -

- (1) CX4760 3" x 35 1/2"
- (1) CX3584 1" x 35 1/2"
- (1) CX7651 7 1/2" x 35 1/2"
- (1) CX3584 1" x 35 1/2"
- (5) cars, one of each color sewn into a 35 1/2" strip
- (1) CX3584 1" x 35 1/2"
- (1) CX7653 5" x 35 1/2" (clouds only)
- (1) CX3584 1" x 35 1/2"
- (1) CX7652 3 1/2" x 35 1/2" (3" x 35 1/2") (keep motifs upright)
- (1) CX3584 1" x 35 1/2"
- (1) CX7653 10 1/2" x 35 1/2" border
- (1) CX3584 1" x 35 1/2"
- (1) CX7652 3 1/2" x 35 1/2"
- (1) CX3584 1" x 35 1/2"
- (1) CX7653 4 1/2" x 35 1/2" (clouds only)

(1) CX3584 1" x 35 1/2"
 (1) 5 car strip
 (1) CX3584 1" x 35 1/2"
 (1) CX7651 7 1/2" x 35 1/2"
 (1) CX3584 1" x 35 1/2"
 End with (1) CX4760 3" x 35 1/2"

3. Sew one CX3584 1" x 3" piece to the bottom of (2) CX4760 3" squares and one CX3584 1" x 3" piece to the top of (2) CX4760 3" squares. Keep motifs upright. Sew one square of each to the top and bottom of each CX4760 3" W x 48 1/2" H (pieced for length) strip as shown. Sew one strip to each side of the quilt matching the CX3584 pieces.
4. Fussy-cut (2) planes from CX7657. Back with fusible web. Iron onto each cloud strip as shown. Machine stitch the edges to finish.
5. For the backing - trim selvages from CX4720 Yellow. Sew with right sides together (2) 22" W x 30" H pieces to make (1) 22" x 59 1/2" strip. Sew strip to one side of the 60" x W.O.F. pieces. Keep motifs upright.
6. Layer backing, batting, and quilt top. Baste.
7. Quilt as desired.
8. Bind quilt using CX3584 2 1/2" strips, pieced as needed for length.
9. For the Yo-Yo tires - thread a hand sewing needle. Knot the thread. Turn under a scant 1/8" edge of a 2" charcoal circle. Sew a gathering or running stitch through the folded edge around the entire circle. Pull thread tightly to gather. Knot off. One tire made. Make (20) total. Hand sew (2) tires to each car as shown.

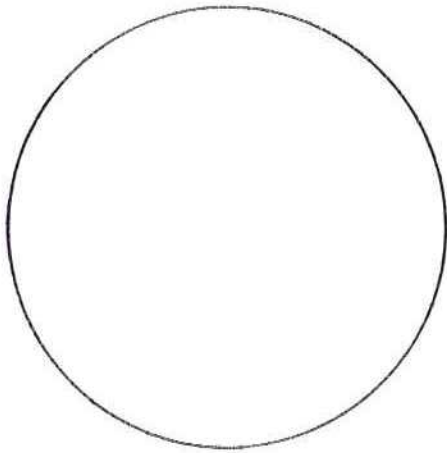
Kit Info

	12 Kits	24 Kits
CX7653 Blue	12 yards or (1) bolt	24 yards or (2) bolts
CX4760 Blue	12 yards or (1) bolt	24 yards or (2) bolts
CX3584 Red	12 yards or (1) bolt	24 yards or (2) bolts
CX7651 Blue	6 yards or (1) bolt	12 yards or (1) bolt
CX7652 Blue	4 1/2 yards or (1) bolt	9 yards or (1) bolt

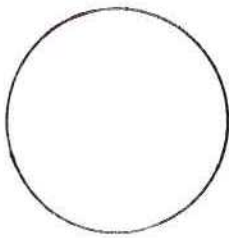
DC7818 Marine	6 yards or (1) bolt	12 yards or (1) bolt
SC5333 Charcoal	1 1/2 yards or (1) bolt	3 yards or (1) bolt
SC5333 Cherry	3/4 yards or (1) bolt	1 1/2 yards or (1) bolt
SC5333 Apricot	3/4 yards or (1) bolt	1 1/2 yards or (1) bolt
SC5333 Yellow	3/4 yards or (1) bolt	1 1/2 yards or (1) bolt
SC5333 Green	3/4 yards or (1) bolt	1 1/2 yards or (1) bolt
SC5333 Cornflower	3/4 yards or (1) bolt	1 1/2 yards or (1) bolt
Optional Backing CX4760 Brite	30 yards or (2) bolts	60 yards or (4) bolts

PATTERNS

"Trucks, Cars and Planes"



cut 20 - use for yo-yo tires



cut 20 - use for appliqued tires