

“Flower Shop” Cacti Pattern Bundle

by Patty Sloniger



3 Basic Patterns
in Multiple Sizes



Patterns Included:



- 1** - Large Scalloped Cactus (A - 1 size)
- 2** - Squatty Round Cacti (B,C,D - 3 sizes)
- 3** - Snake Plants (E,F - 2 sizes)

Ideas for customizing/embellishing your cacti:

- Glue on multiple, mini artificial blooms
- Push in decorative glass head pins for a spiny effect
- Attach one large flower on top
- Glue on random mini felt tassels
- Cut your pattern pieces from patchwork panels (see cover).

Large Scalloped Cactus

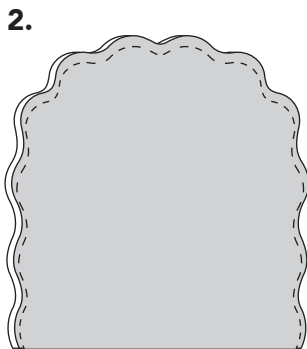
*NOTE: This pattern utilizes half size templates when necessary to fit on a printable 8.5" x 11" page. They are meant to be aligned on the folded edge of a piece of fabric, traced, cut and opened to full size. You could alternatively make your own full size template by tracing the half size template onto a folded piece of cardstock then cutting and opening.

Using a smaller stitch makes navigating the curves easier and your seams stronger when stuffing.

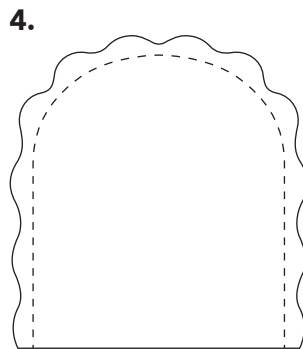
Backstitch at the beginning and end of each line of stitching.

Directions:

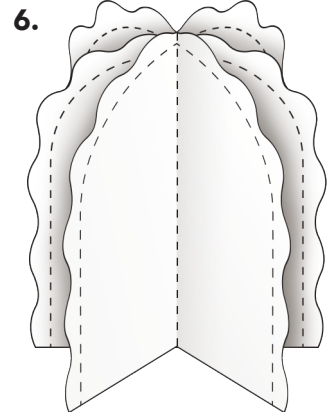
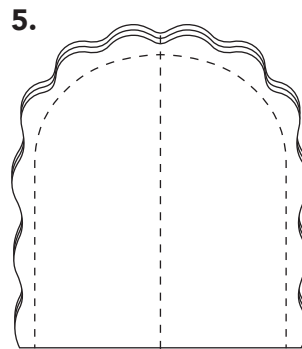
1. Cut out a total of 6 pieces of fabric using **Template A1**. You can use the half size templates to cut out one piece of fabric at a time as mentioned above, or you can use my preferred method which is to cut two layers of fabric at a time using a full size template. If you layer your fabrics RST (right sides together) then your pieces are already perfectly aligned and ready to pin once cut out.
2. With RST, pin and sew along outer wavy edge of each pair of fabric pieces using a 1/4" seam, leaving bottom edge open.
3. I didn't clip my seams and just turned it right side out and pressed. If you find your seams to be too bulky, you can clip the curves, or trim the fabric back a bit closer to the seams first.
4. Using **Template A2**, align bottom edges and center left to right with the pieces you just turned right side out. Trace along the sides and curved edges of the template piece directly onto your fabric (yes, it will be on the right side of the fabric), then stitch along the drawn line. This stitching will be visible, so choose a contrast color for interest or a similar color if you want it to blend in. Repeat with all 3 segments.
5. Layer the 3 segments on top of each other, aligning as evenly as possible. You are going to be sewing a straight line down the center of this fabric stack. I just eyeballed mine and used a length of washi tape (or you could use painters or masking tape) to mark the center. Then I pinned and sewed along the edge of the tape, using it as my guide.
6. You now have 6 equal segments. Stuff as desired with the filling of your choice. I left the bottoms open/unfinished as I planned to put them in pots and knew they wouldn't be seen.



(right sides together)



After turning right side out



A large, vertically oriented pattern piece with a scalloped right edge and a straight left edge. The left edge has two arrows pointing left, one near the top and one near the bottom, with the word 'FOLD' written vertically between them. In the center, there is a square box containing the text 'A1'. Below the box, the text 'Large Scalloped Cactus (Outer Seam)' is written. Further down, the text 'Cut a Total of 6 Pieces' and '1/4" seam allowance' are written. At the bottom, the text 'Bottom Edge - Leave Open' is written. At the very bottom, there is a copyright notice: '©2018 PattySloniger www.pattysloniger.com'.

A1

Large Scalloped
Cactus
(Outer Seam)

*Cut a Total
of 6 Pieces*

1/4" seam allowance

©2018 PattySloniger
www.pattysloniger.com

Bottom Edge - Leave Open

A diagram of a template for a large scalloped cactus. The template is a vertical rectangle with a dashed line along the top and right edges, indicating where to cut. A solid line runs along the left and bottom edges. On the left side, there are two arrows pointing left, one at the top and one at the bottom, with the word "FOLD" written vertically between them. In the center, there is a square box containing the text "A2". Below the box, the text "Large Scalloped Cactus (Inner Seam Template)" is written. Further down, the text "Use to Mark - Do Not Cut!" is written in italics. At the bottom center, the text "Bottom Edge - Leave Open" is written in italics. At the bottom right, there is a copyright notice: "©2018 PattySloniger www.pattysloniger.com".

A2

Large Scalloped
Cactus
(Inner Seam Template)

Use to Mark -
Do Not Cut!

©2018 PattySloniger
www.pattysloniger.com

Bottom Edge - Leave Open

Squatty Round Cacti - **B, C & D**

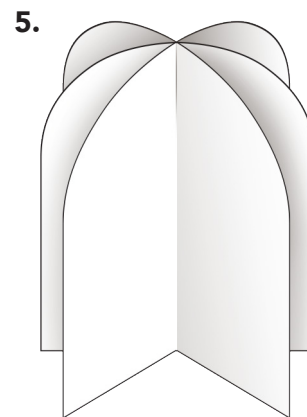
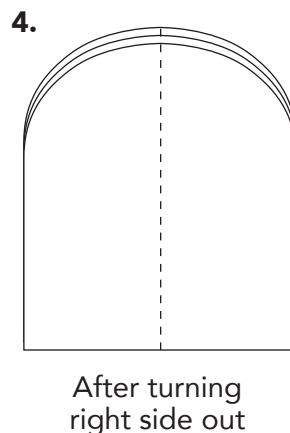
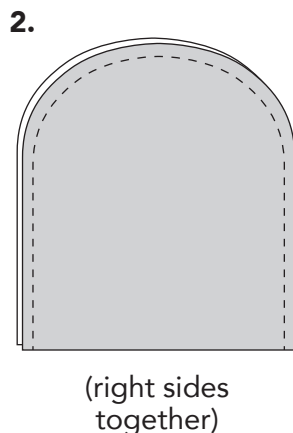
*NOTE: Customize these patterns to be as taller or shorter by adjusting the length of the straight side edges, making sure all 3 segments are the same height.

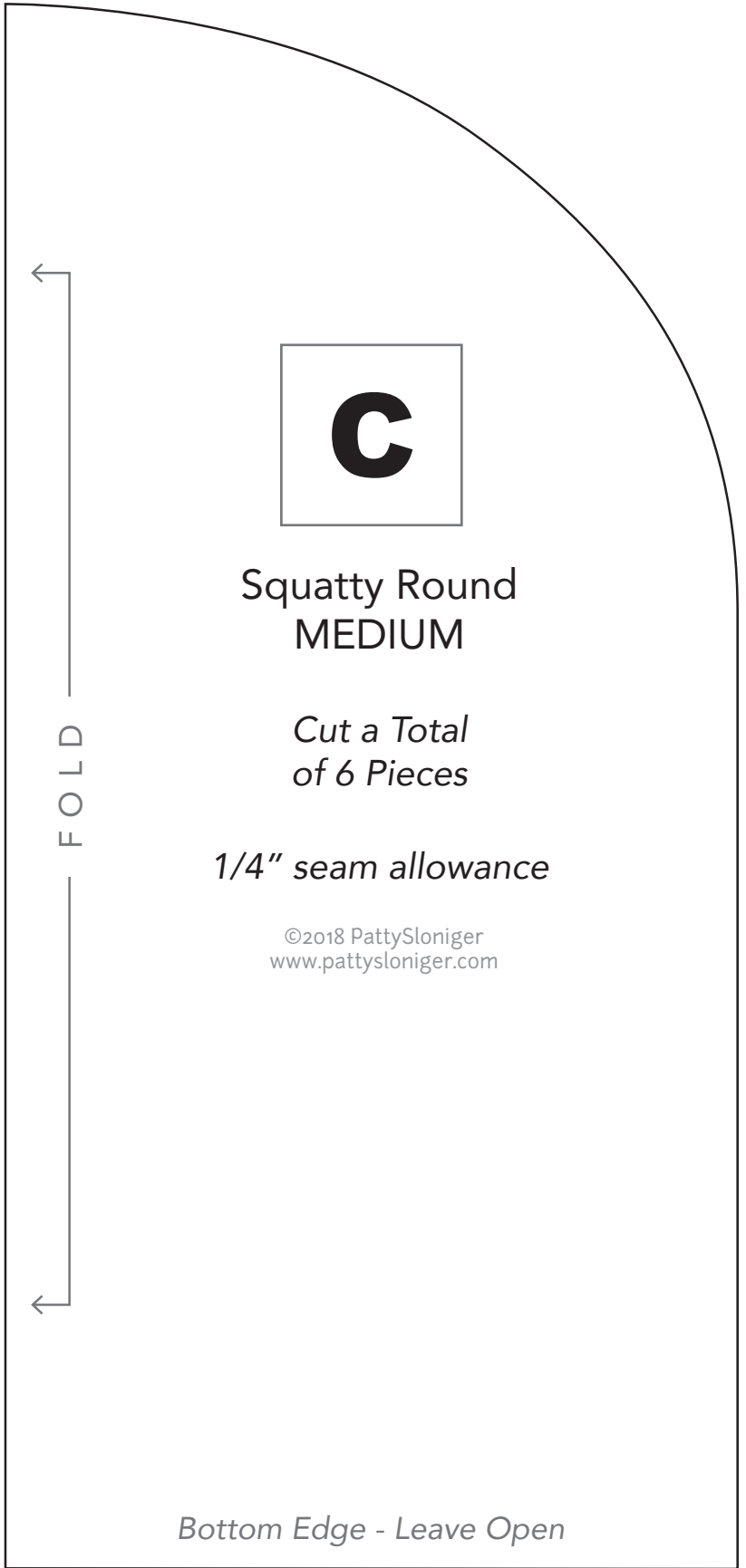
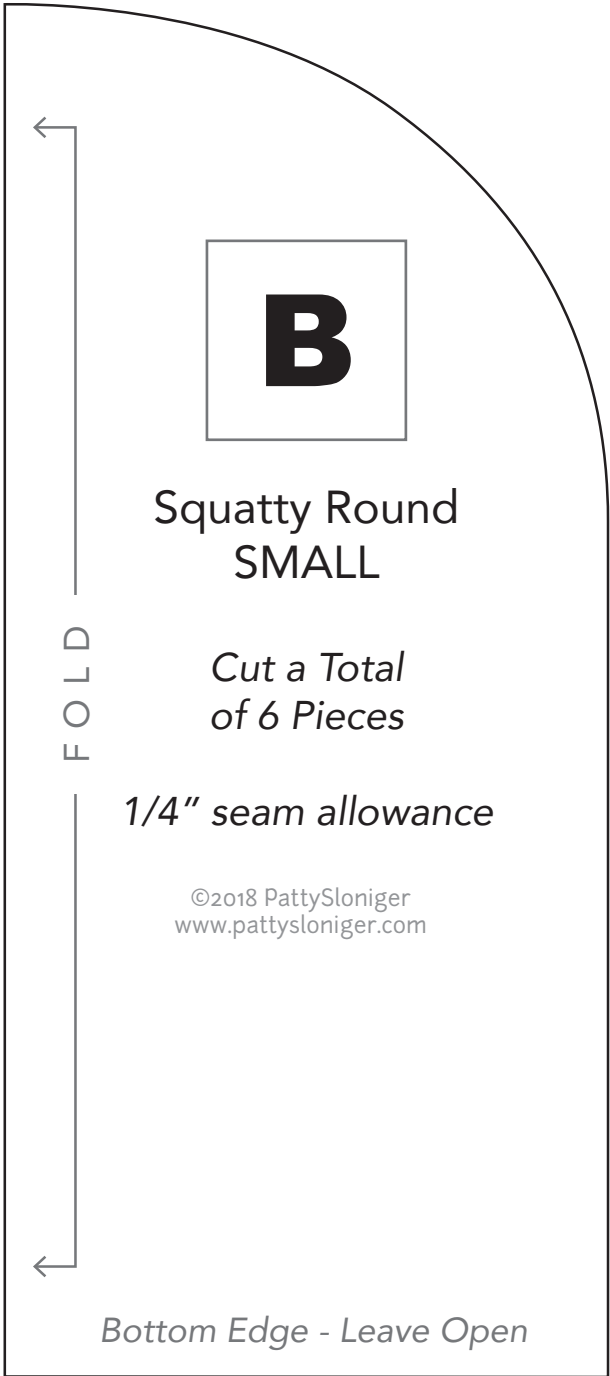
This pattern utilizes half size templates to fit on a printable 8.5" x 11" page. They are meant to be aligned on the folded edge of a piece of fabric, traced, cut and opened to full size. You could alternatively make your own full size template by tracing the half size template onto a folded piece of cardstock then cutting and opening.

Backstitch at the beginning and end of each line of stitching.

Directions:

1. Cut out a total of 6 pieces of fabric using **Template B, C or D**. You can use the half size templates to cut out one piece of fabric at a time as mentioned above, or you can use my preferred method which is to cut two layers of fabric at a time using a full size template. If you layer your fabrics RST (right sides together) then your pieces are already perfectly aligned and ready to pin once cut out.
2. With RST, pin and sew along sides and top edge of each pair of fabrics using a 1/4" seam, leaving bottom edge open.
3. I didn't clip my seams and just turned my pieces right side out and pressed. If you find your seams to be too bulky, you can clip the curves, or trim the fabric back a bit closer to the seams first.
4. Layer the 3 segments on top of each other, aligning as evenly as possible. You are going to be sewing a straight line down the center of this fabric stack. I just eyeballed mine and used a length of washi tape (or you could use painters or masking tape) to mark the center. Then I pinned and sewed along the edge of the tape, using it as my guide.
5. Stuff as desired with the filling of your choice. I left the bottoms open/unfinished as I planned to put them in pots and knew they wouldn't be seen.







Squatty Round
LARGE

*Cut a Total
of 6 Pieces*

1/4" seam allowance

©2018 PattySloniger
www.pattysloniger.com



FOLD



Bottom Edge - Leave Open

Snake Plant - E & F

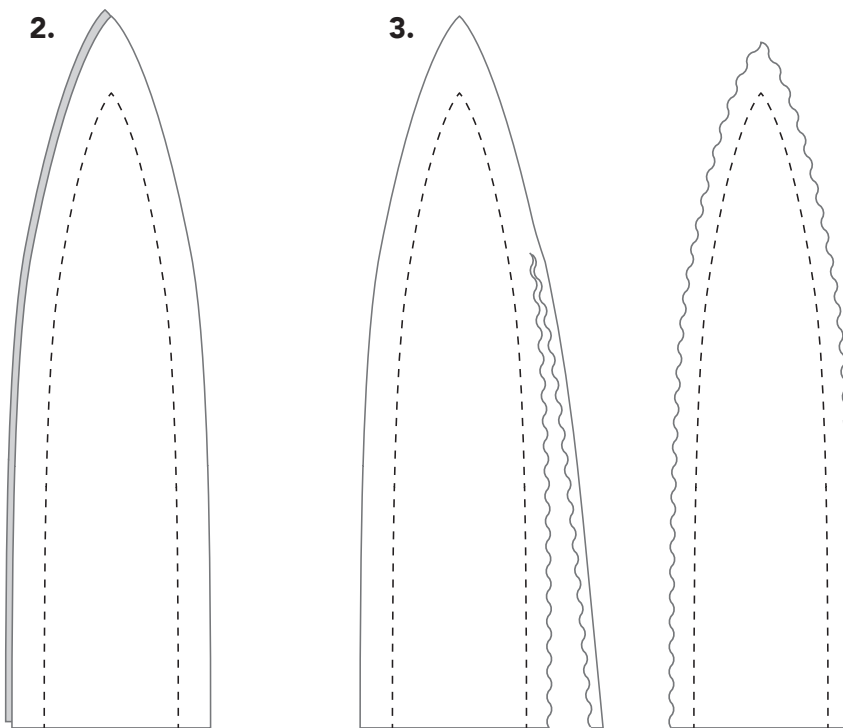
*NOTE: You can customize these patterns to be taller or shorter by adjusting the length of the straight side edges. Mix and match sizes to make your own custom snake plant. How many of these you make will depend on how big your pot is.

These pattern pieces are larger than can be printed on an 8.5" x 11" sheet. Cut them out and tape together after aligning coordinating edges.

Backstitch at the beginning and end of each line of stitching.

Directions:

1. Cut out 2 pieces of fabric using **Template E or F**. If you layer your pieces WST (wrong sides together) then they are already perfectly aligned and ready to pin once cut out.
2. With WST, pin and sew along sides of each pair of fabrics using a 3/4" seam, leaving bottom edge open. This stitching will be visible, so choose a contrast color for interest or a similar color if you want it to blend in.
3. Using pinking shears or a rotary cutter fitted with a pinking or scalloped blade, trim the straight edge off the seam allowance leaving a decorative edge.
4. Stuff as desired with the filling of your choice. I left the bottoms open/unfinished as I planned to put them in pots and knew they wouldn't be seen.
5. Repeat to make as many as needed to fill your pot.



(wrong sides
together)

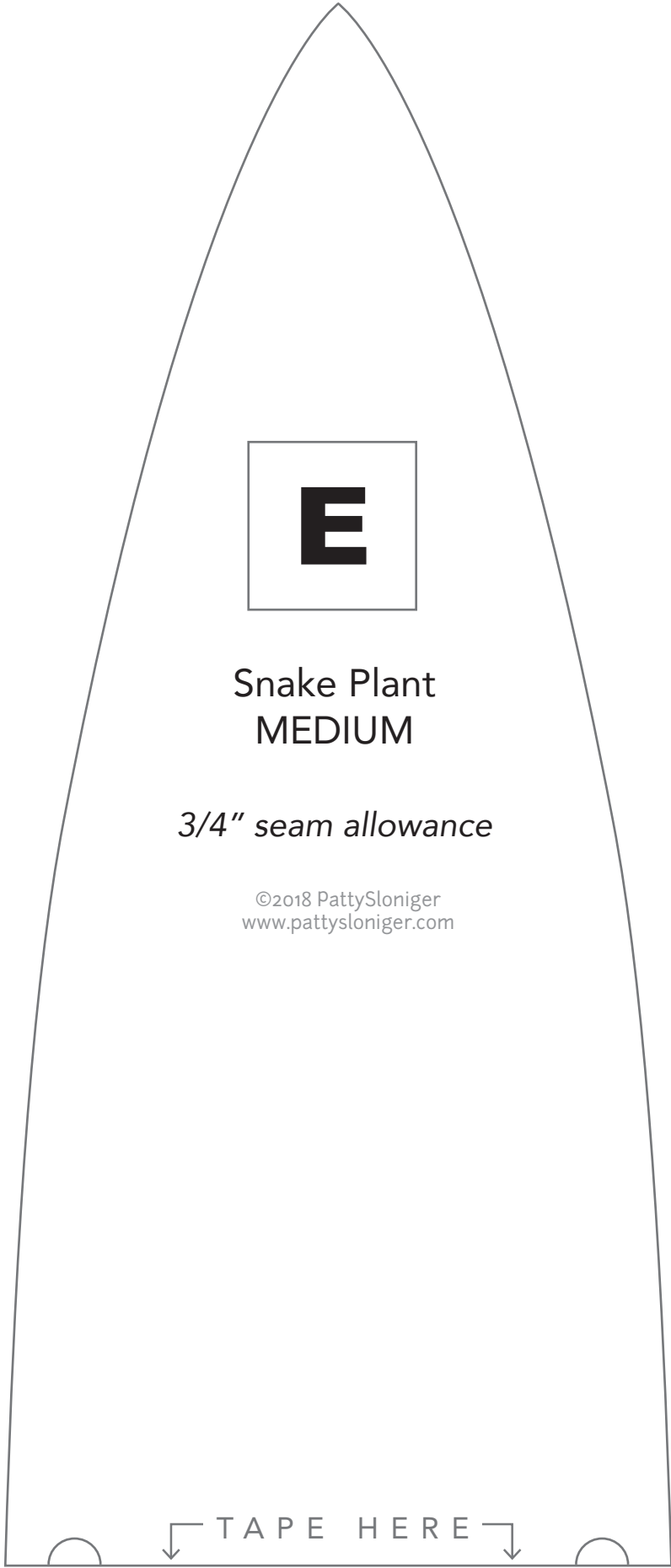


Snake Plant
MEDIUM

3/4" seam allowance

©2018 PattySloniger
www.pattysloniger.com

T A P E H E R E



↑ TAPE HERE ↑



Snake Plant
MEDIUM



Snake Plant
LARGE

3/4" seam allowance

©2018 PattySloniger
www.pattysloniger.com



TAPE HERE





↑ TAPE HERE ↑



Snake Plant
LARGE

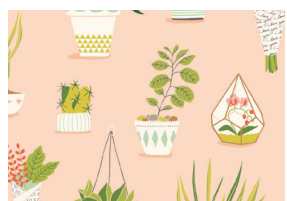


Flower Shop

by Patty Sloniger for

michael miller FABRICS

★ Fabrics Used in Pattern Samples



DC7821-BLOS-D
pretty plants



★ **DC7821-SPRO-D**
pretty plants



★ **DC7822-GRAS-D**
to market



★ **DC7822-SKYX-D**
to market



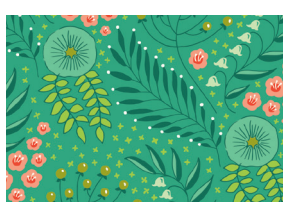
★ **DC7859-LAWN-D**
it can be arranged



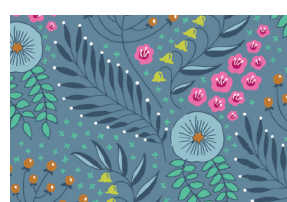
DC7859-PERI-D
it can be arranged



DC7820-PERI-D
bloomin' times



★ **DC7823-GRAS-D**
botanika



★ **DC7823-PERI-D**
botanika



DC7824-CORA-D
bouquet making



★ **DC7824-MOSS-D**
bouquet making



DC7820-MIST-D
bloomin' times



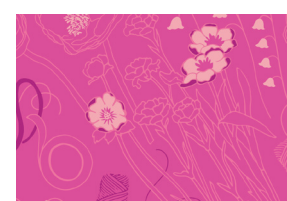
DC7825-BLOS-D
tin ceiling



DC7825-PERI-D
tin ceiling



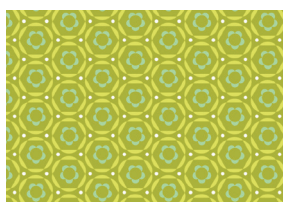
★ **DC7824-NAVY-D**
bouquet making



DC7824-RASP-D
bouquet making



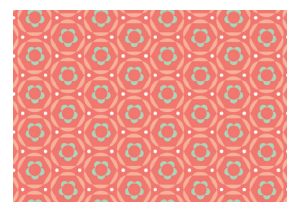
DC7827-PERI-D
posy



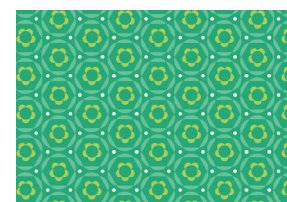
★ **DC7826-MOSS-D**
hexy bloom



DC7826-RASP-D
hexy bloom



DC7826-CORA-D
hexy bloom



★ **DC7826-LAWN-D**
hexy bloom



DC7827-BLOS-D
posy