

michael miller FABRICS

PRANCING DEER *Quilt*

Size: 41"W x 60"H | Designed by: Marinda Stewart | Level: Confident Beginner



FREE PATTERN AVAILABLE ON MICHAELMILLERFABRICS.COM



FABRIC REQUIREMENTS



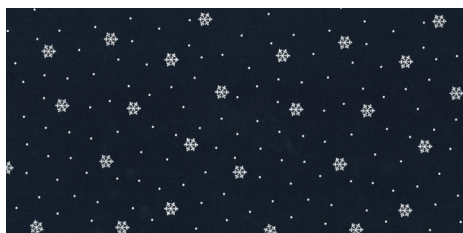
**CX7283 CELESTIAL
PRANCING DEER BORDER**
2/3 YARD



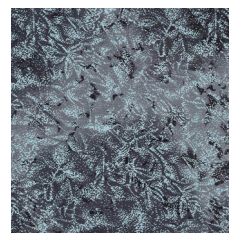
**CX7281 CELESTIAL
POLAR**
1/4 YARD



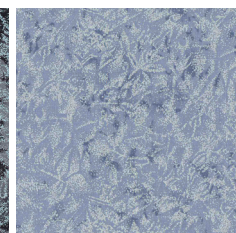
**CX7282 CELESTIAL
CHILLY**
1/6 YARD



**CX7285 MIDNITE
SNOWBOUND**
1/6 YARD



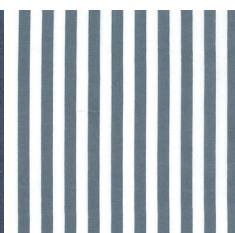
**CM0376 CHARCOAL
FAIRY FROST**
1/2 YARD



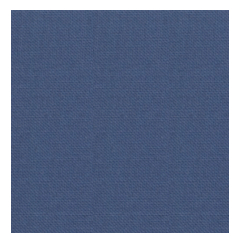
**CM0376 FOG
FAIRY FROST**
1/6 YARD



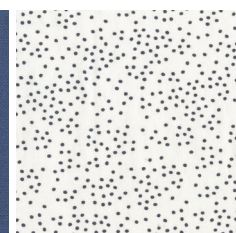
**SC5333 GRAPHITE
COTTON COUTURE**
1/2 YARD



**CX3584 GRAY
CLOWN STRIPE**
1/4 YARD



**SC5333 DENIM
COTTON COUTURE**
1/4 YARD



**DC7818 MARINE
GLADE GLIMMER**
3/8 YARD

FABRIC REQUIREMENTS

SKU	YARDAGE PER ONE QUILT	# OF BOLTS FOR 12 KITS	# OF BOLTS FOR 24 KITS
(A) CX7283 CELESTIAL	2 / 3 YARD	1 BOLT (8 YARDS)	2 BOLTS (16 YARDS)
(B) CM0376 CHARCOAL	1 / 2 YARD	1 BOLT (6 YARDS)	1 BOLT (12 YARDS)
(C) SC5333 GRAPHITE	1 / 2 YARD	1 BOLT (6 YARDS)	1 BOLT (12 YARDS)
(D) SC5333 DENIM	1 / 4 YARD	1 BOLT (3 YARDS)	1 BOLT (6 YARDS)
(E) CX7281 CELESTIAL	1 / 4 YARD	1 BOLT (3 YARDS)	1 BOLT (6 YARDS)
(F) CX7282 CELESTIAL	1 / 6 YARD	1 BOLT (2 YARDS)	1 BOLT (4 YARDS)
(G) CX3584 GRAY	1 / 4 YARD	1 BOLT (3 YARDS)	1 BOLT (6 YARDS)
(H) CM0376 FOG	1 / 6 YARD	1 BOLT (2 YARDS)	1 BOLT (4 YARDS)
(I) CX7285 MIDNITE	1 / 6 YARD	1 BOLT (2 YARDS)	1 BOLT (4 YARDS)
(J) DC7818 MARINE	3 / 8 YARD	1 BOLT (4 - 1 / 2 YARDS)	1 BOLT (9 YARDS)
(BACKING) CX7281 CELESTIAL	2 - 7 / 8 YARDS	3 BOLTS (34 - 1 / 2 YARDS)	5 BOLTS (69 YARDS)
TOTAL BOLTS NEEDED		13 BOLTS (10 W / O BACK)	16 BOLTS (11 W / O BACK)

WE DO OUR BEST TO MAKE SURE THESE ARE ACCURATE YARDAGES BUT THESE ARE ESTIMATES UNTIL THE FINAL PATTERN IS COMPLETED AND EDITED. THANK YOU.

p.212.704.0774 | info@michaelmillerfabrics.com | www.michaelmillerfabrics.com

Prancing Deer Quilt
Designed by Marinda Stewart
Skill Level: Confident Beginner
Size: 41" x 60"

Fabrics	Yardage	Cutting
CX7283 Celestial Prancing Deer Border	2/3 yard *	(1) 23 1/2" W x 42 1/2" H **
CM0376 Charcoal Fairy Frost	1/2 yard	(2) 2 1/2" x 37 1/2" (2) 2 1/2" x 60 1/2" ***
SC5333 Graphite Cotton Couture	1/2 yard	(5) 2 1/2" x W.O.F. - binding (2) 1 1/2" x 37 1/2"
SC5333 Denim Cotton Couture	1/4 yard	(3) 2 1/2" x W.O.F. Subcut into (48) 2 1/2" squares
CX7281 Celestial Polar	1/4 yard	(2) 3 1/2" x 37 1/2"
CX7282 Celestial Chilly	1/6 yard	(2) 2 1/2" x 37 1/2"
CX3584 Gray Clown Stripe	1/4 yard	(2) 1 1/2" x 42 1/2" (2) 1 1/2" x 37 1/2"
CM0376 Fog Fairy Frost	1/6 yard	(2) 2 1/2" x W.O.F. Subcut into (32) 2 1/2" squares
CX7285 Midnite Snowbound	1/6 yard	(2) 2 1/2" x W.O.F. Subcut into (32) 2 1/2" squares
DC7818 Marine Glade Glimmer	3/8 yard	(14) 2 1/2" square (4) 1 1/2" x W.O.F. Subcut into (112) 1 1/2" square
OPTIONAL for Backing CX7281 Celestial Polar	2 7/8 yards	(1) 68" x W.O.F. (2) 36" H x 22" W
Also Needed: 45" x 65" batting, thread to match, scissors, straight pins, rotary cutter, acrylic		

ruler, and mat.

* Or amount needed for a complete repeat

** Center on motif

*** Pieced for length

Directions:

1. For one star block: Place one DC7818 1 1/2" square, right side together, on top of one corner of one SC5333 Denim 2 1/2" square diagonally from the outer corner to the inside corner. Press. Trim excess from the back. Repeat for the other corner as shown. Make (4) 2 1/2" square pieces. To assemble the block - sew one pieced unit to the top and bottom of one DC7818 2 1/2" square. Set aside. Sew one SC5333 Denim 2 1/2" square to each side of one pieced unit as shown. Make (2). Sew one unit to each side of the center DC7818 unit to make a 6 1/2" star block. Make (6) SC5333 Denim star blocks. Make (4) CX7285 6 1/2" star blocks. Make (4) CM0376 Fog 6 1/2" star blocks as shown.
2. Sew together (2) CX7285 Star blocks, (3) SC5333 Denim star blocks, and (2) CM0376 Fog star blocks into one 42 1/2" row. Make two. Set aside.
3. Sew one CX3584 1 1/2" x 42 1/2" piece to each side of the CX7283 center panel.
4. Sew one 6 1/2" x 42 1/2" star block row to each side of the center panel, keeping the darkest blocks at the top of the panel as shown.
5. Sew one CX3584 1 1/2" x 37 1/2" piece to the top and bottom of the quilt.
6. Sew one CX7282 2 1/2" x 37 1/2" to the top and bottom of the quilt. Keep motifs upright.
7. Sew SC5333 Graphite 1 1/2" x 37 1/2" piece to the top and bottom of the quilt.
8. Sew one CX7281 3 1/2" x 37 1/2" piece to the top and bottom of the quilt. Keep motifs upright.
9. Sew one CM0376 Charcoal 2 1/2" x 37 1/2" piece to the top and bottom of the quilt.
10. Sew one CM0376 Charcoal 2 1/2" x 60 1/2" piece (pieced for length) to each side of the quilt.
11. For the backing - trim selvage edges from the fabric. Sew one CX7281 - 36" x 22" piece end to end to make one 71 1/2" x 22" strip. Keep motifs upright. Sew strip to one side of the 68" x W.O.F. piece. Trim fabric to 50" x 68" for backing.

12. Layer backing, batting, and quilt top. Baste.
13. Quilt as desired.
14. Bind quilt using SC5333 Graphite 2 1/2" strips, pieced as needed for length.

Kit Information

	12 Kits	24 Kits
CX7283 Celestial	8 yards or (1) bolt	16 yards or (2) bolts
CM0376 Charcoal	6 yards or (1) bolt	12 yards or (1) bolt
SC5333 Graphite	6 yards or (1) bolt	12 yards or (1) bolt
SC5333 Denim	3 yards or (1) bolt	6 yards or (1) bolt
CX7281 Celestial	3 yards or (1) bolt	6 yards or (1) bolt
CX7282 Celestial	2 yards or (1) bolt	4 yards or (1) bolt
CX3584 Gray	3 yards or (1) bolt	6 yards or (1) bolt
CM0376 Fog	2 yards or (1) bolt	4 yards or (1) bolt
CX7285 Midnite	2 yards or (1) bolt	4 yards or (1) bolt
DC7818 Marine	4 1/2 yards or (1) bolt	9 yards or (1) bolt
Recommended Backing CX7281 Celestial	34 1/2 yards or (3) bolts	69 yards (5) bolts