

michael miller FABRICS

# LITTLE AURORA BOREALIS Quilt

Size: 40" x 56" | Design by: Marinda Stewart | Level: CONFIDENT BEGINNER



Free Pattern available on [michaelmillerfabrics.com](http://michaelmillerfabrics.com)





# FABRIC REQUIREMENTS



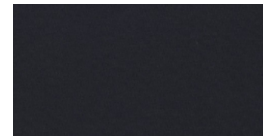
CX7644 Sorbet  
7/8 yard



CX6574 Lipstick  
7/8 yard



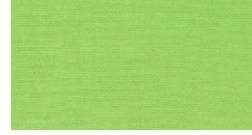
CX6574 Fuchsia  
1/2 yard



SC5333 Charcoal  
1/2 yard



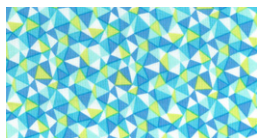
CX6699 Aqua  
Fat 1/8



SC5333 Fern  
Fat 1/8



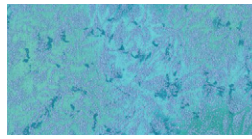
SC5333 Luna  
Fat 1/8



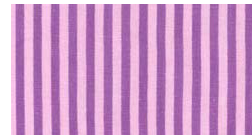
CX7476 Stream  
Fat 1/8



CX6574 Limeade  
Fat 1/8



CM0376 Mermaid  
Fat 1/8



CX6574 Grape  
Fat 1/8



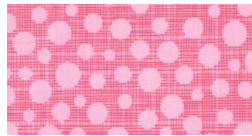
SC5333 Rose  
Fat 1/8



SC5333 Princess  
Fat 1/8



CM0376 Pink  
Fat 1/8



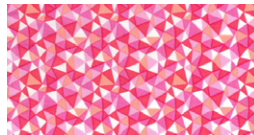
CX6699 Pink  
Fat 1/8



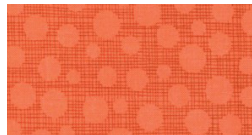
SC5333 Peach  
Fat 1/8



SC5333 Lipstick  
Fat 1/8



CX7476 Berry  
Fat 1/8



CX6699 Papaya  
Fat 1/8



SC5333 Berry  
Fat 1/8

Kit Info	12 Kits	24 Kits
CX7644 Sorbet Little Aurora Borealis	8 1/2 yards (1 bolt)	17 yards or (2) bolts
CX6574 Lipstick Little Stripe	8 1/2 yards (1 bolt)	17 yards or (2) bolts
CX6574 Fuchsia Little Stripe	6 yards (1 bolt)	12 yards or (1) bolt
SC5333 Charcoal Cotton Couture	6 yards (1 bolt)	12 yards or (1) bolt
CX6699 Aqua Hash Dot	1 1/2 yards (1 bolt)	3 yards or (1) bolt
SC5333 Fern Cotton Couture	1 1/2 yards (1 bolt)	3 yards or (1) bolt
SC5333 Luna Cotton Couture	1 1/2 yards (1 bolt)	3 yards or (1) bolt
CX7476 Stream Garden Walk Mosaic	1 1/2 yards (1 bolt)	3 yards or (1) bolt
CX6574 Limeade Little Stripe	1 1/2 yards (1 bolt)	3 yards or (1) bolt
CM0376 Mermaid Fairy Frost	1 1/2 yards (1 bolt)	3 yards or (1) bolt
CX6574 Grape Little Stripe	1 1/2 yards (1 bolt)	3 yards or (1) bolt

Kit Info	12 Kits	24 Kits
SC5333 Rose Cotton Couture	1 1/2 yards (1 bolt)	3 yards or (1) bolt
SC5333 Princess Cotton Couture	1 1/2 yards (1 bolt)	3 yards or (1) bolt
CM0376 Pink Fairy Frost	1 1/2 yards (1 bolt)	3 yards or (1) bolt
CX6699 Pink Hash Dot	1 1/2 yards (1 bolt)	3 yards or (1) bolt
SC5333 Peach Cotton Couture	1 1/2 yards (1 bolt)	3 yards or (1) bolt
CX6699 Papaya Hash Dot	1 1/2 yards (1 bolt)	3 yards or (1) bolt
SC5333 Berry Cotton Couture	1 1/2 yards (1 bolt)	3 yards or (1) bolt
SC5333 Lipstick Cotton Couture	1 1/2 yards (1 bolt)	3 yards or (1) bolt
CX7476 Berry Garden Walk Mosaic	1 1/2 yards (1 bolt)	3 yards or (1) bolt
CX7476 Berry Garden Walk Mosaic for backing	21 yards (2 bolts)	42 yards or (3) bolts

Little Aurora Borealis Quilt

Designed by Marinda Stewart

Skill Level: Confident Beginner

Size: 40" x 56"

**This quilt is made of 8" finished blocks**

<b>Fabrics</b>	<b>Yardage</b>	<b>Cutting</b>
CX7644 Sorbet Little Aurora Borealis	7/8 yard	(11) 8 ½" squares (6) 4 ½" squares (6) 4 ½" x 8 ½" (2) Fussy cut circles *
CX6574 Lipstick Little Stripe	7/8 yard	(6) Bias cut 4 ½" squares (4) Bias cut 8 ½" background * (5) 2 ½" x W.O.F. - binding
CX6574 Fuchsia Little Stripe	½ yard	(6) Bias cut 4 ½" squares (4) Bias cut 8 ½" background *
SC5333 Charcoal Cotton Couture	½ yard	(34) drunkard's path background * (7) 2 ½" circles
CX6699 Aqua Hash Dot <Combo 1>	Fat 1/8	(3) 5" squares (2) blades *
SC5333 Fern Cotton Couture <Combo 1>	Fat 1/8	(3) 5" squares (2) blades *
SC5333 Luna Cotton Couture <Combo 2>	Fat 1/8	(2) 5" squares (2) blades *
CX7476 Stream Garden Walk Mosaic <Combo 2>	Fat 1/8	(2) 5" squares (2) blades *
CX7644 Limeade Little Stripe <Combo 3>	Fat 1/8	(2) 5" squares (2) blades *
CM0376 Mermaid Fairy Frost <Combo 3>	Fat 1/8	(2) 5" squares (2) blades *
CX7644 Grape Little Stripe <Combo 4>	Fat 1/8	(2) 5" squares (2) blades *
SC5333 Rose Cotton Couture	Fat 1/8	(2) 5" squares (2) blades *

<Combo 4>		
SC5333 Princess Cotton Couture <Combo 5>	Fat 1/8	(2) 5" squares (2) blades *
CM0376 Pink Fairy Frost <Combo 5>	Fat 1/8	(2) 5" squares (2) blades *
CX6699 Pink Hash Dot <Combo 6>	Fat 1/8	(2) 5" squares (2) blades *
SC5333 Peach Cotton Couture <Combo 6>	Fat 1/8	(2) 5" squares (2) blades *
CX6699 Papaya Hash Dot <Combo 7>	Fat 1/8	(2) 5" squares (2) blades *
SC5333 Berry Cotton Couture <Combo 7>	Fat 1/8	(2) 5" squares (2) blades *
SC5333 Lipstick Cotton Couture	Fat 1/8	(2) 5" squares (2) blades *
CX7476 Berry Garden Walk Mosaic	Fat 1/8	(2) 5" squares (2) blades *
OPTIONAL: CX7476 Berry Garden Walk Mosaic	2 ¾ yards	Backing
<b>Also Needed:</b> 48" x 64" batting, threads to match (including a decorative variegated rayon thread for topstitching), scissors, straight pins, rotary cutter, acrylic ruler, mat, and fusible web.		

### Directions:

1. To make 8 ½" circle blocks: using the designated combinations, place (1) 5" square right sides together with its partner (i.e. – CX6699 Aqua and SC5333 Fern – Combo 1). Draw a diagonal line from corner to corner. Stitch ¼" on each side of the drawn line. Cut apart & press open. Yield (2) right square triangles (RST). Make (6) RST from combo #1. Make (4) RST from each remaining combination for a total of (34) RST. Using the drunkard's path center pattern cut (1) center from each RST. Save the leftovers!

Sew one drunkard's path background SC5333 Charcoal 4 ½" piece to each center. Clip curves on background piece to ease in fullness. Make (34) total. Combine (4) different 4 ½" units into (1) 8 ½" circle blocks as shown. Make (7) total. Set aside. (6) 4 ½" units remain. Sew one CX7644 4 ½" square to the left side of (3) 4 ½" units and sew CX7644 4 ½" square to the right side of the other 4 ½" units. Sew (1) CX7644 4 ½" x 8 ½" to the bottom of each pieced unit to make (6) 8 ½" blocks as shown. Set aside.

2. Trace (7) 2 ½" squares onto the paper side of the fusible web. Rough cut out. Iron onto the wrong side of SC5333 Charcoal. Cut out on pattern line. Remove paper backing. Randomly iron one

circle on (6) CX7644 8 ½" squares. Finish the raw edges using the decorative variegated rayon thread and a programmed decorative stitch on the sewing machine (a staggered satin stitch was used for this quilt). Set aside.

3. For the Dresden plate ¼ block – for one blade, fold in half lengthwise, right sides together. Stitch across the end. Trim folded corner. Turn to the right – (1) finished pointed blade. Repeat for all the blade pieces – (32) total. Divide blades into (2) groups of (16) – one of each color in each group. Sew together four random blades. Press seams open. Place pointed edges of blades right sides up on top of one bias cut Dresden plate 8 ½" background piece. Use (2) CX6574 Lipstick and (2) CX6574 Fuchsia backgrounds for each large plate. Align to make (1) 3 ½" block leaving ¼" seam allowance between the tip of the blades and the edge of the background. Topstitch the pointed blades of the background. Make (4) CX6574 Lipstick and (4) CX6574 Fuchsia, as shown. Set aside.

4. Sew together (2) CX6574 bias cut 4 ½" Lipstick and 4 ½" Fuchsia squares in a checkerboard pattern as shown. From the scraps of the drunkard's path centers in Step #1 randomly sew together four corners. Make (3) pieces. Iron fusible web on the back of each. Cut out (1) 2 ½" circles from each piece. Remove paper backing. Iron onto the center of each bias checkerboard block. Finish the raw edges in the same way as the Gray circles. Set aside.

5. To assemble the quilt – each row has (5) 8 ½" blocks, sew together in order. Refer to photograph for placement.

Row #1 – circle block, CX7644 8 ½" square with Gray circle, CX7644 8 ½" block, (1) ¼ circle 8 ½" block (from Step #1), (1) ¼ circle 8 ½" block sewn to make ½ circle as shown.

Row #2 – (1) CX7644 8 ½" square with Gray circle, (2) ¼ Dresden plate blocks to make ½ circle, (1) 8 ½" circle block, (1) checkerboard

Row #3 – (1) ¼ circle 8 ½" block, (2) ¼ Dresden plate blocks to complete the circle, (1) CX7644 8 ½" square with Gray circle, (1) Circle block.

Row #4 – (1) ¼ circle 8 ½" block (to match block in Row #3) to make ½ circle, (1) CX7644 8 ½" square, (1) CX7644 8 ½" square with Gray circle, (1) circle block, (1) CX7644 8 ½" square.

Row #5 – (1) checkerboard, (1) 8 ½" circle, (1) CX7644 8 ½" square, (2) ¼ Dresden plate blocks to make ½ circle.

Row #6 – (1) CX7644 8 ½" square with Gray circle, (1) CX7644 8 ½" square, (1) 8 ½" circle, (2) ¼ Dresden plate blocks to complete the circle as shown.

Row #7 – (1) circle block, (1) CX7644 8 ½" square with Gray circle, (1) checkerboard, (2) ¼ circle 8 ½" blocks sewn into ½ circle as shown. Sew remaining SC5333 Charcoal 2 ½" circle to the upper right corner of the last block as shown. Join the rows together as each is sewn to create the finished pattern.

6. For remaining CX7644 fussy cut (2) large circles. Back with fusible web, remove paper and iron in the center of each 16" Dresden plate as shown. Finish in the same way as the other stitched circles.
7. Backing - fold fabric in half horizontally. Cut along the fold. Remove selvage edges. Sew right sides together along one selvage edge. Trim to 48" x 64" for backing.
8. Layer backing, batting, and quilt top. Baste.
9. Quilt as desired.
10. Bind quilt using CX6574 Lipstick 2 ½" strips pieced as needed for length.

#### Kit Info

	12 Kits	24 Kits
CX7644 Sorbet	8 ½ yards or (1) bolt	17 yards or (2) bolt
CX6574 Lipstick	8 ½ yards or (1) bolt	17 yards or (2) bolt
CX6574 Fuchsia	6 yards or (1) bolt	12 yards or (1) bolt
SC5333 Charcoal	6 yards or (1) bolt	12 yards or (1) bolt
CX6699 Aqua	1 ½ yards of each color or (1) bolt of each color	3 yards of each color or (1) bolt of each color
SC5333 Fern		
SC5333 Luna		
CX7476 Stream		
CX7644 Limeade		
CM0376 Mermaid		
CX7644 Grape		
SC5333 Rose		
SC5333 Princess		
CM0376 Pink		
CX6699 Pink		
SC5333 Peach		
CX6699 Papaya		
SC5333 Berry		
SC5333 Lipstick		
CX7476 Berry		
CX7476 Berry for BACKING	21 yards or (2) bolts *	42 yards or (3) bolts *
* includes amount needed for quilt top		

↑  
← Paper edge is  
the outside edge  
of the pattern piece  
It should be  $8\frac{1}{2}"$  on  
each side.

←  $8\frac{1}{2}"$  →

←  $4\frac{1}{2}"$  →

Drunkard's Path  
background

↑  
 $4\frac{1}{2}"$   
↓

↖ grain line ↗

cut on the  
bias

Drunkard's Path  
Center

$2\frac{1}{2}"$   
circle

↑  
 $8\frac{1}{2}"$   
↓

Dresden Plate  
background

"Little Aurora Borealis" Quilt  
PATTERNS

$\frac{1}{4}"$  seam allowance included  
on all pattern pieces.

Dresden Plate Wedge.

\* Mariela © 2017