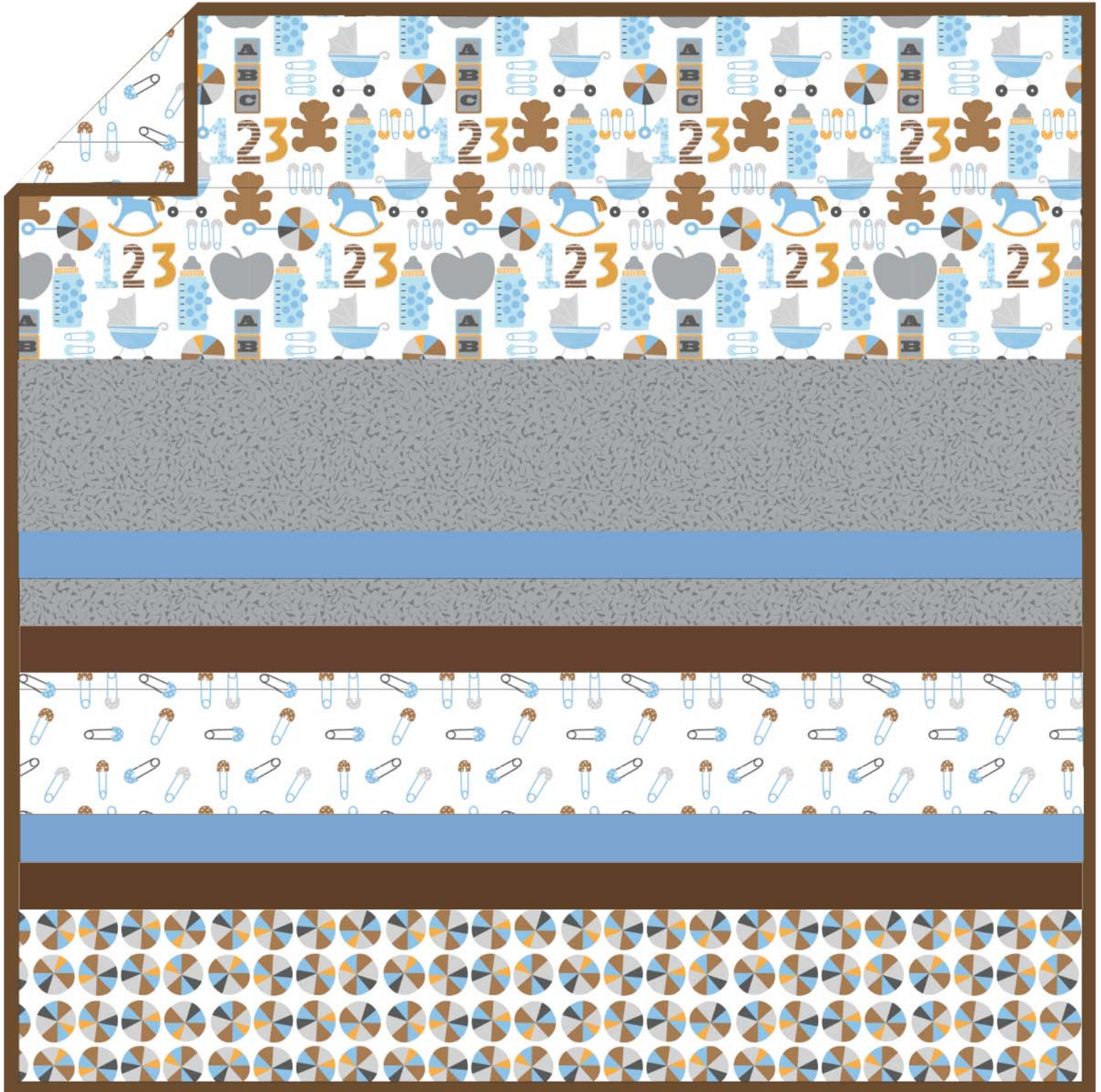


MINKY

# Rocking Horse Blue Strip Quilt

SIZE : 58" x 58"



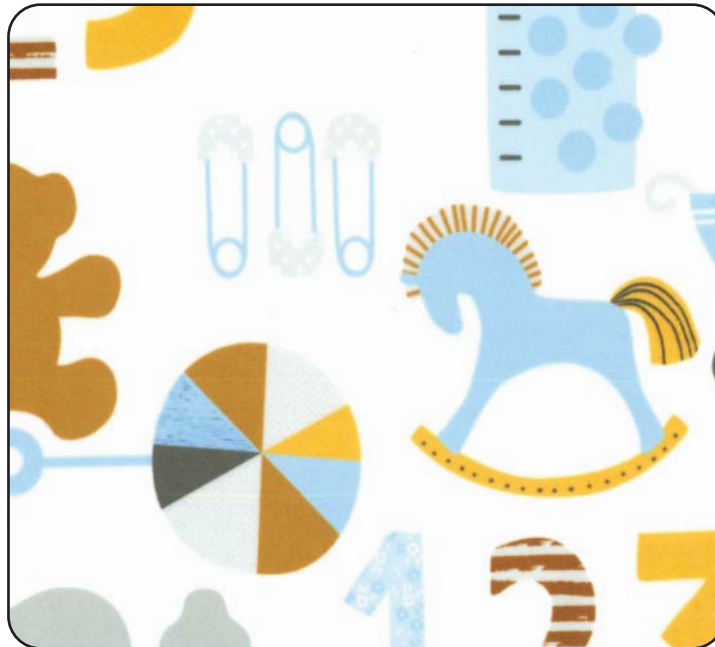
Free Pattern available at [michaelmillerfabrics.com](http://michaelmillerfabrics.com)

michael miller FABRICS

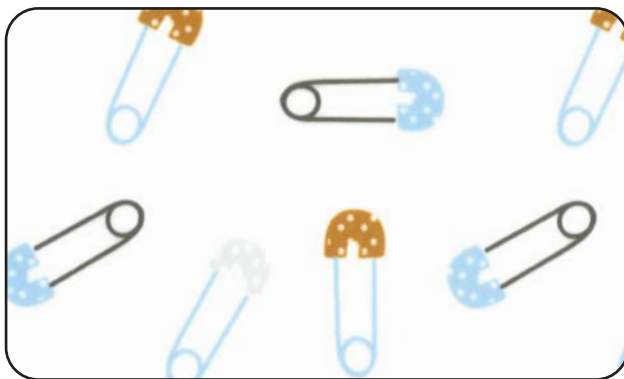
- Free Store Model with Purchase as Shown on Cover -

Get a Free Store Model 58" x 58" strip quilt featuring Rocking Horse Blue with an order of a casepack (the entire collection is 6 skus). All bolt sizes are 12 yards.

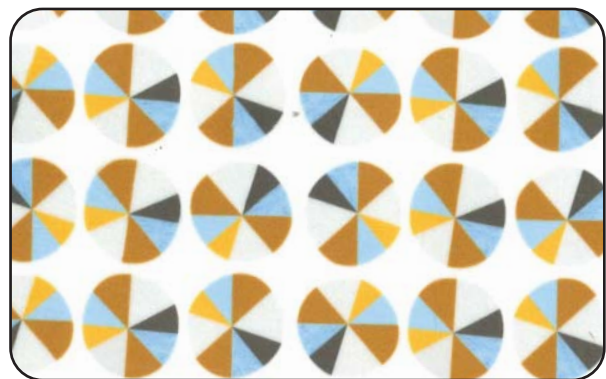
Free Store Display - use style #GWP0079



SMZ8148 BLUE  
ROCKING HORSE



SMZ8010 BLUE  
PINS



SMZ8149 BLUE  
PINWHEELS



SMS7580 BLUE BELL  
SILKY MINKY SOLID



SMS7580 CARAMEL  
SILKY MINKY SOLID



BS7582 SILVER  
BELLA SNUGGLE

## Rocking Horse Blue Strip Quilt 58" x 58"

*Yardages based on fabric 58"-60" wide.*

Fabric A	SMZ8148-Blue	Rocking Horse	2/3 yard
Fabric B	BS7582-Silver	Bella Snuggle	1/2 yard
Fabric C	SMS7580 Blue Bell	Silky Minky Solid	1/4 yard
Fabric D	*SMS7580-Caramel	Silky Minky Solid	1/2 yard
Fabric E	**SMZ8010-Blue	Pins	2 yards
Fabric F	SMZ8149-Blue	Pinwheels	1/3 yard

\*also, binding

\*\*also, backing

### Cutting:

Fabric A, cut:

- (1) 20" x width of fabric (WOF) strip

Fabric B, cut:

- (1) 10 ½" x WOF strips
- (1) 3 ½" x WOF strips

Fabric C, cut:

- (2) 3 ½" x WOF strips

Fabric D, cut:

- (2) 3 ½" x WOF strips
- (5) 2" x WOF strips for binding

Fabric E, cut:

- (1) 7" x WOF strips
- (1) 60" x 60" for backing

Fabric F, cut:

- (1) 10 ½" x WOF strips

**You will also need:**

- 60x60 backing
- 58x58 batting (if desired)
- Spray adhesive (505)
- Flower head pins
- Walking Foot (recommended)

**Sewing and Basic Technique for Sewing Strip Quilts:**

This quilt is sewn using the flip and sew method. Each strip is sewn on the foundation of the quilt, sewing through all layers, backing and batting. This means the quilt is quilted when you are done!

1. Lay the backing fabric on a flat surface. Place the batting centered exactly on top of the backing. Spray fusible adhesive to hold batting to backing fabric.
2. Smooth out all wrinkles. Fold in half keeping the 60" wide horizontal. Mark the center of the backing and batting piece.
3. You will start with the third strip for this version. Lay the third strip on the batting, aligning the top edge with the marked line on the batting. Use spray adhesive to secure in place.
4. Choose your next strip and pin in place with right sides together, lining up the raw edges along one horizontal side. Use a 1/2" seam allowance to attach the strips to the batting and backing. You will be sewing through the strip you pinned, the center strip, the batting and the backing.
5. Smooth the strip right side up and spray to secure in place. Repeat step 4 on the other side of the middle strip.
6. Continue to sew strips alternating sides working from the middle. Repeat pinning and sewing until all strips are sewn. Baste the outer edge down before you attach binding. Trim all edges to even up.
7. Bind with 2" strips sewn together.

