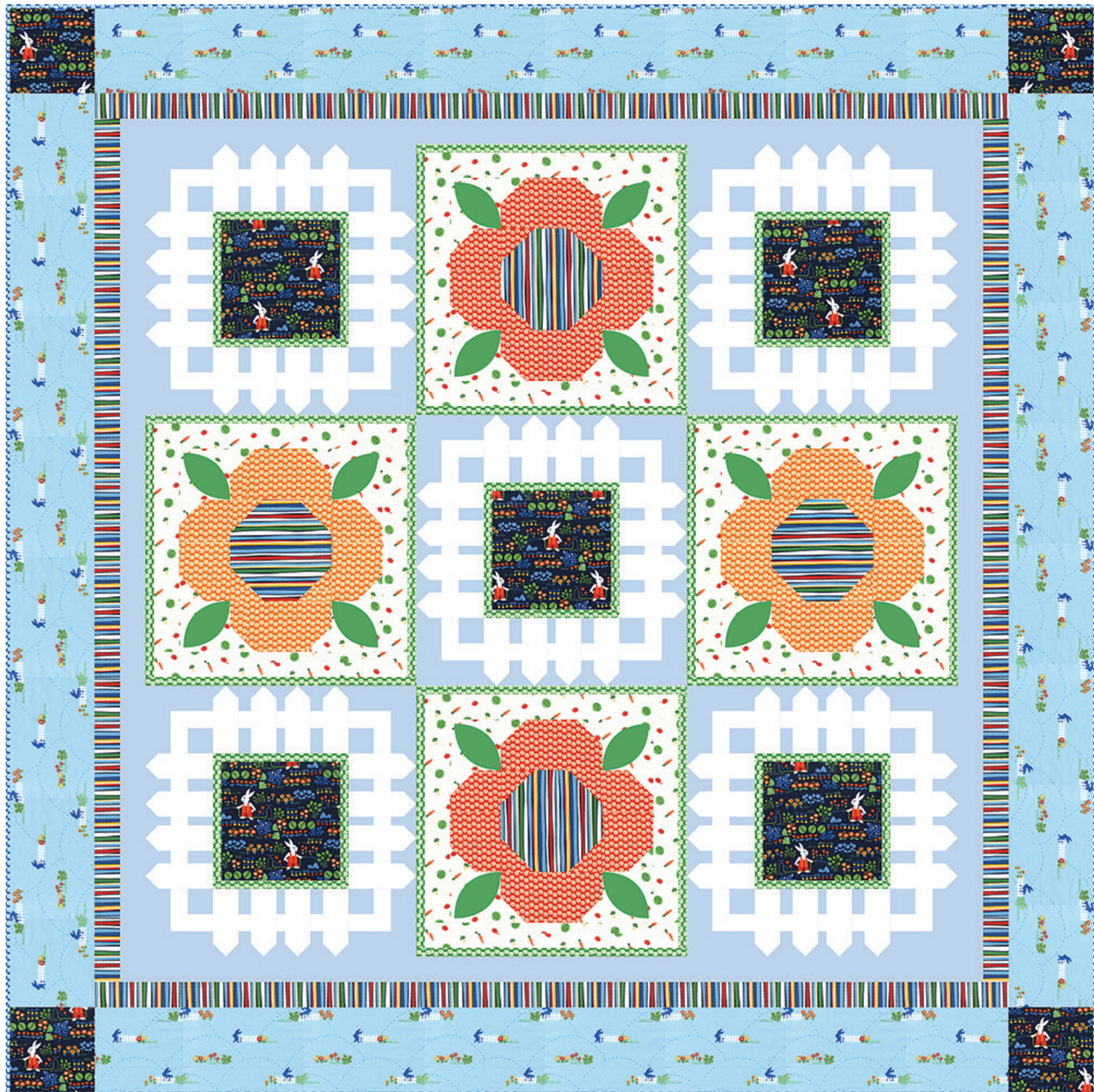


michael miller FABRICS

BUNNY'S GARDEN Quilt

SIZE 64" X 64" | LEVEL INTERMEDIATE | DESIGNED BY HEIDI PRIDEMORE

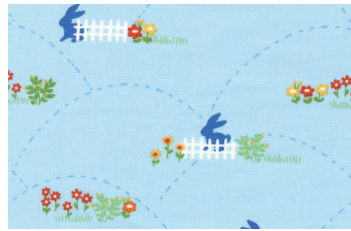


FREE PATTERN AVAILABLE ON MICHAELMILLERFABRICS.COM

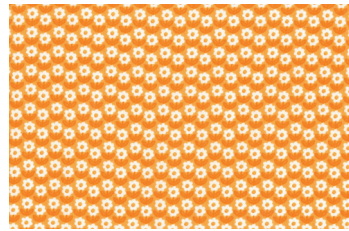
FABRIC REQUIREMENTS



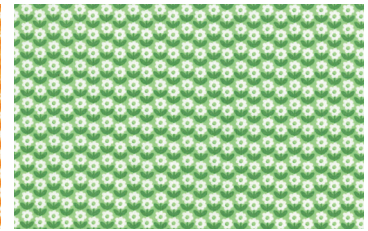
**CX7761 TOMATO
BUNNY'S GARDEN**
1/2 YARD



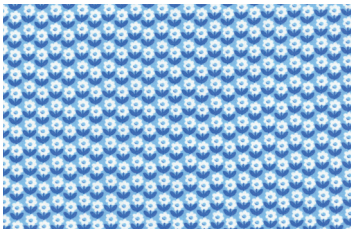
**CX7762 SKY
HOPPING FENCES**
1-2/3 YARDS



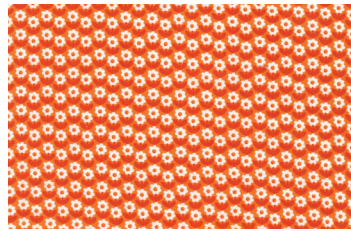
**CX7763 CARROT
FLOWER PATCH**
3/8 YARD



**CX7763 GRASS
FLOWER PATCH**
1/2 YARD



**CX7763 SKY*
FLOWER PATCH**
5/8 YARD (INCLUDES BINDING)



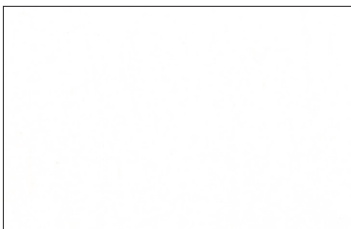
**CX7763 TOMATO
FLOWER PATCH**
3/8 YARD



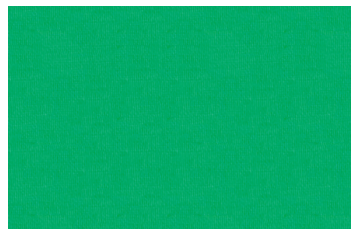
**CX7764 TOMATO
LITTLE NIBBLES**
7/8 YARD



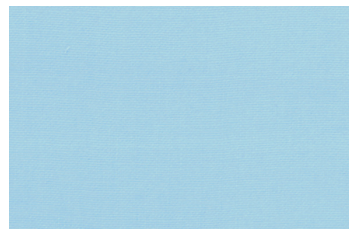
**CX7765 PRIMARY
HAPPY TRAILS**
3/4 YARD



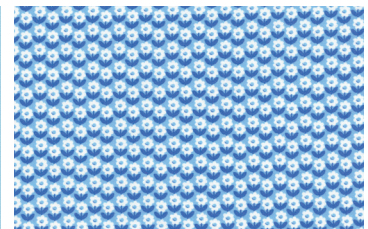
**SC5333 BRIGHT WHITE
COTTON COUTURE**
7/8 YARD



**SC5333 GREEN
COTTON COUTURE**
1/4 YARD



**SC5333 BREEZE
COTTON COUTURE**
1-1/8 YARDS



**CX7763 SKY
FLOWER PATCH**
4 YARDS

FABRIC REQUIREMENTS

SKU	YARDAGE PER ONE QUILT	# OF BOLTS FOR 12 KITS	# OF BOLTS FOR 24 KITS
(A) CX7761-TOMATO	1/2 YARD	1 BOLT (6 YARDS)	1 BOLT (12 YARDS)
(B) CX7762-SKY	1-2/3 YARDS	2 BOLTS (20 YARDS)	3 BOLTS (40 YARDS)
(C) CX7763-CARROT	3/8 YARD	1 BOLT (2-1/4 YARDS)	1 BOLT (4-1/2 YARDS)
(D) CX7763-GRASS	1/2 YARD	1 BOLT (6 YARDS)	1 BOLT (12 YARDS)
(E) CX7763-SKY*	5/8 YARD	1 BOLT (7-1/2 YARDS)	1 BOLT (15 YARDS)
(F) CX7763-TOMATO	3/8 YARD	1 BOLT (2-1/4 YARDS)	1 BOLT (4-1/2 YARDS)
(G) CX7764-TOMATO	7/8 YARD	1 BOLT (10-1/2 YARDS)	2 BOLTS (21 YARDS)
(H) CX7765-PRIMARY	3/4 YARD	1 BOLT (9 YARDS)	2 BOLTS (18 YARDS)
(I) SC5333-BRIGHT WHITE	7/8 YARD	1 BOLT (10-1/2 YARDS)	2 BOLTS (21 YARDS)
(J) SC5333-GREEN	1/4 YARD	1 BOLT (3 YARDS)	1 BOLT (6 YARDS)
(K) SC5333-BREEZE	1-1/8 YARDS	1 BOLT (13-1/2 YARDS)	2 BOLTS (27 YARDS)
(BACKING) CX7763-SKY	4 YARDS	4 BOLTS (48 YARDS)	7 BOLTS (96 YARDS)
TOTAL BOLTS NEEDED		16 BOLTS (12W/O BACK)	24 BOLTS (17W/O BACK)

*INCLUDES BINDING

WE DO OUR BEST TO MAKE SURE THESE ARE ACCURATE YARDAGES
BUT THESE ARE ESTIMATES UNTIL THE FINAL PATTERN IS COMPLETED AND EDITED. THANK YOU.

"Bunny's Garden"

Quilt by Heidi Pridemore

Size: Approximately 64" x 64" Skill Level: Intermediate

Materials

Cutting instructions

Please Note: All strips are cut across the width of fabric (WOF) from selvage to selvage edge unless otherwise noted.

	Fabric	Yardage	Cutting
(A)	CX7761-Tomato Bunny's Garden - Tomato	½ yard	<ul style="list-style-type: none"> • Cut one 7 ½" x WOF strip. Sub-cut the strip into five 7 ½" squares. • Cut one 5 ½" x WOF strip. Sub-cut the strip into four 5 ½" squares.
(B)	CX7762-Sky Hopping Fences – Sky	1 ⅔ yards	<ul style="list-style-type: none"> • Cut two 5 ½" x 54 ½" Length of Fabric (LOF) strips. • Cut two 5 ½" x 54 ½" WOF strips from the remaining fabric, piece as needed.
(C)	CX7763-Carrot Flower Patch – Carrot	⅜ yard	<ul style="list-style-type: none"> • Cut one 6 ½" x WOF strip. Sub-cut eight 3 ½" x 6 ½" strips. • Cut one 2 ½" x WOF strip. Sub-cut eight 2 ½" squares.
(D)	CX7763-Grass Flower Patch – Grass	½ yard	<ul style="list-style-type: none"> • Cut three 1" x WOF strips. Sub-cut ten 1" x 8 ½" strips. • Cut two 1" x WOF strips. Sub-cut ten 1" x 7 ½" strips. • Cut four 1" x WOF strips. Sub-cut eight 1" x 16 ½" strips. • Cut four 1" x WOF strips. Sub-cut eight 1" x 15 ½" strips.
(E)	CX7763-Sky Flower Patch – Sky	⅝ yard	<ul style="list-style-type: none"> • Cut seven 2 ½" x WOF strips for the binding.
(F)	CX7763-Tomato Flower Patch – Tomato	⅜ yard	<ul style="list-style-type: none"> • Cut one 6 ½" x WOF strip. Sub-cut eight 3 ½" x 6 ½" strips. • Cut one 2 ½" x WOF strip. Sub-cut eight 2 ½" squares.
(G)	CX7764-Tomato Little Nibbles – Tomato	⅞ yard	<ul style="list-style-type: none"> • Cut two 3 ½" x WOF strips. Sub-cut the strips into sixteen 3 ½" squares. • Cut two 2" x WOF strips. Sub-cut thirty-two 2" squares. • Cut four 2" x WOF strips. Sub-cut eight 2" x 15 ½" strips. • Cut three 2" x WOF strips. Sub-cut eight 2" x 12 ½" strips.
(H)	CX7765-Primary Happy Trails – Primary	¾ yard	<ul style="list-style-type: none"> • Cut three 2" x WOF strips. Sew the strips together end to end with diagonal seams and cut two 2" x 54 ½" strips. • Cut three 2" x WOF strips. Sew the strips together end to end with diagonal seams and cut two 2" x 51 ½" strips. • Cut one 6 ½" x WOF strip. Sub-cut the strip into four 6 ½" squares.
(I)	SC5333-Bright White Cotton Couture – Bright White	⅞ yard	<ul style="list-style-type: none"> • Cut two 1 ½" x WOF strips. Sub-cut the strips into forty 1 ¼" x 1 ½" strips. • Cut one 1" x WOF strip. Sub-cut the strip into twenty 1" x 1 ½" strips. • Cut nine 2" x WOF strips. Sub-cut the strips into eighty 2" x 4 ½" strips. • Cut two 1 ½" x WOF strips. Sub-cut the strip into twenty 1 ½" x 3" strips. • Cut one 1 ½" x WOF strip. Sub-cut the strip into twenty 1 ½" x 2" strips.
(J)	SC5333-Green Cotton Couture – Grass	¼ yard	<ul style="list-style-type: none"> • See instructions to cut sixteen leaves.
(K)	SC5333-Breeze Cotton Couture – Breeze	1 ⅞ yards	<ul style="list-style-type: none"> • Cut one 2" x WOF strip. Sub-cut the strip into twenty 2" squares. • Cut one 3" x WOF strip. Sub-cut the strip into twenty 2" x 3" strips. • Cut one 4 ½" x WOF strip. Sub-cut the strip into twenty 2" x 4 ½" strips. • Cut three 2" x WOF strips. Sub-cut the strips into eighty 1 ¼" x 2" strips. • Cut two 1" x WOF strips. Sub-cut the strips into forty 1" x 2" strips. • Cut five 1 ¼" x WOF strips. Sub-cut the strips into (160) 1 ¼" squares. • Cut three 2" x WOF strips. Sew the strips together end to end with diagonal seams and cut two 2" x 51 ½" strips. • Cut three 2" x WOF strips. Sew the strips together end to end with diagonal seams and cut two 2" x 48 ½" strips.
Backing	CX7763-Sky Flower Patch – Sky	4 yards	<ul style="list-style-type: none"> • Cut two 72" x WOF strips. Piece the strips together and trim to make the 72" x 72" pieced backing.

You will also need:

• 72" x 72" batting, fusible web, threads to match, scissors, straight pins, acrylic ruler, rotary cutter and mat.

Disclaimers

This pattern is provided as a courtesy to quilt stores, catalogs and quilters. Michael Miller Fabrics, LLC is not responsible for the accuracy of any kits packaged to accompany this pattern. Please direct any inquiries to the kit maker.

Yardage requirements for this pattern may allow for excess yardage to accommodate specific placement of motifs or to allow for any fussy-cutting to achieve the finished quilt design.

While every attempt has been made to give accurate measurements, yardage requirements and construction directions; this does not allow personal variations in measuring, cutting or sewing. The enclosed directions were used in the construction of the original quilt.

Block Assembly

1. Sew one 1" x 7 1/2" Fabric D strip to each side of one 7 1/2" Fabric A square. Sew one 1" x 8 1/2" Fabric D strip to the top and to the bottom of the Fabric A square to make one Unit 1 block (Fig. 1). Repeat to make five Unit 1 blocks total.

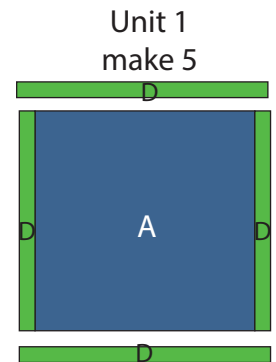
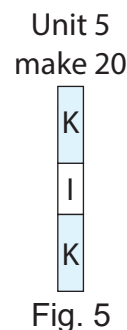
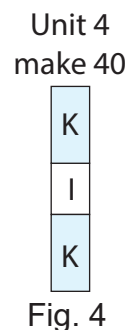
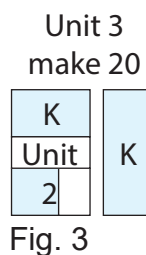
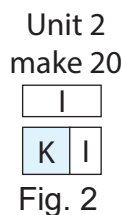
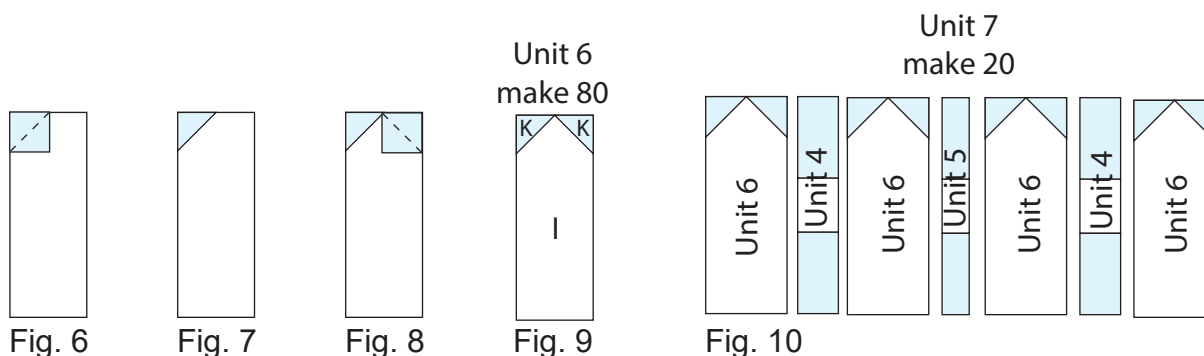


Fig. 1

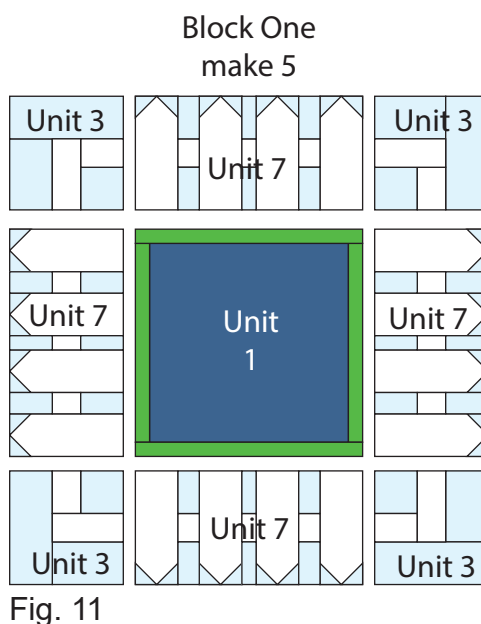
2. Sew one 1 1/2" x 2" Fabric I strip to the right side of (1) 2" Fabric K square. Sew one 1 1/2" x 3" Fabric I strip to the top of the Fabric K strip to make one Unit 2 block (Fig. 2). Repeat to make twenty Unit 2 blocks total.
3. Sew one 2" x 3" Fabric K strip to the top of one Unit 2 block. Sew one 2" x 4 1/2" Fabric K strip to the right side of the Unit 2 block to make one Unit 3 block (Fig. 3). Repeat to make twenty Unit 3 blocks total.
4. Sew one 1 1/4" x 2" Fabric K strip to the top and to the bottom of one 1 1/4" x 1 1/2" Fabric I strip to make one Unit 4 strip (Fig. 4). Repeat to make forty Unit 4 strips total.
5. Sew one 1" x 2" Fabric K strip to the top and to the bottom of one 1" x 1 1/2" Fabric I strip to make one Unit 5 strip (Fig. 5). Repeat to make twenty Unit 5 strips total.



6. Place one 1 ¼" Fabric K square on the top left corner of one 2" x 4 ½" Fabric I strip, right sides together (Fig. 6). Sew across the diagonal of the small square from the upper right corner to the lower left corner (Fig. 6). Flip open the triangle formed and press (Fig. 7). Trim away the excess fabric from behind the triangle 1/4" away from the sewn seam.
7. Follow Figure 8 for the seam direction to add a 1 ¼" Fabric K square to the upper right corner of the 2" x 4 ½" Fabric I strip to make one Unit 6 strip (Fig. 9).
8. Repeat Steps 6-7 to make eighty Unit 6 strips total.
9. Sew one Unit 6 strip, one Unit 4 strip, one Unit 6 strip, one Unit 5 strip, one Unit 6 strip, one Unit 4 strip and one Unit 6 strip together lengthwise and in that order to make one Unit 7 strip (Fig. 10). Repeat to make twenty Unit 7 strips total.



10. Sew one Unit 7 strip to each side of one Unit 1 block. Sew one Unit 3 block to each end of one Unit 7 strip. Pay attention to the orientation of the blocks. Repeat to make a second strip. Sew the strips to the top and to the bottom of the Unit 1 block to make one Block One square (Fig. 11). Repeat to make five Block One squares total.



11. Place one 2 ½" Fabric F square on the top left corner of one 6 ½" Fabric H square, right sides together (Fig. 12). Sew across the diagonal of the square from the upper right corner to the lower left corner (Fig. 12). Flip open the triangle formed and press (Fig. 13). Trim away the excess fabric from behind the triangle ¼" away from the sewn seam.
12. Follow Figure 14 for the seam direction to add a 2 ½" Fabric F square to each of the remaining corners of the 6 ½" Fabric H square to make one Unit 8 block (Fig. 15).
13. Repeat Steps 11-12 to make a second Unit 8 block.
14. Repeat Steps 11-12 using two 6 ½" Fabric H squares and eight 2 ½" Fabric C squares to make two Unit 9 blocks (Fig. 16).

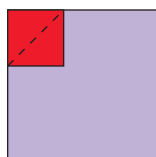


Fig. 12

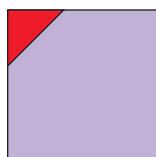


Fig. 13

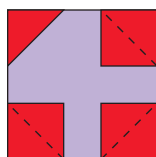


Fig. 14

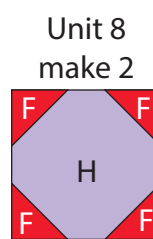


Fig. 15

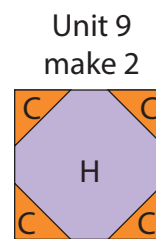


Fig. 16

15. Place one 2" Fabric G square on the upper left corner of one 3 ½" x 6 ½" Fabric F strip, right sides together. Sew across the diagonal of the square from the upper right corner to the lower left corner. Flip open the triangle formed and press. Trim away the excess fabric from behind the triangle, leaving a ¼" seam allowance.
16. Place another 2" Fabric G square on the upper right corner of the 3 ½" x 6 ½" Fabric F strip, right sides together. Sew across the diagonal of the square from the upper left corner to the lower right corner. Flip open the triangle formed and press. Trim away the excess fabric from behind the triangle, leaving a ¼" seam allowance to make one Unit 10 strip (Fig. 17).
17. Repeat Steps 15-16 to make eight Unit 10 strips total.
18. Repeat Steps 15-16 using eight 3 ½" x 6 ½" Fabric C strips and sixteen 2" Fabric G squares to make eight Unit 11 strips (Fig. 18).

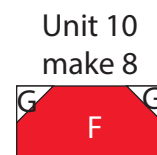


Fig. 17

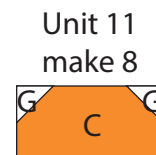


Fig. 18

19. Following the manufacturer's instructions, trace the listed number of each template onto the paper side of the fusible web. Roughly cut out each template about 1/8" outside the drawn lines.
20. Press each template onto the wrong side of the fabrics as listed on the templates. Cut out each template on the drawn lines.
21. Refer to Figure 19 to arrange and press one Fabric J leaf onto one 3 ½" Fabric G square.
22. Finish the raw edges of each shape with a decorative stitch such as a buttonhole or satin stitch to make one Unit 12 block.
23. Repeat Steps 21-22 and make sixteen Unit 12 blocks total.

Unit 12
make 16



Fig. 19

24. Sew one Unit 10 strip to each side of one Unit 8 block. Sew one Unit 12 block to each end of one Unit 10 strip. Repeat to make a second strip. Pay attention to the orientation of the blocks. Sew the strips to the top and to the bottom of the Unit 8 strip to make one Unit 13 block (Fig. 20). Repeat to make a second Unit 13 block.
25. Sew one 2" x 12 1/2" Fabric G strip to each side of one Unit 13 block. Sew one 2" x 15 1/2" Fabric G strip to the top and to the bottom of the Unit 13 block to make one Unit 14 block (Fig. 21). Repeat to make a second Unit 14 block.
26. Sew one 1" x 15 1/2" Fabric D strip to each side of one Unit 14 block. Sew one 1" x 16 1/2" Fabric D strip to the top and to the bottom of the Unit 14 block to make one Block Two square (Fig. 22). Repeat to make a second Block Two square.

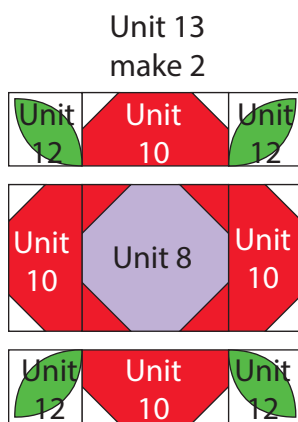


Fig. 20

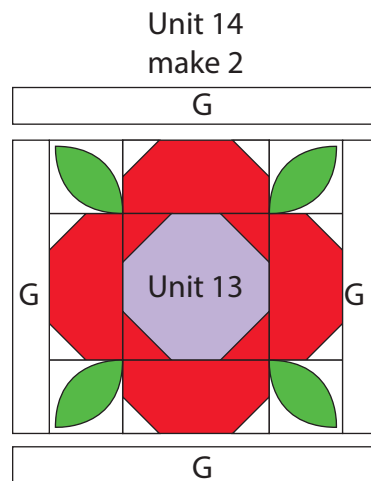


Fig. 21

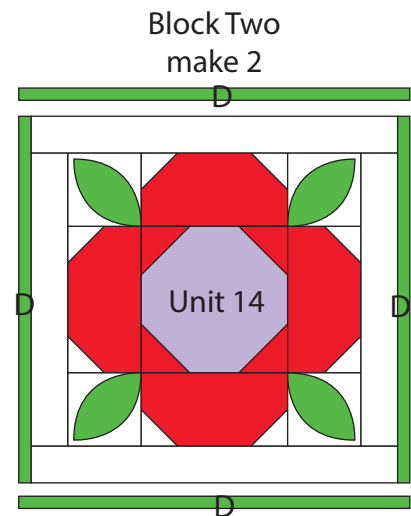


Fig. 22

27. Repeat Steps 24-26 and use Figures 23-25 for fabric identification, location and orientation to make two Block Three squares.

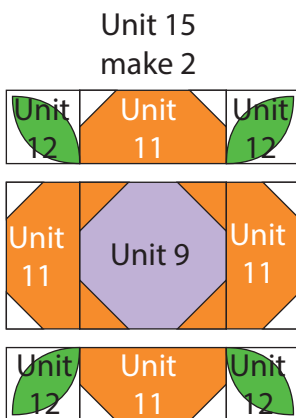


Fig. 23

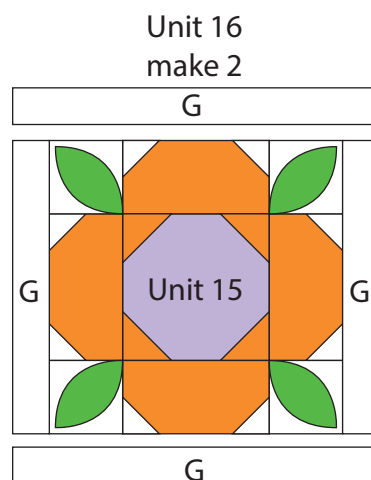


Fig. 24

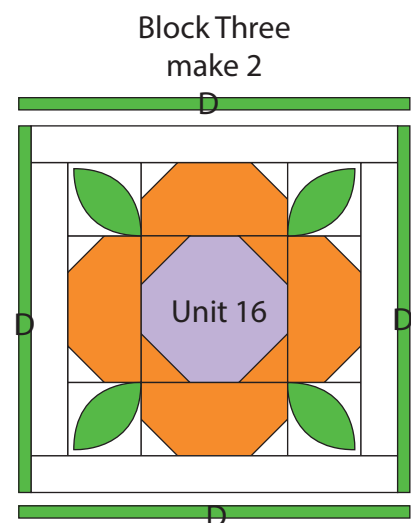
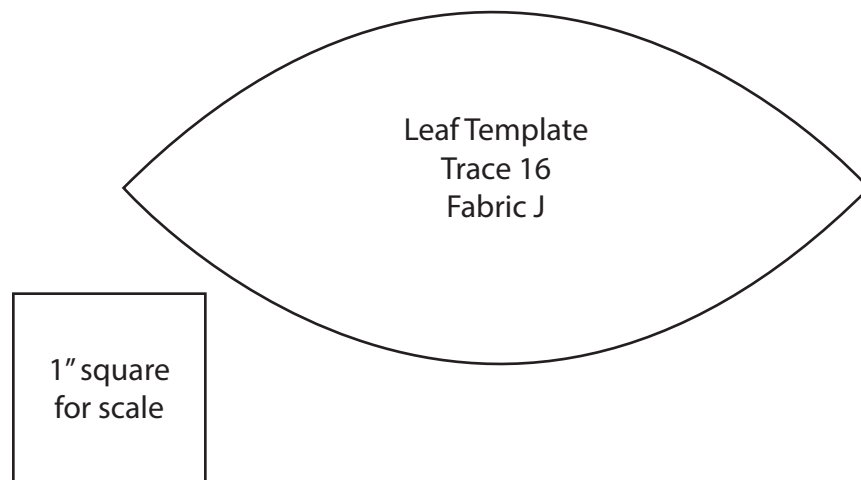


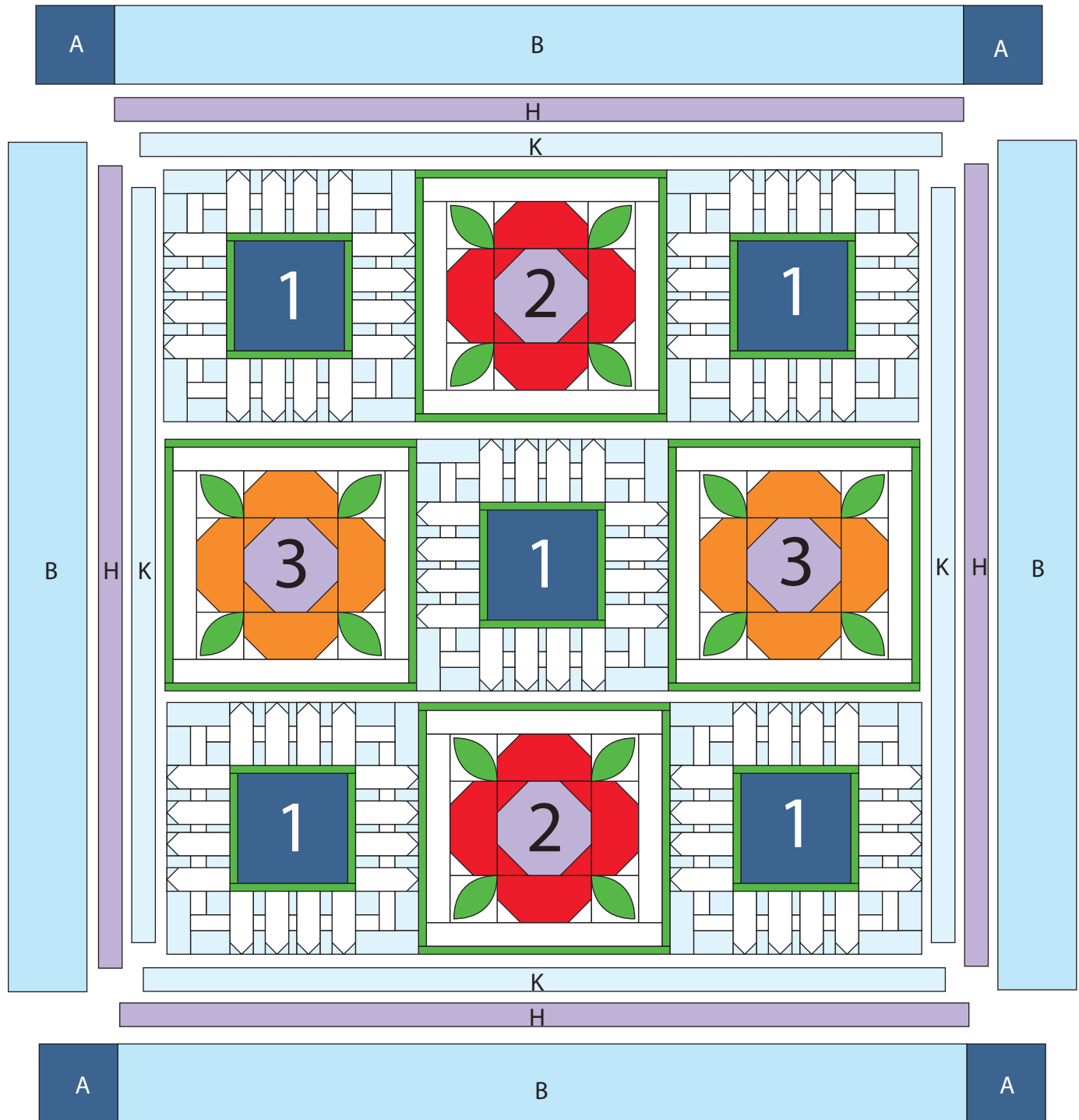
Fig. 25

Quilt Top Assembly

(Follow the Quilt layout while assembling the quilt top.)

28. Sew one Block One square to each side of one Block Two square to make Row One. Repeat to make Row Three.
29. Sew one Block Three square to each side of one Block One square to make Row Two.
30. Sew the three rows together in numerical order to make the Center Block.
31. Sew one 2" x 48 ½" Fabric K strip to each side of the Center Block. Sew one 2" x 51 ½" Fabric K strip to the top and to the bottom of the Center Block.
32. Sew one 2" x 51 ½" Fabric H strip to each side of the Center Block. Sew one 2" x 54 ½" Fabric H strip to the top and to the bottom of the Center Block.
33. Sew one 5 ½" x 54 ½" Fabric B strip to each side of the Center Block. Sew one 5 ½" Fabric A square to each end of one 5 ½" x 54 ½" Fabric B strip. Repeat to make a second strip. Sew the strips to the top and to the bottom of the Center Block to make the quilt top.
34. Layer and quilt as desired.
35. Sew the seven 2 ½" x WOF Fabric E strips together, end-to-end with 45-degree seams, to make the binding. Fold this long strip in half lengthwise with wrong sides together and press
36. Bind as desired.





Quilt Layout