

# MIDNIGHT AT THE OWL-ASIS

michael miller FABRICS



SIZE: 41" X 53" | CONFIDENT BEGINNER OR INTERMEDIATE LEVEL | DESIGNED BY MARINDA STEWART



# FABRIC REQUIREMENTS

Backing and Batting: 45" x 60"



CX7273 Ink  
Wise Owl Collage  
1 yard



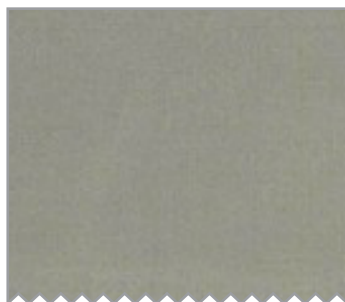
CX7016 Cream  
Whoo's There  
1/4 yard



DC7328 Stone  
Beach Comber  
1/8 yard



DC7328 Ebony  
Beach Comber  
1/2 yard



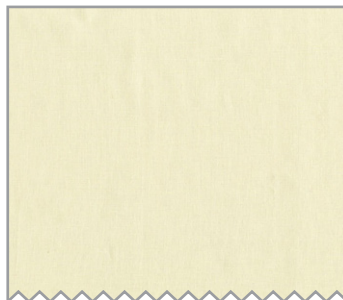
SC5333 Earth  
Cotton Couture  
1/8 yard



DC7328 Navy  
Beach Comber  
1/4 yard



K2264 (Navy)  
Krystal  
1/8 yard



SC5333 Cream  
Cotton Couture  
3/8 yard



K1063 (Blue)  
Krystal  
1/2 yard



DC7328 Sand  
Beach Comber  
Fat 1/4



DC7327 Denim  
Feather's Fly  
Fat 1/4



DC7330 Navy  
Pearls  
3/8 yard

# Midnight at the Owl-asis

Quilt designed by Marinda Stewart

Skill Level: Confident Beginner or Intermediate

Size: 41" x 53"

Fabrics	Yardage	Cutting
CX7273 Ink Wise Owl Collage	1 yard	(4) 6 ½" W x 8 ½" H * - fussy cut (2) 6 ½" x 35 ½"
CX7016 Cream Whoo's There	1/4 yard **	(4) 3 ¼" x 16 ½"
DC7328 Stone Beach Comber	1/8 yard	(4) 1 ½" x 6 ½" (4) 1 ½" x 9 ½" (12) ½ feathers *** left
DC7328 Ebony Beach Comber	1/2 yard	(5) 2 ½" x W.O.F. – binding (12) ½ feathers *** right
SC5333 Earth Cotton Couture	1/8 yard	(4) 1 ½" x 7 ½" (4) 1 ½" x 10 ½"
DC7328 Navy Beach Comber	1/4 yard	(4) 1 ½" x 8 ½" (4) 1 ½" x 11 ½" (8) 2" x 16 ½"
K2264 (Navy) Krystal	1/8 yard	(4) 1 ½" x 9 ½" (4) 1 ½" x 12 ½"
SC5333 Cream Cotton Couture	3/8 yard	(24) 2" squares (192) 1 ¼" squares
K1063 (Blue) Krystal	1/2 yard	(48) 1 ¼" squares (48) 1 ¼" x 2" (24) 2" x 6 ½" (8) 2" squares
DC7328 Sand Beach Comber	Fat ¼	(4) 3 ½" x 16 ½"
DC7327 Denim Feather's Fly	Fat ¼	(8) 2" x 16 ½" (1) 3 ½" square
DC7330 Navy Pearls	3/8 yard	(4) 1 ¾" x 16 ½" (48) 1 ¼" x 2" (48) 1 ¼" squares
<p>* Center on motif as shown</p> <p>** Or amount needed for (2) complete W.O.F. rows of Owls</p> <p>*** See pattern – cut on the bias – (12) Left Facing, (12) Right Facing</p>		
<p><b>Also Needed:</b> 45" x 60" backing, 45" x 60" batting, threads to match, including dark blue thread, scissors, straight pins, rotary cutter, acrylic ruler, and mat.</p>		
<p><b>This quilt consists of (4) 16" compound blocks with borders. Directions for one block will be given</b></p>		

## Directions:

1. To make one 3 ½" star block – place one SC5333 Cream 1 ¼" square, right sides together, on top of left side of K1063 1 ¼" x 2" piece. Sew diagonally from the lower outside corner to the upper inside corner of the cream squares. Press open. Trim excess fabric from the back. Repeat for the other side sewing from the lower right outside corner to the inside upper left corner. Press open. Trim excess fabric. Make (4) units. To assemble one star – Row #1 & #3 sew one K1063 1 ¼" square to each end of one 1 ¼" x 2" pieced unit. Make (2). Row #2. Sew one pieced 1 ¼" x 2" unit to each side of one SC5333 2" square as shown. Sew Row # 1 and #3 to the top and bottom of Row #2 as shown to make (1) 8-point star 3 ½" block. Make (12) star blocks with K1063 as the background and (12) with DC7330 as the background. Make (24) total. Set aside.
2. To make (1) 3" x 6" feather block – sew (1) ½ feather piece (DC7328 Ebony or Stone) into (1) K1063 2" x 6 ½" piece with the arc (see pattern). Clip curve to ease in fullness. Make (12) with DC7328 Stone and (12) with DC7328 Ebony. Sew one of each together to make (1) 3 ½" x 6 ½" feather block. Make (12) total. Set aside.
3. Sew one DC7328 Stone 1 ½" x 6 ½" piece to the top of one CX7273 6 ½" W x 8 ½" H piece. Sew one DC7328 Stone 1 ½" x 9 ½" piece to the right side. Sew one SC5333 Earth 1 ½" x 7 ½" piece to the bottom. Sew one SC5333 Earth 1 ½" x 10 ½" piece to the left side. Sew one DC7328 Navy 1 ½" x 8 ½" piece to the top. Sew one DC7328 Navy 1 ½" x 11 ½" piece to the right sides. Sew one K2264 1 ½" x 9 ½" piece to the bottom. Sew on K2264 1 ½" x 12 ½" piece to the left side. Make (4) blocks total. Set aside.
4. Sew together (1) DC7330 3 ½" star and (1) K1063 3 ½" star. Make (8) pairs. Sew one 3 ½" x 6 ½" feather block to one side of each of the pairs to make (8) 6 ½" squares. Sew together (2) 6 ½" blocks in alternating directions as shown. Make (4) units total each 6 ½" x 12 ½".
5. Sew one 6 ½" x 12 ½" unit to the right side of each owl block. Sew one CX7016 3 ¼" x 16 ½" piece to the bottom of the block. Sew one CX7016 3 ¼" x 16 ½" piece sewn to the bottom. Finish with one DC7330 1 ¾" x 16 ½" piece sewn to the bottom. Make (4) 16 ½" square blocks total. Set aside.
6. Sew together (1) DC7330 2" x 16 ½" piece and (1) DC7328 Navy 2" x 16 ½" piece. Make (8) total. Set aside.
7. For the DC7328 Sand sashing pieces, place one K1063 2" square right sides together on top of one corner. Stitch diagonally across the corner of the squares. Press open. Trim excess from the back. Repeat for the other corner on the same end. Make (4) sashing strips with pieced corners at one end. Set aside.
8. To assemble the quilt from the top down, sew together the following:  
  
Row #1 - Sew one 3 ½" x 6 ½" feather block to each end of CX7273 6 ½" x 35 ½" piece.  
  
Row #2 - Sew one DC7330 Star block to the left side of one DC7328 Navy and DC7327 3 ½" x 16 ½" pieced strip. Add one 3 ½" K1063 star, another 3 ½" x 16 ½" strip and (1) DC7330 star. Sew to the bottom of Row #? Keep motifs upright.  
  
Row #3 - (1) 3 ½" x 16 ½" pieced strip from Step #6, (1) 16 ½" block, (1) DC7328 Sand 3 ½" x 16 ½" sashing with pieced tips at the bottom, (1) 16 ½" block, (1) 3 ½" x 16 ½" pieced strip.

Row #4 - (1) K1063 star, (1) DC7328 Sand sashing strip with pieced tips to the right, (1) DC7327 3 ½" square, (1) DC7328 sand sashing strip with pieced prints on the left side, (1) K1063 star.

Row #5 - Repeat Row #3, placing the pieced tip of DC7328 Sand sashing strip facing the top.

Row #6 - Repeat Row #2.

Row #7 - Repeat Row #1.

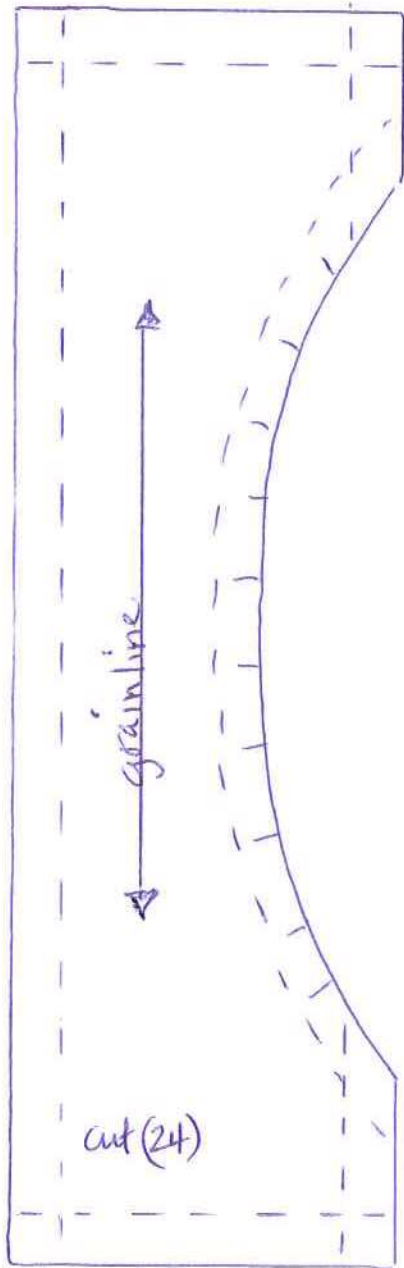
9. Layer backing, batting, and quilt top. Baste.

10. Quilt as desired.

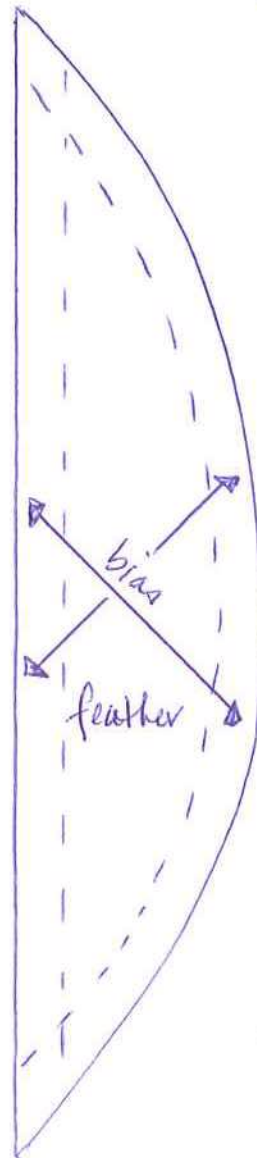
**NOTE:** The center DC7328 Sand sashing strips have been free motion quilted using dark blue thread and a serpentine leaf motif the length of sashing.

11. Bind quilt using DC7328 Ebony 2 ½" strips pieced as needed for length.

# "Midnight at the Owl-asis" Quilt



## PATTERNS



cut (12) left halves  
cut (12) right halves

\* Marvick © 2016

Directions:

1. To make one 3 ½" star block – place one SC5333 Cream 1 ¼" square, right sides together, on top of left side of K1063 1 ¼" x 2" piece. Sew diagonally from the lower outside corner to the upper inside corner of the cream squares. Press open. Trim excess fabric from the back. Repeat for the other side sewing from the lower right outside corner to the inside upper left corner. Press open. Trim excess fabric. Make (4) units. To assemble one star – Row #1 & #3 sew one K1063 1 ¼" square to each end of one 1 ¼" x 2" pieced unit. Make (2). Row #2. Sew one pieced 1 ¼" x 2" unit to each side of one SC5333 2" square as shown. Sew Row # 1 and #3 to the top and bottom of Row #2 as shown to make (1) 8-point star 3 ½" block. Make (12) star blocks with K1063 as the background and (12) with DC7330 as the background. Make (24) total. Set aside.
2. To make (1) 3" x 6" feather block – sew (1) ½ feather piece (DC7328 Ebony or Stone) into (1) K1063 2" x 6 ½" piece with the arc (see pattern). Clip curve to ease in fullness. Make (12) with DC7328 Stone and (12) with DC7328 Ebony. Sew one of each together to make (1) 3 ½" x 6 ½" feather block. Make (12) total. Set aside.
3. Sew one DC7328 Stone 1 ½" x 6 ½" piece to the top of one CX7273 6 ½" W x 8 ½" H piece. Sew one DC7328 Stone 1 ½" x 9 ½" piece to the right side. Sew one SC5333 Earth 1 ½" x 7 ½" piece to the bottom. Sew one SC5333 Earth 1 ½" x 10 ½" piece to the left side. Sew one DC7328 Navy 1 ½" x 8 ½" piece to the top. Sew one DC7328 Navy 1 ½" x 11 ½" piece to the right sides. Sew one K2264 1 ½" x 9 ½" piece to the bottom. Sew on K2264 1 ½" x 12 ½" piece to the left side. Make (4) blocks total. Set aside.
4. Sew together (1) DC7330 3 ½" star and (1) K1063 3 ½" star. Make (8) pairs. Sew one 3 ½" x 6 ½" feather block to one side of each of the pairs to make (8) 6 ½" squares. Sew together (2) 6 ½" blocks in alternating directions as shown. Make (4) units total each 6 ½" x 12 ½".
5. Sew one 6 ½" x 12 ½" unit to the right side of each owl block. Sew one CX7016 3 ¼" x 16 ½" piece to the bottom of the block. Sew one CX7016 3 ¼" x 16 ½" piece sewn to the bottom. Finish with one DC7330 1 ¾" x 16 ½" piece sewn to the bottom. Make (4) 16 ½" square blocks total. Set aside.
6. Sew together (1) DC7330 2" x 16 ½" piece and (1) DC7328 Navy 2" x 16 ½" piece. Make (8) total. Set aside.
7. For the DC7328 Sand sashing pieces, place one K1063 2" square right sides together on top of one corner. Stitch diagonally across the corner of the squares. Press open. Trim excess from the back. Repeat for the other corner on the same end. Make (4) sashing strips with pieced corners at one end. Set aside.
8. To assemble the quilt from the top down, sew together the following:  
  
Row #1 - Sew one 3 ½" x 6 ½" feather block to each end of CX7273 6 ½" x 35 ½" piece.  
  
Row #2 - Sew one DC7330 Star block to the left side of one DC7328 Navy and DC7327 3 ½" x 16 ½" pieced strip. Add one 3 ½" K1063 star, another 3 ½" x 16 ½" strip and (1) DC7330 star. Sew to the bottom of Row #? Keep motifs upright.  
  
Row #3 - (1) 3 ½" x 16 ½" pieced strip from Step #6, (1) 16 ½" block, (1) DC7328 Sand 3 ½" x 16 ½" sashing with pieced tips at the bottom, (1) 16 ½" block, (1) 3 ½" x 16 ½" pieced strip.

Row #4 - (1) K1063 star, (1) DC7328 Sand sashing strip with pieced tips to the right, (1) DC7327 3 ½" square, (1) DC7328 sand sashing strip with pieced prints on the left side, (1) K1063 star.

Row #5 - Repeat Row #3, placing the pieced tip of DC7328 Sand sashing strip facing the top.

Row #6 - Repeat Row #2.

Row #7 - Repeat Row #1.

9. Layer backing, batting, and quilt top. Baste.

10. Quilt as desired.

**NOTE:** The center DC7328 Sand sashing strips have been free motion quilted using dark blue thread and a serpentine leaf motif the length of sashing.

11. Bind quilt using DC7328 Ebony 2 ½" strips pieced as needed for length.