

michael miller FABRICS

SNOW CHATEAU *Quilt*

SIZE: 50" X 50" | SKILL LEVEL: CONFIDENT BEGINNER | DESIGNED BY MARINDA STEWART



- FEATURING CJ3591 SNOW CHATEAU & CJ3592 SNOWY WOODS -
FREE PATTERN AVAILABLE ON MICHAELMILLERFABRICS.COM



FABRIC REQUIREMENTS



CJ3591 Winter
Snow Chateau
2/3 Yard



CJ3592 Winter
Snowy Woods
2/3 Yard



CJ2932 Gray
Just Rocks
1-1/2 Yards
(includes binding)



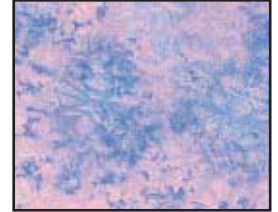
KRYSTA-1060
Krystal
Fat Quarter



CM0376 Glimmer
Fairy Frost
Fat Quarter



CM0376 Orchid
Fairy Frost
Fat Quarter



CM0376 Mineral
Fairy Frost
Fat Quarter



CM0376 Wedgewood
Fairy Frost
Fat Quarter



CM0376 Powder Blue
Fairy Frost
Fat Quarter



Suggested Backing:
CJ2932 Gray
Just Rocks
3-1/4 Yards



Batting:
58" x 58"

QUILT KITTING YARDAGE INFORMATION:

SKU	FOR 12 KITS	FOR 24 KITS
CJ3591 WINTER	8 YARDS (1 BOLT)	16 YARDS (2 BOLTS)
CJ3592 WINTER	8 YARDS (1 BOLT)	16 YARDS (2 BOLTS)
CJ2932 GRAY(INCLUDES BINDING)	18 YARDS (2 BOLTS)	36 YARDS (3 BOLTS)
KRYSTA-1060	3 YARDS (1 BOLT)	6 YARDS (1 BOLT)
CM0376 GLIMMER	3 YARDS (1 BOLT)	6 YARDS (1 BOLT)
CM0376 ORCHID	3 YARDS (1 BOLT)	6 YARDS (1 BOLT)
CM0376 MINERAL	3 YARDS (1 BOLT)	6 YARDS (1 BOLT)
CM0376 WEDGEWOOD	3 YARDS (1 BOLT)	6 YARDS (1 BOLT)
CM0376 POWDER BLUE	3 YARDS (1 BOLT)	6 YARDS (1 BOLT)
SUGGESTED BACKING: CJ3592 GRAY	39 YARDS (3 BOLTS)	78 YARDS (6 BOLTS)

WE DO OUR BEST TO MAKE SURE THESE ARE ACCURATE YARDAGES
BUT THESE ARE ESTIMATES UNTIL THE FINAL PATTERN IS COMPLETED AND EDITED. THANK YOU.

SNOW CHATEAU

Quilt designed by Marinda Stewart. Quilt measures approximately 50" x 50".

Always measure the quilt top before cutting border lengths.

Fabric	Yardage	Cutting
CJ3591 WINTER	2/3 YARD	(1) 20-1/2" square - center on motif (1) 6"H x 22-1/2"W from bottom of panel (1) 6"H x 22-1/2"W from top of panel (3) 6-1/2" squares
CJ3592 WINTER	2/3 YARD	(2) 6"W x 22-1/2"H from panel (9) 6-1/2" squares
CJ2932 GRAY	1-1/2 YARDS	(2) 2-1/2"H x 33-1/2" W - cut from WOF* (2) 1-1/2"H x 20-1/2" W - cut from WOF* (8) 2-1/4"H x 6-1/2" W - cut from WOF* (2) 1-1/2"W x 22-1/2"H - cut from LOF** (2) 2-1/2"W x 37-1/2"H - cut from LOF** (8) 2-1/4"W x 6-1/2"H - cut from LOF** (5) 2-1/2" x WOF - Binding
KRYSTA-1060	FAT QUARTER	(1) 7" square (2) 7-1/2" squares
CMO376 ORCHID	FAT QUARTER	(1) 7" square (2) 7-1/2" squares
CM0376 WEDGEWOOD	FAT QUARTER	(1) 7" square (2) 7-1/2" squares
CM0376 POWDER BLUE	FAT QUARTER	(1) 7" square (2) 7-1/2" squares
CM0376 MINERAL	FAT QUARTER	(4) 6-1/2" squares
CM0376 GLIMMER	FAT QUARTER	(8) Snowflakes (see pattern)

* width of fabric

** length of fabric

You will also need:

Suggested backing: 3-1/4 yards CJ2932 Just Rocks in Gray (or your choice), 58" x 58" batting, scissors, straight pins, mat, rotary cutter, acrylic ruler, threads to match (including silver metallic), fusible web

Disclaimers

This pattern is provided as a courtesy to quilt stores, catalogs and quilters. Michael Miller Fabrics LLC is not responsible for the accuracy of any kits packaged to accompany this pattern. Please direct any inquiries to kit maker.

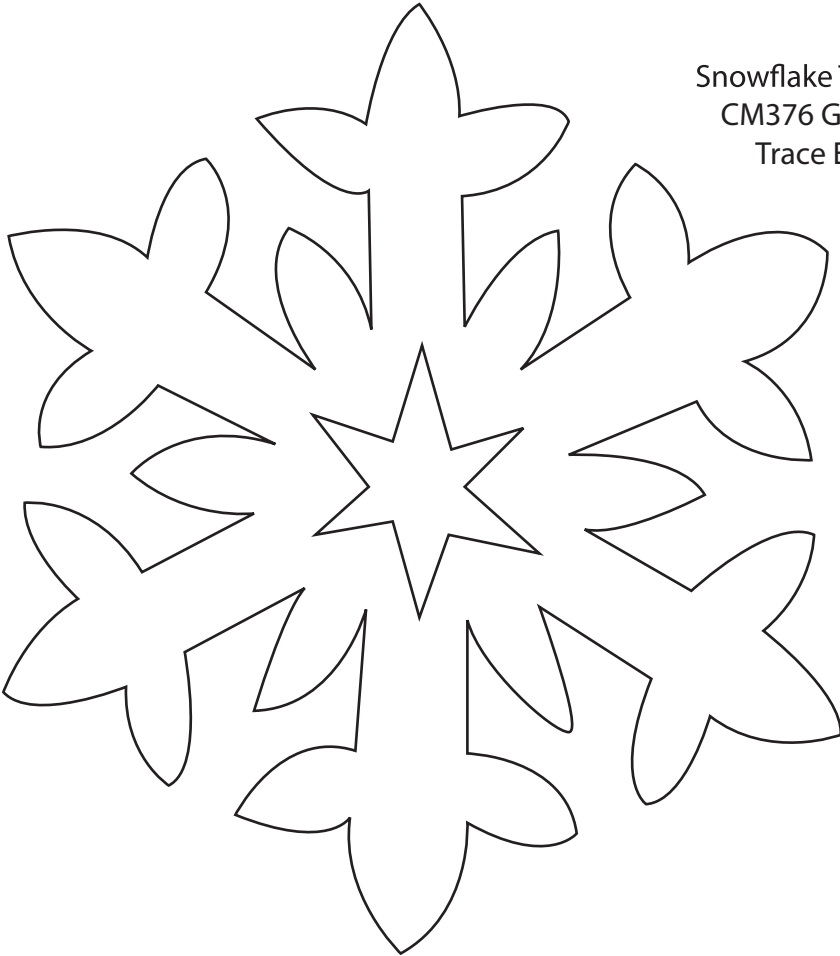
Yardage requirements for this pattern may allow for excess yardage to accommodate specific placement of motifs or to allow for any fussy-cutting to achieve the finished quilt design.

While every attempt has been made to give accurate measurements, yardage requirements and construction directions, this does not allow for personal variations in measuring, cutting and/or sewing. The enclosed directions were used in the construction of the original quilt.

Directions:

- 1) Sew one CJ2932 1-1/2"H x 20-1/2"W strip to the top and bottom of the CJ3591 20-1/2" square. Sew one CJ2932 1-1/2"W x 22-1/2"H strip to each side.
- 2) Sew one CJ3591 6"H x 22-1/2"W strip (from top of panel) to the top of square. Sew one CJ3591 6"H x 22-1/2"W strip (from bottom of panel) to the bottom of the square.
- 3) To make the small triangle blocks - layer one each 7" square, right sides up - CM0376 Orchid, Wedgewood, Powder Blue and KRYSTA-1060. Align all raw edges. Carefully cut across both diagonals from corner to corner to make (4) equalized triangles. Sew together one triangle of each color to make (1) square as shown. Trim to 6" square. Make (4) total.
- 4) Following the manufacturer's directions, trace (8) snowflakes onto the paper side of the fusible web. Rough cut out. Iron each onto the wrong side of CM0376 Glimmer. Cut out on pattern lines. Remove paper backing. Iron one snowflake onto the center of each 6" triangle block. Machine satin stitch raw edges with silver metallic thread to finish. Set aside remaining (4) snowflakes.
- 5) Sew one 6" triangle block to the top and bottom of each CJ3592 6"W x 22-1/2"H strip. Sew one pieced strip to each side of the center block.
- 6) Sew one CJ2932 2-1/2"W x 33-1/2"H strip to each side of the quilt. Sew one CJ2932 2-1/2"H x 37-1/2"W strip to the top and bottom.
- 7) To make the large triangle blocks, repeat step #3 using the 7-1/2" squares of CM0376 Orchid, Wedgewood, Powder Blue and KRYST-1060. Make (8) blocks. Trim each to 6-1/2" squares. Set aside.
- 8) Following the directions in step #4, iron the remaining snowflakes onto CM0376 Mineral 6-1/2" squares. Finish the edges with silver metallic thread as shown.
- 9) Refer to the photo for block placement. For each side of the quilt, begin and end with a 6-1/2" block. Use (3) 6-1/2" motifs, (1) 6-1/2" snowflake and (1) 6-1/2" triangle block in each row. Separate each block with a CJ2932 2-1/4"H x 6-1/2"W piece. Keep motifs upright. Sew one pieced strip to each side of the quilt.
- 10) Repeat step #9 for the top and bottom pieced strips. Refer to the photo for block placement. Use (2) triangle blocks, (1) snowflake and (3) motif blocks in each row separated by CJ2932 2-1/4"W x 6-1/2"H pieces. Sew one row to the top and bottom of the quilt.
- 11) For the backing - fold CJ2932 piece in half across the width. Cut into (2) equal pieces. Remove selvage edges. Sew with right sides together along one trimmed edge to make a large square. Trim to 58" x 58" for backing.
- 12) Layer backing, batting and quilt top. Baste.
- 13) Quilt as desired.
- 14) Bind quilt using CJ2932 2-12" strips, pieced as needed for length.

Snow Chateau Template



Snowflake Template
CM376 Glimmer
Trace Eight