

OVER THE MOUNTAIN Quilt



Over the Mountain Quilt

Fabric Requirements - pg.1

Finished Quilt Size: 72" x 82"

Skill Level: Beginner



DC7541 Royal
MAGGIE JEAN 1/2 yard



DC7543 Royal
FROLICKING 1/2 yard



DC7544 Blue
ON THE WIND 1/2 yard



DC7541 Sky
MAGGIE JEAN 1/2 yard



DC7546 Blue
TRESSE 1/2 yard



DC7543 Apple
FROLICKING 1/2 yard



DC7542 Lime
BIG LOVE 1/2 yard



DC7546 Lime
TRESSE 1/2 yard



DC7540 Spring
SUMMER PORTRAIT 1/2 yard



DC7543 Orange
FROLICKING 1/4 yard



DC7542 Tangerine
BIG LOVE 1/4 yard



DC7546 Citrus
TRESSE 1/4 yard



DC7547 Spring
FROLIC BORDER 1/2 yard



DC7544 Spring
ON THE WIND 1/4 yard



DC7542 Candy
BIG LOVE 1/4 yard



DC7546 Raspberry
TRESSE 1/4 yard



DC7548 Spring
MINI BARGELLO
BINDING: 3/4 yard



DC7546 Citrus
TRESSE
BACKING: 5 yards

Continued...

Over the Mountain Quilt

Fabric Requirements - pg.2

Finished Quilt Size: 72" x 82"

Skill Level: Beginner



SC5333 Wave 1/2 yard
COTTON COUTURE



SC5333 Sky 1/2 yard
COTTON COUTURE



SC5333 Cobalt 1/2 yard
COTTON COUTURE



SC5333 Electric 1/2 yard
COTTON COUTURE



SC5333 Midnight 1/2 yard
COTTON COUTURE



SC5333 Pine 1/2 yard
COTTON COUTURE



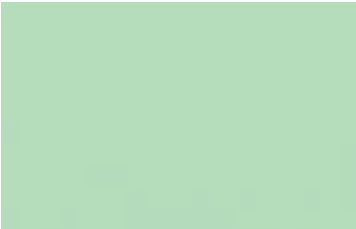
SC5333 Green 1/2 yard
COTTON COUTURE



SC5333 Fern 1/2 yard
COTTON COUTURE



SC5333 Apple 1/2 yard
COTTON COUTURE



SC5333 Mist 1/2 yard
COTTON COUTURE



SC5333 Pink 1/4 yard
COTTON COUTURE



SC5333 Flower 1/4 yard
COTTON COUTURE



SC5333 Princess 1/4 yard
COTTON COUTURE



SC5333 Raspberry 1/4 yard
COTTON COUTURE



SC5333 Melon 1/4 yard
COTTON COUTURE



SC5333 Apricot 1/4 yard
COTTON COUTURE

Also Needed:

- 80" x 90" quilt batting.
- A rotary cutter, a long acrylic ruler, a 60° triangle acrylic ruler, cutting mat, thread, scissors, pins, pencil.

Over the Mountain Quilt

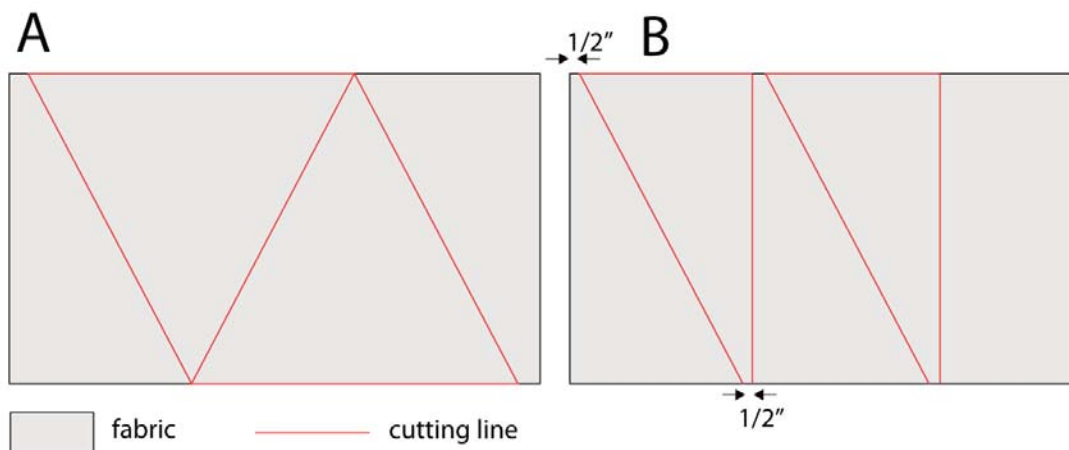
Cutting Instructions:

- DC7548 Spring - Mini Bargello
- DC7548 Spring - Mini Bargello
- All other fabrics
- Cut 8 rows 2 1/4" x width of fabric (WOF). Set aside for binding.
- Cut 1 piece 90" x WOF. Cut 1 piece 90" x 34". Set aside for backing.
- Referring to the following chart, cut the appropriate number of strips 5" x WOF. Subcut the corresponding number of triangles as per **Diagram A** or half-triangles as per **Diagram B**, using the 60° triangle ruler.

FABRIC	CUT STRIPS 5" x WOF	CUT TRIANGLES	FABRIC	CUT STRIPS 5" x WOF	CUT HALF- TRIANGLES
DC7541 Sky MAGGIE JEAN	2	24	SC5333 Midnight COTTON COUTURE	2	48
SC5333 Electric COTTON COUTURE	2	24	DC7541 Royal MAGGIE JEAN	2	48
DC7546 Blue TRESSE	2	24	SC5333 Cobalt COTTON COUTURE	2	48
SC5333 Sky COTTON COUTURE	2	26	DC7543 Royal FROLICKING	3	52
SC5333 Wave COTTON COUTURE	3	28	DC7544 Blue ON THE WIND	3	56
DC7544 Spring ON THE WIND	1	5	SC5333 Princess COTTON COUTURE	1	10
SC5333 Pink COTTON COUTURE	1	5	DC7542 Tangerine BIG LOVE	1	10
DC7546 Raspberry TRESSE	1	5	SC5333 Raspberry COTTON COUTURE	1	10
SC5333 Melon COTTON COUTURE	1	5	DC7543 Orange FROLICKING	1	10
DC7546 Citrus TRESSE	1	5	SC5333 Apricot COTTON COUTURE	1	10
SC5333 Flower COTTON COUTURE	1	5	DC7542 Candy BIG LOVE	1	10
SC5333 Mist COTTON COUTURE	3	29	DC7542 Lime BIG LOVE	3	58
DC7547 Spring FROLIC BORDER	3	27	SC5333 Apple COTTON COUTURE	3	54
SC5333 Fern COTTON COUTURE	2	25	DC7543 Apple FROLICKING	3	50
DC7540 Spring SUMMER PORTRAIT	2	24	SC5333 Green COTTON COUTURE	2	48
DC7546 Lime TRESSE	2	24	SC5333 Pine COTTON COUTURE	2	48

Over the Mountain Quilt

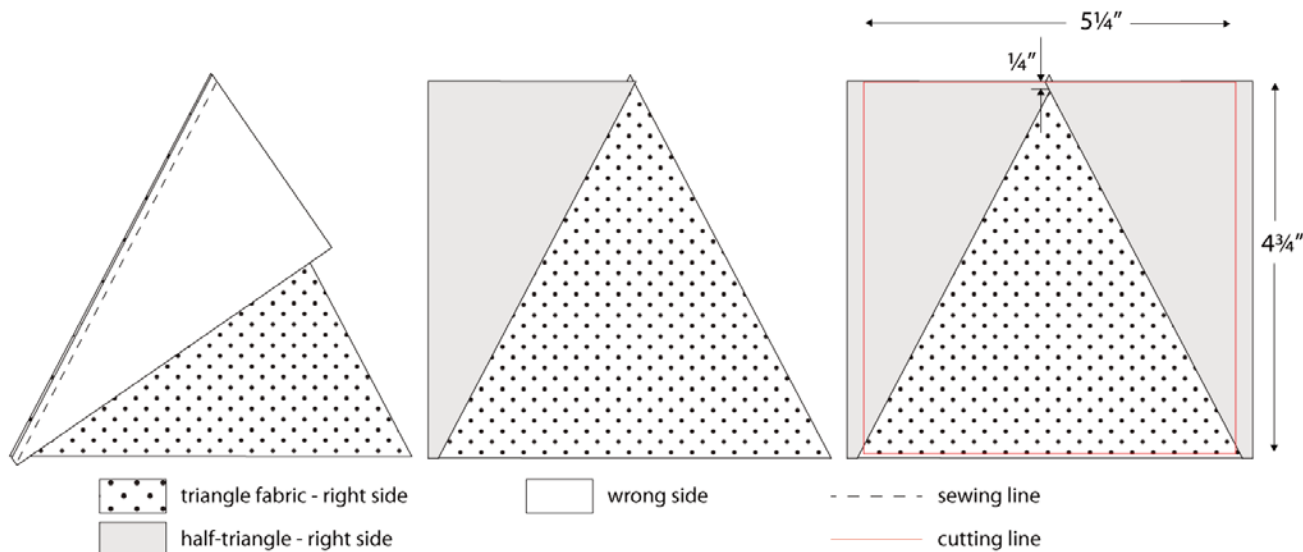
Cutting Instructions Cont'd:



** All seam allowances are 1/4".

Making Equilateral Triangle Blocks:

- Each block is made up of a triangle and 2 half-triangles. Each line of the chart on the previous page lists the coordinating pairs of fabrics (eg. DC7541Sky triangles get paired with SC5333 Midnight half-triangles, etc.).
- Place a half-triangle on top of a triangle, Right Sides Together (RST), so that the longest edge runs along the left edge of the triangle & the half-triangle's tip is at the bottom. Match the points at the top of the triangle. Sew along left edge. Press seams toward half-triangle.
- Place another half-triangle on top of this, RST, so that longest edge runs along the right edge of the equilateral triangle & the half-triangle's tip is at the bottom. Sew along right edge. Press seams toward the half-triangle.
- Square up blocks to 4 3/4" high x 5 1/4" wide, centering triangle & leaving 1/4" seam allowance beyond top triangle point.
- Repeat with all equilateral triangles.



Over the Mountain Quilt

Piecing Quilt Top:

- Using the **Quilt Layout Diagram** as a reference, lay out finished blocks to form the quilt top, 15 blocks across by 19 blocks down.
- Sew blocks together, one row at a time. Press seams open.
- Pin rows together, matching seams. Sew rows together. Press seams open.

Assembling Quilt:

Sew together backing pieces along long edges. Press seam open.

Layer backing, batting and quilt top. Baste or pin.

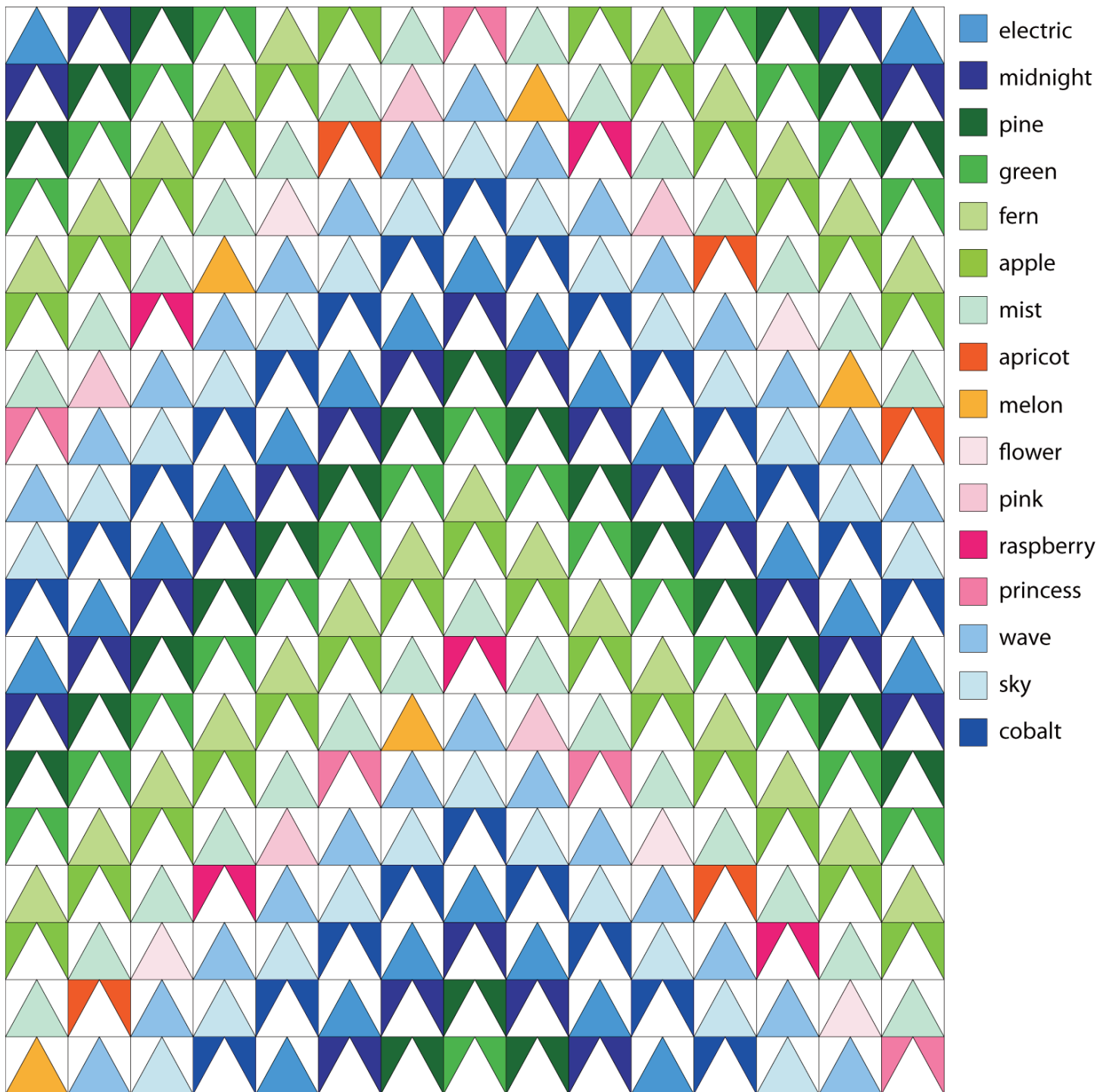
Quilt as desired.

Square up quilt.

Join binding strips together and bind in your preferred fashion.

Over the Mountain Quilt

Quilt Layout Diagram



Colors indicated are the Cotton Couture solids used in each block.