

michael miller FABRICS

UP IN THE CLOUDS *Quilt*

Quilt size: 36" W x 48" H | Pillow size: 16" W x 12" H | Designed by Marsha Evans Moore



Free Pattern available on michaelmillerfabrics.com



FABRIC REQUIREMENTS



**CX7535-PINK
PLAYGROUND PALS**
5/8 YARD



**CX7537-CANDY
FIELD DAY**
5/8 YARD



**CX7536-SUNSHINE
PLAYING AROUND**
1/2 YARD



**CX7539-PINK
CLOVER BLOSSOM**
1/4 YARD



**CX7539-AQUA
CLOVER BLOSSOM**
3/8 YARD



**CX7536-GRASS
PLAYING AROUND**
5/8 YARD



**CX7536-CANDY
PLAYING AROUND**
1/4 YARD



**CX7538-WATERMELON
FLY,FLY BUTTERFLY**
3/8 YARD



**CX7538-CANDY
FLY,FLY BUTTERFLY**
3/8 YARD



**CX7538-PATIO
FLY,FLY BUTTERFLY**
3/4 YARD



BACKING OF YOUR CHOICE
1-1/2 YARDS

FABRIC REQUIREMENTS

SKU	YARDAGE PER ONE QUILT	# OF BOLTS FOR 12 KITS	# OF BOLTS FOR 24 KITS
(A) CX7535-PINK	5/8 YARD	1 BOLT (7.5 YARDS)	2 BOLTS (15 YARDS)
(B) CX7537-CANDY	5/8 YARD	1 BOLT (7.5 YARDS)	2 BOLTS (15 YARDS)
(C) CX7536-GRASS	5/8 YARD	1 BOLT (7.5 YARDS)	2 BOLTS (15 YARDS)
(D) CX7536-SUNSHINE	1/2 YARD	1 BOLT (6 YARDS)	1 BOLT (12 YARDS)
(E) CX7536-CANDY	1/4 YARD	1 BOLT (3 YARDS)	1 BOLT (6 YARDS)
(F) CX7539-PINK	1/4 YARD	1 BOLT (3 YARDS)	1 BOLT (6 YARDS)
(G) CX7539-AQUA	3/8 YARD	1 BOLT (4.5 YARDS)	1 BOLT (9 YARDS)
(H) CX7538-PATIO	3/4 YARD	1 BOLT (9 YARDS)	2 BOLTS (18 YARDS)
(I) CX7538-WATERMELON	3/8 YARD	1 BOLT (4.5 YARDS)	1 BOLT (9 YARDS)
(J) CX7538-CANDY	3/8 YARD	1 BOLT (4.5 YARDS)	1 BOLT (9 YARDS)
(BACKING)	1-1/2 YARDS	2 BOLTS (18 YARDS)	3 BOLTS (36 YARDS)
TOTAL BOLTS NEEDED		12 BOLTS (10 W/O BACK)	17 BOLTS (14 W/O BACK)

WE DO OUR BEST TO MAKE SURE THESE ARE ACCURATE YARDAGES BUT THESE ARE ESTIMATES UNTIL THE FINAL PATTERN IS COMPLETED AND EDITED. THANK YOU.

Let's Play in the Clouds

Quilt: 36" x 48"

Pillow: 12" x 16"

Materials required:

Fabric	Yardage	Cutting*
Playground Pals CX7535	5/8 yard	Clouds 6, 16, 23, 8, 15 and 20 (7) (Pillow Back 15" x 13")
Field Day CX7537	5/8 yard	Clouds 5 (cut 2), 13, 26, 19 and 23 (8)
Playing Around – Green CX7536	5/8 yard	Clouds 7, 15, 20, 6, 13 and 22 (6)
Playing Around – Yellow CX7536	½ yard	Clouds 1, 11, 19, 4, 9, 14 and 21 (14, Pillow Rectangle 4 ¼" x 3 ½")
Playing Around – Pink CX7536	¼ yard	Clouds 4, 25, 7 and 26 (12)
Clover Blossom – Pink CX7539	¼ yard	Clouds 1, 14, and 17 (5)
Clover Blossom – Blue CX7539	3/8 yard	Clouds 2, 9, 17, 12 and 24 (12) (Pillow Back 9 ½" x 13")
Fly Fly Butterfly - Blue CX 7538	¾ yard	Clouds 10, 22, 2 and 16 Cut 5 2 ½" x WOF for binding (Cut 3 1 ½" by 12" bias strips for cording)
Fly Fly Butterfly - Coral CX 7538	3/8 yard	Clouds 3, 8, 18, 24, 10 and 25 (11) Quilt Rectangle 18 ½" x 3 1/4"
Fly Fly Butterfly - White CX 7538	3/8 yard	Clouds 12, 21, 3, 11 and 18 Quilt Rectangle 18 ½" x 3 1/4" (Pillow Rectangle 13 1/4" x 3 1/2")

*See patterns and cutting instructions steps 1-4 below. Numbers in parentheses are the clouds for the pillow.

1 ½ yard backing for quilt

14" x 18" piece backing for pillow

You will also need: thread to match fabrics, sewing machine, pins, a sewing needle, iron, scissors, 26" by 38" piece of tracing paper and tracing paper for cloud patterns, pencil and ruler, water soluble marking pen; 40" x 52" piece quilt batting for quilt;

Pattern and Cutting

1. Draw a 2" grid on a 26" by 38 piece of tracing paper. Enlarge the master pattern for the clouds including the numbers.
2. To make patterns for the clouds, trace each cloud onto tracing paper. Add $\frac{1}{4}$ " seam allowance to the top edge and side and $\frac{1}{2}$ " seam allowance to the bottom edges. Add $\frac{1}{2}$ " to the edges along the sides of the rectangle. Number each cloud.
3. Draw a 17" x 13" rectangle for the pillow pattern on tracing paper. Center it over cloud 8 as shown in the photo of the pillow. Trace the lines of the clouds on the pattern. Before cutting the clouds for the pillow, fold under the edges of the clouds along the edge of the pillow pattern. Draw clouds 11 and 14 extending the edges to match the edges of the pillow.
4. Cut the clouds and the rectangles from the fabrics indicated on the cutting chart. Using a water-soluble marking pen, write the number on each fabric cloud.

Directions for Quilt

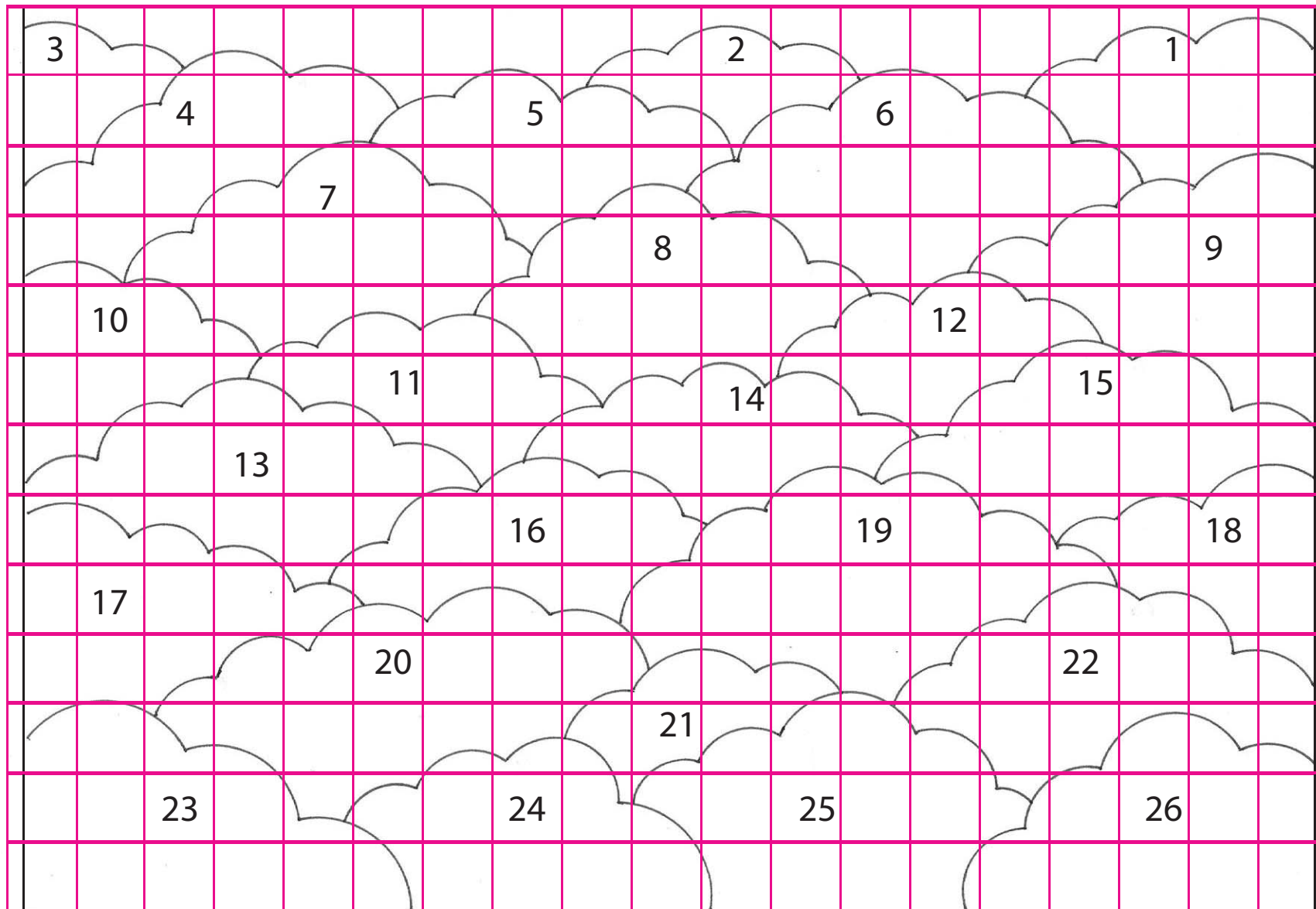
1. Using matching thread, stitch along the seamline of the top and side edges of each cloud. Clip the seam allowances almost the stitching. Press under the seam allowance along the stitching.
2. Stitch the rectangles for the top edge together along one short end.
3. Following the photo and the master pattern, pin each cloud in place beginning at the top edge pinning clouds 1, 2 and 3 to the rectangles using your master pattern as a guide. Stitch each cloud in place along the top and side edges using matching thread and a blind hem stitch.
4. Pin, then stitch clouds 4, 5 and 6 in place matching the seamlines in the same manner.
5. Repeat joining clouds 7-26 a row at a time to complete the upper half of the quilt top.
6. Then begin again with the remaining clouds 1, 2 and 3 pinning them to the lower edge of clouds 23-26 so they overlap as shown in the photo.
7. Join clouds 4-26 to complete the lower half of quilt top.
8. Trim the edges if necessary to make a rectangle.
9. Layer the backing, batting and quilt top. Quilt along the top edges of the clouds. Echo quilt inside each cloud as desired.

10. Trim the ends of the binding strips diagonally. Stitch the ends of the strips together. Fold the binding in half lengthwise with right sides out and press. Stitch the binding around the edges of the quilt using a 3/8" seam allowance and mitering at the corners. Join the ends neatly. Fold the binding over the edge of the quilt mitering the corners and slipstitch the fold in place along the stitching.

Directions for Pillow

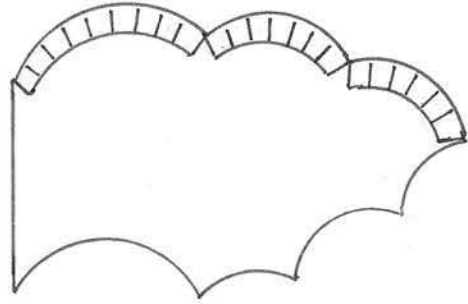
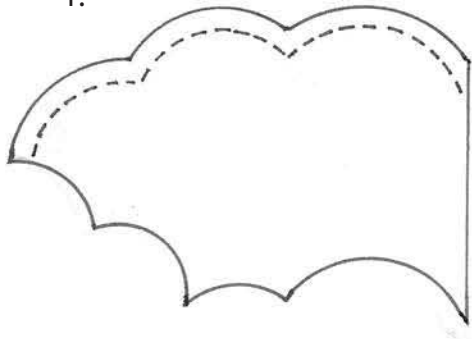
1. Following steps 1-4 for the quilt, assemble the clouds and rectangles.
2. Layer the backing, batting and pillow top. Quilt along the top edges of the clouds. Echo quilt inside each cloud as desired.
3. To make cording, stitch the bias strips together along the straight grain edges using a 1/4" seam allowance.
4. Fold the cording in half with right sides together inserting the cording inside along the fold. Baste along the edge of the cording using a zipper foot.
5. Pin the cording around the right side of the pillow top matching the raw edges. Join the ends neatly. Baste the cording to the pillow along the previous basting.
6. Turn under 1" then 1" again on one 13" edge of each pillow back piece. Stitch the hems in place. Mark one buttonhole in the center of the hem of the large back piece. Then mark two additional buttonholes each 4 1/4" from the center.
7. Place the large back piece over the small back piece so they make a rectangle 17" long. Baste the overlapping edges together. Sew buttons in place under the buttonholes.
8. Pin the front and back together along the edges. Stitch them together along the seamline of the cording. Zigzag along the edge of the seam allowance.
9. Turn pillow cover right side out.

Cloud Pattern

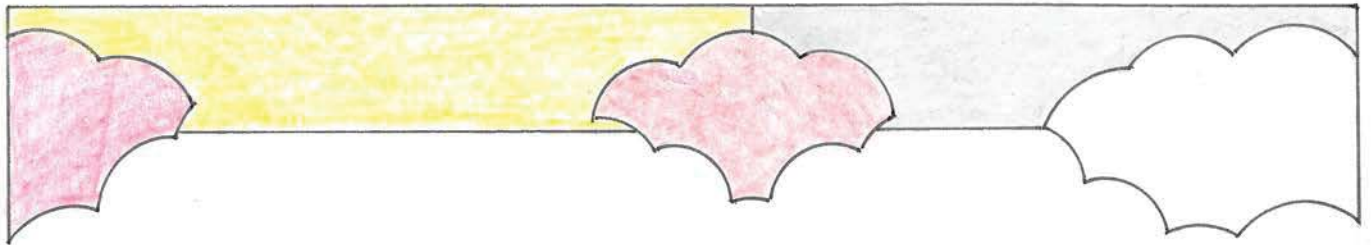


Each Square = 2"

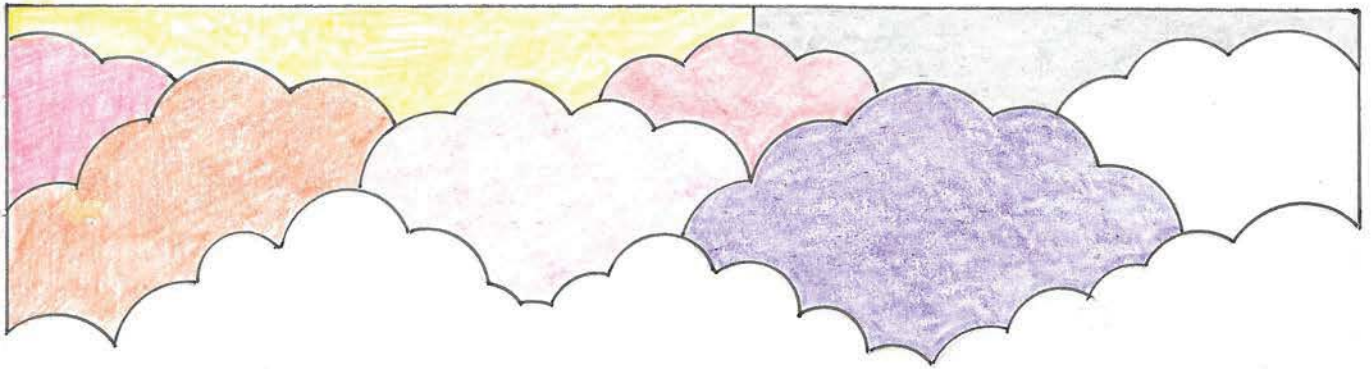
1.



3.



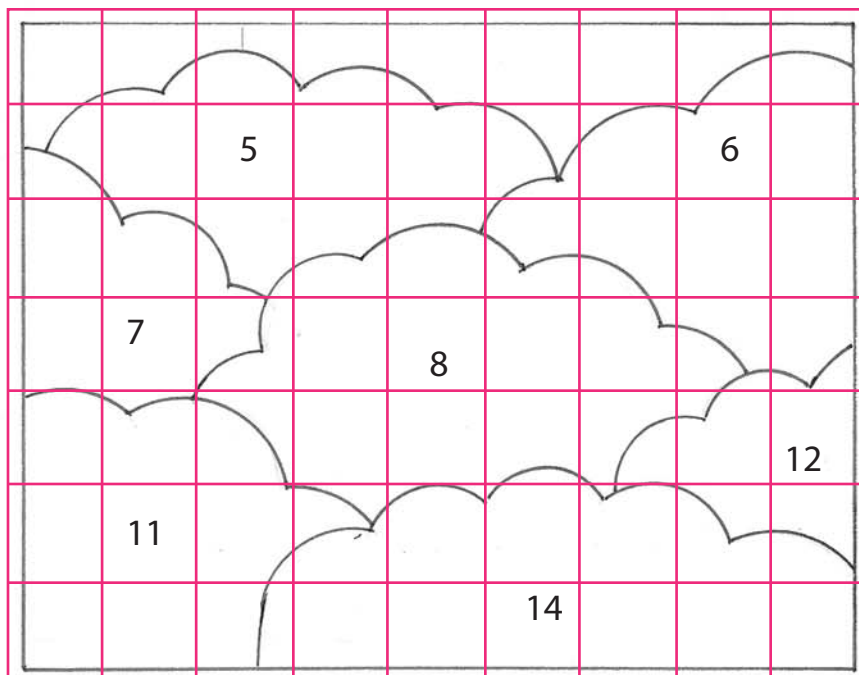
4.



Pattern and Cutting 2.



Pillow Pattern



Each square = 2"

