

Butterflies & Birds Marine

Quilt Design by: Heidi Pridemore • Level: Intermediate

SIZE : 51" x 63"



michae|miller FABRICS



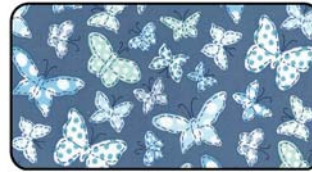
Fabric Requirements



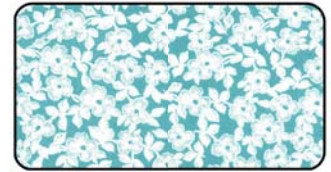
DC7374-Marine
1/2 yard (Blocks)



DC7370-Seafoam
5/8 yard (Border)



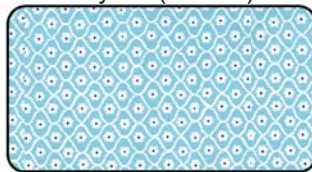
DC7373-Wedgewood
1/2 yard (Blocks)



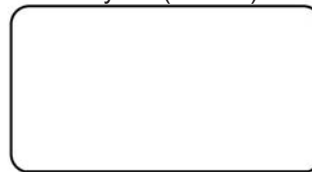
DC7372-Mermaid
1/2 yard (Blocks)



DC7372-Navy
1/4 yard (Blocks)



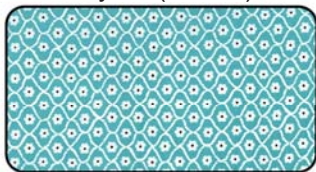
DC7370-Ribbon
1/4 yard (Blocks)



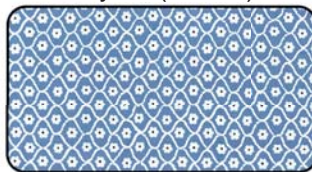
SC5333-Bright White
7/8 yard (Background)



DC7368-Marine
2 yards (Border)



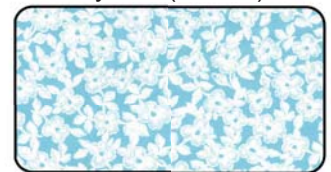
DC7370-Mermaid
3/4 yard (Blocks & Binding)



DC7370-Wedgewood
1/2 yard (Blocks)



DC7372-Ribbon
3/8 yard (Border)



DC7372-Ribbon
3 1/2 yards (Backing)

SKU

- (A) DC7374-Marine
- (B) DC7370-Seafoam
- (C) DC7373-Wedgewood
- (D) DC7372-Mermaid
- (E) DC7372-Navy
- (F) DC7370-Ribbon
- (G) SC5333-Bright White
- (H) DC7368-Marine
- (I) DC7370-Mermaid
- (J) DC7370-Wedgewood
- (K) DC7372-Ribbon
- Back DC7372-Ribbon

of bolts for 12 Kits

- 1 bolt (6 yards)
- 1 bolt (7 1/2 yards)
- 1 bolt (6 yards)
- 1 bolt (6 yards)
- 1 bolt (3 yards)
- 1 bolt (3 yards)
- 1 bolt (10 1/2 yards)
- 2 bolts (24 yards)
- 1 bolt (9 yards)
- 1 bolt (6 yards)
- 1 bolt (2 1/4 yards)
- 3 bolts (40 yards)

of bolts for 24 Kits

- 1 bolt (12 yards)
- 1 bolt (15 yards)
- 1 bolt (12 yards)
- 1 bolt (12 yards)
- 1 bolt (6 yards)
- 1 bolt (6 yards)
- 2 bolts (21 yards)
- 4 bolts (48 yards)
- 2 bolts (18 yards)
- 1 bolt (12 yards)
- 1 bolt (4 1/2 yards)
- 6 bolts (80 yards)

TOTAL BOLTS NEEDED

15 Bolts (12 w/o Back)

22 Bolts (16 w/o Back)

While every effort has been made to make sure these are accurate yardages, please note that these are only estimates until the final pattern is completed and edited. Thank you.

Tel: 212.704.0774

Fax: 212.633.0272

email: info@michaelmillerfabrics.com

www.michaelmillerfabrics.com

"Butterfly Row - Butterfly & Birds - Marine"

Quilt by Heidi Pridemore

Size: Approximately 51" x 63" Skill Level: Intermediate

Materials

Cutting instructions

Please Note: All strips are cut across the width of fabric (WOF) from selvage to selvage edge unless otherwise noted.

	Fabric	Yardage	Cutting
(A)	DC7374-Marine Bird Watch – Marine	½ yard	<ul style="list-style-type: none"> • Cut two 5 ½" x WOF strips. Sub-cut the strips into twelve 5 ½" squares.
(B)	DC7370-Seafoam Flower Net – Seafoam	⅝ yard	<ul style="list-style-type: none"> • Cut one 6 ½" x WOF strip. Sub-cut the strip into twelve 1" x 6 ½" strips and twelve 1" x 5 ½" strips. • Cut three 1 ½" x WOF strips. Sew the strips together end to end with diagonal seams and cut two 1 ½" x 51 ½" strips. • Cut two 1 ½" x 41 ½" WOF strips.
(C)	DC7373-Wedgewood Butterfly Folly – Wedgewood	½ yard	<ul style="list-style-type: none"> • Cut three 3 ⅞" x WOF strips. Sub-cut the strips into twenty-four 3 ⅞" squares. Cut the squares across one diagonal to make forty-eight triangles.
(D)	DC7372-Mermaid Flower Jam - Mermaid	½ yard	<ul style="list-style-type: none"> • Cut three 4 ¼" x WOF strips. Sub-cut the strips into twenty-four 4 ¼" squares. Cut the squares across both diagonals to make ninety-six triangles.
(E)	DC7372-Navy Flower Jam – Navy	¼ yard	<ul style="list-style-type: none"> • Cut three 2" x WOF strips. Sub-cut the strips into forty-eight 2" squares.
(F)	DC7370-Ribbon Flower Net – Ribbon	¼ yard	<ul style="list-style-type: none"> • Cut three 2" x WOF strips. Sub-cut the strips into forty-eight 2" squares.
(G)	SC5333-Bright White Cotton Couture – Bright White	⅞ yard	<ul style="list-style-type: none"> • Cut five 2" x WOF strips. Sub-cut the strip into ninety-six 2" squares. • Cut three 4 ¼" x WOF strips. Sub-cut the strips into twenty-four 4 ¼" squares. Cut the squares across both diagonals to make ninety-six triangles.
(H)	DC7368-Marine Butterfly Row – Marine	2 yards	<ul style="list-style-type: none"> • Cut two 5 ½" x 67" LOF strips. • Cut two 5 ½" x 55" LOF strips.
(I)	DC7370-Mermaid Flower Net – Mermaid	¾ yard	<ul style="list-style-type: none"> • Cut one 6 ½" x WOF strip. Sub-cut the strip into twelve 1" x 6 ½" strips and twelve 1" x 5 ½" strips. • Cut six 2 ½" x WOF strips for the binding.
(J)	DC7370-Wedgewood Flower Net - Wedgewood	½ yard	<ul style="list-style-type: none"> • Cut three 3 ⅞" x WOF strips. Sub-cut the strips into twenty-four 3 ⅞" squares. Cut the squares across one diagonal to make forty-eight triangles.
(K)	DC7372-Ribbon Flower Jam – Ribbon	⅝ yard	<ul style="list-style-type: none"> • Cut three 2" x WOF strips. Sew the strips together end to end with diagonal seams and cut two 2" x 48 ½" strips. • Cut two 2" x 39 ½" WOF strips.
Backing	DC7372-Ribbon Flower Jam – Ribbon	3 ⅓ yards	<ul style="list-style-type: none"> • Cut two 59" x WOF strips. Piece the strips together and trim to make the 59" x 71" pieced backing.

You will also need:

- 59" x 71" batting, threads to match, scissors, straight pins, acrylic ruler, rotary cutter and mat.

Disclaimers

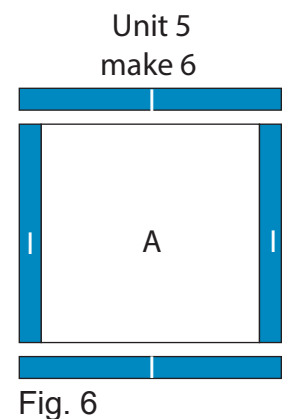
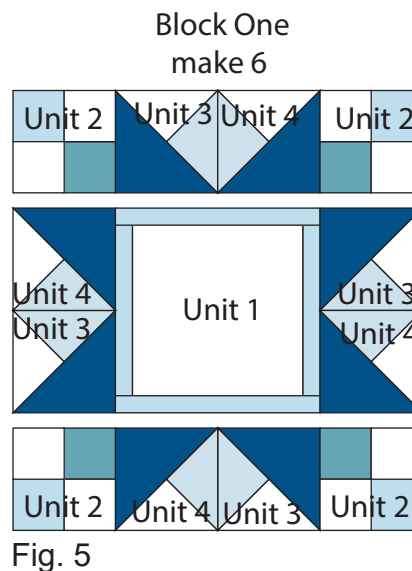
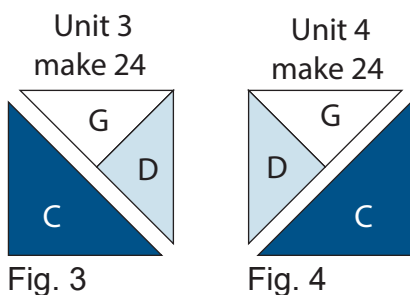
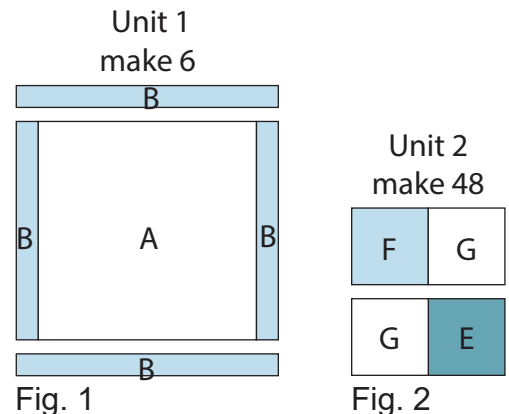
This pattern is provided as a courtesy to quilt stores, catalogs and quilters. Michael Miller Fabrics, LLC is not responsible for the accuracy of any kits packaged to accompany this pattern. Please direct any inquiries to the kit maker.

Yardage requirements for this pattern may allow for excess yardage to accommodate specific placement of motifs or to allow for any fussy-cutting to achieve the finished quilt design.

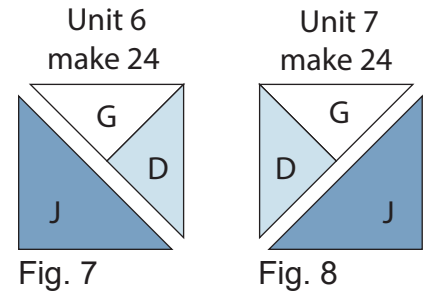
While every attempt has been made to give accurate measurements, yardage requirements and construction directions; this does not allow personal variations in measuring, cutting or sewing. The enclosed directions were used in the construction of the original quilt.

Block Assembly

- Sew one 1" x 5 1/2" Fabric B strip to each side of one 5 1/2" Fabric A square. Sew one 1" x 6 1/2" Fabric B strip to the top and to the bottom of the Fabric A square to make one Unit 1 block (Fig. 1). Repeat to make six Unit 1 blocks total.
- Sew one 2" Fabric F square, two 2" Fabric G squares and one 2" Fabric E square together to make one Unit 2 block (Fig. 2). Repeat to make forty-eight Unit 2 blocks total.
- Sew one Fabric C triangle, one Fabric G triangle and one Fabric D triangle together to make one Unit 3 block (Fig. 3). Repeat to make twenty-four Unit 3 blocks.
- Sew one Fabric D triangle, one Fabric G triangle and one Fabric C triangle together to make one Unit 4 block (Fig. 4). Repeat to make twenty-four Unit 4 blocks.
- Sew one Unit 3 block to the left side of one Unit 4 block to make one side strip. Repeat to make twenty-four side strips total.
- Sew one side strip to each side of one Unit 1 block. Sew one Unit 2 block to each end of one side strip. Repeat to make a second strip. Sew the strips to the top and to the bottom of the Unit 1 block to make one Block One (Fig. 5). Repeat to make six Block Ones total.
- Sew one 1" x 5 1/2" Fabric I strip to each side of one 5 1/2" Fabric A square. Sew one 1" x 6 1/2" Fabric I strip to the top and to the bottom of the Fabric A square to make one Unit 5 block (Fig. 6). Repeat to make six Unit 5 blocks total.



8. Sew one Fabric J triangle, one Fabric G triangle and one Fabric D triangle together to make one Unit 6 block (Fig. 7). Repeat to make twenty-four Unit 6 blocks.
9. Sew one Fabric D triangle, one Fabric G triangle and one Fabric J triangle together to make one Unit 7 block (Fig. 8). Repeat to make twenty-four Unit 7 blocks.



10. Sew one Unit 6 block to the left side of one Unit 7 block to make one side strip. Repeat to make twenty-four side strips total.
11. Sew one side strip to each side of one Unit 5 block. Sew one Unit 2 block to each end of one side strip. Repeat to make a second strip. Sew the strips to the top and to the bottom of the Unit 5 block to make one Block Two (Fig. 9). Repeat to make six Block Twos total.

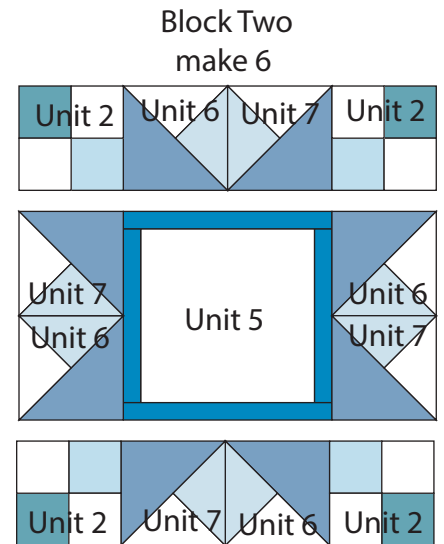


Fig. 9

Quilt Top Assembly

(Follow Quilt Layout while assembling the quilt top.)

12. Sew one Block One to each side of one Block Two to make Row One. Repeat to make Row Three.
13. Sew one Block Two to each side of one Block One to make Row Two. Repeat to make Row Four.
14. Sew the four rows together in numerical order to make the Center Block.
15. Sew one 2" x 48 1/2" Fabric K strip to each side of the Center Block. Sew one 2" x 39 1/2" Fabric K strip to the top and to the bottom of the Center Block.
16. Sew one 1 1/2" x 51 1/2" Fabric B strip to each side of the Center Block. Sew one 1 1/2" x 41 1/2" Fabric B strip to the top and to the bottom of the Center Block.
17. Center one 5 1/2" x 67" Fabric H strip on one side of the Center Block and pin in place. Start sewing the strip a 1/4" from the top edge of the block and stop a 1/4" from the bottom edge. **DO NOT TRIM THE EXCESS.** Repeat with the opposite side.
18. Repeat Step 17 to sew one 5 1/2" x 55" Fabric H strip to the top and to the bottom of the Center Block, making sure to stop and start 1/4" away from each end of the block. To miter each corner, fold the Center Block on a diagonal, wrong side together. This should line up the strips from adjacent sides (Fig. 10).
19. Starting at the sewn seam (represented by the arrow in Figure 10), draw a 45-degree line to the edge of the fabric. Sew on the drawn line. Trim the excess fabric leaving a 1/4" seam. Repeat this step with the remaining corners to make the quilt top.

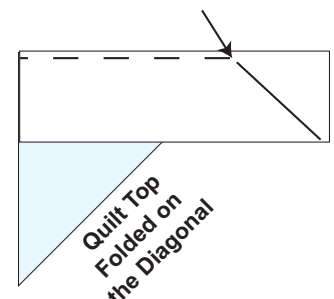
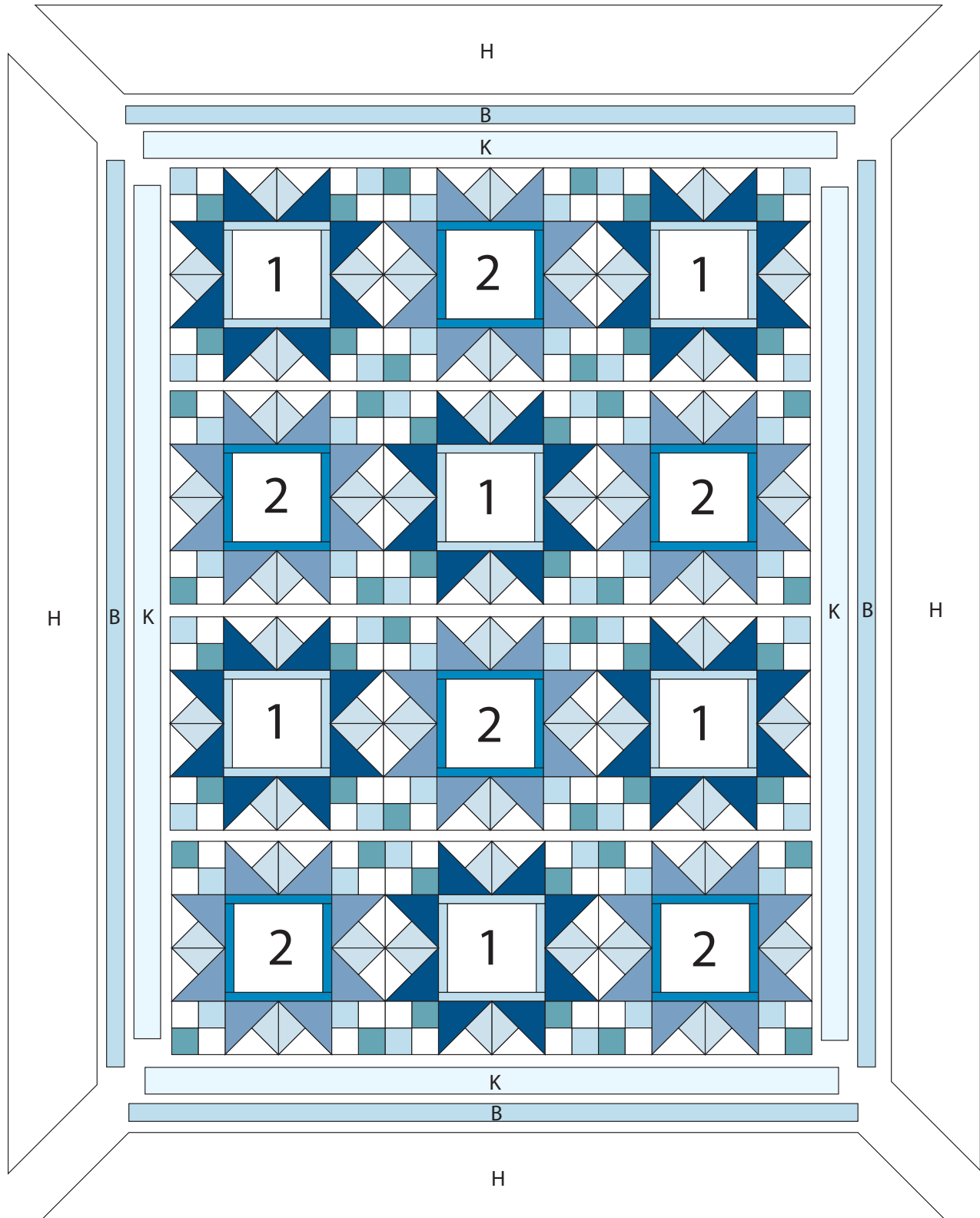


Fig. 10

20. Layer and quilt as desired.
21. Sew the six 2 1/2" x WOF Fabric I strips together, end-to-end with 45-degree seams, to make the binding. Fold this long strip in half lengthwise with wrong sides together and press
22. Bind as desired.



Quilt Layout