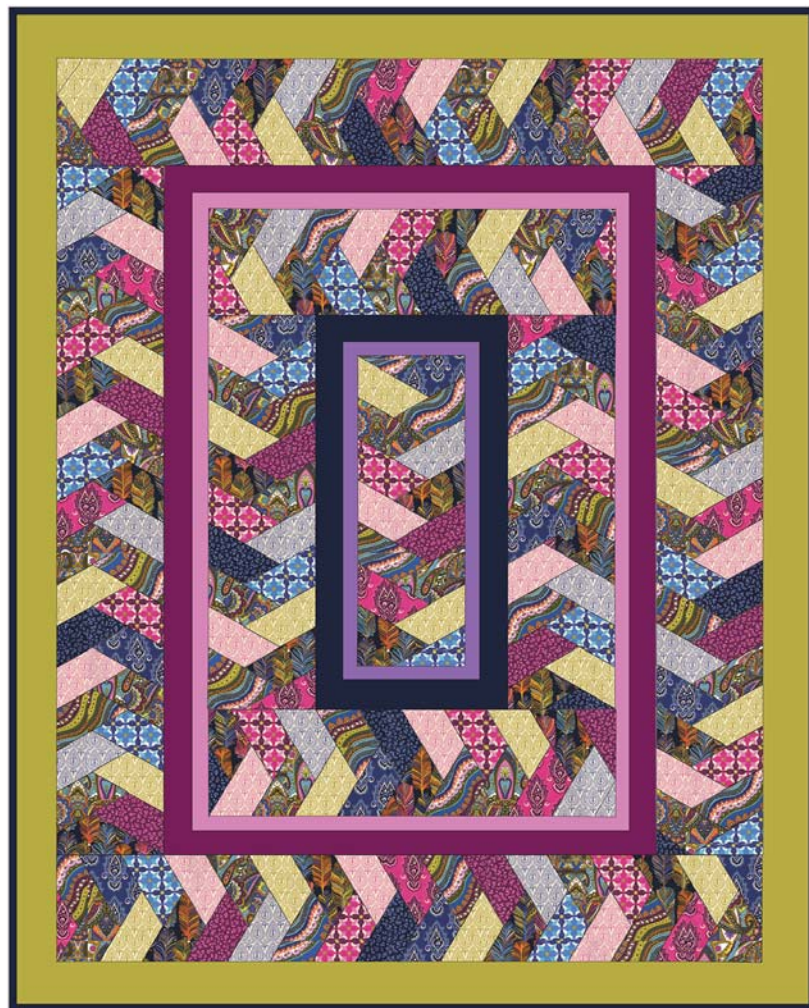


Braided Rug

58" x 68"

EACH KIT CONTAINS:

- 1/3 yard each of the following-
- CX7440 Patch-ouli- Jewel
 - CX7441 Gypsy Heart- Jewel
 - CX7442 Catching Dreams- Jewel
 - CX7443 Gypsy Stripe- Jewel
 - CX7444 Lotus Flower- Magenta
 - CX7444 Lotus Flower- Sapphire
 - CX7445 Ginger Blossom- Quartz
 - CX7445 Ginger Blossom- Sapphire
 - CX7445 Ginger Blossom- Topaz
 - CX7446 Jasmine- Garnet
 - CX7446 Jasmine- Sapphire
 - CX7447 Tea Flower- Magenta
 - SC7447 Tea Flower- Sapphire
- 1/2 yard each of the following-
- SC5333 Grape
 - SC5333 Berry
 - SC5333 Jewel
- 1 yd each of the following-
- SC5333- Ink
 - SC5333- Moss



SKU	# of bolts for 12 kits	# of bolts for 24 kits
CX7440 Patch-ouli- Jewel	1	1
CX7441 Gypsy Heart- Jewel	1	1
CX7442 Catching Dreams- Jewel	1	1
CX7443 Gypsy Stripe- Jewel	1	1
CX7444 Lotus Flower- Magenta	1	1
CX7444 Lotus Flower- Sapphire	1	1
CX7445 Ginger Blossom- Quartz	1	1
CX7445 Ginger Blossom- Sapphire	1	1
CX7445 Ginger Blossom- Topaz	1	1
CX7446 Jasmine- Garnet	1	1
CX7446 Jasmine- Sapphire	1	1
CX7447 Tea Flower- Magenta	1	1
CX7447 Tea Flower- Sapphire	1	1
SC5333 Grape	1	1
SC5333 Berry	1	1
SC5333 Jewel	1	1
SC5333- Ink	1	2
SC5333- Moss	1	2
Total # of Bolts	18	20

*Additional Fabric: 4 yards backing per kit



ORDER FABRIC FROM:
 Michael Miller Fabrics
 212-704-0774
www.michaelmillerfabrics.com

"BRAIDED RUG"

Quilt by Emily Herrick

Size: Approximately 58" W x 68 H" Skill Level : Confident Beginner

Materials

Fabric	Yardage	Cutting
CX7440 Patchouli- Jewel	1/3 Yard	(4) 3" x WOF; subcut into (20) 3 " x 7 1/2" Total: (260) 3" x 7 1/2"
CX7441 Gypsy Heart- Jewel		
CX7442 Catching Dreams- Jewel		
CX7443 Gypsy Stripe- Jewel		
CX7444 Lotus Flower- Magenta		
CX7444 Lotus Flower- Sapphire		
CX7445 Ginger Blossom- Quartz		
CX7445 Ginger Blossom- Sapphire		
CX7445 Ginger Blossom- Topaz		
CX7446 Jasmine- Garnet		
CX7446 Jasmine- Sapphire		
CX7447 Tea Flower- Magenta		
SC7447 Tea Flower- Sapphire		
SC5333 Grape	1/8 Yard	(4) 1 3/4" x WOF for border 1 subcut and piece as needed to: (2) 1 3/4" x 24 1/2" and (2) 1 3/4" x 10 1/2"
SC5333- Ink	1 Yard	(12) 2 1/2" x WOF for border 2 and binding subcut and piece as needed to: (2) 2 1/2" x 27" x (2) 2 1/2" x 14 1/2" (8) 2 1/2" x WOF for Binding
SC5333 Peony	1/4 Yard	(5) 1 3/4" x WOF for border 3 subcut and piece as needed to: (2) 1 3/4" x 46" and (2) 1 3/4" x 32"
SC5333 Berry	1/2 Yard	(5) 2 1/2" x WOF for border 4 subcut and piece as needed to: (2) 2 1/2" x 48 1/2" and (2) 2 1/2" x 36"
SC5333- Moss	1 Yard	(7) 3 1/2" x WOF for border 5 subcut and piece as needed to: (2) 3 1/2" x 67 1/2" and (2) 3 1/2" x 57"
Also Needed:		
64 x 74" backing, 64" x 74" batting, threads to match, scissors, straight pins, rotary cutter, acrylic ruler.		

Disclaimers

This pattern is provided as a courtesy to quilt stores, catalogs, and quilters. Michael Miller Fabrics, LLC is not responsible for the accuracy of any kits packaged to accompany this pattern. Please direct any inquiries to the kit maker.

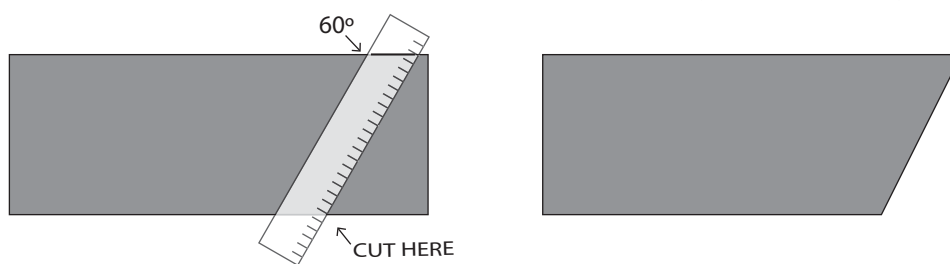
Yardage requirements for this pattern may allow for excess yardage to accommodate specific placement of motifs or to allow for any fussy-cutting to achieve the finished quilt design.

While every attempt has been made to give accurate measurements, yardage requirements, and construction directions; this does not allow personal variations in measuring, cutting, and or sewing. The enclosed directions were used in the construction of the original quilt.

Directions

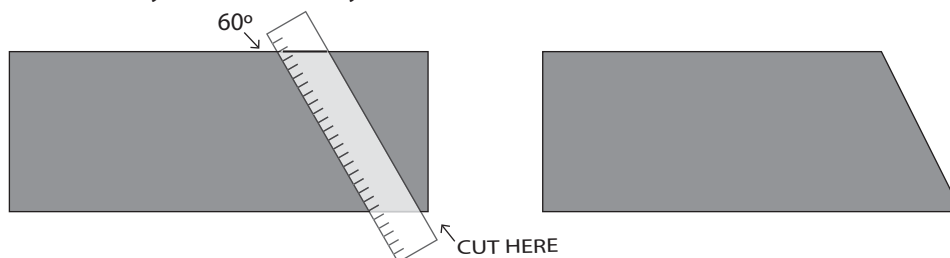
Use 1/4" seam allowance and press all seams toward the darker fabric unless otherwise directed

1. Divide the 3" x 7 1/2" assorted fabric pieces into 2 stacks with even amounts of each print in each stack.
2. Lay a 3" x 7 1/2" fabric strip horizontally on your cutting mat. Align the 60° mark of your ruler with the top edge of the fabric close to the upper right hand corner as shown. Hold your ruler firmly and cut.



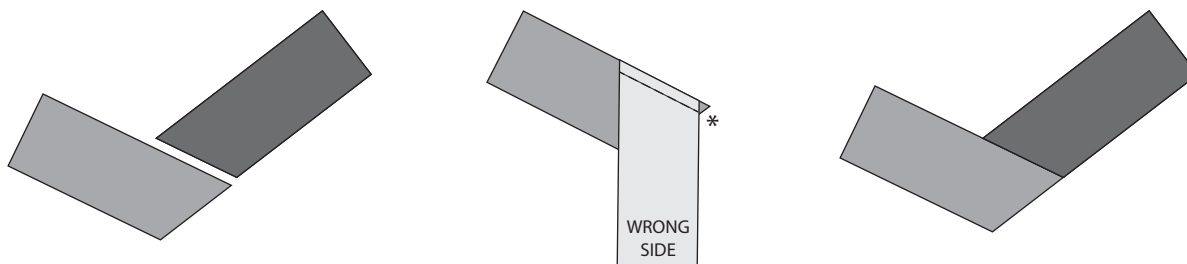
3. Cut all the pieces in the first stack this way. These will be piece 1.

4. Lay a 3" x 7 1/2" fabric strip from the second stack horizontally on your cutting mat. Align the 60° mark of your ruler with the top edge of the fabric so the BOTTOM edge of the ruler is close to the bottom right hand corner as shown below. Hold your ruler firmly and cut.

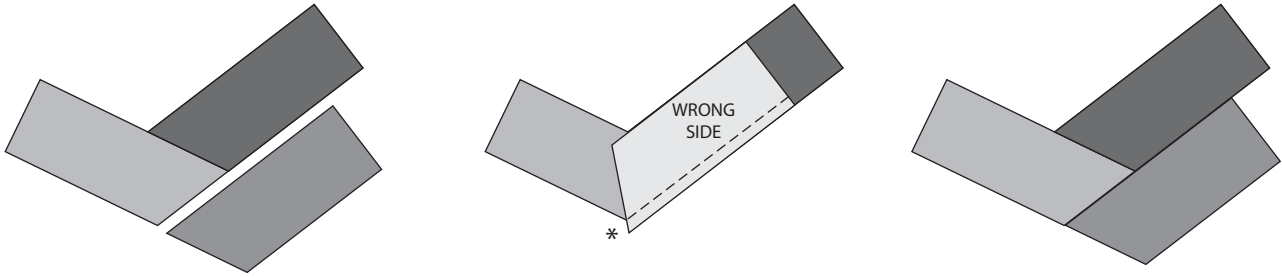


5. Cut all the pieces in the second stack this way. These will be piece 2.

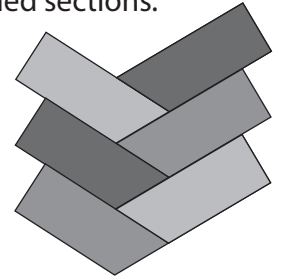
6. Begin with 2 strips, one from each stack, each with different colors/prints. Align the cut edge of piece 2 with the long straight edge of piece 1. Turn piece 2 so that it is right-sides-together with piece 1 and stitch together. Be sure to offset the pieces by 1/4" so that when stitched the edges will line up.



7. Choose another piece 2 and align as shown. Flip the newest piece so that it is RST on the existing braid. Offset the seam by 1/4" and stitch in place.



8. Continue adding strips in this alternating between pieces 1 and 2 in this manner to create a pieced section of fabric resembling a braid. Refer to the Quilt Assembly Diagram for lengths of braided sections.



9. Press braided sections well using starch to minimize stretching. Cut braided section to the length needed as labeled in the Quilt Assembly Diagram. Trim each braided section to 8" wide before adding to quilt top.

10. Begin with the center of the quilt; a braided section 8" wide and 24 1/2" in length.

11. Add border 1, sides first, then top and bottom. Press toward border strips.

12. Next, add border 2 in the same manner; sides first, then top and bottom. Press toward border.

13. Resume adding pieces to the braided section until the needed length for the next part of the quilt is reached. Trim to length and square sides to 8" wide.

14. Attach braided sections to the quilt top, sides first, then top and bottom.

15. Add strips for border 3, sides first then top and bottom.

16. Next add strips for border 4.

17. Continue adding to the braid until the needed length for the next part of the quilt is reached. Trim to length and square sides to 8" wide.

18. Add the remaining strips for border 5.

19. Layer backing, batting and quilt top. Baste.

20. Quilt as desired.

21. Join binding strips together end-to-end, fold in half lengthwise. Bind.

QUILT ASSEMBLY DIAGRAM

