

ROARRR! QUILT

michael | miller FABRICS

FEATURING THE WILD THINGS COLLECTION



SIZE: 40" x 55" | CONFIDENT BEGINNER TO INTERMEDIATE LEVEL | QUILT DESIGNED BY MARINDA STEWART

FABRIC REQUIREMENTS

BACKING: 45" X 60"

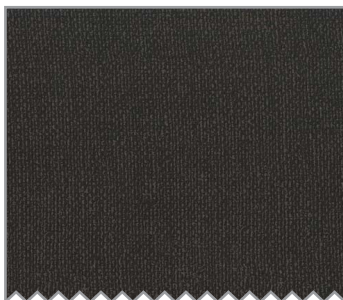
BATTING: 45" X 60"



CX7015 Creme

Roarr!

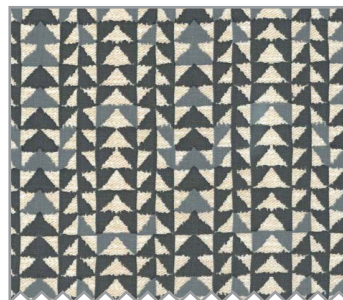
1 yard



CX6898 Charcoal

Bark Cloth

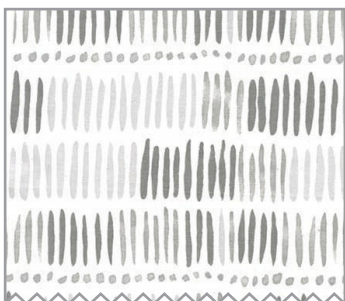
1/2 yard



CX7032 Graphite

I Wove Your

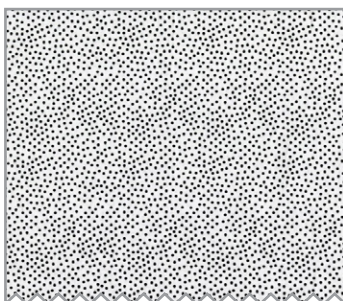
3/8 yard



DC7097 Stone

Tall Grass

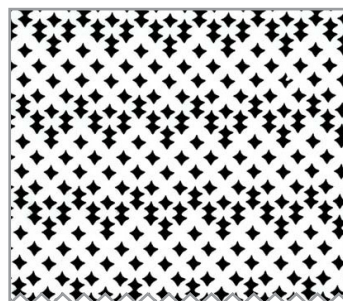
1/4 yard



CX1065 Dalmatian

Garden Pindot

3/8 yard



DC6210 Black

North Star

1/4 yard



SC5333 Black

Cotton Couture

3/8 yard



SC5333 Clay

Cotton Couture

3/8 yard



SC5333 Dirt

Cotton Couture

3/8 yard



SC5333 Honey

Cotton Couture

5/8 yard



SC5333 Soft White

Cotton Couture

1/2 yard



SC5333 Taupe

Cotton Couture

1/2 yard

Roarr!

Size: 40" x 55"

Skill Level: Confident Beginner to Intermediate

Designed by Marinda Stewart

FABRICS	YARDAGE	CUTTING
CX7015 Cream Roarr!	1 yard	(1) 4" x 35 ½" cut vertically * (1) 5 ½" x 21 ½" * (1) 5 ½" x 15 ½" * (3) 7 ½" squares * (4) 4 ½" squares (cut on point) (2) 4 ½" W x 5 ½" H *
CX6898 Charcoal Bark Cloth	1/2 yard	(14) 3 ½ squares (16) 3" squares (1) 2 ½" x 10 ½" (1) 2" x 15 ½" (1) 1 ¼" x 15 ¼" (1) 1 ½" x 15 ½" (1) 1" x 35 ½"
CX7032 Graphite I Wove You	1/2 yard	(2) 2 ½" x 20 ½" (1) 3 ¼" x 15 ½" (1) 3 ½" x 32 ½" (12) 2 ½" squares
DC7097 Grey Tall Grass	1/4 yard	(1) 4 ½" x 20 ½" (1) 2 ¼" x 15 ½" (1) 5 ½" x 20 ½" (1) 2 ½" x 15 ½"
CX1065 Dalmatian Garden Pindot	3/8 yard	(7) 3 ½" x 6 ½" (3) 3" x 5 ½" (1) 2 ¼" x 15 ½" (1) 2" x 32 ½" (10) random triangles Cut freehand
DC6210 Black North Star	1/4 yard	(4) 3" x 5 ½" (3) 3 ½" x 6 ½" (1) 1 ½" x 15 ½"
SC5333 Soft White Cotton Couture	1/2 yard	(1) 12" x 14" (4) 1 ½" x W.O.F. (1) ¾" x 15 ½" (11) ¾" x 1 ¾" Handcut ovals

SC5333 Black Cotton Couture	3/8 yard	(5) 2 ½" x W.O.F. – binding
SC5333 Clay Cotton Couture	3/8 yard	(3) 4" squares (1) 4 ½" x 15 ½" (1) 1 ½" x 15 ½" (1) 2" x 10 ½" (1) 2" x 15 ½" (4) 1 ½" x W.O.F.
SC5333 Dirt Cotton Couture	3/8 yard	(2) 1 ½" x 21 ½" (1) 2" x 32 ½" (3) 4" squares (4) 1 ¾" x W.O.F. (1) 1 ½" x 12 ½"
SC5333 Honey Cotton Couture	5/8 yard	(1) 1 ½" x 15 ½" (1) 1 ½" x 32 ½" (3) 4" squares (4) 1 ½" x W.O.F. (4) 1 ¾" x W.O.F. (2) 1 ½" x 4 ½"
SC5333 Taupe Cotton Couture	1/2 yard	(3) 4 squares (1) 1 ½" x 5 ½" (1) 1 ½" x 15 ½" (4) 2 ½" x W.O.F. (1) 1 ½" x 12 ½"
SC5333 Khaki Cotton Couture	Fat 1/8	(6) 2 ½" x 4 ½"
* Center on motif		
ALSO NEEDED: 45" X 60" backing, 45" x 60" batting, threads to match, scissors, straight pins, rotary cutter, acrylic ruler, and mat		

NOTE: This quilt has several non-traditional improvisational elements in it used to create the rustic collage style quilt.

DIRECTIONS:

1. Sew one CX6898 1" x 35 ½" piece to the right side of CX7015 4" x 35 ½" strip. Keep motifs upright. Set aside.
2. To make the triangle strip – randomly cut (10) triangles 2 ½" high from scraps of CX1065. Using SC5333 Honey 1 ¾" x W.O.F. sew Honey to one side of one triangle. Trim fabric to maintain the triangle. Repeat for side #2 of the triangle and side #3 of the triangle. One row of the triangle log cabin block has been made. Repeat for the remaining (9) triangles. Next randomly trim each side of the honey "logs" unevenly to make a "wonky" lopsided triangle. Repeat this process using SC5333 Dirt on (5) blocks and SC5333 Taupe on the other (5). Do not trim round 2 until the

triangles are assembled. Alternate dirt and taupe triangles as shown. Randomly trim the outer round of each as needed to make a continuous straight row. The edges will be irregular. Trim completed row to measure 7 ½" x 35 ½". Sew to the right side of the CX6898. Set unit aside.

3. Sew one CX7032 2 ½" x 20 ½" piece to each side of one DC7097 4 ½" x 20 ½" piece. Set aside.
4. To make the square within a square lion's head block – place one SC5333 4" dirt square in the upper left corner of one CX7015 7 ½" square with right sides together. Sew diagonally from the lower left corner of the 4" square to the upper right corner. Press open. Trim excess fabric from the back. Repeat for each corner using SC5333 Honey, Taupe, and Clay. Make (3) blocks total. Sew together to make (1) 7 ½" x 21 ½" strip as shown. Set aside.
5. To make (1) flying geese unit – place one CX6898 3 ½" square on top of one CX1065 3 ½" x 5 ½" piece. Sew diagonally from lower corner to upper corner as in step #4. Press. Trim away excess. Repeat for the opposite corner, sewing from the top inside to the lower outside corner. Make (4) geese units using CX1065 and (3) geese units using DC6210 3 ½" x 6 ½" pieces. Sew together in a strip alternating CX1065 and DC6210 blocks to make (1) 6 ½" x 21 ½" piece. Sew to the bottom of the lion's head strip. Set aside.
6. Sew one SC5333 dirt 1 ½" x 21 ½" strip to the top and bottom of one CX7015 5 ½" x 21 ½" piece. Sew to the bottom of the flying geese strip.
7. Sew completed geese and lion's head unit to the right side of the piece from step #3. Set aside.
8. Sew together in the following order from the top down: SC5333 clay 1 ½" x 15 ½", CX6898 1 ¼" x 15 ½", DC6210 1 ½" x 15 ½", SC5333 taupe 2 ¼" x 15 ½", DC7097 2 ¼" x 15 ½", SC5333 clay 4 ½" x 15 ½", CX1065 2 ½" x 15 ½" and CX7032 3 ¼" x 15 ½". Machine applique SC5333 soft white 1 ¼" x 15 ½" strip in the center of the 4 ½" clay piece. Black thread was used to stitch over the raw edges of the strip. Machine applique 11 free hand cut ovals (3/4" x 1 ¾") scattered over the white strip as shown using black thread.
9. To make (1) flying geese unit use (1) SC5333 khaki 2 ½" x 4 ½" piece and (2) CX7032 2 ½" squares. Follow the directions in step #5. Make (6) total. Sew three together into 1 strip. Make 2 flying geese units.
10. Sew one SC5333 honey 1 ½" x 4 ½" piece to the top of once CX7015 4 ½" x 5 ½" lion's head. Sew one flying unit to the bottom of CX7015. Set aside. Sew one flying geese unit to the top of CX7015 lion's head. Sew one SC5333 honey to the bottom of CX7015. Set aside.
11. Sew together one SC5333 dirt 1 ½" x 12 ½" piece and one SC5333 taupe 1 ½" x 12 ½" piece. Sew one flying geese unit with the lion's head on top to the left side of the strip and the remaining lion's head unit to the right side. Sew one SC5333 clay 2" x 10 ½" piece to the top. Sew one CX6898 2" x 10 ½" piece to the bottom. Sew one CX6898 2" x 15 ½" to the left side. Sew one SC5333 clay 2" x 15 ½" to the right side. Sew one SC5333 honey 1 ½" x 15 ½" to the right side.
12. Sew lion's head unit to the left side of the striped unit from step #8.

13. Sew the lion's head /striped unit (15 ½" x 29 ½") to the bottom of the lion's head / flying geese unit (20" x 29 ½") unit from step 6. Sew this completed unit to the right side of the 11 ½" x 35 ½" triangle unit from step #3 for the top half of the quilt. Set aside.
14. For the bottom half of the quilt - Make a flying geese strip 5 ½" x 20 ½" using CX1065 3" x 5 ½" piece, DC6210 3" x 5 ½" pieces, and (16) CX6848 3" squares following the directions in step #5. Alternate the fabric placement. Set aside.
15. Sew one SC5333 taupe 1 ½" x 5 ½" piece to the left side of one CX7015 5 ½" x 15 ½" piece. Sew one DC7097 5 ½" x 20 ½" piece to the left side of SC5333 taupe to make one piece 5 ½" x 35 ½". Set aside.
16. Sew together in the following order top to bottom one SC5333 1 ½" x 32 ½" honey, one CX1065 2" x 32 ½" x and one SC5333 dirt 2" x 32 ½". Set aside.
17. To make the lion's head blocks – Sew SC5333 clay 1 ½" x W.O.F. strips to opposite sides of one CX7015 4 ½" lion's square cut on point. Trim SC5333 clay to fit. Sew SC5333 clay to the two remaining sides. Repeat for all four blocks. Trim edges of SC5333 clay randomly on all four sides as in step #2. For round #2 use SC5333 honey. Repeat the trimming. Use SC5333 soft white for round #3. Repeat trimming. Use SC5333 taupe 2 ½" x W.O.F. strips for round #4. Trim each block to 8 ½" square. Sew the four blocks together to make (1) 8 ½" x 32 ½" strip. Sew to the bottom of the unit from step #16.
18. Sew CX7032 3 ½" x 32 ½" piece to the bottom of the (4) lion blocks. Set aside.
19. Sew one CX6898 1 ½" x 15 ½" piece to the left side of DC7097 2 ½" x 15 ½" piece. Sew unit to the right side of the lion's head unit.
20. Sew completed unit to the bottom of the 5 ½" x 35 ½" pieced strip.
21. Sew 5 ½" x 20 ½" flying geese unit to the left side of the bottom half of the quilt.
22. Join bottom of the quilt to the top of the quilt as shown.
23. Layer backing, batting, and quilt top. Baste.
24. Quilt as desired.
25. Bind quilt using SC5333 black 2 ½" strips pieced as needed for length.