

# WISE OWLS COLLAGE

michael | miller FABRICS

FEATURING THE WILD THINGS COLLECTION



SIZE: 41" X 53" | SKILL LEVEL: CONFIDENT BEGINNER TO INTERMEDIATE | QUILT DESIGNED BY MARINDA STEWART



# FABRIC REQUIREMENTS

45" X 60" BACKING & BATTING



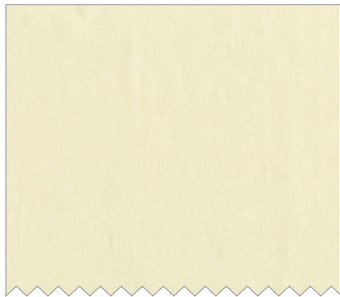
CX7016 Creme  
Whoo's There?  
1/4 yard



CJ 4816 Brown  
Painter's Canvas  
1/4 yard



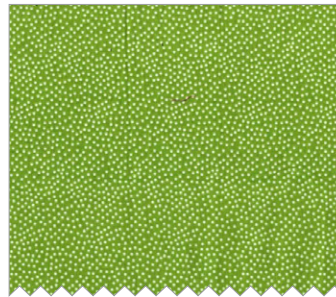
K1024 (Gold)  
Krystal  
1/4 yard



SC5333 Creme  
Cotton Couture  
1/2 yard



K1156 (Avocado)  
Krystal  
1/6 yard



CX1065 Apple  
Garden Pindot  
1/6 yard



CJ4816 Sand  
Painter's Canvas  
1/4 yard



CJ4816 Orange  
Painter's Canvas  
1/4 yard



SC5333 Pumpkin  
Cotton Couture  
Fat 1/8



SC5333 Melon  
Cotton Couture  
1/6 yard



K1024 (Moss)  
Krystal  
1/2 yard



CJ4816 Bottle  
Painter's Canvas  
8" x 8" piece



CX7273 Forest  
Wise Owl Collage  
1 yard

Wise Owl Collage

Size: 41" x 53"

Skill Level: Confident Beginner to Intermediate

Designed by Marinda Stewart

FABRICS	YARDAGE	CUTTING
CX7273 Forest Wise Owl Collage	1 yard	(4) 6 ½" x 8 ½" – fussy cut * (2) 6 ½" x 35 ½"
CX7016 Cream Whoo's There	1/4 yard **	(4) 3 ¼" x 16 ½" *
CJ4816 Brown Painter's Canvas	1/4 yard	(8) 2" x 16 ½"
K1024 (Gold) Krystal	1/4 yard	(8) 2" x 16 ½" (12) 1/4 circles ***
SC5333 Cream Cotton Couture	1/2 yard	(4) 3 ½" x 16 ½" (12) 2" x 6 ½" (24) 1 ½" squares (24) 2" squares (12) 2 ¾" squares *** (12) 1 ¼" x 2 ¾" *** (12) 1 ¼" x 3 ½"
K1156 (Avocado) Krystal	1/6 yard	(4) 1 ½" x 9 ½" (4) 1 ½" x 12 ½" (4) ½ leaves ***
CX1065 Apple Garden Pindot	1/6 yard	(4) 1 ½" x 8 ½" (4) 1 ½" x 11 ½" (4) ½ leaves ***
CJ4816 Sand Painter's Canvas	1/4 yard	(4) 1 ¾" x 16 ½" (12) 2" x 6 ½"
CJ4816 Orange Painter's Canvas	1/4 yard	(4) 1 ½" x 7 ½" (4) 1 ½" x 10 ½" (16) 1 ½" squares
SC5333 Pumpkin Cotton Couture	Fat 1/8	(17) 1 ½" squares
SC5333 Melon Cotton Couture	1/6 yard	(32) 2" squares (4) 1 ½" x 6 ½" (4) 1 ½" x 9 ½"
K4151 (Moss) Krystal	1/2 yard	(5) 2 ½" x W.O.F. – binding (4) ½ leaves ***
CJ4816 Bottle Painter's Canvas	8" x 8" piece	(4) ½ leaves ***
* Center on motif as shown ** Or amount needed for (2) complete rows of owls *** See pattern		
<b>ALSO NEEDED:</b> 45" X 60" backing, 45" x 60" batting, threads to match including dark green and brown, scissors, straight pins, rotary cutter, acrylic ruler, and mat.		

This quilt consists of (4) 16" compound blocks with borders. Directions for (1) block will be given.

**DIRECTIONS:**

1. To make one maple leaf block – Place one 2" melon square right sides together on top of one 2" cream square. Draw a diagonal line from corner to corner. Sew  $\frac{1}{4}$ " on each side of the line. Cut apart on the drawn line. Press open. Yield = (2) half square triangle (HST) blocks. Trim each to an accurate  $1\frac{1}{2}$ " square. Make (48) HST units total. For row #1 sew together (2) HST and (1)  $1\frac{1}{2}$ " cream square. For row #2 – sew together (1) CJ4816 Orange  $1\frac{1}{2}$ " square, one SC5333 Pumpkin  $1\frac{1}{2}$ " square and (1) HST as shown. Row #3 – sew together (1)  $1\frac{1}{2}$ " cream square, (1) CJ4816 Orange  $1\frac{1}{2}$ " square and one HST square. Sew together the rows to make one  $3\frac{1}{2}$ " square block. Machine satin stitch the leaf stem in place as shown. Make (12) blocks. Set aside.
2. To make (1) ginkgo leaf block – Insert (1) K1024  $\frac{1}{4}$  circle into the companion SC5333 cream  $2\frac{3}{4}$ " piece (use pattern piece for the arc-shaped background). Ease fullness into the curve. Chip curved seam if needed. Sew one SC5333 cream  $1\frac{1}{4}$ " x  $2\frac{3}{4}$ " piece to one side as shown. Sew one SC5333 cream  $1\frac{1}{4}$ " x  $3\frac{1}{2}$ " piece to the bottom as shown. Machine satin stitch stem in place. Make (12) blocks total. Set aside.
3. For (1) 3" x 6" leaf block – sew (1)  $\frac{1}{2}$  leaf piece (CX1065, K4151) into (1) SC5333 cream  $2$ " x  $6\frac{1}{2}$ " piece with the arc. (see pattern) Repeat using  $\frac{1}{2}$  leaf (K1156, CJ4816 bottle) and CJ4816 sand  $2$ " x  $6\frac{1}{2}$ " piece. Sew one light  $\frac{1}{2}$  leaf together with one dark  $\frac{1}{2}$  leaf to make (1)  $3\frac{1}{2}$ " x  $6\frac{1}{2}$ " block. Make (12) mixed leaf blocks total. Set aside.
4. Sew one SC5333 melon  $1\frac{1}{2}$ " x  $6\frac{1}{2}$ " piece to the top of each CX7273  $6\frac{1}{2}$ " x  $8\frac{1}{2}$ " piece. Sew one SC5333 melon  $1\frac{1}{2}$ " x  $9\frac{1}{2}$ " piece to the right side. Sew one CJ4816 orange  $1\frac{1}{2}$ " x  $7\frac{1}{2}$ " piece to the bottom. Sew one CJ4816 orange  $1\frac{1}{2}$ " x  $10\frac{1}{2}$ " piece to the left side. Sew one CX1065  $1\frac{1}{2}$ " x  $8\frac{1}{2}$ " piece to the top of the block. Sew one CX1065  $1\frac{1}{2}$ " x  $11\frac{1}{2}$ " piece to the right side. Sew one K1156  $1\frac{1}{2}$ " x  $9\frac{1}{2}$ " piece to the bottom. Sew one K1156  $1\frac{1}{2}$ " x  $12\frac{1}{2}$ " piece to the left side. Make (4) blocks total. Set aside.
5. Sew together one maple leaf and one ginkgo leaf as shown. Add one green leaf to the sides to make (1)  $6\frac{1}{2}$ " square. Make (8) total. Sew together two  $6\frac{1}{2}$ " blocks in alternating directions as shown. Make (4) units total.
6. Sew one (2) block unit to the right side of one owl block. Sew one CX7016  $3\frac{1}{4}$ " x  $16\frac{1}{2}$ " piece to the bottom. Add one CJ4816 sand  $1\frac{3}{4}$ " x  $16\frac{1}{2}$ " piece to make (4) blocks total. Set aside.

7. For SC5333 cream 3 ½" x 16 ½" sashing pieces. Place one SC5333 melon 2" square right sides together on top of one corner. Stitch diagonally across the corners of the 2" square. Press open. Trim away excess from the back. Repeat for the other corner. Set aside.
8. For center square, sew together (5) SC5333 pumpkin 1 ½" squares and (4) CJ4816 orange 1 ½" squares into a 3 ½" square checkerboard 9-patch block. Set aside.
9. Sew together (1) CJ4816 brown 2" x 16 ½" piece with (1) K1024 2" x 16 ½" piece. Make (8) total. Set aside.
10. To assemble the quilt from the top down sew together the following:
 

Row #1: (1) 3 ½" x 6 ½" leaf, CX7273 6 ½" x 35 ½" piece, and (1) 3 ½" x 6 ½" leaf.

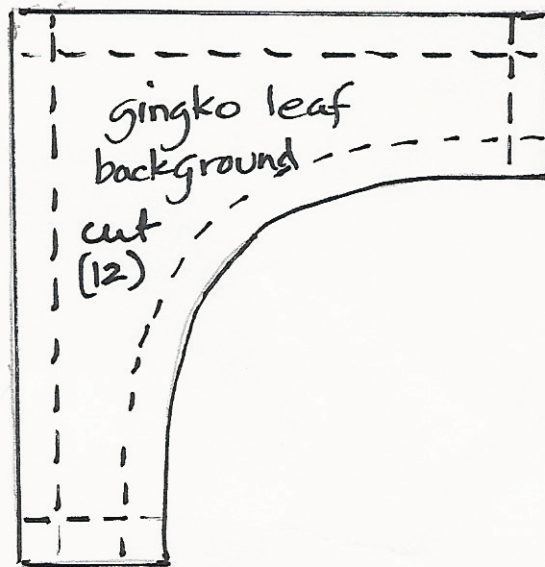
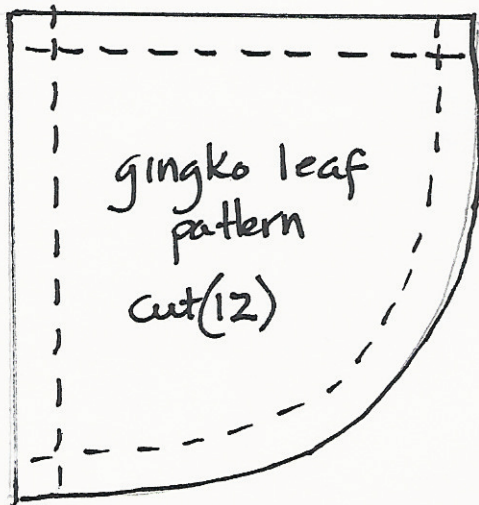
Row #2: (1) maple leaf, (1) 3 ½" x 16 ½" brown and gold strip, (1) ginkgo, (1) brown and gold strip, (1) maple leaf.

Row #3: (1) brown and gold strip, (1) 16 ½" block, (1) SC5333 cream 3 ½" x 16 ½" strip, (1) 16 ½" block, (1) brown and gold piece

Row #4: (1) ginkgo leaf, one SC5333 cream 3 ½" x 16 ½" piece with colored ends to the center, (1) 9-patch block, (1) SC5333 3 ½" x 16 ½" piece with colored ends to the center. End with one ginkgo leaf block.

Repeat row #3. Repeat row #2, repeat row #1.
11. Layer backing batting, and quilt top. Baste.
12. Quilt as desired. NOTE: The center sashing (Cream) has been free motion quilted using dark green thread and a serpentine leaf motif the length of the sashing. Vein details were added to each 3 ½" x 6 ½" leaf block as well.
13. Bind quilt using K4151 2 ½" strips pieced as needed for length.





"Wise Owl Collage"

PATTERNS

