

SERAFINA *Kimono Quilt*

By: Marinda Stewart

Featuring the Serafina Collection



michael|miller FABRICS

SIZE: 50" X 50" | CONFIDENT BEGINNER LEVEL | DESIGNED BY MARINDA STEWART
FREE PATTERN AVAILABLE AT WWW.MICHAELMILLERFABRICS.COM

FABRIC REQUIREMENTS



CX7270 Aubergine
Serafina
3/4 yard



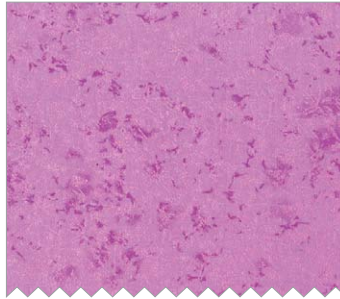
CM0376 Powder Blue
Fairy Frost
1 yard



CX7284 Midnite
Odette
1/4 yard



CX7279 Gray
Fancy
1/4 yard



CM0376 Azalea
Fairy Frost
1/4 yard



CX7278 Aubergine
Angelina
5/8 yard



CM0376 Cabana
Fairy Frost
5/8 yard



CX7280 Hunter
Delicata
1/8 yard



CX7280 Turquoise
Delicata
1/8 yard



K1274 (Magenta)
Krystal
1/8 yard

Serafina Kimono

Designed by Marinda Stewart

Skill Level: Confident Beginner

Size: 50" x 50"

"Serafina Kimono" is the latest addition the Michael Miller Fabrics collection of quilted kimonos. Since 2002, when I designed and made the first one, there have been eight to ten different quilts made using all-over prints, border prints, and printed panels, each one unique and different.

Fabrics	Yardage	Cutting
CX7270 Aubergine Serafina	3/4 yard	(1) 22 1/2" W x 43" H
CM0376 Powder Blue Fairy Frost	1 yard	(2) 14 1/2" x 28" (2) 2 1/2" x 19" (1) 4" x 22 1/2" (1) 4 1/2" x 22 1/2" (2) 4 1/2" x 14 1/2"
CX7284 Midnite Odette	1/4 yard *	(2) 2 3/4" x 19" (2) 2 3/4" x 22 1/2"
CX7279 Gray Fancy	1/4 yard	(2) 4" x 19" (2) 4" x 22 1/2"
CM0376 Azalea Fairy Frost	1/4 yard	(6) 1" x 19" (4) 1" x 22 1/2" (2) 1" x 17"
CX7278 Aubergine Angelina	5/8 yard **	(2) 2 1/2" x 19" (2) 2 1/2" x 22 1/2" (1) 4" x 6 1/2" (collar) (5) 2 1/2" x 4 1/2" (4) 2 1/2" x 3 1/4"
CM0376 Cabana Fairy Frost	5/8 yard	(6) 2 1/2" x W.O.F. – binding (1) 4 1/2" x W.O.F. ***
CX7280 Hunter Delicata	1/8 yard	(1) 4 1/2" x W.O.F. ***
CX7280 Turquoise Delicata	1/8 yard	(1) 4 1/2" x W.O.F. ***
K1274 (Magenta) Krystal	1/8 yard	(1) 4 1/2" x W.O.F. ***
* Or amount needed to get (2) complete motifs. Cut one 19" and one 22 1/2" length from each width of fabric. Center 2 3/4" strip on the motif		
** Strips are cut vertically. Center each strip on a motif.		
*** Cut (8) random width of 4 1/2" pieces varying from 1 1/2", 1 3/4", 2", 2 1/4" in each of the four colors. From the remaining 4 1/2" strip, cut (8) random pieces in the same 1 1/2", 1 3/4", 2", and 2 1/4" widths x 3 1/4" long for the sleeves.		

Directions:

1. Fold CX7278 4" x 6 ½" piece in half lengthwise with folded edge at the top, fold down each corner to the center to make the collar. Press to hold shape.
2. Fold CX7270 22 ½" x 43" piece in half lengthwise. Mark the center. With right sides together pin the collar centered on the top of CX7270. With right sides together, place CM0376 Powder Blue 4 ½" x 22 ½" piece on top. Sew in place. Press collar upward. Repeat for the bottom edge using CM0376 Powder Blue 4" x 22 ½" for the bottom edge. Set aside the center panel of the quilt.
3. For the pieced section of the sleeves, sew together random 3 ¼" pieces of CM0376 Cabana, K1274, CX7280 Hunter, CX7280 Turquoise, and CX7278 to make (2) 3 ¼" x 19" strips.
4. To assemble the left sleeve panel, sew together left to right the following: CM0376 Powder Blue 2 ½" x 19" CX7278 2 ½" x 19", CM0376 Azalea 1" x 19", CX7284 2 ¾" x 19", CM0376 Azalea 1" x 19", 3 ¼" x 19" pieced strip, CM0376 Azalea 1" x 19", and CX7279 4" x 19" to make (1) piece 14 ½" x 19". Make (2) reversing the order for the right sleeve panel.
5. Sew one CM0376 Powder Blue 4 ½" x 14 ½" piece to the top of each sleeve panel. Set aside.
6. For the angled panels – sew together random 4 ½" strips, as in Step #3 to make (2) 4 ½" x 22 ½" strips.
7. To assemble the left side of the kimono, sew together from right to left as follows: CX7279 4" x 22 ½", CM0376 Azalea 1" x 22 ½", 4 ½" x 22 ½" pieced strip, CM0376 Azalea 1" x 22 ½", CX7284 2 ¾" x 22 ½" piece. Draw a diagonal line from the upper left corner to the lower right corner. Add the seam allowance. Trim away the excess. Sew CM0376 Azalea 1" x 17" from the top left edge of the pieced panel to within ¼" of the end of 17". Add CX7278 2 ½" x 17" piece to the left side. Turn under ¼" seam allowance along CX7278 across the bottom of the 17" pieces, continue down the outside of CX7284 and across the bottom of the panel. Place triangular piece in the upper right corner of the CM0376 Powder Blue 14 ½" x 28" piece as shown. The bottom edge of the panel should be approximately 3 ¾" from the bottom of the piece. Pins in place. Topstitch all turned under edges to finish. Remove excess fabric from the back. Sew completed panel to the bottom of the left sleeve panel. Repeat for the right side reversing the order of the strips and the trimming of the panel into a triangle. Sew completed 14 ½" x 28" panel to the bottom of the right sleeve panel.
8. To complete the quilt top – sew the left panel to the left side of the center panel and the right panel to the right side.
9. Layer backing, batting, and quilt top. Baste.
10. Quilt as desired.
11. Bind quilt using CM0376 Cabana 2 ½" strips pieced as needed for length.