

SEEDLING SAFARI QUILT

By: Heidi Pridemore

This quilt was created using the
Seedling II collection by Thomas Paul



michael miller FABRICS

SIZE: 50" H x 59" W | QUILT DESIGNED BY HEIDI PRIDEMORE | SKILL LEVEL: INTERMEDIATE

FREE PATTERN AVAILABLE AT WWW.MICHAELMILLERFABRICS.COM



Fabric Requirements



DC7289-Coral
¾ yard (Block Center)



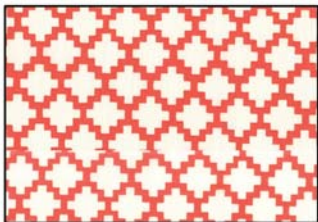
DC7291-Turquoise
¾ yard (Block Center)



DC7293-Coral
½ yard (Diamonds)



DC7293-Slate
½ yard (Diamonds)



DC7292-Coral
½ yard (Diamonds)



DC7290-Slate
1 ½ yards (Borders)



SC5333-Clay
⅞ yard (Block Frames & Binding)



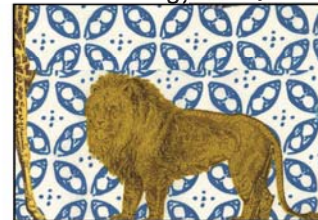
SC5333-Slate
½ yard (Block Frames)



SC5333-White
1 ⅞ yards (Background)



SC5333-Apricot
½ yard (Borders)



DC7289-Azure
3 ½ yards (Backing)

SKU

DC7289-Coral
DC7291-Turquoise.
DC7293-Coral
DC7293-Slate
DC7292-Coral
DC7290-Slate
SC5333-Clay
SC5333-Slate
SC5333-White
SC5333-Apricot
DC7289-Azure

of bolts for 12 Kits

1 bolt (9 yards)
1 bolt (4 ½ yards)
1 bolt (6 yards)
1 bolt (6 yards)
1 bolt (6 yards)
2 bolts (18 yards)
1 bolt (10 ½ yards)
1 bolt (6 yards)
1 bolt (13 ½ yards)
1 bolt (6 yards)
3 bolts (42 yards)

of bolts for 24 Kits

2 bolts (18 yards)
1 bolt (9 yards)
1 bolt (12 yards)
1 bolt (12 yards)
1 bolt (12 yards)
3 bolts (36 yards)
2 bolts (21 yards)
1 bolt (12 yards)
2 bolts (27 yards)
1 bolt (12 yards)
6 bolts (84 yards)

TOTAL BOLTS NEEDED

14 Bolts (11 w/o Back)

21 Bolts (15 w/o Back)

While every effort has been made to make sure these are accurate yardages, please note that these are only estimates until the final pattern is completed and edited. Thank you.

Tel: 212.704.0774

Fax: 212.633.0272

email: info@michaelmillerfabrics.com

www.michaelmillerfabrics.com

"Seedling - Quilt 1"

Quilt by Heidi Pridemore

Size: Approximately 50" x 59" Skill Level: Intermediate

Materials

Cutting instructions

Please Note: All strips are cut across the width of fabric (WOF) from selvage to selvage edge unless otherwise noted.

	Fabric	Yardage	Cutting
(A)	DC7289-Coral Animal Bazaar – Coral	$\frac{3}{4}$ yard	• Cut two 11" x WOF strips. Sub-cut the strips into (5) 8" x 11" strips.
(B)	DC7291-Turquoise Moroc – Turquoise	$\frac{3}{8}$ yard	• Fussy cut four 6 $\frac{1}{2}$ " x 9 $\frac{1}{2}$ " strips, each centered on a diamond.
(C)	DC7293-Coral Block Flower – Coral	$\frac{1}{2}$ yard	• Cut sixteen Template 2 diamonds.
(D)	DC7293-Slate Block Flower – Slate	$\frac{1}{2}$ yard	• Cut sixteen Template 2 diamonds.
(E)	DC7292-Coral Steps – Coral	$\frac{1}{2}$ yard	• Cut sixteen Template 2 diamonds.
(F)	DC7290-Slate Cairo – Slate	1 $\frac{1}{2}$ yards	• Cut two 4 $\frac{1}{2}$ " x 51 $\frac{1}{2}$ " LOF strips. • Cut two 4 $\frac{1}{2}$ " x 50 $\frac{1}{2}$ " WOF strips from the remaining fabric, piece as needed.
(G)	SC5333-Clay Cotton Couture – Clay	$\frac{7}{8}$ yard	• Cut one 9 $\frac{1}{2}$ " x WOF strip. Sub-cut the strip into sixteen 2" x 9 $\frac{1}{2}$ " strips. • Cut six 2 $\frac{1}{2}$ " x WOF strips for the binding.
(H)	SC5333-Slate Cotton Couture – Slate	$\frac{1}{2}$ yard	• Cut one 11" x WOF strip. Sub-cut the strip into ten 1 $\frac{1}{4}$ " x 11" strips and ten 1 $\frac{1}{4}$ " x 9 $\frac{1}{2}$ " strips.
(I)	SC5333-White Cotton Couture – White	1 $\frac{1}{8}$ yards	• Cut ninety-six Template 1 triangles. • Cut ninety-six Template 3 triangles. • Cut one 2" x WOF strip. Sub-cut the strip into eight 2" x 3 $\frac{1}{2}$ " strips.
(J)	SC5333-Apricot Cotton Couture – Apricot	$\frac{1}{2}$ yard	• Cut five 2" x WOF strips. Sew the strips together end to end with diagonal seams and cut two 2" x 48 $\frac{1}{2}$ " strips and two 2" x 42 $\frac{1}{2}$ " strips.
Backing	DC7289-Azure Animal Bazaar – Azure	3 $\frac{1}{2}$ yards	• Cut two 58" x WOF strips. Piece the strips together and trim to make the 58" x 67" pieced backing.

You will also need:

- 58" x 67" batting, threads to match, scissors, straight pins, acrylic ruler, rotary cutter and mat.

Disclaimers

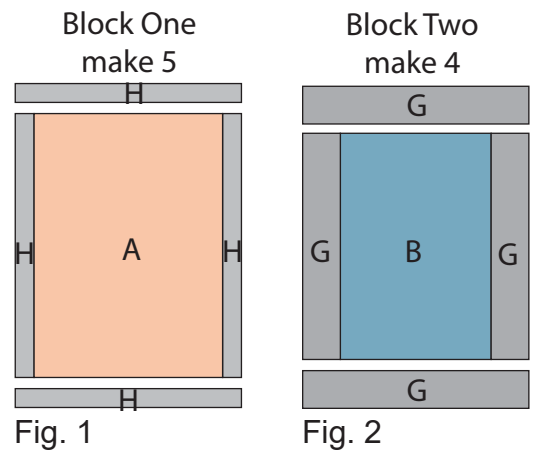
This pattern is provided as a courtesy to quilt stores, catalogs and quilters. Michael Miller Fabrics, LLC is not responsible for the accuracy of any kits packaged to accompany this pattern. Please direct any inquiries to the kit maker.

Yardage requirements for this pattern may allow for excess yardage to accommodate specific placement of motifs or to allow for any fussy-cutting to achieve the finished quilt design.

While every attempt has been made to give accurate measurements, yardage requirements and construction directions; this does not allow personal variations in measuring, cutting or sewing. The enclosed directions were used in the construction of the original quilt.

Block Assembly

1. Sew one $1\frac{1}{4}$ " x 11" Fabric H strip to each side of one 8" x 11" Fabric A strip. Sew one $1\frac{1}{4}$ " x $9\frac{1}{2}$ " Fabric H strip to the top and to the bottom of the Fabric A strip to make one Block One (Fig. 1). Repeat to make five Block Ones total.
2. Sew one 2" x $9\frac{1}{2}$ " Fabric G strip to each side of one $6\frac{1}{2}$ " x $9\frac{1}{2}$ " Fabric B strip. Sew one 2" x $9\frac{1}{2}$ " Fabric G strip to the top and to the bottom of the Fabric B strip to make one Block Two (Fig. 2). Repeat to make four Block Twos total.



3. Place one Fabric I-Template 1 triangle on the top left side of one Fabric C-Template 2 diamond, right sides together, aligning the left sides (Fig. 3). Sew the two components together along the left side. Press the small triangle open.
4. Place one Fabric I-Template 3 triangle on the top right side of the Fabric C-Template 2 diamond, right sides together, aligning the right sides (Fig. 4). Sew the two components together along the right side. Press the small triangle open (Fig. 5).
5. Place one Fabric I-Template 3 triangle on the bottom left side of the Fabric C-Template 2 diamond, right sides together, aligning the left sides (Fig. 6). Sew the two components together along the left side. Press the small triangle open (Fig. 7).

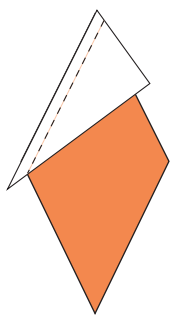


Fig. 3

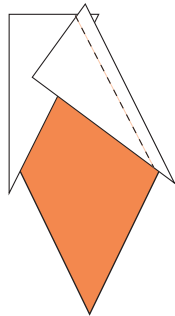


Fig. 4

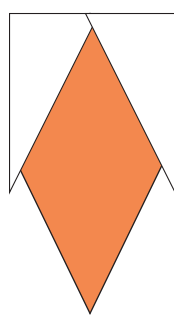


Fig. 5

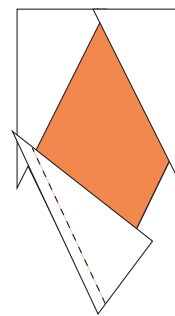


Fig. 6

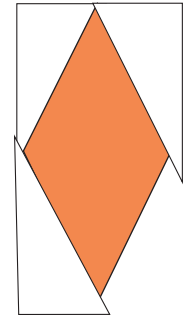


Fig. 7

6. Place one Fabric I-Template 1 triangle on the bottom right side of one Fabric C-Template 2 diamond, right sides together, aligning the right sides (Fig. 8). Sew the two components together along the right side. Press the small triangle open to make one C block (Fig. 9).

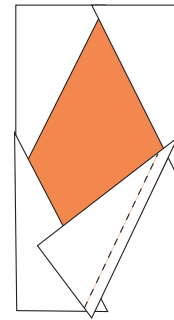


Fig. 8

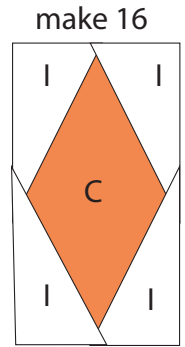


Fig. 9

7. Repeat Steps 3-6 to make sixteen C blocks total.

8. Repeat Steps 3-6 using sixteen Fabric D-Template 2 diamonds, thirty-two Fabric I-Template 1 triangles and thirty-two Fabric I-Template 3 triangles to make sixteen D blocks (Fig. 10).

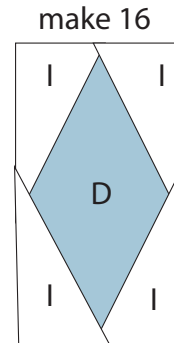


Fig. 10

9. Repeat Steps 3-6 using sixteen Fabric E-Template 2 diamonds, thirty-two Fabric I-Template 1 triangles and thirty-two Fabric I-Template 3 triangles to make sixteen E blocks (Fig. 11).

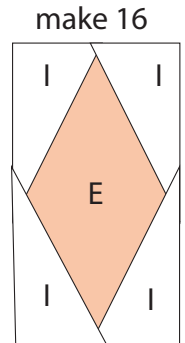
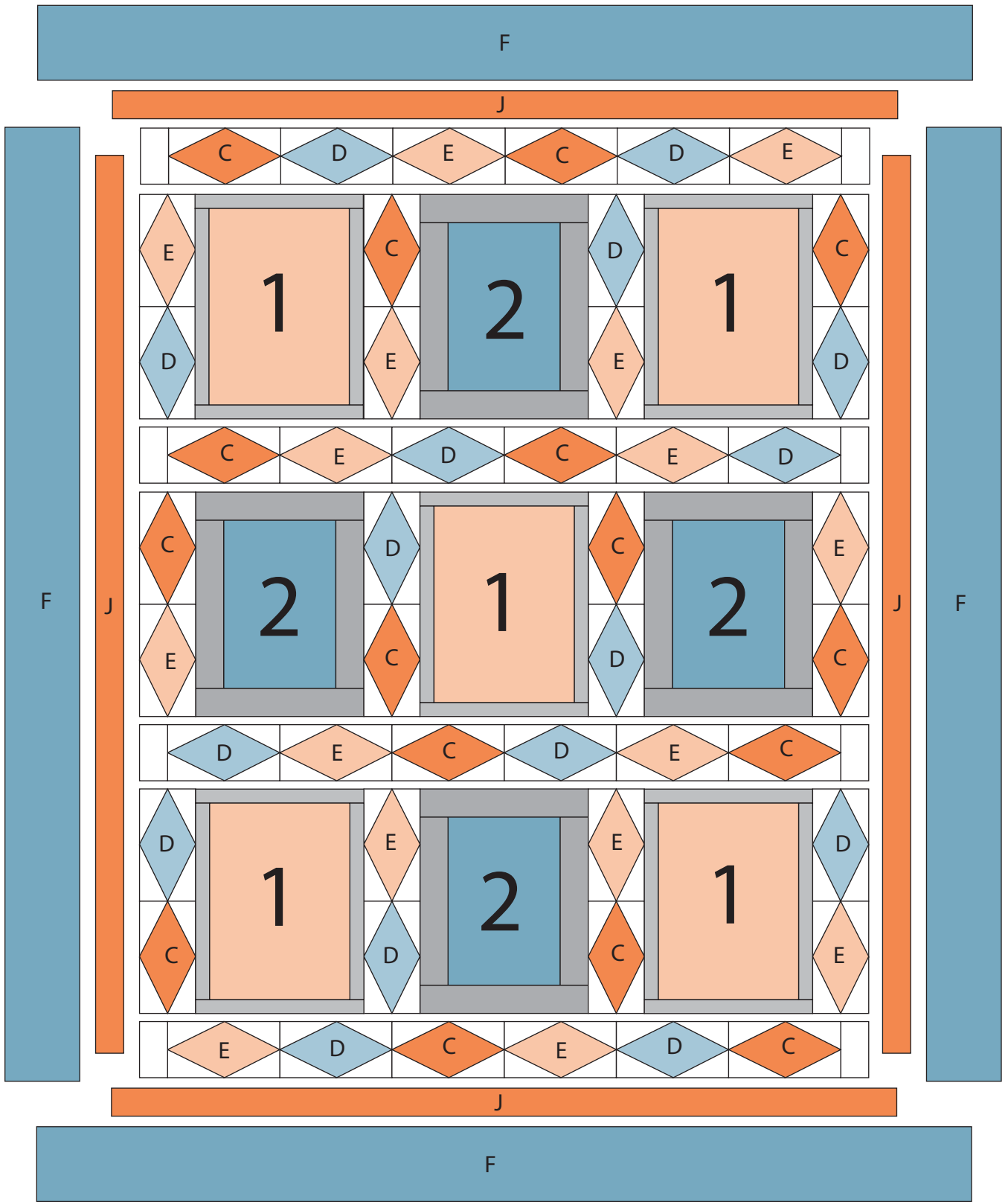


Fig. 11

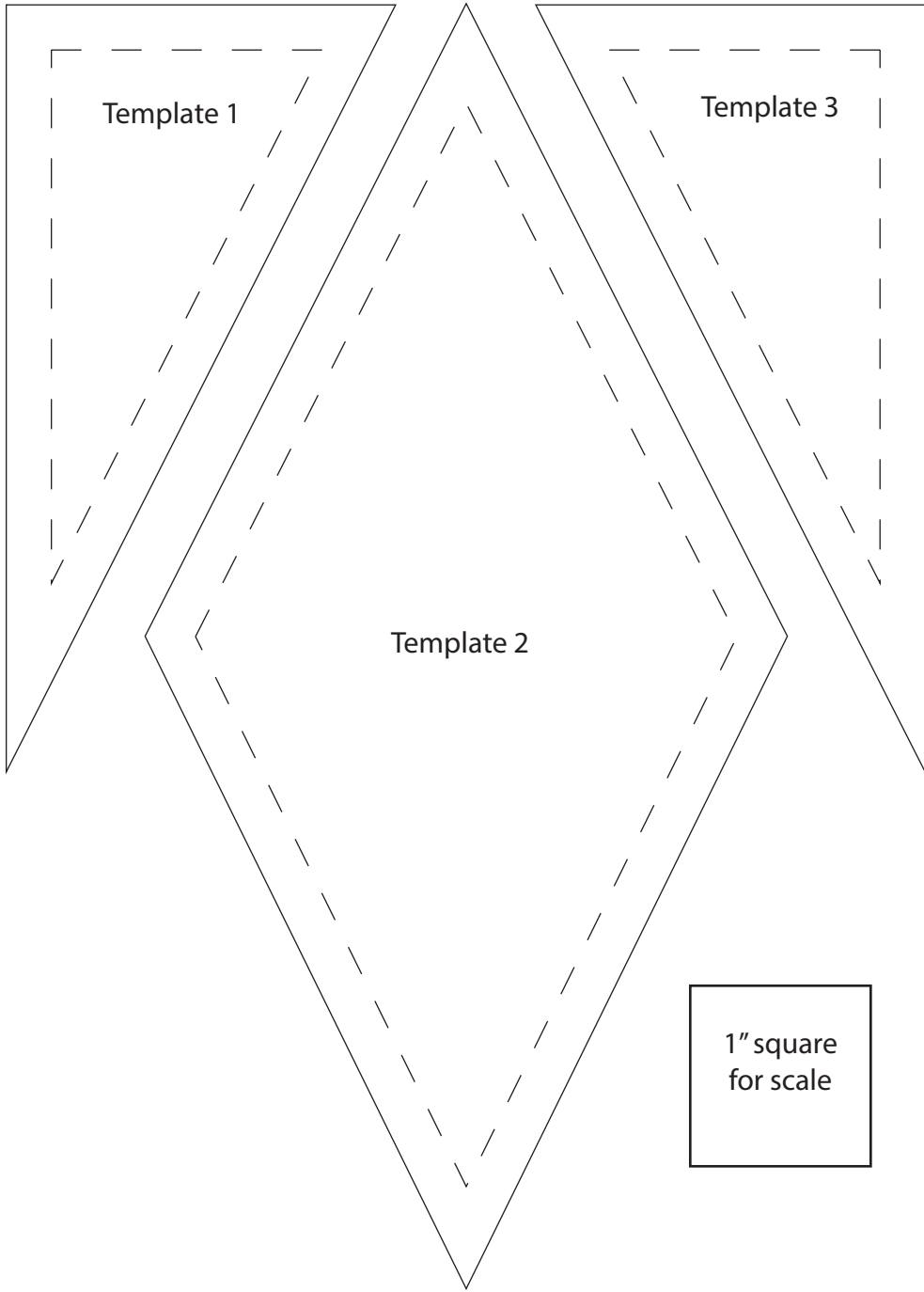
Quilt Top Assembly

(Follow the Quilt Layout while assembling the quilt top.)

10. Sew six assorted Blocks together end to end to make one strip. Sew one 2" x 3 1/2" Fabric I strip to each end of the strip to make one sashing strip. Repeat to make four sashing strips total.
11. Sew eight assorted Blocks, two Block Ones and one Block Two together to make Row One. Repeat to make Row Three.
12. Sew eight assorted Blocks, two Block Twos and one Block One together to make Row Two.
13. Sew the four sashing strips and three rows, in numerical order, together, alternating them, to make the Center Block.
14. Sew one 2" x 48 1/2" Fabric J strip to each side of the Center Block. Sew one 2" x 42 1/2" Fabric J strip to the top and to the bottom of the Center Block.
15. Sew one 4 1/2" x 51 1/2" Fabric F LOF strip to each side of the Center Block. Sew one 4 1/2" x 50 1/2" Fabric F strip to the top and to the bottom of the Center Block to make the quilt top.
16. Layer and quilt as desired.
17. Sew the six 2 1/2" x WOF Fabric G strips together, end-to-end with 45° seams, to make the binding. Fold this long strip in half lengthwise with wrong sides together and press.
18. Bind as desired.



Quilt Layout



Template 1

Template 3

Template 2

1" square
for scale