

# HARLEQUIN FROST

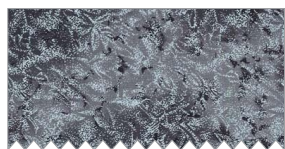


SIZE : 40" x 64" | SKILL LEVEL: CONFIDENT BEGINNNGER | QUILT DESIGNED BY MARINDA STEWART



# FABRIC REQUIREMENTS

45" x 70" Backing & 45" x 70" Batting



CM0376 Charcoal  
Fairy Frost  
1/2 yard



CM0376 Dusk  
Fairy Frost  
Fat 1/8



CM0376 Bark  
Fairy Frost  
Fat 1/8



CM0376 Garland  
Fairy Frost  
Fat 1/8



CM0376 Hunter  
Fairy Frost  
Fat 1/8



CX1087 Parchment  
Marble  
Fat 1/8



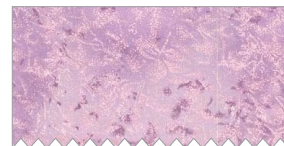
CM0376 Currant  
Fairy Frost  
Fat 1/8



CM0376 Jungle  
Fairy Frost  
Fat 1/8



K1063 (Blue)  
Krystal  
Fat 1/8



CM0376 Cupid  
Fairy Frost  
Fat 1/8



CM0376 Basil  
Fairy Frost  
Fat 1/8



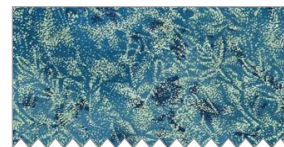
CM0376 Meadow  
Fairy Frost  
Fat 1/8



CM0376 Bordeaux  
Fairy Frost  
Fat 1/8



CM0376 Jade  
Fairy Frost  
Fat 1/8



CM0376 Cabana  
Fairy Frost  
Fat 1/8



CM0376 Cherry  
Fairy Frost  
Fat 1/8



CM0376 Clay  
Fairy Frost  
Fat 1/8



CM0376 Cadet  
Fairy Frost  
Fat 1/8



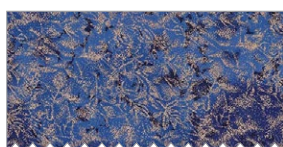
CM0376 Gunmetal  
Fairy Frost  
Fat 1/8



CM0376 Eggplant  
Fairy Frost  
Fat 1/8



CM0376 Mineral  
Fairy Frost  
Fat 1/8



CM0376 Dark Blue  
Fairy Frost  
Fat 1/8



CM0376 Chocolate  
Fairy Frost  
Fat 1/8



CM0376 Cupcake  
Fairy Frost  
Fat 1/8



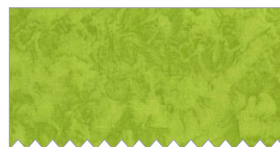
CM0376 Dirt  
Fairy Frost  
Fat 1/8



Pillow



K1024 (Gold)  
Krystal  
Fat 1/8



K4058 (Green)  
Krystal  
Fat 1/8



Pillow

## Harlequin Frost Quilt with Optional Accent Pillows

Designed by Marinda Stewart

Skill Level: Confident Beginner

Size: 40" x 64"

Fabrics	Yardage	Cutting
CM0376 Charcoal Fairy Frost	½ yard	(6) 2 ½" x W.O.F. - binding
CM0376 Dusk, Bark, Garland, Hunter, Currant, and Jungle  Fairy Frost	Fat 1/8 each color	(4) 5" x 9" pieces of each color
CX1087 Parchment Marble		
K1063 (Blue) Krystal	Fat 1/8	(4) 5" x 9" pieces
CM0376 Cupid, Basil, Meadow, Bordeaux, Jade, Cabana, Cherry, Clay, Cadet, Gunmetal, Eggplant, Mineral, Dark Blue, Chocolate, Cupcake, and Dirt  Fairy Frost	Fat 1/8 each color	(3) 5" x 9" each color **
K1024 (Gold) Krystal	Fat 1/8	(3) 5" x 9" each color **
K4058 (Green) Krystal		
<b>ALSO NEEDED:</b> 45" X 70" backing, 45" x 70" batting, thread to match, scissors, straight pins, rotary cutter, acrylic ruler, and mat.  -----		
<b>NOTE:</b> Quilt is made from one block in (13) color combinations		
* Add 1/8 if making companion accent pillows (2) ** If making pillows cut (4) 5" x 9" pieces each color		

**Directions:**

1. To make (1) block, place one light 5" x 9" rectangle diagonally right sides together on top of one dark 5" x 9" rectangle. The pieces will be offset – dark upper left corner, and lower right aligned with light upper right corner, and lower left.



Draw a diagonal line between corners. Pin. Stitch  $\frac{1}{4}$ " on each side of the drawn line. Cut apart. Press. Trim each block to an accurate  $4\frac{1}{2}$ " x  $8\frac{1}{2}$ ". Yield – (2) blocks. Alternate corners to make right and left triangle units. Make the following units with the following combinations:

Number	Light	Dark	Left Units	Right Units
1	Dusk	Bark	4	3
2	Cupid	Basil	2	4
3	Meadow	Bordeaux	4	2
4	Jade	Cabana	2	4
5	Cherry	Clay	4	2
6	Garland	Hunter	3	4
7	CX1087 Parchment	Currant	3	4
8	K1024 Gold	Cadet	4	1
9	Gunmetal	Eggplant	3	2
10	Mineral	Dark Blue	2	4
11	K1063 Blue	Jungle	3	4
12	K4058 Green	Chocolate	2	4
13	Cupcake	Dirt	4	2
There will be (6) unused triangle blocks left over. (70) Triangle blocks will be used in the quilt top.				

**Note:** If making the companion pillows, make (4) right and (4) left units of every color combination. Set aside the unused units for the pillows.

2. To assemble the quilt top, sew the following blocks together into rows of (10) blocks  $8\frac{1}{2}$ " x  $40\frac{1}{2}$ ". Sew each completed row to the bottom of the previous row for a total of (8) rows. Rows # 2, 4, 6, & 8 reverse direction.

Row #1	Combo #1 – left, #2 -right, #3 – L, #4 – R, #5 – L, #6 – R, #7 – L, #8 – R, #9 – L, #10 – R
Row #2	#7 – R, #11 – L, #12 – R, #10 – L, #1 – R, #8 – L, #3 – R, #4 -L, #2 – R, #13 – L
Row #3	#8 – L, #13 – R, #9 – L, #2 – R, #3 -L, #12 – R, #5 -L, #11 -R, #1 – L, #6 -R
Row #4	#12 – R, #6 – L, #11 – R, #5 – L, #1 – R, #13 – L, #4 – R, # 10 – L, #7 – R, #9 – L
Row #5	#7 -L, #2 – R, #13 – L, #12 – R, #6 – L, #8 – R, #3 – L, #10 – R, #1 – L, #5 – R
Row #6	#6 – R, #5 – L, #11 – R, #9 -L, #1 – R, #2 – L, #8 – R, #12 – L, #4 – R, #3 – L

Row #7	#8 – L, #4 -R, #2 -L, #10 -R, #13 – L, #5 – R, #11 -L, #6 -R, #1 – L, #7 - R
Row #8	#13 – R, #6 – L, #7 – R, #11 – L, #9 – R, #12 – L, #3 -R, #4 - L, #8 – R, #10 - L

These two alternating rows will create a light and dark diamond pattern. Colors may be rearranged as desired while maintaining the pattern of the quilt top.

3. Layer backing, batting, and quilt top. Baste.
4. Quilt as desired.
5. Bind quilt using Charcoal 2 ½" strips pieced as needed for length.

**PILLOWS:** (2) 16" x 20" pillow covers - [purchase (2) 16" x 20" pillow forms]

Additional yardage:	1/8" yard Charcoal (4) 2" x W.O.F. pieces 3/8 yard pillow backing fabric of choice (4) 13 ½" x 16 ½" pieces
---------------------	--

#### DIRECTIONS:

1. Divide completed triangle blocks into right and left units. Cut one left block and one right block in half vertically to make 2 ¼" x 8 ½" pieces. Reverse the position of each strip to make (1) tall peak and (1) short peak in each block.



Re-assemble the 2 ¼" strips randomly in right and left pairs. Sew together (3) right and (3) left units into a row. Make (2) rows. Sew Row #1 to Row #2 inverting Row #2 to create a new pattern. Finished pillow top is 16 ½" x 21 ½". Make two.

2. For backing – on one side of one 13 ½" x 16 ½" piece turn under ¼" on one 13 ½" side. Press. Turn under ¼" again. Press. Topstitch in place. Repeat for remaining (3) pieces.

3. Place on 16 ½" x 13 ½" piece wrong side up. Overlap a second 16 ½" x 13 ½" piece with the seams in the middle. Arrange backing pieces to fit the 16 ½" x 21 ½" pieced top. Place top

right side up on top of the overlapped backing pieces. Topstitch around on all four sides  $\frac{1}{4}$ " from the end?

4. To finish the edges – piece (2) 2" x W.O.F. Charcoal strips. Sew to the pillow top using  $\frac{1}{2}$ " seam allowance on all four sides. Miter each corner. Turn under raw edges at beginning and ending of binding. Turn binding to the back of the pillow? Turn under raw edge. Topstitch in place to finish. Insert 16" x 20" pillow form to complete.

**OPTIONAL:** Pillow tops may also be finished into two placemats. Cut backing and batting to size, layer, quilt, bind raw edges with Charcoal to finish.