

MAGIC STARS QUILT



Finished Size: 74" W x 90 " H | Pattern Designed by Sarah Jane

YARDAGE



MD7194-WHIT-D

3 yards

Background, Border, and Sashing



MD7191-AQUA-D

5 1/3 yard

Backing



MD7191-BLOS-D

1/2 yard

Star Blocks



MD7190-NAVY-D

1/2 yard

Star Blocks



MD7188-BLOS-D

1/2 yard *

Star Blocks



MD7188-WHIT-D

1/2 yard *

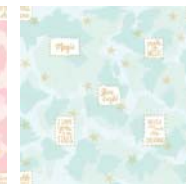
Star Blocks



MD7193-PINK-D

1/2 yard *

Star Blocks



MD7193-TURQ-D

1/2 yard *

Star Blocks



MD7189-MINT-D

3/4 yard *

Star Blocks



MD7197-TURQ-D

7/8 yard

Blocks and Binding



DC7196-NAVY-D

1/4 yard

Star Blocks



MD7197-GRAY-D

1/4 yard

Star Blocks



MD7197-PINK-D

1/4 yard

Star Blocks



MD7192-MIST-D

1/4 yard

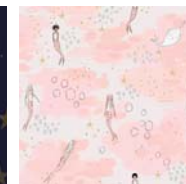
Star Blocks



MD7194-NAVY-D

1/4 yard

Star Blocks



MD7192-BLOS-D

1/4 yard

Star Blocks



MD7190-WHIT-D

1/4 yard

Star Blocks

*Added in extra to account for fussing cutting the prints.

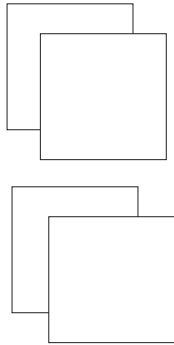
Magic Stars Quilt

Finished quilt size: 74" x 90"

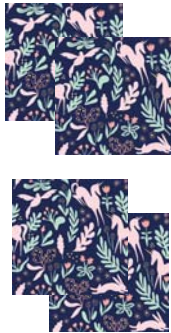
Finished Block measures 14"

Cutting Instructions per block:

From **Star** Fabric Cut:
1 square 7 1/2" x 7 1/2"
4 squares 4 3/8" x 4 3/8"



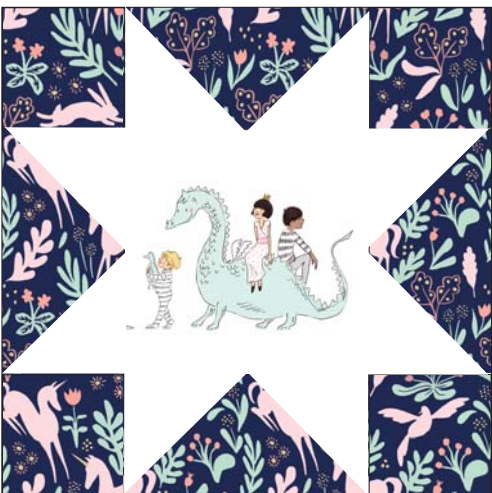
From **Background** Fabric Cut:
1 square 8 1/4" x 8 1/4"
4 squares 4" x 4"



From **Sashing** Fabric Cut:
16 strips 2 1/2" by WOF
Subcut 8 of the 2 1/2" strips
into 15 - 2 1/2" x 14 1/2"

From **Border** Fabric Cut:
8 strips 6 1/2" by WOF

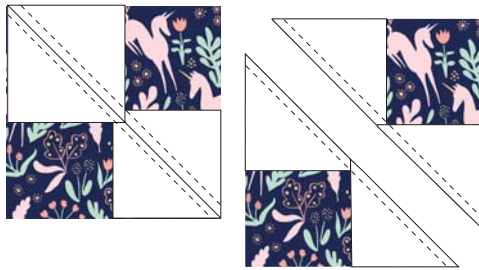
From **Binding** Fabric Cut:
9 strips 2 1/4" by WOF



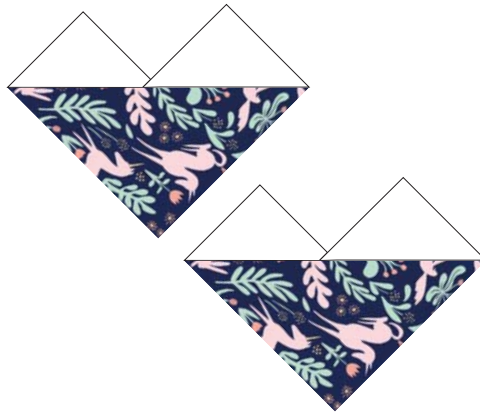
Block Assembly:

Following are instructions to make one magic star quilt block:

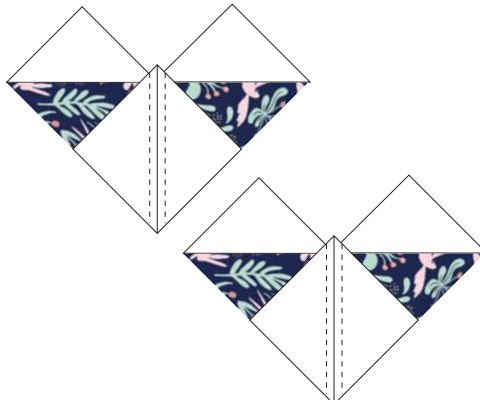
Draw a line on the wrong side of all the 4 3/8" x 4 3/8" squares. Lay two of those squares corner to corner (they will overlap in the center) on the 8 1/4" x 8 1/4" background fabric. Sew 1/4" on each side of the line. Cut on marked line.



Press seams open as shown below



Lay final two 4 3/8" x 4 3/8" squares on bottom corner of flying geese units. Sew 1/4" on each side of line. Cut on marked line.

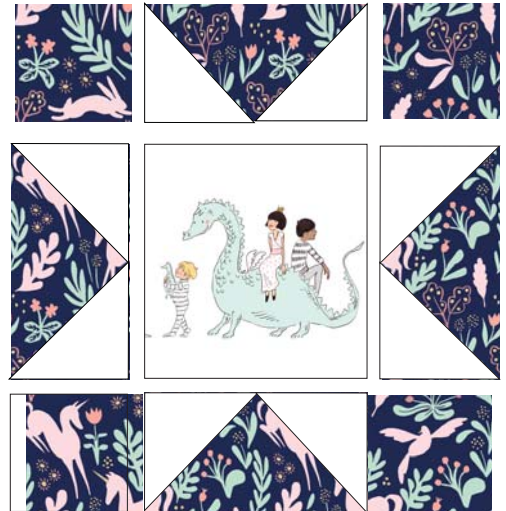


Press seams open as shown below:



Flying geese units will measure 4" x 7 1/2"

Using the rest of the Star Block pieces. Assemble block as follows:



Make **20** Magic Star blocks.

Quilt Assembly:

Layout blocks 4 across and 5 down. Sew 2 1/2" x 14 1/2" sashing strips between each block.

Sew sashing between each row.

Sew Rows together.

Add 6 1/2" border onto quilt.

Quilt and Bind as desired.

Quilt designed by: Sarah Jane of
Sarah Jane Studios
Pattern written by: Kaitlyn Pallas of
Knot and Thread Design