

# CIRCLES



SIZE: 56" W X 64" H | QUILT DESIGNED BY TARA FAUGHNAN



# FABRIC REQUIREMENTS

Backing: 64" x 72"  
Binding: 1/2 yard



CX7030 Multi  
Wove It or Weave It  
1/4 yard



CX7032 Aqua  
I Wove You  
1/4 yard



CX7032 Bubblegum  
I Wove You  
1/4 yard



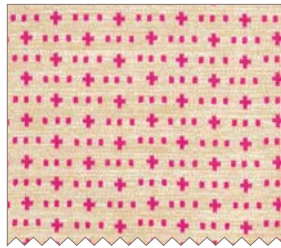
CX7032 Citron  
I Wove You  
3/4 yard



CX7033 Bubblegum  
Weave It Alone  
1/4 yard



CX7033 Citron  
Weave It Alone  
5/8 yard



CX7033 Hot  
Weave It Alone  
5/8 yard



CX7033 Khaki  
Weave It Alone  
5/8 yard



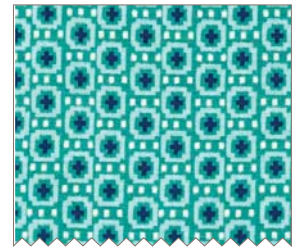
CX7033 Marine  
Weave It Alone  
1/4 yard



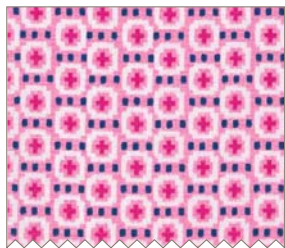
CX7033 Tan  
Weave It Alone  
5/8 yard



CX7033 Twilight  
Weave It Alone  
1/2 yard



CX7034 Marine  
Weave The People  
5/8 yard



CX7034 Pink  
Weave The People  
5/8 yard



CX7034 Yellow  
Weave The People  
5/8 yard



CX7035 Aqua  
Wove Is Me  
1/2 yard



CX7035 Hot  
Wove Is Me  
1/4 yard



CX7035 Royal  
Wove Is Me  
1/4 yard

Circles Quilt- 56" by 64" Designed and made by Tara Faughnan

FABRIC	YARDAGE	8.5" square	7.5" square	Template B	Template C
CX7030 multi Wove It or Weave It	1/4 yd		3		
CX7032 aqua I Wove You	1/4 yd		2		3
CX7032 bubblegum I Wove You	1/4 yd		2		3
CX7032 citron I Wove You	3/4 yd	4	2	3	2
CX7033 bubblegum Weave it Alone	1/4 yd		3		2
CX7033 citron Weave it Alone	5/8 yd	3		4	
CX7033 hot Weave it Alone	5/8 yd	3		5	
CX7033 khaki Weave it Alone	5/8 yd	6		1	
CX7033 marine Weave it Alone	1/4 yd		3		2
CX7033 tan Weave it Alone	5/8 yd	5		2	
CX7033 twilight Weave it Alone	1/2 yd		4		2
CX7034 marine Weave the People	5/8 yd	4	2	3	1
CX7034 pink Weave the People	5/8 yd	4	2	2	1
CX7034 yellow Weave the People	5/8 yd	3	2	4	
CX7035 aqua Wove is Me	1/2 yd		3		3
CX7035 hot Wove is Me	1/4 yd		2		3
CX7035 royal Wove is Me	1/4 yd		2		2
Backing	64" x 72"				
Batting	64" x 72"				
Binding	1/2 yd				



# Circles Quilt

56" by 64"

Tara Faughnan

## MATERIALS:

- Refer to cutting chart for yardage requirements
- Rotary cutting supplies
- Low loft batting
- Heat resistant template material (posterboard)
- Marking pen/ pencil
- Printer for templates
- Spray starch (optional)

## NOTES:

- Sew all seams using an exact 1/4" seam allowance
- This quilt is made up of 2 different blocks: A drunkards path block and a circle block
- Before you begin sewing, print out templates A and B and C. Trace templates onto posterboard, and carefully cut along drawn line.

## CIRCLE BLOCK ASSEMBLY:

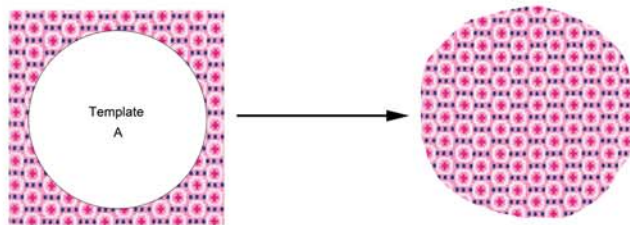
You will need:

One 8.5" square for base

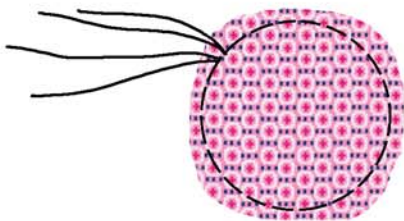
One 7.5" square for the applique circle

Template A

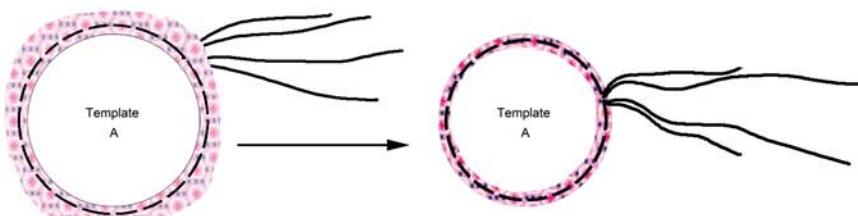
1. Place template A on top of the 7.5" square, and cut out a circle roughly 1/4" to 1/2" larger than the template.



2. Use a long stitch length and sew a basting stitch around the outer edge of the fabric circle, about 1/8"-1/4" away from the edge. Leave long threads at beginning and end.



3. Place template A on the wrong side of the fabric circle, and gently pull either the top or bobbin threads to gather the fabric around the template. It can be helpful to use different color threads in the top and bobbin for this step.



4. Iron the edges of the circle in place. You can starch the circle at this point if you wish.

5. Carefully remove the template from the fabric circle, and if necessary, gently re-press the edges.

6. Center the circle on top of the 8.5" square. Pin in place and stitch down the edges with whatever decorative stitch you like. I used a zig zag stitch and clear monofilament thread.



TIP: This type of applique can sometimes distort the backing fabric very slightly. If your block is coming out too small, you can cut the 8.5" square just slightly larger to account for this, and then square up to 8.5" after you finish the block.

7. Make 32 circle blocks, following the quilt diagram for fabric combinations.

#### DRUNKARD'S PATH BLOCK ASSEMBLY:

You will need:

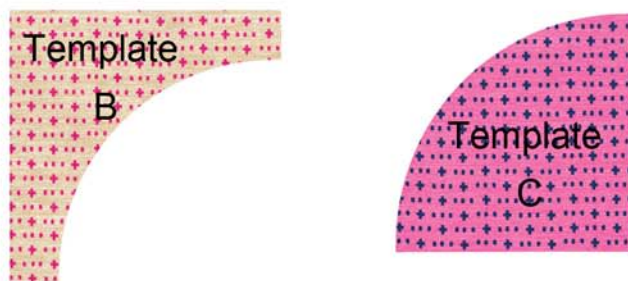
Template B

Template C

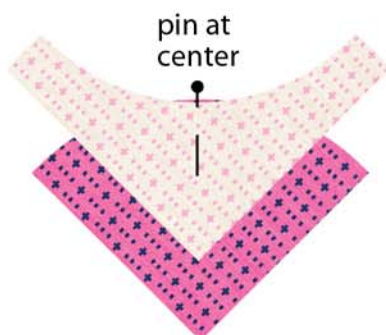
Marking pen or pencil

2 different print fabrics

1. Trace out Templates B and C on two different print fabrics. Cut out the shapes exactly, as the templates already have seam allowance added.



2. Find the center of each piece by folding in half and marking at the crease. Place fabrics right sides together (RST) with B on top, and pin at the center.



3. Line up the ends and pin together. Fill in with pins as needed. Sew along the edge using an exact 1/4" seam allowance.



4. Press seam towards B.

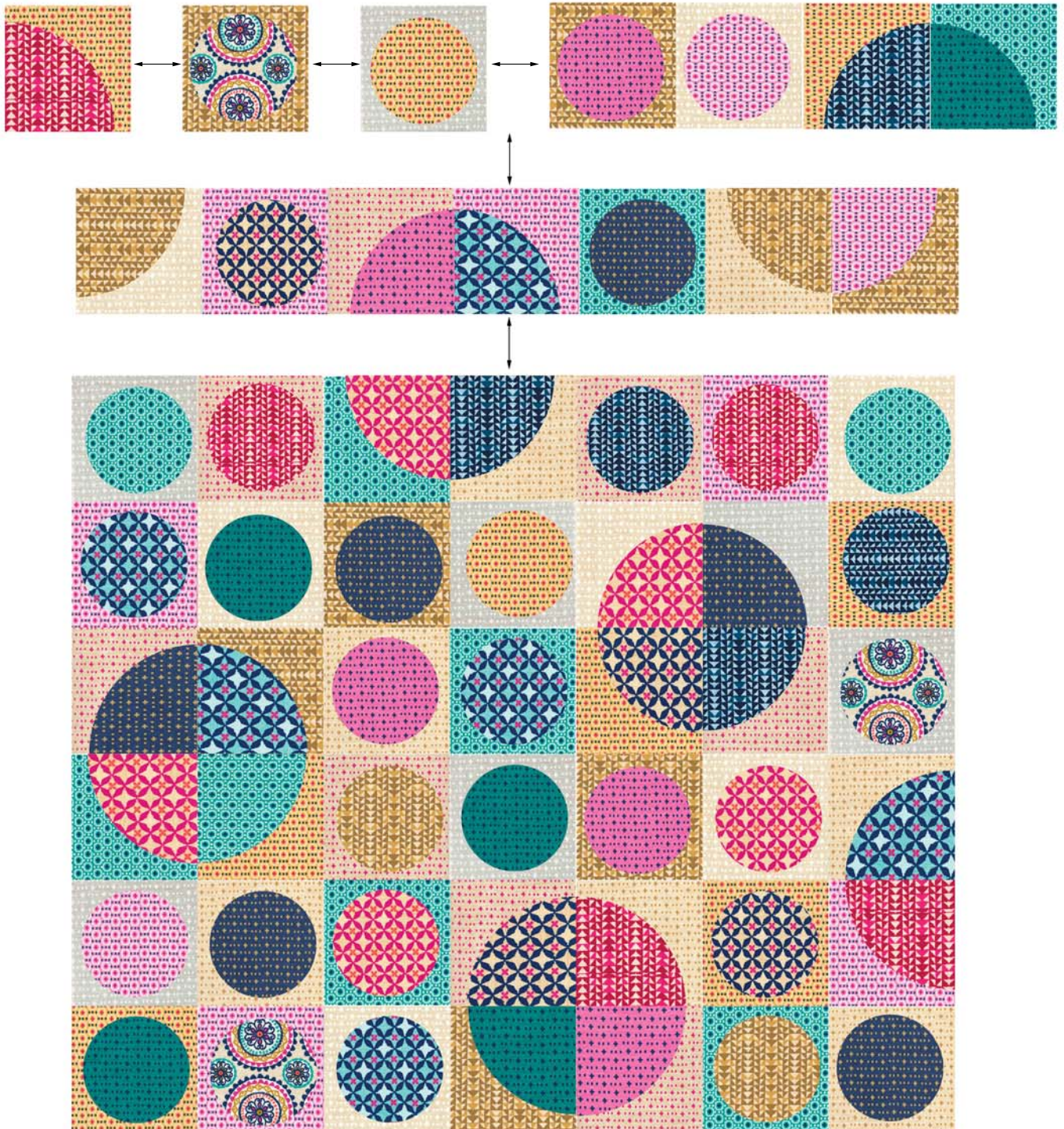


5. Make 24 drunkard's path blocks, following the quilt diagram for fabric combinations.



## QUILT TOP ASSEMBLY

1. Lay out the blocks following the quilt diagram below.
2. Sew row 1 together, pressing seams in the same direction as you go.
3. Sew row 2 together, pressing seams in the opposite direction from row 1.
4. Continue sewing all 8 rows, pressing seams in the opposite direction from the row above.
5. Sew the rows together for final quilt top.
6. Layer top, batting and backing together and quilt as desired.



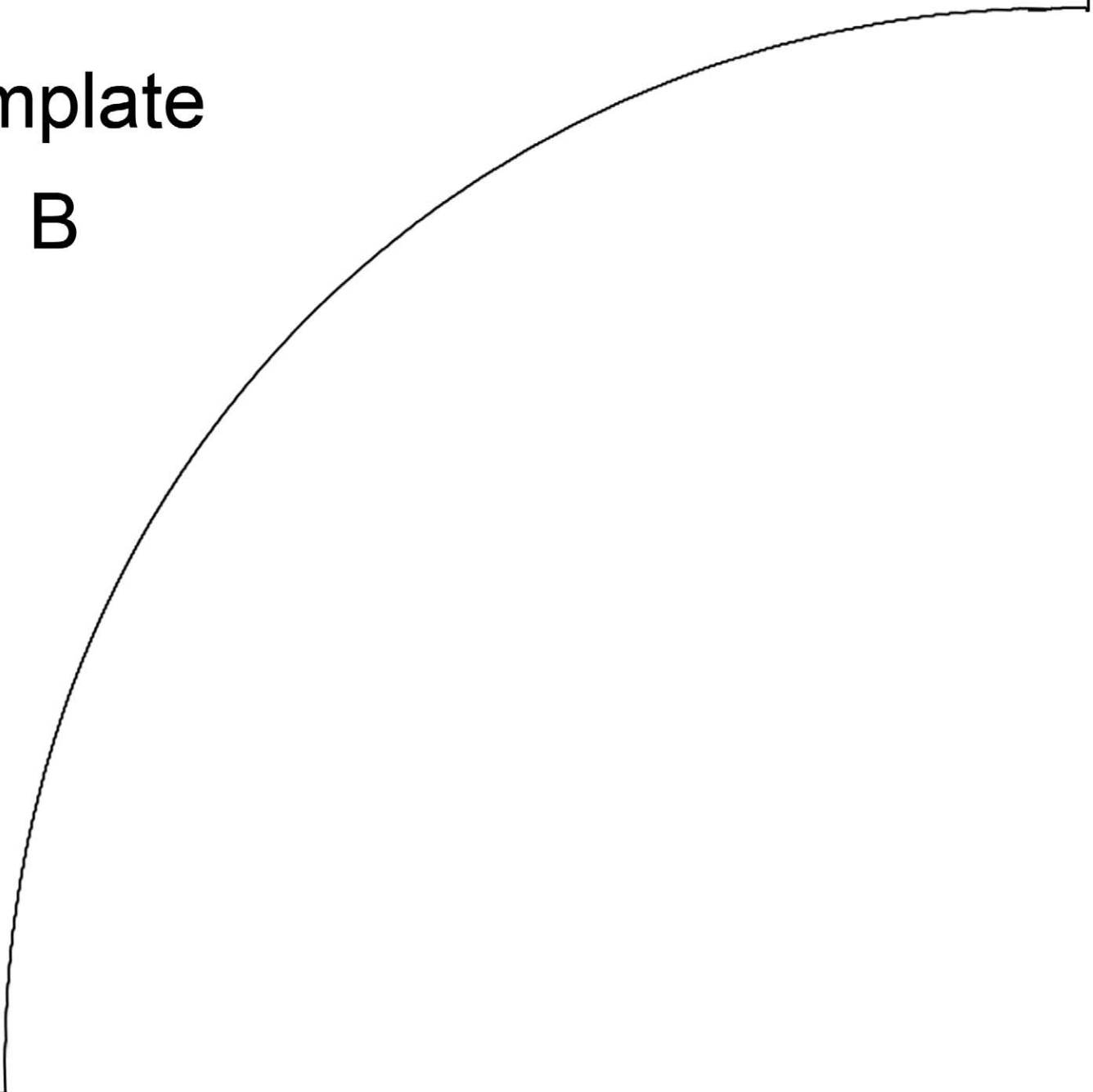


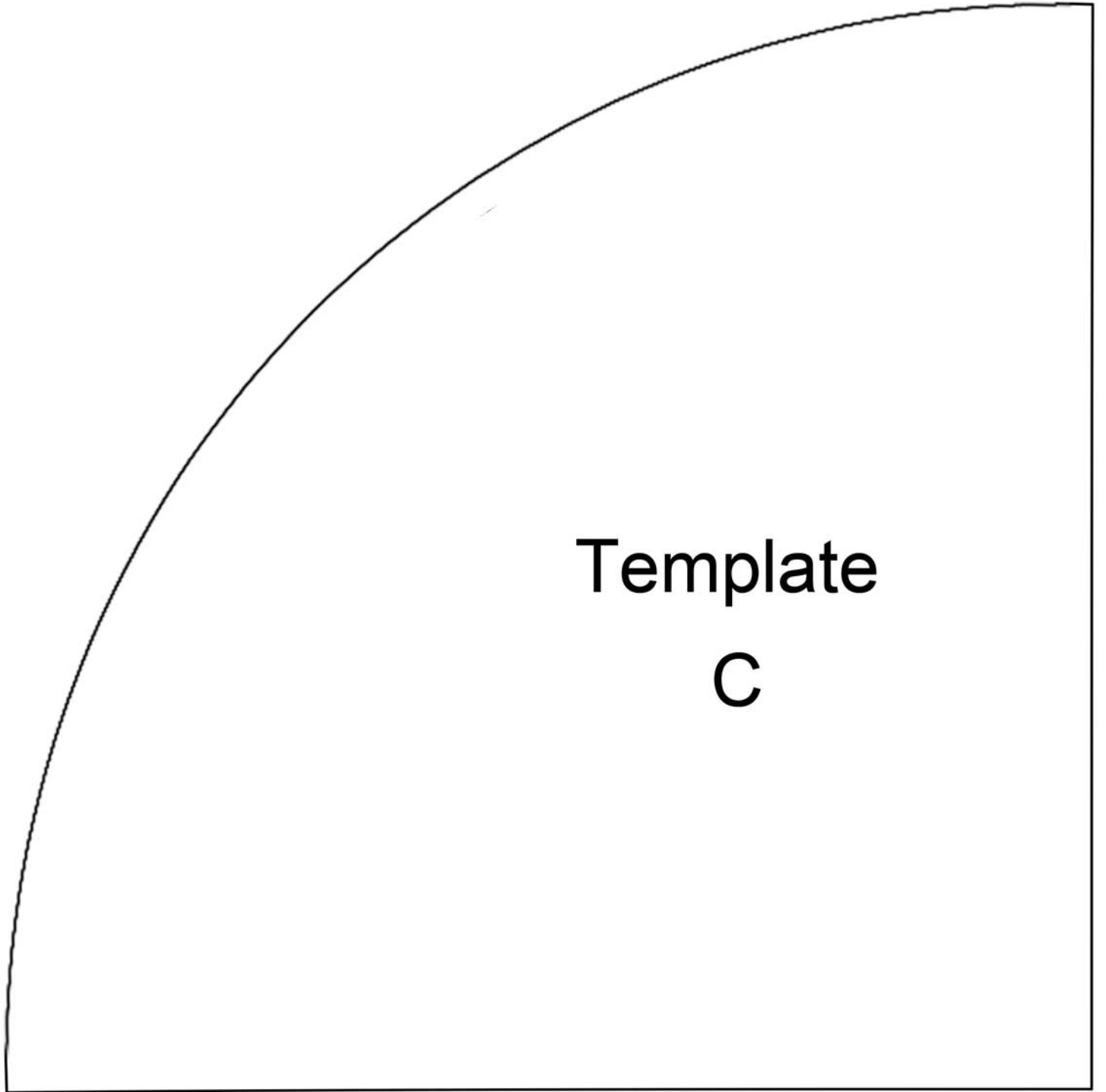
**Template**

**A**



**Template**  
**B**





Template

C