

EQUESTRIAN



SIZE: 60" W x 60" H | SKILL LEVEL: BEGINNER | QUILT DESIGNED BY JESSEE MALONEY

FABRIC REQUIREMENTS

4 yards of your choice for the backing



CX7233 Denim
Outstanding in their Field
1 yard if you fussy cut



CX7239 Denim
Pony Up
3/4 yard



CX7238 Denim
Hot to Trot
3/4 yard



CX7238 Cream
Hot to Trot
1 yard



CX7237 Denim
Waylon
1/4 yard



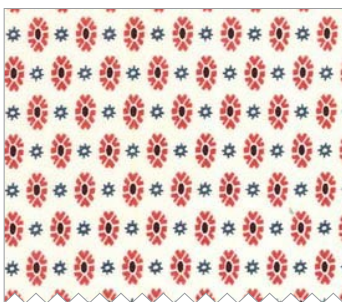
CX7236 Red
Lucky Horseshoe
1 yard



CX7236 Denim
Lucky Horseshoe
1/2 yard



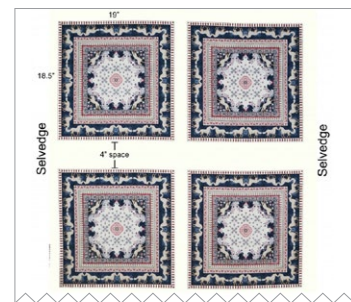
CX7235 Denim
Cash
1/2 yard



CX7235 Creme
Cash
1 yard



CX4594 Denim
Bud Loop
3/4 yard for binding



CX7234 Denim
Running Around
1 Square Panel

Equestrian
Size: 60" H x 60" W
Yardage Requirements:

CX7234 Denim Running Around	1 Square Panel
CX7239 Denim Pony Up	$\frac{3}{4}$ yard
CX7238 Denim Hot to Trot	$\frac{3}{4}$ yard
CX7238 Cream Hot to Trot	$\frac{3}{4}$ yard or 1 yard for a little more wiggle room with the paper piecing
CX7237 Denim Waylon	$\frac{1}{4}$ yard
CX7236 Red Lucky Horseshoe	1 yard
CX7236 Denim Lucky Horseshoe	$\frac{1}{2}$ yard
CX7235 Denim Cash	$\frac{1}{2}$ yard
CX7235 Cream Cash	$\frac{3}{4}$ yard or 1 yard for a little more wiggle room with the paper piecing
CX4594 Denim Bud Loop	$\frac{3}{4}$ yard for binding
CX7233 Denim Outstanding in their Field	1 yard if you fussy cut the pieces, $\frac{1}{4}$ yard if not
4 yards of your choice for the backing	

Cutting Instructions for the Quilt Top:

R= Row, C= Corner Block & B= Block
Center - 20.5"x20.5" square.
R2 - 2.5"x 26.5" - Quantity 4
C2 - 2.5"x 2.5" - Quantity 4
C3 - 5.5"x 5.5" - Quantity 4
R4 - 2.5"x 40.5" - Quantity 4
C4 - 2.5"x 2.5" - Quantity 4
B5 - 4.5"x 6.5" - Quantity 24 of one color & Quantity 20 of the other color
C5 - 6.5"x 6.5" - Quantity 4
R1 & R3 are paper pieced rows, so proceed the way you would normally cut for these blocks.
C1 is a 3.5"x 3.5" unfinished half square triangle

Piecing Instructions:

- R1 & R3 are made up of Flying Geese. I have provided two paper piecing templates to make sure you get the perfect block every single time. Start with A, which will be your center triangle and then add on side B, trim, and then add side C & trim. Make sure to press and then trim the finished block using the 1/4" seam allowance shown as a dashed line.
- Once you have all of R1's flying geese assembled, piece together four in a row, stitching up the short side. This will give you a 3.5"x 20.5" unfinished row. R3's flying geese will be assembled in rows of six and will give you an unfinished strip measuring 5.5"x 30.5"
- For the C1 corners, you will need four half square triangle measuring 3.5"x 3.5" unfinished in the same colors as the flying geese.
- Attach the C1 corners to each end of two of the R1 rows. Make sure the seams that touch is the same color fabric.
- Next attach a R1 row without corners to the top of the center block, and then another one on the bottom. Make sure to flip the row so that the same colors are touching the center all the way around. Once they are done, then attach the two R1 rows that have the C1 corners on either end. Make sure to match up any seams.
- Continue this order for each row shown in the diagram up to R4. Always attach the corner blocks to the ends of two rows only. Then attach the rows without corners first, before piecing on the rows with corners. This will allow for a much smoother process.
- For R5, piece together the 4.5"x 6.5" blocks with the seam on the 6.5" side. Alternate every other block with the two fabrics you picked out. The finished row should have 11 blocks and measure 6.5"x 44.5" unfinished. Attach the rows and the C5 corners the same as the rest.

