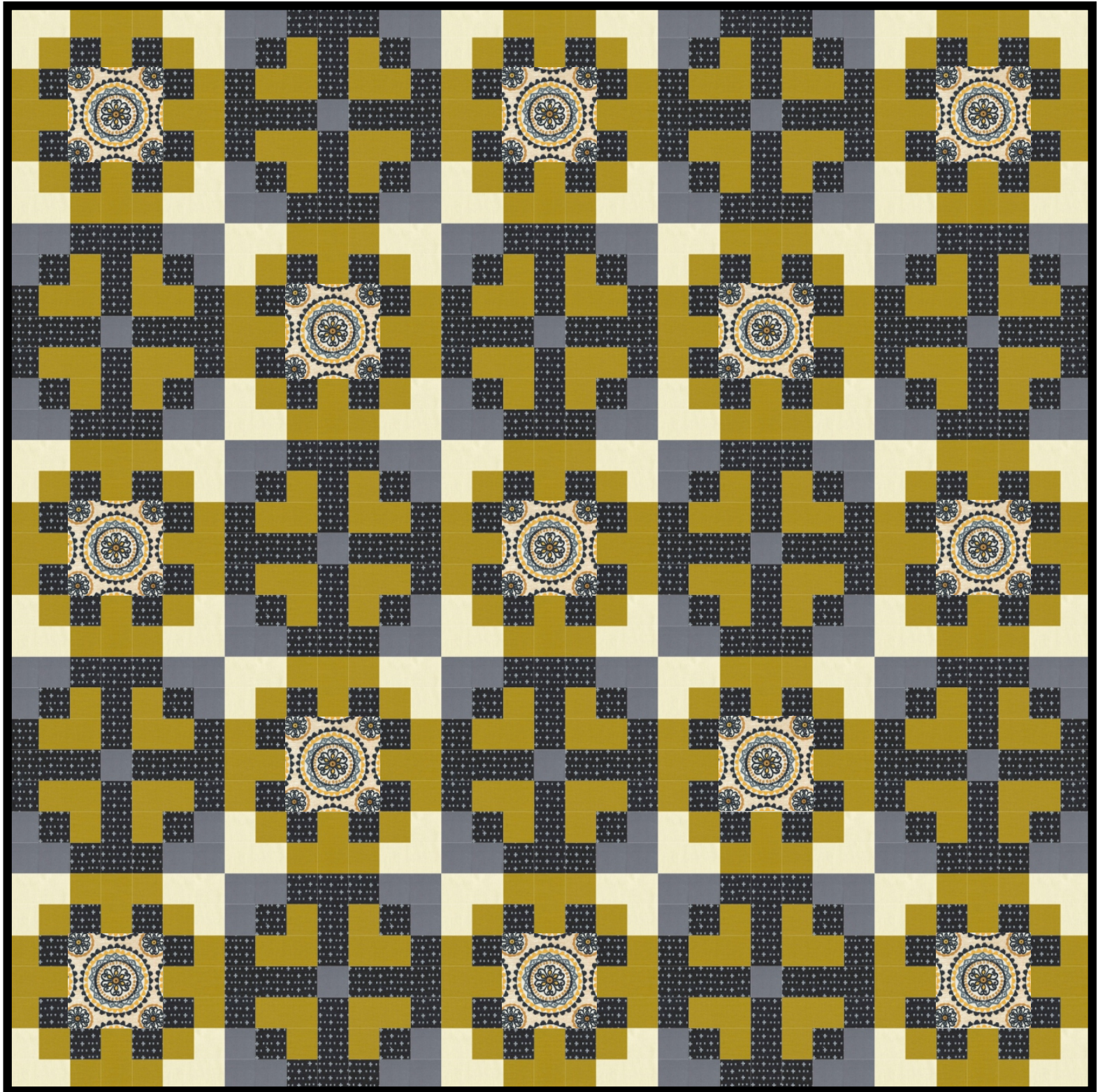


WOVE IT OR WEAVE IT



SIZE: 70" x 70" | SKILL LEVEL: BEGINNER | QUILT DESIGNED BY SWIRLY GIRLS

Wove It or Weave It

70" x 70"

Fabric Requirements:

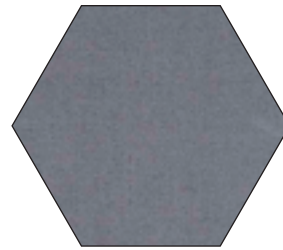
CX7030 Wove It or Weave It Citron: 1-1/4 yards
CX7033 Weave It Alone Coal: 2-3/4 yards
SC5333 Cotton Couture Clay: 3/4 yard
SC5333 Cotton Couture Cream: 1 yard
SC5333 Cotton Couture Gold: 2 yards
CX7033 Weave It Alone Citron: 5 yards (backing)



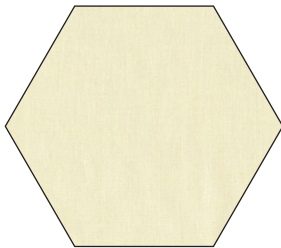
CX7030 Wove It or Weave It
Citron
1-1/4 yards



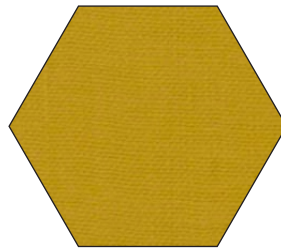
CX7033 Weave It Alone
Coal
2-3/4 yards
(includes binding)



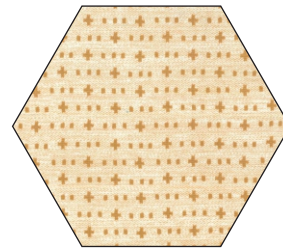
SC3333 Cotton Couture
Clay
3/4 yard



SC3333 Cotton Couture
Cream
1 yard



SC3333 Cotton Couture
Gold
2 yards



CX7033 Weave It Alone
Citron
5 yards
(backing)

Wove It or Weave It

by Swirly Girls Design

70" x 70"

Cutting:

WOF = Width of Fabric

CX7030 Citron: Fussy Cut [13] 6-1/2" squares with medallion centered

CX7033 Coal: Cut [4] 6-1/2" x WOF strips;
from [2] strips subcut [24] 2-1/2" x 6-1/2" rectangles (set aside remaining strips)
[23] 2-1/2" x WOF strips (set aside [7] strips for binding)

SC5333 Clay: Cut [3] 4-1/2" x WOF strips

[4] 2-1/2" x WOF strips

SC5333 Cream: Cut [4] 4-1/2" x WOF strips

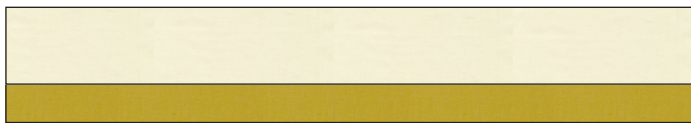
[4] 2-1/2" x WOF strips

SC5333 Gold: Cut [7] 4-1/2" x WOF strips;
from [4] strips subcut [52] 2-1/2" x 4-1/2" rectangles (set aside remaining strips)

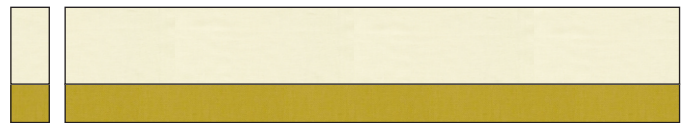
[15] 2-1/2" x WOF strips

Piecing:

Sew a 4-1/2" Cream strip lengthwise to a 2-1/2" Gold strip. Press toward Gold strip. Repeat to make [4] strip sets.
Crosscut [52] 2-1/2" units from strip sets.

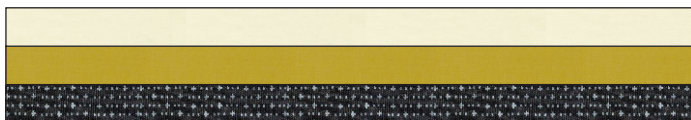


Make 4

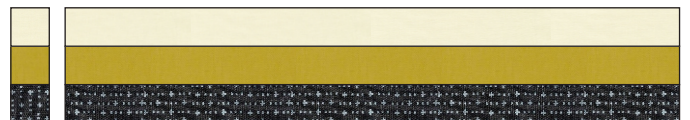


2-1/2"
Cut 52

Sew a 2-1/2" Cream strip, a 2-1/2" Gold strip and a 2-1/2" Coal strip lengthwise. Press toward Gold strip. Repeat to make [4] strip sets. Crosscut [52] 2-1/2" units from strip sets.

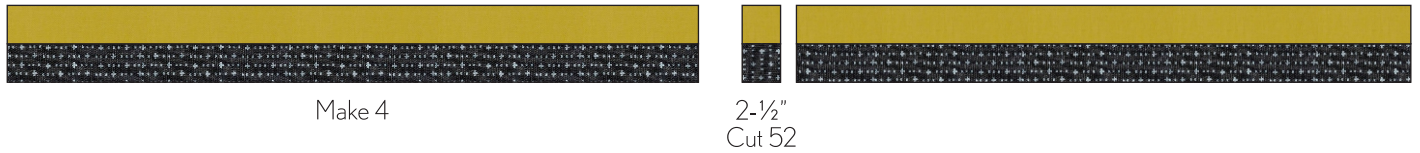


Make 4

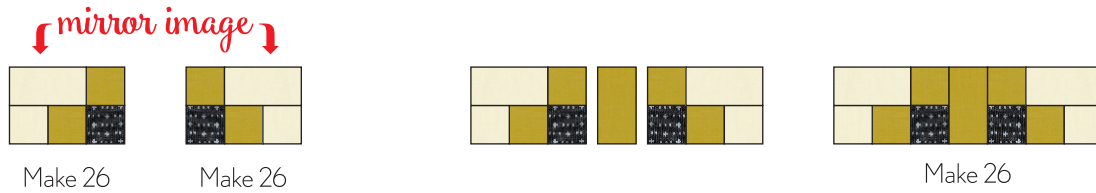


2-1/2"
Cut 52

Sew a 2-1/2" Gold strip lengthwise to a 2-1/2" Coal strip. Press toward Gold strip. Repeat to make [4] strip sets. Crosscut [52] 2-1/2" units from strip sets.



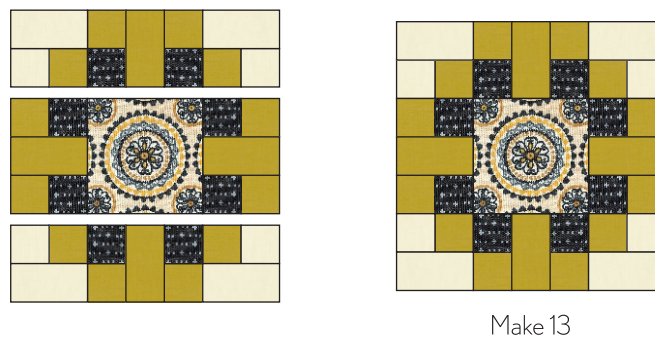
Sew a Gold/Cream unit to a Coal/Gold/Cream unit as shown. Press toward Gold/Cream unit. Make [26]. Make [26] mirror image units as shown. Sew a mirror image unit on each side of a 2-1/2" x 4-1/2" Gold rectangle. Press toward rectangle. Make [26].



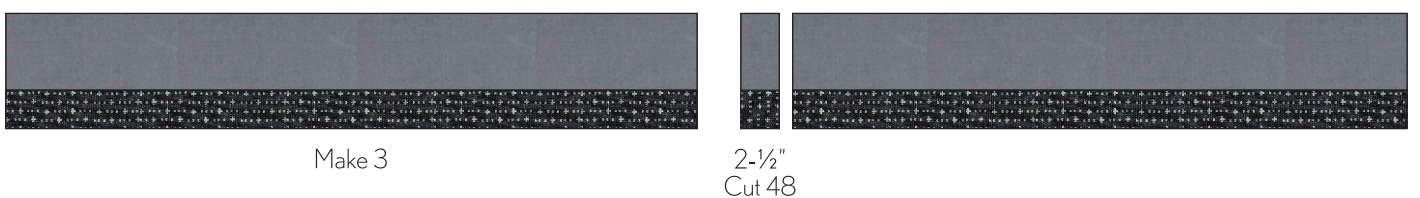
Sew a Gold/Coal unit on each side of a 2-1/2" x 4-1/2" rectangle. Press toward rectangle. Make [26]. Sew a pieced unit on each side of a 6-1/2" fussy cut medallion square. Press toward 6-1/2" square. Make [13].



Arrange units as shown below. Sew together and press seams open. Make [13].



Sew a 4-1/2" Clay strip lengthwise to a 2-1/2" Coal strip. Press toward Clay strip. Repeat to make [3] strip sets. Crosscut [48] 2-1/2" units from strip sets.



Sew a 4-1/2" Gold strip lengthwise to a 2-1/2" Coal strip. Press toward Coal strip. Repeat to make [3] strip sets. Crosscut [48] 2-1/2" units from strip sets.

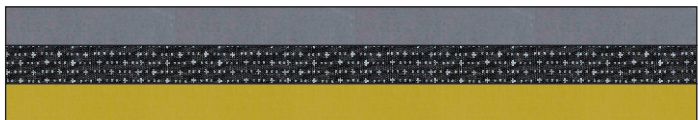


Make 3

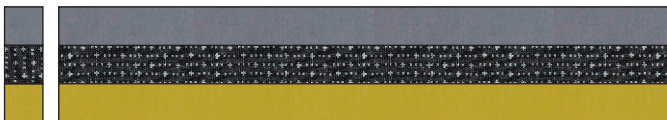


2-1/2"
Cut 48

Sew a 2-1/2" Clay strip, a 2-1/2" Coal strip and a 2-1/2" Gold strip lengthwise. Press toward Gold strip. Repeat to make [3] strip sets. Crosscut [48] 2-1/2" units from strip sets.

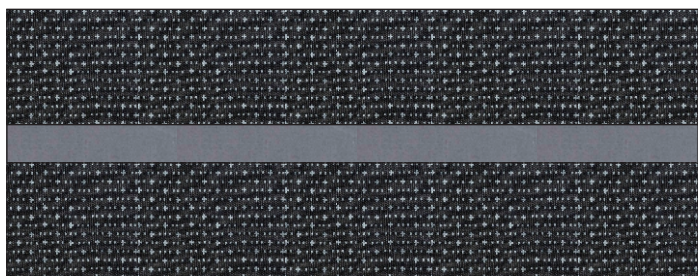


Make 3

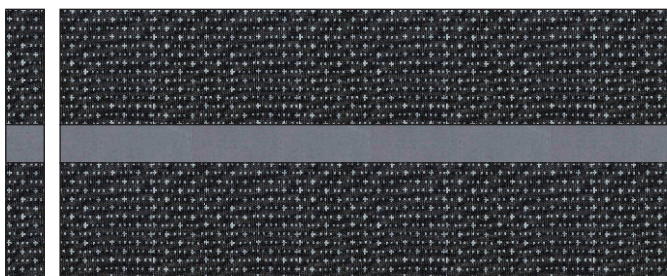


2-1/2"
Cut 48

Sew a 6-1/2" Coal strip on each side of a 2-1/2" Clay strip lengthwise. Press toward Coal strips. Crosscut [12] 2-1/2" units from strip set.



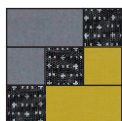
Make 1



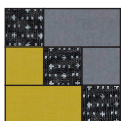
2-1/2"
Cut 12

Sew a Clay/Coal unit; a Gold/Coal unit and a Clay/Coal/Gold unit as shown. Press toward Clay/Coal unit. Make [24]. Make [24] mirror image units as shown. Sew a mirror image unit on each side of a 2-1/2" x 6-1/2" Coal rectangle. Press toward rectangle. Make [24].

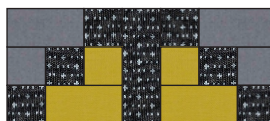
mirror image



Make 24

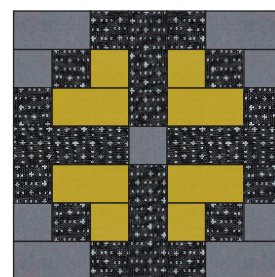
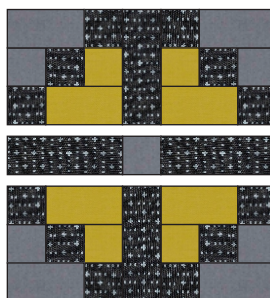


Make 24



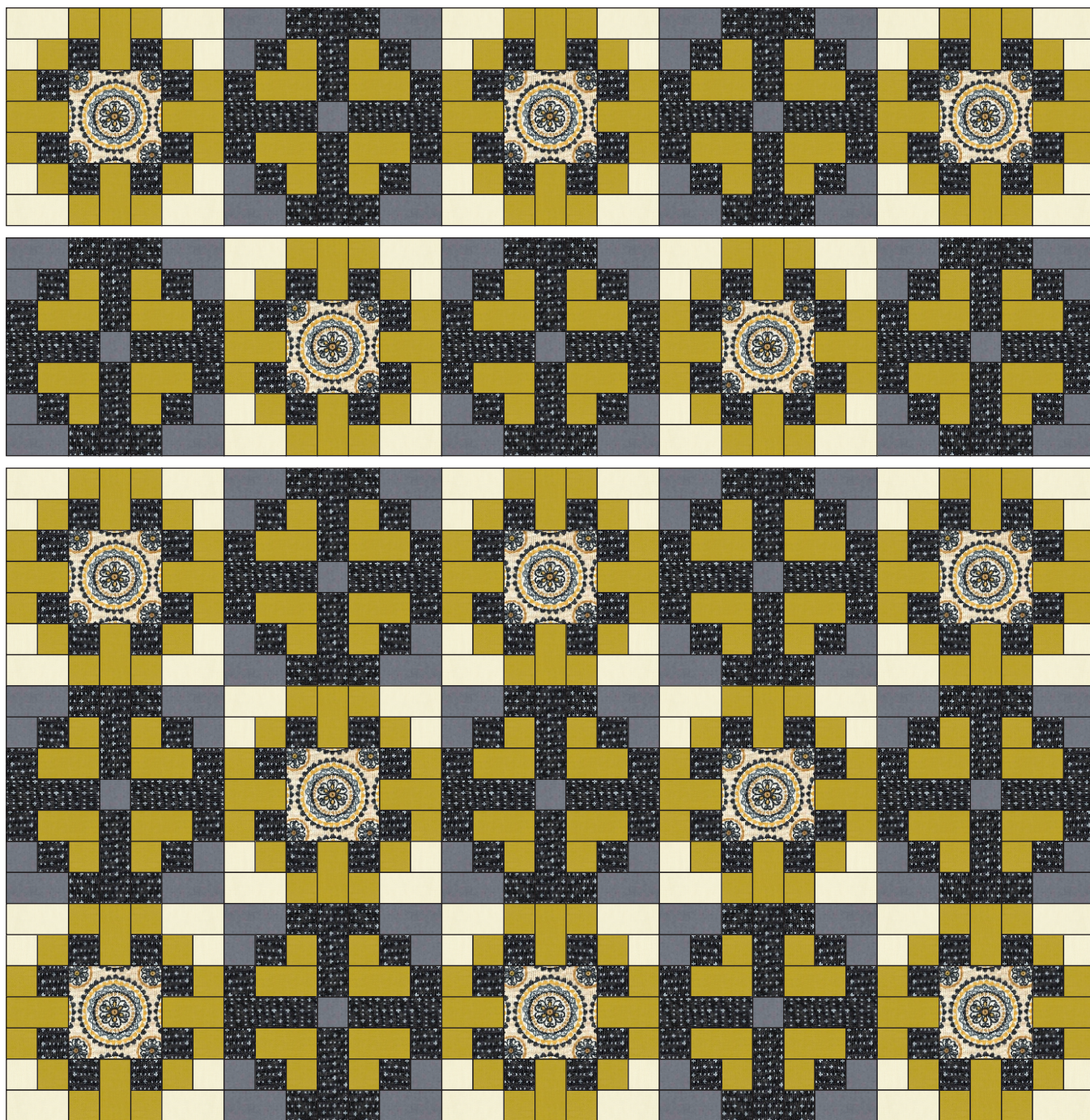
Make 24

Arrange units as shown at right.
Sew together and press seams open. Make [12].



Make 12

Arrange blocks as shown below. Sew blocks into horizontal rows and press seams in opposite directions, row to row. Sew rows together and press to complete quilt top.



www.swirlygirlsdesign.com

© Swirly Girls Design, Inc. Permission is granted to shop owners and teachers to make copies for promotional or educational purposes. This pattern may not be reproduced for commercial purposes.