

# VALENCIA TILES

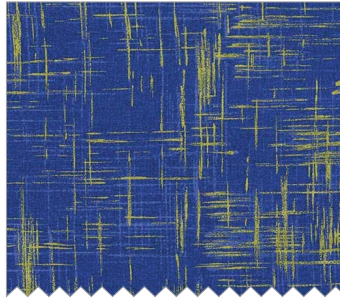


# FABRIC REQUIREMENTS

BACKING AND BATTING: BOTH 42" X 52"



DC7123 Blue  
Spanish Tile  
3/8 yard



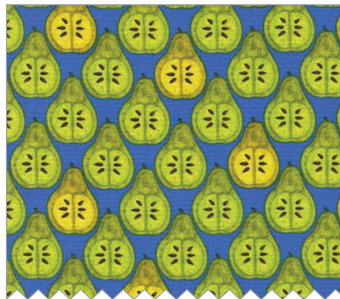
MD4816 Blue  
Painter's Canvas  
3/8 yard



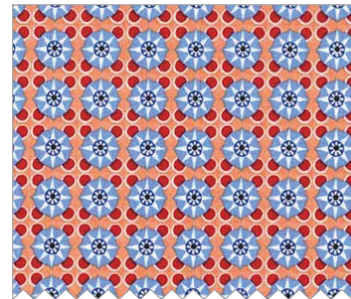
MD7122 Orange  
Birds Kiss  
5/8 yard



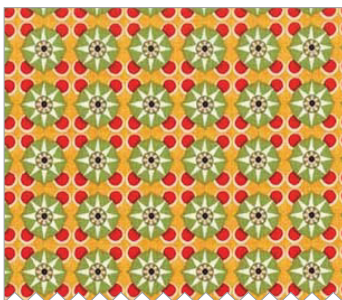
DC7125 Blue  
Brush Marks  
3/4 yard



DC7129 Blue  
Pear Slice  
1 yard



DC7131 Blue  
Petite Tile  
Fat 1/8



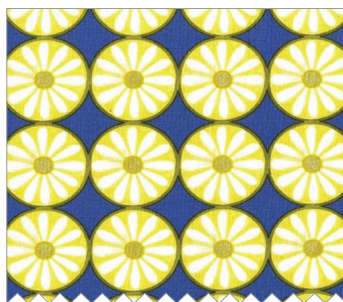
DC7131 Orange  
Petite Tile  
Fat 1/8



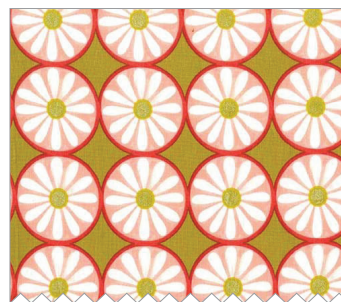
DC7126 Blue  
Color Play  
Fat 1/8



DC7130 Olive  
Petite Poppy  
Fat 1/8



MD7127 Blue  
Daisy Tile  
Fat 1/8



MD7127 Gold  
Daisy Tile  
Fat 1/8

Valencia Tiles

Quilt by Marinda Stewart

Skill Level: Confident Beginner

Size: 42" W x 48" H

The tiles in fabric DC7123 are not perfectly square. I chose to work with the fabric as printed and made measuring adjustments part way through the quilt. It's an unconventional approach but it pays off in the finished appearance of the quilt. These directions reflect this approach. It's more improvisational.

| Fabric                      | Yardage    | Cutting  |
|-----------------------------|------------|--|
| DC7123 Blue Spanish Tiles   | 3/8 yard * | (14) Tiles approximately 6" squares  |
| MD4816 Blue Painters Canvas | 3/8 yard   | (5) 2 1/2" x W.O.F. – binding  |
| DC7122 Orange Bird's Kiss   | 5/8 yard   | (1) 12 1/2" W x 18 1/2" H **   |
| DC7125 Blue Brush Marks *** | 3/4 yard   | (10) 1" x 6"<br>(2) 1" x 12 1/2"<br>(2) 1" x 24 1/2"<br>(2) 1" x 31 1/2"<br>(4) 1" x 30 1/2"<br>(2) 1" x 37 1/2"<br>(2) 1" x 42 1/2" |
| DC7129 Blue Pear Slice      | 1 yard     | (2) 2 1/2" H x 25 1/2" W<br>(2) 2 1/2" H x 35" W<br>(2) 3" H x 37 1/2" W<br>(2) 3" x 48 1/2" ***                                     |
| DC7131 Blue Petite Tile     | Fat 1/8    | (8) 3 1/2" squares   |
| DC7131 Orange Petite Tile   | Fat 1/8    | (8) 3 1/2" squares   |
| DC7126 Blue Color Play      | Fat 1/8    | (8) 3 1/2" squares   |
| DC7130 Olive Petite Poppy   | Fat 1/8    | (8) 3 1/2" squares   |
| DC7127 Blue Daisy Tile      | Fat 1/8    | (8) 3 1/2" squares   |
| DC7127 Gold Daisy Tile      | Fat 1/8    | (8) 3 1/2" squares   |

**ALSO NEEDED:** 45" x 52" backing, 45" x 52" batting, thread to match, scissors, straight pins, rotary cutter, acrylic ruler, and mat.

\* Or amount needed for two complete rows of tiles

\*\* Cut vertically. Keep motifs upright

\*\*\* Each piece was fussy cut, centered on the brush mark

\*\*\*\* Pieced for length

Directions: Note – adjust measurements as needed to fit pieces through step #6

1. Sew one DC7125 1" x 12 ½" piece to the top and bottom of the DC7122 12 ½" x 18 ½" piece. Set aside.
2. Sew one DC7125 1" x 6" piece between the sides of (2) different DC7122 tiles. Make two as shown. Sew one unit to the top and one to the bottom of the DC7122 panel.
3. Sew one DC7125 1" x 30 ½" piece to each side of the DC7122 panel.
4. Sew one DC7126 1" x 6" piece between the top and bottom of (5) DC7123 tiles as shown. Make two. Sew one to each side of the panel.
5. Sew one DC7125 1" x 24 ½" piece to the top and bottom of the panel. Sew one DC7125 1" x 31 ½" piece to each side.
6. Sew one DC7129 2 ½" H x 25 ½" W piece to the top and bottom of the panel. Sew one DC7129 2 ½" W x 35" H piece to each side.
7. Accurately trim panel to measure 29 ½" W x 35 ½" H.
8. Sew one DC7129 1" x 30 ½" piece to the top and bottom of the quilt. Sew one DC7129 1" x 37 ½" piece to each side.
9. Sew together (10) assorted 3 ½" squares as shown. Make (2). Sew one pieced strip to the top and bottom of the quilt. Sew together (14) assorted 3 ½" squares as shown. Make two. Sew one strip to each side of the quilt.
10. Sew one DC7125 1" x 42 ½" piece to each side. Sew one DC7125 1" x 37 ½" piece to the top and bottom.
11. Sew one DC7129 3" H x 37 ½" W to the top and bottom of the quilt. Sew one DC7129 3" W x 48 ½" H (pieced for length) to each side.
12. Layer backing, batting, and quilt top. Baste.
13. Quilt as desired.
14. Bind quilt using MD4816 2 ½" strips pieced as needed for length.