

ENCHANTED FAIRY PANEL



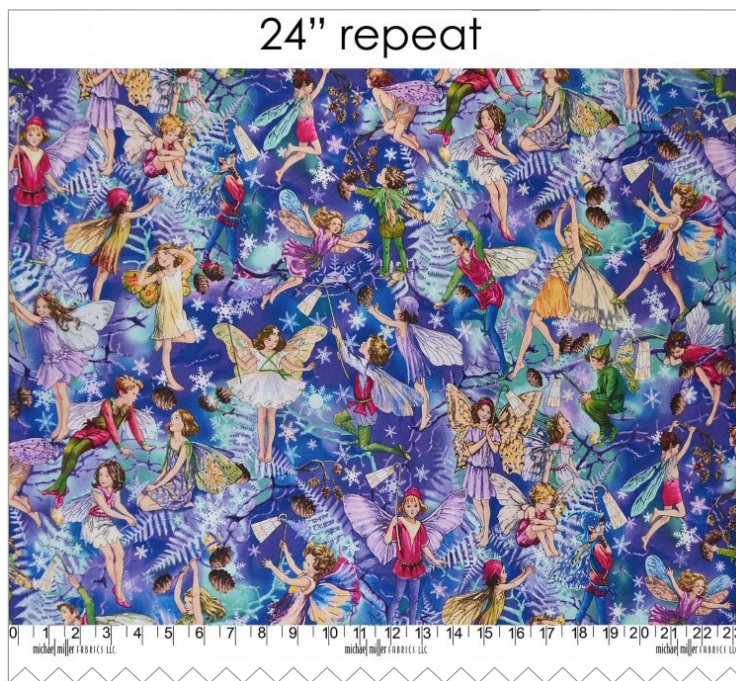
SIZE: 40" x 54" - SKILL LEVEL: CONFIDENT BEGINNER | QUILT DESIGNED BY MARINDA STEWART

FABRIC REQUIREMENTS

45" x 60" backing and batting



DC7051 Twilight
Enchanted Fairy Panel
2/3 yard



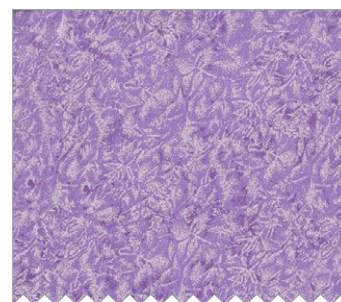
DM7049 Twilight
Enchanted Fairy
3/8 yard



CM0376 Blackberry
Fairy Frost
1/4 yard



CM0376 Grape
Fairy Frost
1/4 yard



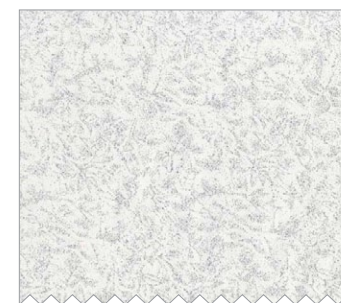
CM0376 Wisteria
Fairy Frost
1/4 yard



CM0376 Blue
Fairy Frost
1/2 yard



K2265 Dark Navy Blue
Krystal
1/2 yard



CM0376 Zirconium
Fairy Frost
1/2 yard

Enchanted Fairy Panel

Quilt designed by Marinda Stewart

Skill Level: Confident Beginner

Size: 40" W x 54" H

Fabrics	Yardage	Cutting
DC7051 Twilight Enchanted Fairy Panel	2/3 yard *	(1) 23 ½" W x 42 ½"
K2265 (Dark Navy Blue Krystal	1/2 yard	(2) 1" x 42 ½" (2) 1" x 40 ½" (5) 2 ½" x W.O.F.
CM0376 Blue Fairy Frost	1/2 yard	(2) 8 ½" x 12 ½" (1) 6 ½" x 24 ½" (8) 3" squares
CM0376 Blackberry Fairy Frost	1/4 yard	(2) 8 ½" x 12 ½" (8) 3" squares
CM0376 Grape Fairy Frost	1/4 yard	(2) 8 ½" x 12 ½" (8) 3" squares
CM0376 Wisteria Fairy Frost	1/4 yard	(2) 8 ½" x 12 ½" (8) 3" squares
DM7049 Twilight Enchanted Fairy	3/8 yard	(8) 5 ½" squares
CM0376 Zirconium Fairy Frost	1/2 yard	(13) Stars (8) Large snowflakes (8) Small snowflakes ** (1) 10" x 40 ½" icicles

Also Needed: 45" x 60" backing, 45" x 60" batting, scissors, straight pins, threads to match, (OPTIONAL: Metallic silver thread for applique), rotary cutter, acrylic ruler, mat, and fusible web.

OPTIONAL: (but recommended) iron-on tear-away stabilizer.

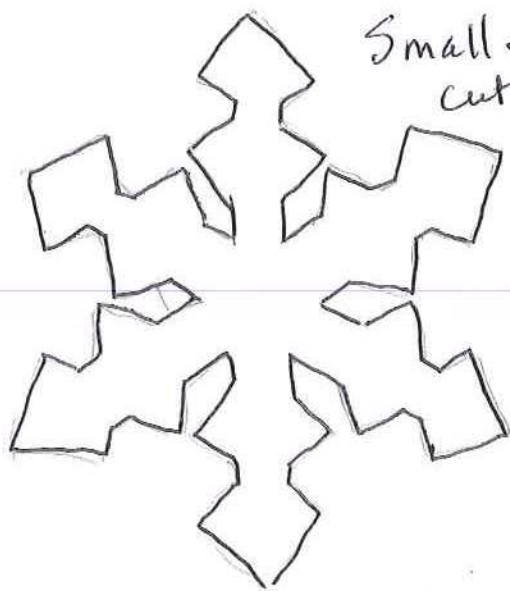
* Or amount needed to get one (1) complete panel

** See patterns

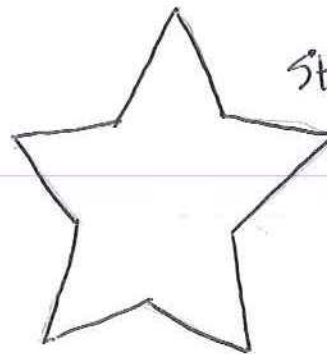
1. Sew one K2265 1" x 42 ½" piece to each side of the DC7051 23 ½" x 42 ½" panel.
2. Sew one CM0376 Blue 6 ½" x 24 ½" piece to the top of the DC7051 panel. Set aside.

3. Sew together from the top one 8 ½" x 12 ½" piece of each CM0376 Blue, Blackberry, Grape, and Wisteria. Make two 8 ½" x 48 ½" pieces. Sew one shaded panel to each side of the quilt as shown with the darkest at the top and the lightest at the bottom.
4. Sew one K2265 1" x 40 ½" piece to the bottom of the quilt.
5. To make the 5 ½" square in square block. Place one CM0376 Wisteria 3" square right sides together on top of the upper left corner of one DM7049 5 ½" square. Sew diagonally from the lower left to the upper right corner of the 3" square. Press corner open. Trim excess from the back. Repeat using 3" squares of CM0376 Grape in the upper right corner, CM0376 Blackberry in the lower right corner, and CM0376 Blue in the lower left corner. Make (8) blocks total. Sew blocks together into one 5 ½" x 40 ½" strip. Sew to the bottom of the quilt.
6. Sew one K2265 1" x 40 ½" strip to the bottom of the quilt.
7. For the icicles – iron fusible web to the wrong side of CM0376 Zirconium 10" x 40 ½" strip. Free hand draw icicles as shown. Draw longer icicles in the first and last 8" of the strip. Cut out. Remove paper backing, iron onto the right side Top of the quilt as shown. Machine applique in place. OPTIONAL: use metallic silver thread. OPTIONAL: (but recommended) Iron iron-on tear-away stabilizer on the back of the quilt before appliquéing. Stitch through all layers. Remove all traces of stabilizer after stitching. Stabilizer improves stitch quality and removes distortion.
8. Trace (8) small snowflakes, (8) large snowflakes, and (13) stars onto the paper side of the fusible web. Rough cut out. Following manufacturer's directions iron the fusible web on the wrong side of CM0376 Zirconium. Cut out. Remove paper backing. Scatter snowflakes randomly on each side of the center panel as shown. Machine applique in place. OPTIONAL: Use metallic silver thread and iron-on tear-away stabilizer.
9. Layer backing, batting, and quilt top. Baste.
10. Quilt as desired.
11. Bind quilt using K2265 2 ½" strips pieced as needed for length.

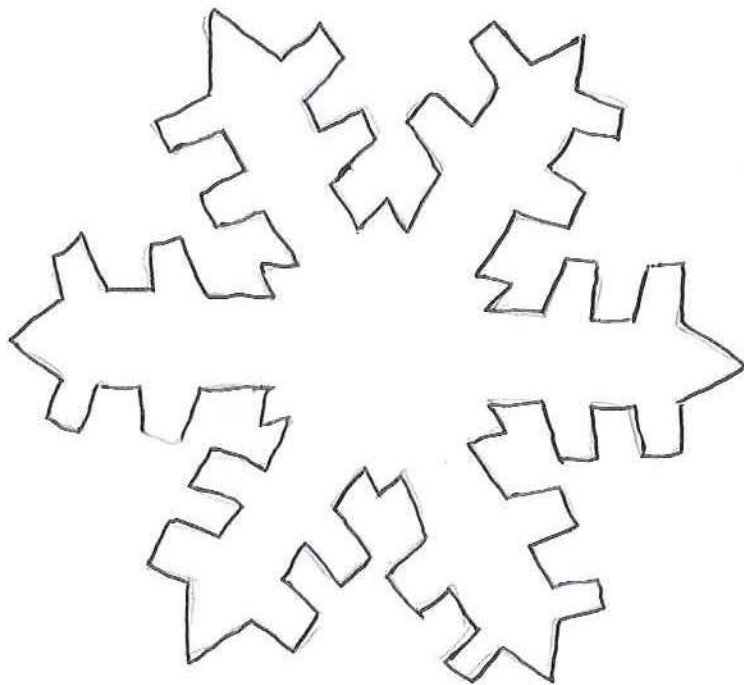
"Enchanted Fairy Panel" Quilt
PATTERNS



Small Snowflake
cut(8)



Star cut(13)



Large snowflake
cut(8)

Minda @ 2015