

# FRACTURED LANDSCAPES



SIZE: 40" x 48" | SKILL LEVEL: CONFIDENT BEGINNER | QUILT DESIGNED BY MARINDA STEWART



# FABRIC REQUIREMENTS

BACKING & BATTING: 45" X 54"



CJ3070 Blue  
Meadow Path  
1 1/4 yards



CJ3071 Green  
Grass  
1/2 yard



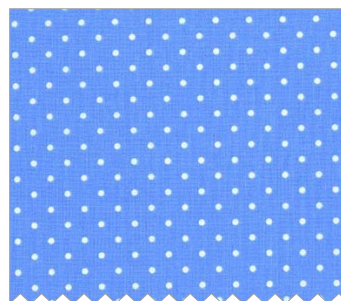
K2257 (Dark Green)  
Krystal  
1/4 yard



K1062 (Light Blue)  
Krystal  
1/6 yard



K1063 (Med.Light Blue)  
Krystal  
1/6 yard



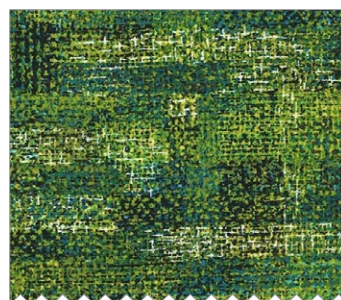
CX5514 Boy  
Pinhead  
1/6 yard



CX6898 Blue  
Bark Cloth  
1/6 yard



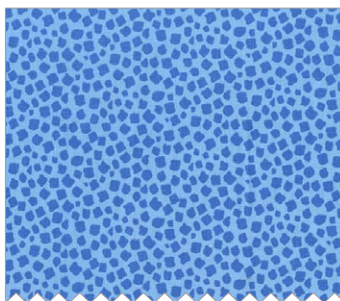
CJ6816 Multi  
Pixelism  
1/6 yard



CJ6817 Ocean  
Pixel Plaid  
1/6 yard



CJ2135 Green  
Park Landscape  
1/4 yard



CX6896 Blue  
Giraffe Spot  
Fat 1/8



CJ3072 Green  
Meadow Daisy  
Fat 1/8

## Fractured Landscape

Quilt by Marinda Stewart

Size: 40" W x 48" H

Skill Level: Confident Beginner

It helps to have (or create) a design wall to assemble this quilt. Fabric squares need to be tried before they are sewn in place. Extra squares of each fabric have been allowed for maximum flexibility \*. There will be extra 2 ½" squares leftover after the top is made. Exact matching of each fabric square is not necessary.

Fabrics	Yardage	Cutting
CJ3070 Blue Meadow Path	1 1/4 yard	(1) 24 ½" square ** (33) 4 ½" squares (32) 2 ½" squares
CX3071 Green Grass	1/2 yard	(3) 2 ½" x W.O.F. – binding (60) 2 ½" squares
K2257 (Dark Green) Krystal	1/4 yard	(40) 2 ½" squares
K1062 (Light Blue) Krystal	1/6 yard	(30) 2 ½" squares
K1063 (Medium Light Blue) Krystal	1/6 yard	(30) 2 ½" squares
CX5514 Boy Pinhead	1/6 yard	(30) 2 ½" squares
CX6898 Blue Bark Cloth	1/6 yard	(30) 2 ½" squares
CJ6816 Multi Pixelism	1/6 yard	(30) 2 ½" squares
CJ6817 Ocean Pixel Plaid	1/6 yard	(30) 2 ½" squares
CJ2135 Green Park Landscape	1/4 yard	(40) 2 ½" squares
CX6896 Blue Giraffe Spot	Fat 1/8	(20) 2 ½" squares
CJ3072 Green Meadow Daisy	Fat 1/8	(15) 2 ½" squares

\*\* Center cut on motif as shown

\* Cut additional squares from each fabric if needed

ALSO NEEDED: 45" x 54" backing, 45" x 54" batting, thread to match, scissors, straight pins, rotary cutter, acrylic ruler, and mat.

## DIRECTIONS:

1. To make one 4 ½" square within a square block – place one K1062 2 ½" square right sides together in the upper left corner of one CJ3070 'sky' 4 ½" square. Sew diagonally across the corner. Press open. Trim excess fabric from the back. Repeat for each remaining corner. Make (13) 'sky' blocks. Make (20) 'ground' blocks as shown.
2. Sew together (6) 4 ½" 'sky' blocks into a strip. Sew to the top of CJ3070 24 ½" square. Sew together (6) 4 ½" 'ground' blocks. Sew to the bottom of the quilt. Sew together (2) 'sky' and (6) 'ground' blocks in a vertical strip. Make (2). Sew one to each side of the 24 ½" square.
3. For the side of the quilt. Sew together (8) 2 ½" squares into a (2) square x (4) square strip. Make two. Sew strip to the top of one 4 ½" sky block. Make two. Sew together (20) assorted greens and florals into a strip (2) squares x (10) squares. Maintain the general feeling of the landscape panel on each side as shown. Make (2) strips. Sew one strip (4 ½" x 32 ½") to each side of the quilt.
4. For the top of the quilt. Make one 2 ½" x 40 ½" strip of random blue 2 ½" squares. Sew to the top of the quilt. Make a strip 4 ½" x 26 ½" of random blue 2 ½" squares. Sew the remaining 4 ½" sky block to the right end of the strip. Make a piece 4 ½" x 10 ½" of (10) 2 ½" blue squares. Sew to the right side of the 4 ½" block. Sew completed 4 ½" x 40 ½" piece to the top of the quilt.
5. For the bottom of the quilt. Make a (20) square strip of 2 ½" green and floral squares 2 ½" x 40 ½". Sew to the bottom of the quilt. Make a strip 4 ½" x 28 ½" of random greens and florals using (28) 2 ½" squares. Sew one 4 ½" 'ground' block to the right end of the strip. Make a 4 ½" x 8 ½" strip of (8) 2 ½" squares. Sew to the right side of the 4 ½" block. Sew completed 4 ½" x 40 ½" strip to the bottom of the quilt. Repeat making a 4 ½" x 10 ½" strip of (10) 2 ½" squares, a 4 ½" 'ground' block, and a strip of (26) 2 ½" squares measuring 4 ½" x 26 ½". Sew to the bottom of the quilt.
6. Layer backing, batting, and quilt top. Baste.
7. Quilt as desired.
8. Bind top of quilt using CX6898 2 ½" strip. Bind bottom of quilt using K2257 2 ½" strip. Piece CX6898 and K2257 to match the sky and ground horizon on each side and bind sides.